



The Harper, King George's Vale (Plot 7) Northaw Prices From £640,000

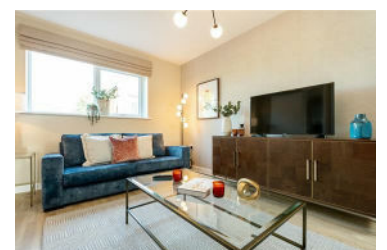


PART EXCHANGE & EXPRESS MOVER SCHEMES AVAILABLE!*

The Harper, a wonderful semi-detached 1,010 sq.ft. 3 bedroom modern home, featuring open-plan kitchen/dining area, separate living room, en-suite to bedroom 1 along with a garage.

Welcome to King George's Vale, a superior collection of modern 2, 3, 4 & 5 bedroom homes designed by reputable housebuilder, Bellway located in the affluent and scenic village of Cuffley. Each home has been thoughtfully designed to maximise space and light throughout with high specification finishes such as contemporary fitted kitchens with a number of integrated appliances, Roca sanitaryware to bathrooms and en-suites. All homes are future-focused benefiting from Air source heat pump, Solar PV panels, Google Nest heating, complimentary electrical vehicle charging point with

- PART EXCHANGE, EXPRESS MOVER & A RANGE OF TAILORED INCENTIVES AVAILABLE!*
- Spacious living room
- Garage
- Close proximity to A10, M25 & A1(M)
- Walking distance to an array of wonderful village pubs & eateries
- Spectacular kitchen/dining area to the rear of the property
- Main bedroom with en-suite
- Electrical vehicle charging point
- Easy access to Cuffley Station providing direct links into the City
- 10-year NHBC new build warranty



2 Market Street, Hertford, Hertfordshire, SG14 1BD
T | 01992 940955

info@lanesexclusivehomes.co.uk | lanesexclusivehomes.co.uk