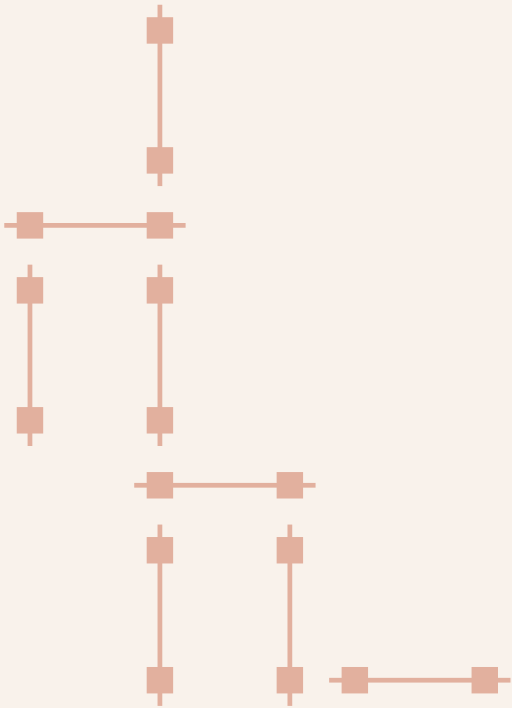
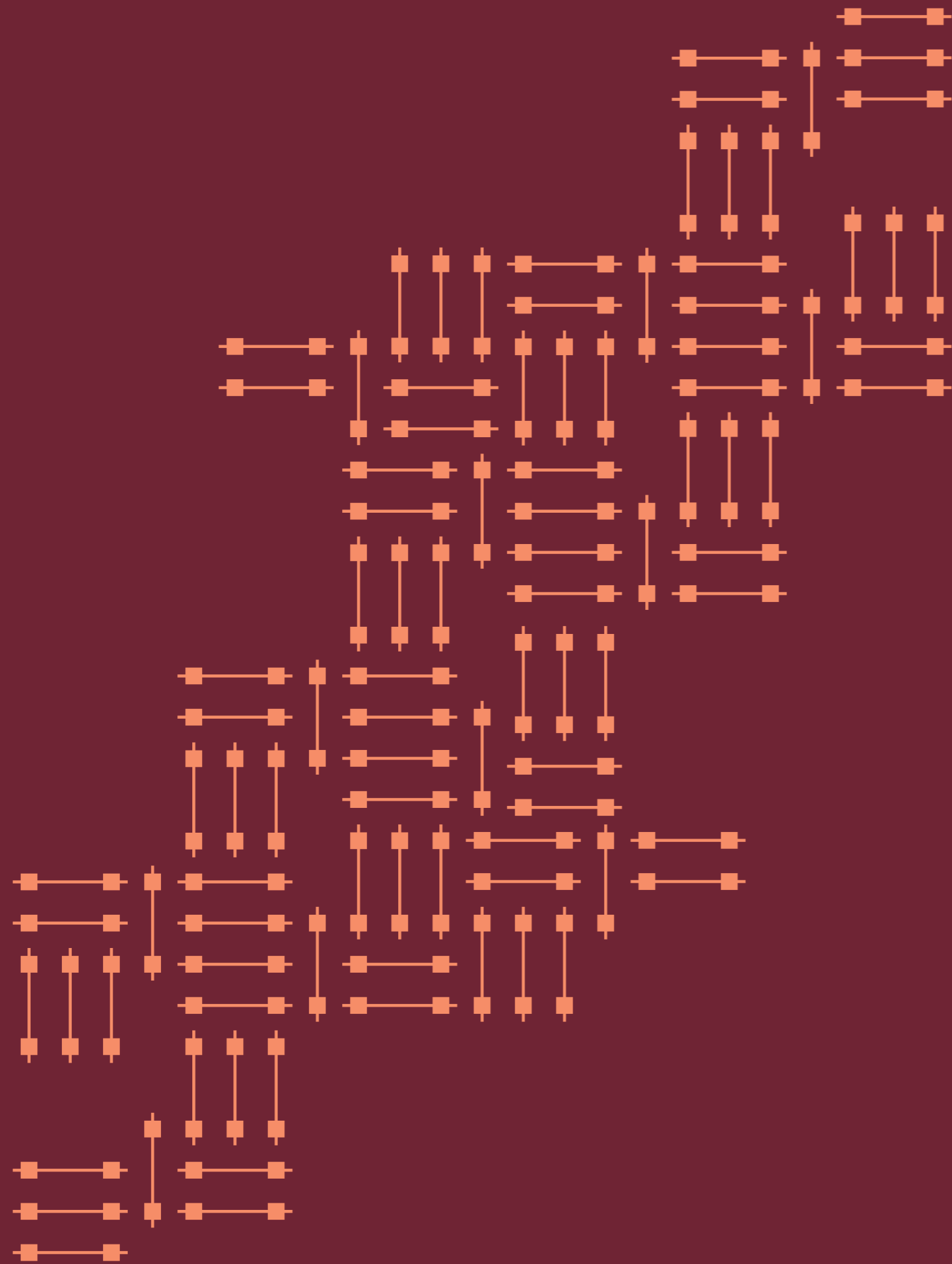


OLD
ELECTRICITY
WORKS

ST ALBANS



Discover a new, well-connected collection of one, two and three bedroom apartments, duplexes and townhouses with undercroft enclosed parking surrounding beautifully landscaped communal gardens in St Albans.



Computer generated image – indicative only.

Specification & Details



4

Kitchens

- Fully fitted designer handleless kitchen with cashmere coloured units
- Quartz worktop and matching splashbacks
- Integrated ceramic hob
- Integrated single oven
- Integrated dishwasher*
- Stainless steel under-mounted sink
- Polished chrome mixer tap
- Extractor hood
- Integrated fridge/freezer*
- Integrated washer/dryer*

*Bosch appliances or equivalent

Bathrooms

- Armera Opa vanity unit
- Duravit wall hung WC's
- Hansgrohe taps and shower fittings
- Full height Premier Stone tiled bathroom
- Mirrored cabinets
- Large shower with frameless screen to all flats
- Duravit bath to flats with two bathrooms

Electrics

- Spotlights to kitchen and bathrooms
- Wired for Sky Q
- TV points in lounge and bedrooms
- Telephone points in lounge
- USB points to lounge and bedrooms

Heating

- Electric boiler with designer radiators
- Underfloor heating to bathrooms

Flooring

- Amtico Barrel Grey flooring to lounge, kitchen and hallways
- Premier Stone floor tiles to all bathrooms and ensuites
- Cormar Tortilla carpets to all bedrooms (includes staircases and landing areas to houses)

Finishes, doors and woodwork

- Designer colour palettes to all walls, skirting and architraves
- Cashmere coloured matt wardrobe doors to master bedroom (including second bedroom in 3-bedroom apartments)
- High quality firecheck painted doors in white with chrome ironmongery

Warranty

- 10 Year Checkmate warranty

Amenities

- Concierge
- Roof terrace gardens
- Secure enclosed parking
- Remote controlled gated vehicle entrance
- Digitally controlled pedestrian entrance gate
- CCTV coverage

5



Computer generated images – indicative only.



A City of Culture

St Albans is a beautiful historic city with a vibrant centre, cultural attractions and a superb selection of eateries and shops.

St Albans has much to offer with a busy high street, quaint shopping lanes and independent shops sitting alongside The Maltings and Christopher Place shopping centres. Town centre restaurants include The Ivy, Côte Brasserie and Lussmans, as well as a generous selection of cafés, delis and charming pubs.

Old Electricity Works is located just a 12 minute walk to the city's mainline station, where trains travel into central London in less than half an hour providing great connectivity with the capital.



West Hampstead

St Albans Station

12 mins

4 mins

London St Pancras

City Centre

22 mins

6 mins

Farringdon

M25 Motorway

27 mins

9 mins

City Thameslink

Luton Airport

29 mins

25 mins



Old Electricity Works

With communal access to a central landscaped garden, Old Electricity Works offers a unique opportunity to live within a dynamically created new community in St Albans.

- Armstrong House**
Apartments A6 – A8
1 & 2 bedroom apartments
- Faraday House**
Apartments F1 – F18
1, 2 & 3 bedroom apartments
- Edison House**
Apartments E1 – E40
1, 2 & 3 bedroom apartments
- Brush House**
Apartments B1 – B17
1, 2 & 3 bedroom apartments
- Goode House**
Houses G1 – G3
3 bedroom houses
- Duddell House**
Apartments D1 – D13
1, 2 & 3 bedroom apartments
- Clarke House**
Apartments C1 – C6
1 & 2 bedroom apartments



- 17 Charge Points
- 17 Future Charge Points

Armstrong House

Apartments A6 – A8

02

Level 02

Apartment A6

| | | |
|-----------------------|-----------------|-----------------|
| Living/Dining/Kitchen | 6.57m x 4.50m | 21'7" x 14'9" |
| Bedroom 1 | 3.69m x 3.38m | 12'1" x 11'1" |
| Bedroom 2 | 3.90m x 3.01m | 12'10" x 9'11" |
| Balcony | 10.60m x 3.00m | 34'9" x 9'10" |
| Total | 70.4 sqm | 758 sqft |

Apartment A7

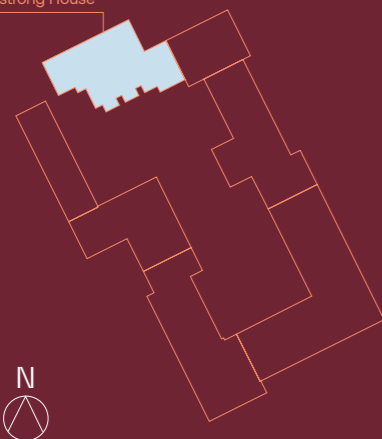
| | | |
|-----------------------|-----------------|-----------------|
| Living/Dining/Kitchen | 5.33m x 4.87m | 17'6" x 16'0" |
| Bedroom | 3.40m x 3.45m | 11'2" x 11'4" |
| Balcony | 5.10m x 3.00m | 16'9" x 9'10" |
| Total | 52.4 sqm | 564 sqft |

Apartment A8

| | | |
|-----------------------|-----------------|-----------------|
| Living/Dining/Kitchen | 5.33m x 4.87m | 17'6" x 16'0" |
| Bedroom | 3.40m x 3.45m | 11'2" x 11'4" |
| Balcony | 5.50m x 3.00m | 18'1" x 9'10" |
| Total | 52.4 sqm | 564 sqft |

Site Plan

Armstrong House



Level 02

Apartments A6–A8



Brush House

Levels 01 – 05

Apartments B1 – B17

01

Level 01

Apartment B1

| | | |
|-----------------------|-----------------|-----------------|
| Living/Dining/Kitchen | 7.40m x 4.10m | 24'3" x 13'6" |
| Bedroom 1 | 4.85m x 3.00m | 15'11" x 9'10" |
| Bedroom 2 | 4.78m x 3.41m | 15'8" x 11'2" |
| Study | 3.20m x 2.50m | 10'6" x 8'2" |
| Balcony | 6.30m x 1.50m | 20'8" x 4'11" |
| Total | 91.1 sqm | 981 sqft |

Apartment B2

| | | |
|-----------------------|-----------------|-----------------|
| Living/Dining/Kitchen | 8.75m x 3.46m | 28'8" x 11'4" |
| Bedroom 1 | 4.49m x 2.99m | 14'8" x 9'10" |
| Bedroom 2 | 5.00m x 2.90m | 16'5" x 9'6" |
| Bedroom 3 | 5.00m x 2.39m | 16'5" x 7'10" |
| Terrace | 9.30m x 4.80m | 30'6" x 15'8" |
| Total | 88.9 sqm | 957 sqft |

Apartment B3

| | | |
|-----------------------|-----------------|-----------------|
| Living/Dining/Kitchen | 6.60m x 5.34m | 21'8" x 17'6" |
| Bedroom | 5.34m x 3.07m | 17'6" x 10'1" |
| Balcony | 5.70m x 1.95m | 18'8" x 6'5" |
| Total | 57.7 sqm | 621 sqft |

02

Level 02

Apartment B4

| | | |
|-----------------------|-----------------|-----------------|
| Living/Dining/Kitchen | 7.25m x 4.35m | 23'9" x 14'3" |
| Bedroom 1 | 4.79m x 3.36m | 15'8" x 11'0" |
| Bedroom 2 | 7.25m x 3.15m | 23'9" x 10'4" |
| Bedroom 3 | 3.45m x 2.60m | 11'4" x 8'6" |
| Balcony | 6.35m x 1.65m | 20'10" x 5'5" |
| Total | 91.7 sqm | 987 sqft |

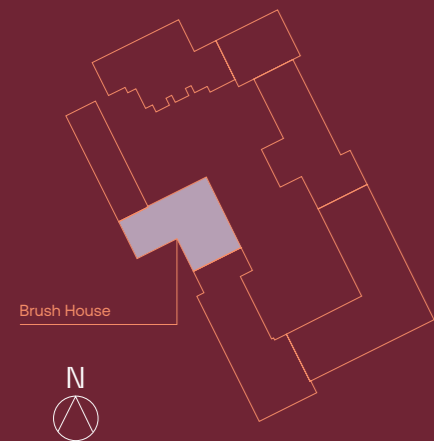
Apartment B5

| | | |
|-----------------------|-----------------|-----------------|
| Living/Dining/Kitchen | 8.75m x 3.46m | 28'8" x 11'4" |
| Bedroom 1 | 4.48m x 3.00m | 14'8" x 9'10" |
| Bedroom 2 | 5.00m x 2.90m | 16'5" x 9'6" |
| Bedroom 3 | 5.00m x 2.39m | 16'5" x 7'10" |
| Balcony | 3.38m x 1.55m | 11'1" x 5'1" |
| Total | 88.9 sqm | 957 sqft |

Apartment B6

| | | |
|-----------------------|-----------------|-----------------|
| Living/Dining/Kitchen | 6.61m x 5.34m | 21'8" x 17'6" |
| Bedroom | 5.34m x 3.06m | 17'6" x 10'1" |
| Balcony | 3.38m x 1.55m | 11'1" x 5'1" |
| Total | 58.0 sqm | 624 sqft |

Site Plan



03

Level 03

Apartment B7

| | | |
|-----------------------|-----------------|-----------------|
| Living/Dining/Kitchen | 6.27m x 5.86m | 20'7" x 19'3" |
| Bedroom | 4.21m x 2.64m | 13'10" x 8'8" |
| Balcony | 2.95m x 1.55m | 9'8" x 5'1" |
| Total | 50.8 sqm | 547 sqft |

Apartment B8

| | | |
|-----------------------|-----------------|-----------------|
| Living/Dining/Kitchen | 6.61m x 5.34m | 21'8" x 17'6" |
| Bedroom | 5.34m x 3.06m | 17'6" x 10'1" |
| Balcony | 3.38m x 1.55m | 11'1" x 5'1" |
| Total | 57.6 sqm | 620 sqft |

Apartment B9

| | | |
|-----------------------|-----------------|-----------------|
| Living/Dining/Kitchen | 5.87m x 5.71m | 19'3" x 18'9" |
| Bedroom | 4.16m x 3.31m | 13'8" x 10'10" |
| Balcony | 5.60m x 2.50m | 18'4" x 8'2" |
| Total | 51.2 sqm | 551 sqft |

04

Level 04

Apartment B10

| | | |
|-----------------------|-----------------|-----------------|
| Living/Dining/Kitchen | 6.27m x 5.86m | 20'7" x 19'3" |
| Bedroom | 4.21m x 2.64m | 13'10" x 8'8" |
| Balcony | 2.95m x 1.55m | 9'8" x 5'1" |
| Total | 50.8 sqm | 547 sqft |

Apartment B11

| | | |
|-----------------------|-----------------|-----------------|
| Living/Dining/Kitchen | 4.98m x 4.97m | 16'4" x 16'4" |
| Bedroom | 4.10m x 3.58m | 13'5" x 11'9" |
| Balcony | 4.85m x 1.55m | 15'10" x 5'1" |
| Total | 54.1 sqm | 582 sqft |

Apartment B12

| | | |
|-----------------------|-----------------|-----------------|
| Living/Dining/Kitchen | 5.87m x 5.71m | 19'3" x 18'9" |
| Bedroom | 4.16m x 3.31m | 13'8" x 10'10" |
| Balcony | 2.95m x 1.55m | 9'8" x 5'1" |
| Total | 51.4 sqm | 553 sqft |

Apartment B13

| | | |
|-----------------------|-----------------|-----------------|
| Living/Dining/Kitchen | 6.85m x 6.75m | 22'6" x 22'2" |
| Bedroom 1 | 3.77m x 3.15m | 12'4" x 10'4" |
| Bedroom 2 | 4.45m x 2.15m | 14'7" x 7'1" |
| Balcony | 3.40m x 1.55m | 11'3" x 5'1" |
| Total | 69.2 sqm | 745 sqft |

05

Level 05

Apartment B14

| | | |
|-----------------------|-----------------|-----------------|
| Living/Dining/Kitchen | 6.85m x 6.75m | 22'6" x 22'2" |
| Bedroom 1 | 3.77m x 3.15m | 12'4" x 10'4" |
| Bedroom 2 | 4.48m x 2.15m | 14'7" x 7'1" |
| Balcony | 4.60m x 1.55m | 15'1" x 5'1" |
| Total | 69.2 sqm | 745 sqft |

Apartment B15

| | | |
|-----------------------|-----------------|-----------------|
| Living/Dining/Kitchen | 4.98m x 4.97m | 16'4" x 16'4" |
| Bedroom | 4.10m x 3.58m | 13'5" x 11'9" |
| Balcony | 4.80m x 1.55m | 15'1" x 5'1" |
| Total | 54.1 sqm | 582 sqft |

Apartment B16

| | | |
|-----------------------|-----------------|-----------------|
| Living/Dining/Kitchen | 5.87m x 5.71m | 19'3" x 18'9" |
| Bedroom | 4.36m x 3.31m | 14'4" x 10'10" |
| Balcony | 2.95m x 1.55m | 9'8" x 5'1" |
| Total | 51.8 sqm | 555 sqft |

Apartment B17

| | | |
|-----------------------|-----------------|-----------------|
| Living/Dining/Kitchen | 6.27m x 5.86m | 20'7" x 19'3" |
| Bedroom | 4.21m x 2.64m | 13'10" x 8'8" |
| Balcony | 2.95m x 1.55m | 9'8" x 5'1" |
| Total | 50.8 sqm | 547 sqft |

Level 01

Apartments B1-B3



Level 04

Apartments B10-B13



Level 02

Apartments B4-B6



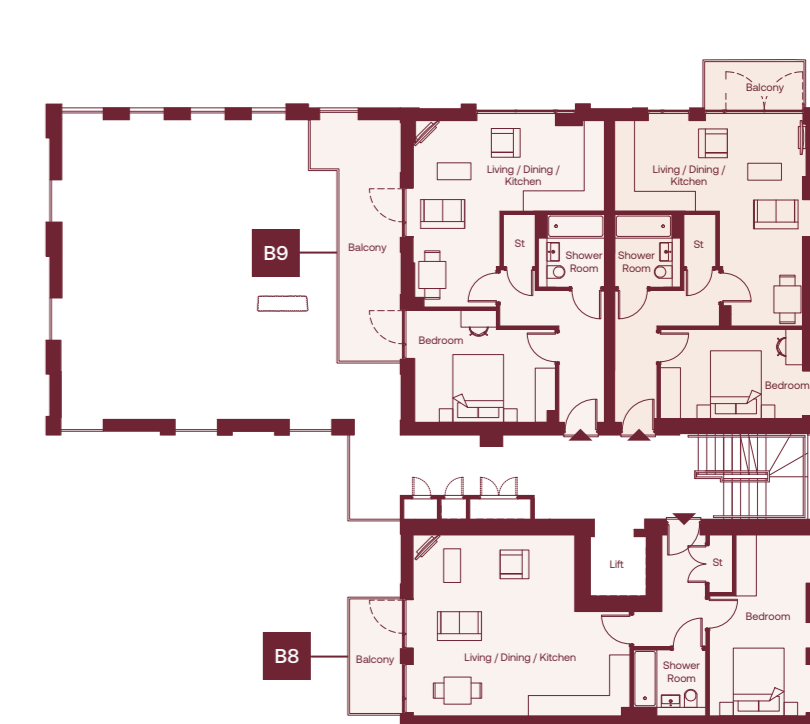
Level 05

Apartments B14-B17



Level 03

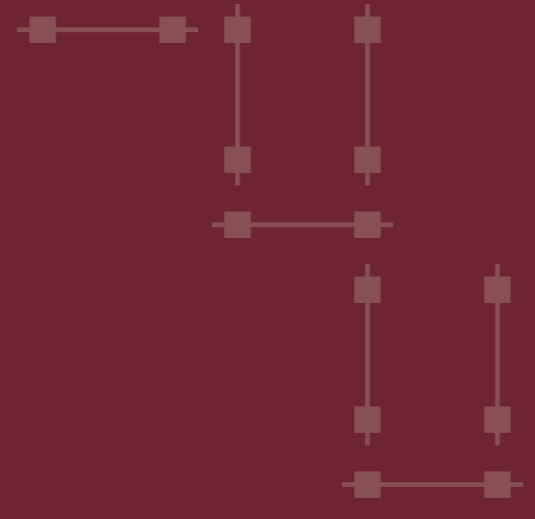
Apartments B7-B9



Clarke House

Levels 01 – 03

Apartments C1 – C6



Computer generated image – indicative only.

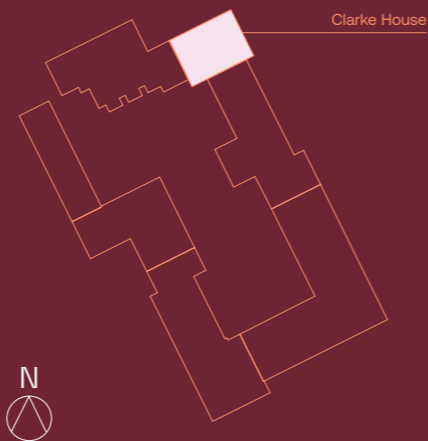
01

| Level 01 | | | |
|-----------------------|-----------------|-----------------|--|
| Apartment C1 | | | |
| Living/Dining/Kitchen | 9.41m x 3.59m | 30'11" x 11'9" | |
| Bedroom | 3.60m x 3.45m | 11'10" x 11'4" | |
| Balcony | 2.70m x 1.55m | 8'10" x 5'1" | |
| Total | 56.9 sqm | 612 sqft | |
| Apartment C2 | | | |
| Living/Dining/Kitchen | 7.73m x 3.14m | 25'4" x 10'4" | |
| Bedroom 1 | 4.09m x 3.70m | 13'5" x 12'2" | |
| Bedroom 2 | 4.06m x 2.67m | 13'4" x 8'9" | |
| Total | 73.1 sqm | 787 sqft | |

02

| Level 02 | | | |
|-----------------------|-----------------|-----------------|--|
| Apartment C3 | | | |
| Living/Dining/Kitchen | 6.69m x 4.63m | 21'11" x 15'2" | |
| Bedroom | 4.63m x 3.00m | 15'2" x 9'10" | |
| Balcony | 9.50m x 8.70m | 31'2" x 28'7" | |
| Total | 58.5 sqm | 630 sqft | |
| Apartment C4 | | | |
| Living/Dining/Kitchen | 6.46m x 5.98m | 21'2" x 19'7" | |
| Bedroom | 3.51m x 4.05m | 11'6" x 13'3" | |
| Balcony | 6.60m x 1.15m | 21'8" x 3'9" | |
| Total | 56.6 sqm | 609 sqft | |

Site Plan

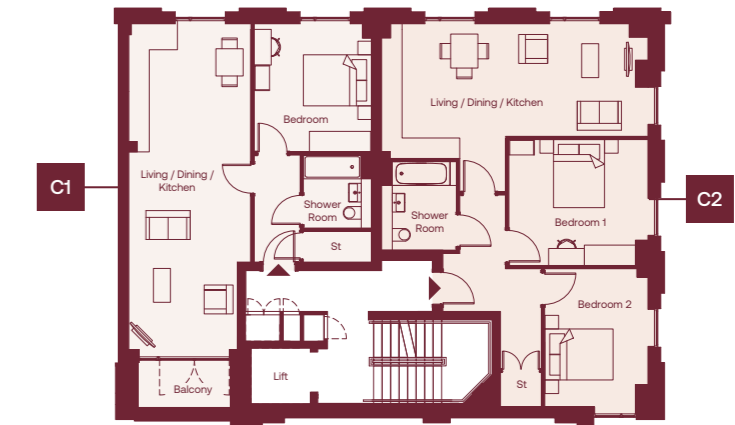


03

| Level 03 | | | |
|-----------------------|-----------------|-----------------|--|
| Apartment C5 | | | |
| Living/Dining/Kitchen | 6.69m x 4.63m | 21'11" x 15'2" | |
| Bedroom | 4.63m x 3.00m | 15'2" x 9'10" | |
| Total | 58.5 sqm | 630 sqft | |
| Apartment C6 | | | |
| Living/Dining/Kitchen | 6.46m x 5.98m | 21'2" x 19'7" | |
| Bedroom | 3.51m x 4.05m | 11'6" x 13'3" | |
| Total | 56.6 sqm | 609 sqft | |

Level 01

Apartments C1–C2



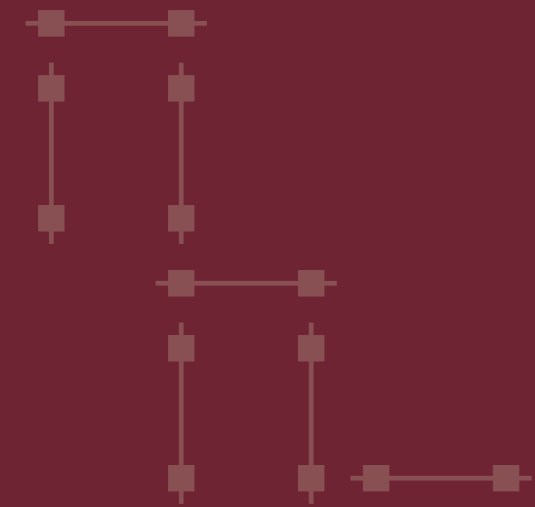
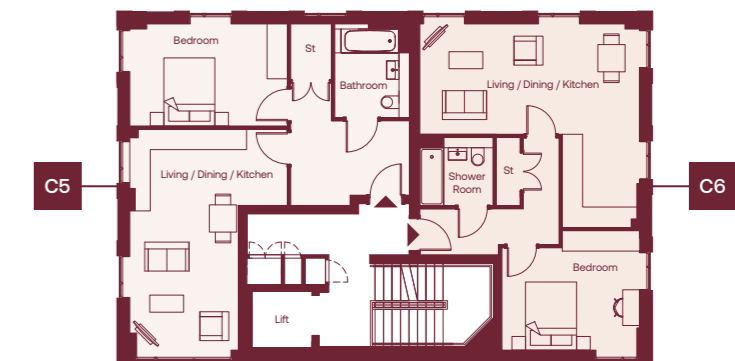
Level 02

Apartments C3–C4



Level 03

Apartments C5–C6



Duddell House

Levels 00 – 03

Apartments D1 – D13

00

Level 00 & Level 01

Duplex Apartment D1 /D2

| | | |
|-----------------------|-----------------|------------------|
| Living/Dining/Kitchen | 9.45m x 5.02m | 31'0" x 16'6" |
| Bedroom 1 | 5.35m x 2.78m | 17'7" x 9'1" |
| Bedroom 2 | 4.29m x 2.88m | 13'10" x 9'5" |
| Bedroom 3 | 3.64m x 2.15m | 11'11" x 7'1" |
| Garden | 5.10m x 3.65m | 16'9" x 12'0" |
| Total | 94.4 sqm | 1016 sqft |

Duplex Apartment D3

| | | |
|-----------------------|-----------------|------------------|
| Living/Dining/Kitchen | 9.45m x 5.02m | 31'0" x 16'6" |
| Bedroom 1 | 5.35m x 2.78m | 17'7" x 9'1" |
| Bedroom 2 | 4.29m x 2.88m | 13'10" x 9'5" |
| Bedroom 3 | 3.64m x 2.15m | 11'11" x 7'1" |
| Garden | 5.40m x 3.65m* | 17'9" x 12'0" |
| Total | 94.4 sqm | 1016 sqft |

*Max measurement taken.

01

Level 01

Apartment D4

| | | |
|-----------------------|---------------|-----------------|
| Living/Dining/Kitchen | 5.89m x 5.03m | 19'4" x 16'6" |
| Bedroom 1 | 4.58m x 3.39m | 15'0" x 11'2" |
| Bedroom 2 | 3.87m x 2.15m | 12'8" x 7'1" |
| Balcony | 8.40m x 1.75m | 27'7" x 5'9" |
| Total | 69 sqm | 743 sqft |

02

Level 02

Apartment D5

| | | |
|-----------------------|-----------------|-----------------|
| Living/Dining/Kitchen | 6.95m x 5.34m | 22'9" x 17'6" |
| Bedroom | 5.43m x 2.75m | 17'10" x 9'0" |
| Balcony | 2.80m x 1.55m | 9'2" x 5'1" |
| Total | 58.8 sqm | 633 sqft |

Apartment D6

| | | |
|-----------------------|-----------------|-----------------|
| Living/Dining/Kitchen | 5.58m x 4.42m | 18'4" x 14'6" |
| Bedroom | 4.16m x 2.97m | 13'8" x 9'9" |
| Balcony | 4.35m x 1.50m | 14'3" x 4'11" |
| Total | 50.6 sqm | 545 sqft |

Apartment D7

| | | |
|-----------------------|-----------------|-----------------|
| Living/Dining/Kitchen | 5.58m x 4.27m | 18'4" x 14'0" |
| Bedroom | 4.16m x 3.05m | 13'8" x 10'0" |
| Balcony | 4.35m x 1.50m | 14'3" x 4'11" |
| Total | 51.2 sqm | 551 sqft |

Apartment D8 / D9

| | | |
|-----------------------|-----------------|-----------------|
| Living/Dining/Kitchen | 6.95m x 3.94m | 22'10" x 12'11" |
| Bedroom | 4.50m x 3.59m | 14'9" x 11'9" |
| Balcony | 7.65m x 1.30m | 25'1" x 4'3" |
| Total | 51.2 sqm | 551 sqft |

03

Level 03

Apartment D10

| | | |
|-----------------------|-----------------|-----------------|
| Living/Dining/Kitchen | 6.95m x 5.34m | 22'9" x 17'6" |
| Bedroom | 5.43m x 2.75m | 17'10" x 9'0" |
| Balcony | 3.00m x 1.55m | 9'10" x 5'1" |
| Total | 59.4 sqm | 639 sqft |

Apartment D11

| | | |
|-----------------------|-----------------|-----------------|
| Living/Dining/Kitchen | 5.58m x 4.42m | 18'4" x 14'6" |
| Bedroom | 4.16m x 2.97m | 13'8" x 9'9" |
| Balcony | 4.35m x 1.50m | 14'3" x 4'11" |
| Total | 50.6 sqm | 545 sqft |

Apartment D12

| | | |
|-----------------------|-----------------|-----------------|
| Living/Dining/Kitchen | 5.58m x 4.27m | 18'4" x 14'0" |
| Bedroom | 4.16m x 3.05m | 13'8" x 10'0" |
| Balcony | 4.35m x 1.50m | 14'3" x 4'11" |
| Total | 51.2 sqm | 551 sqft |

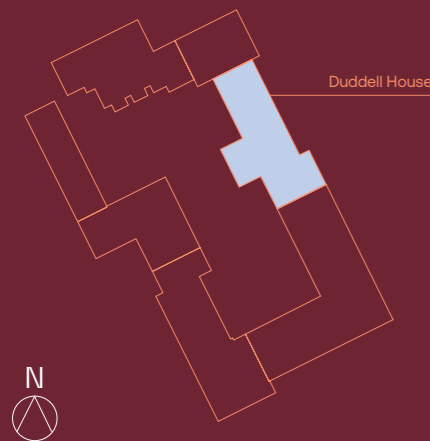
04

Level 04

Apartment D13

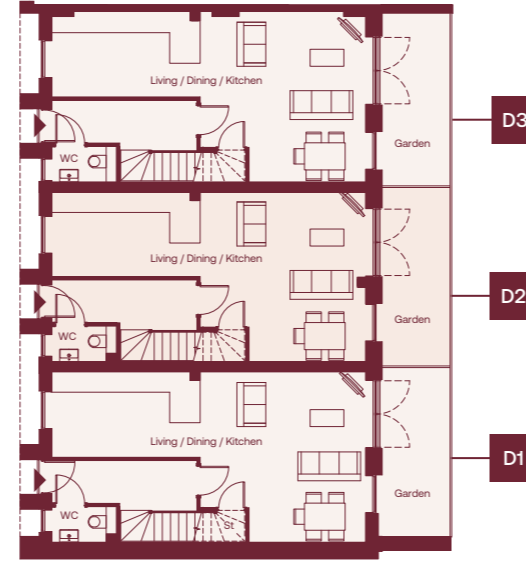
| | | |
|-----------------------|-----------------|-----------------|
| Living/Dining/Kitchen | 6.95m x 5.34m | 22'9" x 17'6" |
| Bedroom | 5.43m x 2.75m | 17'10" x 9'0" |
| Balcony | 2.80m x 1.55m | 9'2" x 5'1" |
| Total | 59.4 sqm | 639 sqft |

Site Plan



Level 00

Duplex D1-D3



Level 01

Duplex D1-D3 / Apartment D4



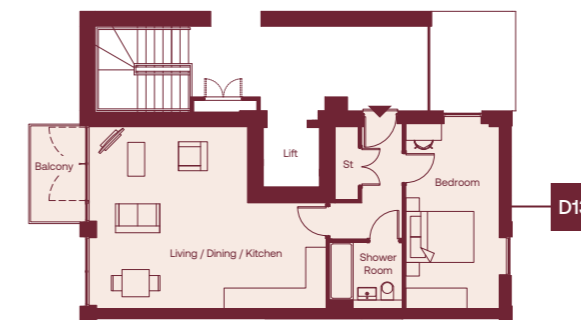
Level 03

Apartments D10-D12



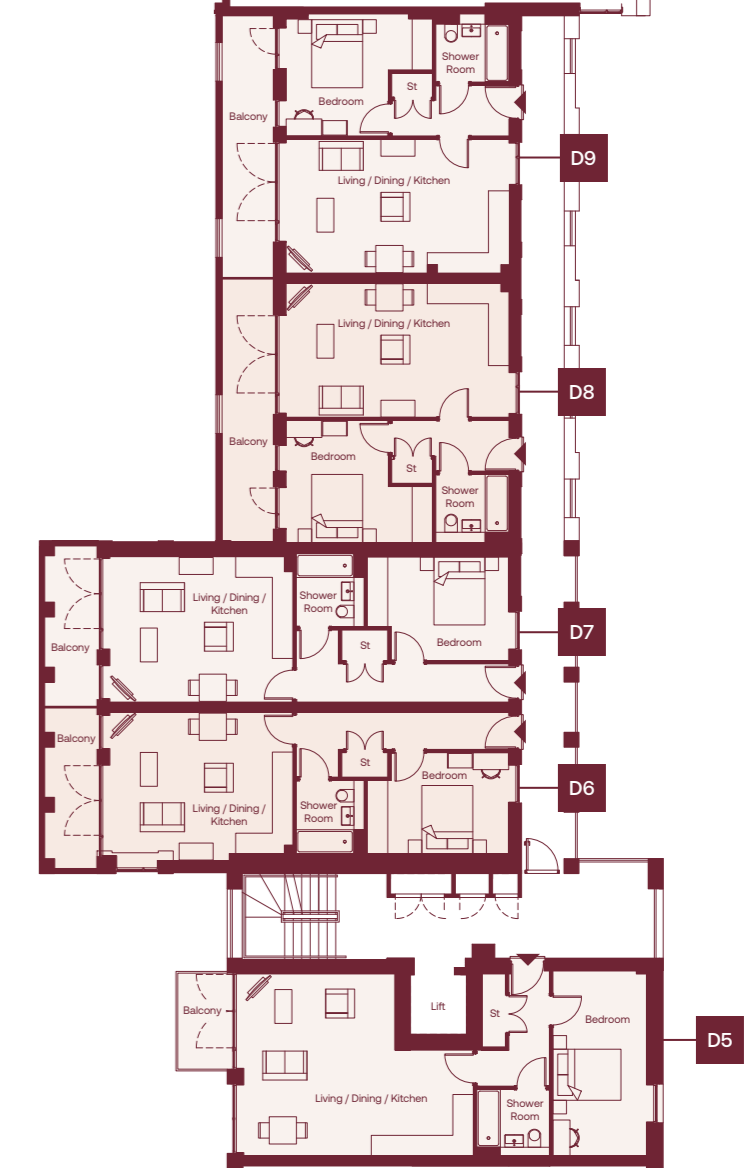
Level 04

Apartments D13



Level 02

Apartments D5-D9



Edison House

Levels 01 – 02

Apartments E1 – E18

01

Level 01

| Apartment E1 | 6.12m x 3.26m | 20'1" x 10'8" |
|-----------------------|----------------|----------------|
| Living/Dining/Kitchen | 4.79m x 2.76m | 15'9" x 9'0" |
| Bedroom 1 | 3.57m x 3.06m | 11'9" x 10'0" |
| Bedroom 2 | 12.15m x 1.80m | 39'10" x 5'11" |
| Terrace 1 | 6.40m x 1.80m | 21'0" x 5'11" |
| Terrace 2 | 6.97 sqm | 750 sqft |
| Total | | |

| Apartment E2 | 6.10m x 3.14m | 20'0" x 10'4" |
|-----------------------|---------------|----------------|
| Living/Dining/Kitchen | 4.79m x 2.76m | 15'9" x 9'0" |
| Bedroom 1 | 3.67m x 3.61m | 12'1" x 11'10" |
| Bedroom 2 | 6.35m x 1.80m | 20'10" x 5'11" |
| Terrace | 70 sqm | 753 sqft |
| Total | | |

| Apartment E3 / E6 | 5.10m x 4.48m | 16'9" x 14'8" |
|-----------------------|---------------|---------------|
| Living/Dining/Kitchen | 4.41m x 3.00m | 14'6" x 9'10" |
| Bedroom | 4.45m x 1.88m | 14'7" x 6'2" |
| Terrace | 52.6 sqm | 566 sqft |
| Total | | |

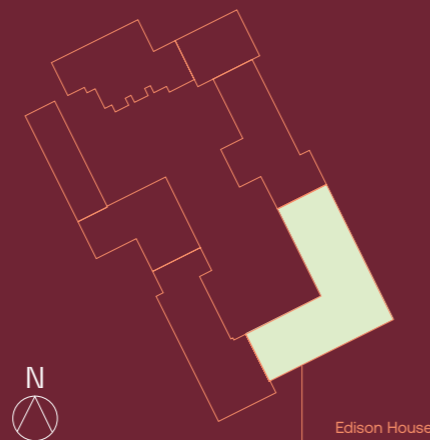
| Apartment E4 / E5 | 5.10m x 4.48m | 16'9" x 14'8" |
|-----------------------|---------------|---------------|
| Living/Dining/Kitchen | 4.41m x 3.00m | 14'6" x 9'10" |
| Bedroom 1 | 4.60m x 1.88m | 15'1" x 6'2" |
| Terrace | 52.6 sqm | 566 sqft |
| Total | | |

| Apartment E7 | 5.89m x 4.94m | 19'4" x 16'2" |
|-----------------------|----------------|---------------|
| Living/Dining/Kitchen | 4.35m x 2.89m | 14'3" x 9'6" |
| Bedroom 1 | 3.20m x 2.92m | 10'6" x 9'7" |
| Bedroom 2 | 3.16m x 3.06m | 10'3" x 10'0" |
| Bedroom 3 | 10.40m x 1.75m | 34'1" x 5'9" |
| Balcony | 91.2 sqm | 982 sqft |
| Total | | |

| Apartment E8 | 6.04m x 5.96m | 19'10" x 19'8" |
|-----------------------|---------------|----------------|
| Living/Dining/Kitchen | 4.50m x 3.00m | 14'9" x 9'10" |
| Bedroom 1 | 4.26m x 3.14m | 14'0" x 10'4" |
| Bedroom 2 | 6.40m x 1.75m | 21'0" x 5'9" |
| Balcony | 75.4 sqm | 812 sqft |
| Total | | |

| Apartment E9 | 5.24m x 5.96m | 17'2" x 19'8" |
|-----------------------|---------------|---------------|
| Living/Dining/Kitchen | 4.50m x 3.00m | 14'9" x 9'10" |
| Bedroom 1 | 4.30m x 2.36m | 14'1" x 7'8" |
| Bedroom 2 | 5.45m x 1.75m | 17'10" x 5'9" |
| Balcony | 65.7 sqm | 707 sqft |
| Total | | |

Site Plan



02

Level 02

| Apartment E10 | 6.12m x 3.26m | 20'1" x 10'8" |
|-----------------------|---------------|---------------|
| Living/Dining/Kitchen | 4.79m x 2.76m | 15'9" x 9'0" |
| Bedroom 1 | 3.57m x 3.06m | 11'9" x 10'0" |
| Bedroom 2 | 6.30m x 1.65m | 20'8" x 5'5" |
| Balcony | 69.7 sqm | 750 sqft |
| Total | | |

| Apartment E11 | 6.10m x 3.14m | 20'0" x 10'4" |
|-----------------------|---------------|----------------|
| Living/Dining/Kitchen | 4.79m x 2.76m | 15'9" x 9'0" |
| Bedroom 1 | 3.67m x 3.61m | 12'1" x 11'10" |
| Bedroom 2 | 6.30m x 1.65m | 20'8" x 5'5" |
| Balcony | 70.0 sqm | 753 sqft |
| Total | | |

| Apartment E12 / E13 / E14 / E15 | 5.10m x 4.48m | 16'9" x 14'8" |
|---------------------------------|---------------|---------------|
| Living/Dining/Kitchen | 4.41m x 3.00m | 14'6" x 9'10" |
| Bedroom | 2.70m x 1.55m | 8'10" x 5'1" |
| Balcony | 52.6 sqm | 566 sqft |
| Total | | |

| Apartment E16 | 7.02m x 4.63m | 23'0" x 15'2" |
|-----------------------|---------------|---------------|
| Living/Dining/Kitchen | 4.50m x 3.13m | 14'9" x 10'3" |
| Bedroom | 2.80m x 1.55m | 9'2" x 5'1" |
| Balcony | 61.4 sqm | 661 sqft |
| Total | | |

| Apartment E17 | 8.77m x 3.16m | 28'9" x 10'5" |
|-----------------------|---------------|---------------|
| Living/Dining/Kitchen | 4.39m x 2.76m | 14'5" x 9'0" |
| Bedroom | 2.80m x 1.55m | 9'2" x 5'1" |
| Balcony | 52.6 sqm | 566 sqft |
| Total | | |

| Apartment E18 | 7.60m x 4.24m | 24'11" x 13'11" |
|-----------------------|---------------|-----------------|
| Living/Dining/Kitchen | 5.43m x 2.76m | 17'10" x 9'0" |
| Bedroom 1 | 3.50m x 2.33m | 11'6" x 7'8" |
| Bedroom 2 | 2.80m x 1.55m | 9'2" x 5'1" |
| Balcony | 65.5 sqm | 706 sqft |
| Total | | |

Level 01

Apartments E1-E9



Level 02

Apartments E10-E18



Computer generated image – indicative only.

Edison House

Levels 03 – 05
Apartments E19 – E40

03

| Level 03 | | | |
|--|-----------------|-----------------|--|
| Apartment E19 | | | |
| Living/Dining/Kitchen | 6.12m x 3.26m | 20'1" x 10'8" | |
| Bedroom 1 | 4.79m x 2.76m | 15'9" x 9'0" | |
| Bedroom 2 | 3.57m x 3.06m | 11'9" x 10'0" | |
| Balcony | 6.30m x 1.65m | 20'8" x 5'4" | |
| Total | 69.7 sqm | 760 sqft | |
| Apartment E20 | | | |
| Living/Dining/Kitchen | 6.10m x 3.14m | 20'0" x 10'4" | |
| Bedroom 1 | 4.79m x 2.76m | 15'9" x 9'0" | |
| Bedroom 2 | 3.67m x 3.61m | 12'1" x 11'0" | |
| Balcony | 6.30m x 1.65m | 20'8" x 5'4" | |
| Total | 70 sqm | 753 sqft | |
| Apartment E21 / E22 / E23 / E24 | | | |
| Living/Dining/Kitchen | 5.10m x 4.48m | 16'9" x 14'8" | |
| Bedroom 1 | 4.41m x 3.00m | 14'6" x 9'10" | |
| Balcony | 2.70m x 1.55m | 8'10" x 5'1" | |
| Total | 52.6 sqm | 566 sqft | |
| Apartment E25 | | | |
| Living/Dining/Kitchen | 7.02m x 4.63m | 23'0" x 15'2" | |
| Bedroom | 4.50m x 3.13m | 14'9" x 10'3" | |
| Balcony | 2.88m x 1.55m | 9'5" x 5'1" | |
| Total | 61.4 sqm | 661 sqft | |
| Apartment E26 | | | |
| Living/Dining/Kitchen | 8.77m x 3.16m | 28'9" x 10'5" | |
| Bedroom | 4.39m x 2.76m | 14'5" x 9'0" | |
| Balcony | 2.88m x 1.55m | 9'5" x 5'1" | |
| Total | 52.6 sqm | 566 sqft | |
| Apartment E27 | | | |
| Living/Dining/Kitchen | 7.60m x 4.24m | 24'11" x 13'11" | |
| Bedroom 1 | 4.24m x 2.76m | 13'11" x 9'0" | |
| Bedroom 2 | 3.50m x 2.33m | 11'6" x 7'8" | |
| Balcony | 2.95m x 1.55m | 9'8" x 5'1" | |
| Total | 65.6 sqm | 706 sqft | |

Site Plan



04

| Level 04 | | | |
|--|-----------------|-----------------|--|
| Apartment E28 | | | |
| Living/Dining/Kitchen | 6.12m x 3.26m | 20'1" x 10'8" | |
| Bedroom 1 | 4.79m x 2.76m | 15'9" x 9'0" | |
| Bedroom 2 | 3.57m x 3.06m | 11'9" x 10'0" | |
| Balcony | 6.30m x 1.65m | 20'8" x 5'4" | |
| Total | 69.7 sqm | 750 sqft | |
| Apartment E29 | | | |
| Living/Dining/Kitchen | 6.10m x 3.14m | 20'0" x 10'4" | |
| Bedroom 1 | 4.79m x 2.76m | 15'9" x 9'0" | |
| Bedroom 2 | 3.67m x 3.61m | 12'1" x 11'0" | |
| Balcony | 6.30m x 1.65m | 20'8" x 5'4" | |
| Total | 70 sqm | 753 sqft | |
| Apartment E30 / E31 / E32 / E33 | | | |
| Living/Dining/Kitchen | 5.10m x 4.48m | 16'9" x 14'8" | |
| Bedroom | 4.41m x 3.00m | 14'6" x 9'10" | |
| Balcony | 2.70m x 1.55m | 8'10" x 5'1" | |
| Total | 52.6 sqm | 566 sqft | |
| Apartment E34 | | | |
| Living/Dining/Kitchen | 7.60m x 4.24m | 24'11" x 13'11" | |
| Bedroom 1 | 4.24m x 2.76m | 13'11" x 9'0" | |
| Bedroom 2 | 3.50m x 2.33m | 11'6" x 7'8" | |
| Balcony | 2.80m x 1.55m | 9'2" x 5'1" | |
| Total | 65.6 sqm | 706 sqft | |
| Level 05 | | | |
| Apartment E35 | | | |
| Living/Dining/Kitchen | 6.12m x 3.26m | 20'1" x 10'8" | |
| Bedroom 1 | 4.79m x 2.76m | 15'9" x 9'0" | |
| Bedroom 2 | 3.57m x 3.06m | 11'9" x 10'0" | |
| Balcony | 6.30m x 1.65m | 20'8" x 5'4" | |
| Total | 69.7 sqm | 750 sqft | |
| Apartment E36 | | | |
| Living/Dining/Kitchen | 6.10m x 3.14m | 20'0" x 10'4" | |
| Bedroom 1 | 4.79m x 2.76m | 15'9" x 9'0" | |
| Bedroom 2 | 3.67m x 3.61m | 12'1" x 11'0" | |
| Balcony | 6.30m x 1.65m | 20'8" x 5'4" | |
| Total | 70 sqm | 753 sqft | |
| Apartment E37 / E38 / E39 / E40 | | | |
| Living/Dining/Kitchen | 5.10m x 4.48m | 16'9" x 14'8" | |
| Bedroom | 4.41m x 3.00m | 14'6" x 9'10" | |
| Balcony | 2.70m x 1.55m | 8'10" x 5'1" | |
| Total | 52.6 sqm | 566 sqft | |

Level 03 Apartments E19-E27



Level 04 Apartments E28-E34



Level 05 Apartments E35-E40



Computer generated image – indicative only.

Faraday House

Levels 01 - 03

Apartments F1 - F18

01

Level 01

| Apartment F1 | 9.66m x 3.27m | 31'8" x 10'9" |
|-----------------------|-----------------|-----------------|
| Living/Dining/Kitchen | 5.82m x 2.75m | 19'1" x 9'0" |
| Bedroom | 6.30m x 1.62m | 20'8" x 5'3" |
| Terrace | | |
| Total | 61.7 sqm | 664 sqft |

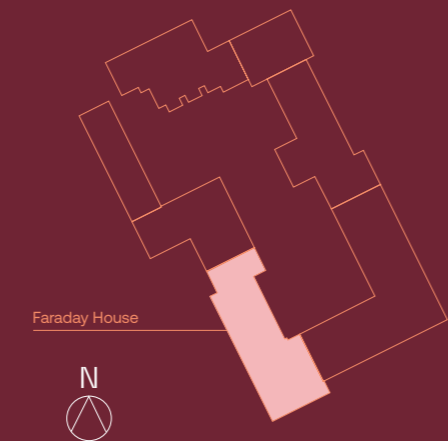
| Apartment F2 / F3 | 5.92m x 3.88m | 19'5" x 12'9" |
|-----------------------|-----------------|-----------------|
| Living/Dining/Kitchen | 4.67m x 2.90m | 15'4" x 9'6" |
| Bedroom 1 | 4.07m x 2.14m | 13'4" x 7'0" |
| Bedroom 2 | 6.30m x 1.62m | 20'8" x 5'3" |
| Terrace | | |
| Total | 64.1 sqm | 690 sqft |

| Apartment F4 | 7.17m x 3.29m | 23'6" x 10'9" |
|-----------------------|-----------------|-----------------|
| Living/Dining/Kitchen | 4.14m x 3.00m | 13'7" x 9'10" |
| Bedroom 1 | 4.03m x 2.06m | 13'3" x 6'9" |
| Bedroom 2 | 5.36m x 1.95m | 17'7" x 6'5" |
| Terrace | | |
| Total | 64.3 sqm | 692 sqft |

| Apartment F5 | 7.27m x 6.02m | 23'10" x 19'9" |
|-----------------------|-----------------|-----------------|
| Living/Dining/Kitchen | 4.82m x 3.09m | 15'10" x 10'2" |
| Bedroom | 6.30m x 1.62m | 20'8" x 5'3" |
| Terrace | | |
| Total | 63.7 sqm | 686 sqft |

| Apartment F6 | 6.02m x 5.84m | 19'9" x 19'2" |
|-----------------------|-----------------|-----------------|
| Living/Dining/Kitchen | 4.83m x 3.00m | 15'10" x 9'10" |
| Bedroom 1 | 4.83m x 2.90m | 15'10" x 9'6" |
| Bedroom 2 | 4.83m x 2.17m | 15'10" x 7'2" |
| Bedroom 3 | 6.30m x 1.62m | 20'8" x 5'3" |
| Terrace | | |
| Total | 89.1 sqm | 959 sqft |

Site Plan



02

Level 02

| Apartment F7 / F8 / F9 | 8.66m x 3.27m | 28'5" x 10'9" |
|------------------------|-----------------|-----------------|
| Living/Dining/Kitchen | 4.44m x 2.75m | 14'7" x 9'0" |
| Bedroom | 5.90m x 1.50m | 19'4" x 4'11" |
| Balcony | | |
| Total | 53.3 sqm | 574 sqft |

| Apartment F10 | 7.17m x 3.43m | 23'6" x 11'3" |
|-----------------------|-----------------|-----------------|
| Living/Dining/Kitchen | 4.14m x 3.00m | 13'7" x 9'10" |
| Bedroom 1 | 3.98m x 2.07m | 13'1" x 6'9" |
| Bedroom 2 | 3.38m x 1.55m | 11'1" x 5'1" |
| Balcony | | |
| Total | 64.4 sqm | 693 sqft |

| Apartment F11 | 8.66m x 3.27m | 28'5" x 10'9" |
|-----------------------|-----------------|-----------------|
| Living/Dining/Kitchen | 4.44m x 2.75m | 14'7" x 9'0" |
| Bedroom | 5.90m x 1.50m | 19'4" x 4'11" |
| Balcony | | |
| Total | 53.3 sqm | 574 sqft |

| Apartment F12 | 6.02m x 4.77m | 19'9" x 15'8" |
|-----------------------|-----------------|-----------------|
| Living/Dining/Kitchen | 4.91m x 3.12m | 16'1" x 10'3" |
| Bedroom 1 | 4.91m x 2.17m | 16'1" x 7'2" |
| Bedroom 2 | 4.91m x 2.17m | 16'1" x 7'2" |
| Bedroom 3 | 5.90m x 1.50m | 19'4" x 4'11" |
| Balcony | | |
| Total | 77.4 sqm | 833 sqft |

03

Level 03

| Apartment F13 / F14 / F15 | 8.66m x 3.27m | 28'5" x 10'9" |
|---------------------------|-----------------|-----------------|
| Living/Dining/Kitchen | 4.44m x 2.75m | 14'7" x 9'0" |
| Bedroom | 5.90m x 1.50m | 19'4" x 4'11" |
| Balcony | | |
| Total | 53.3 sqm | 574 sqft |

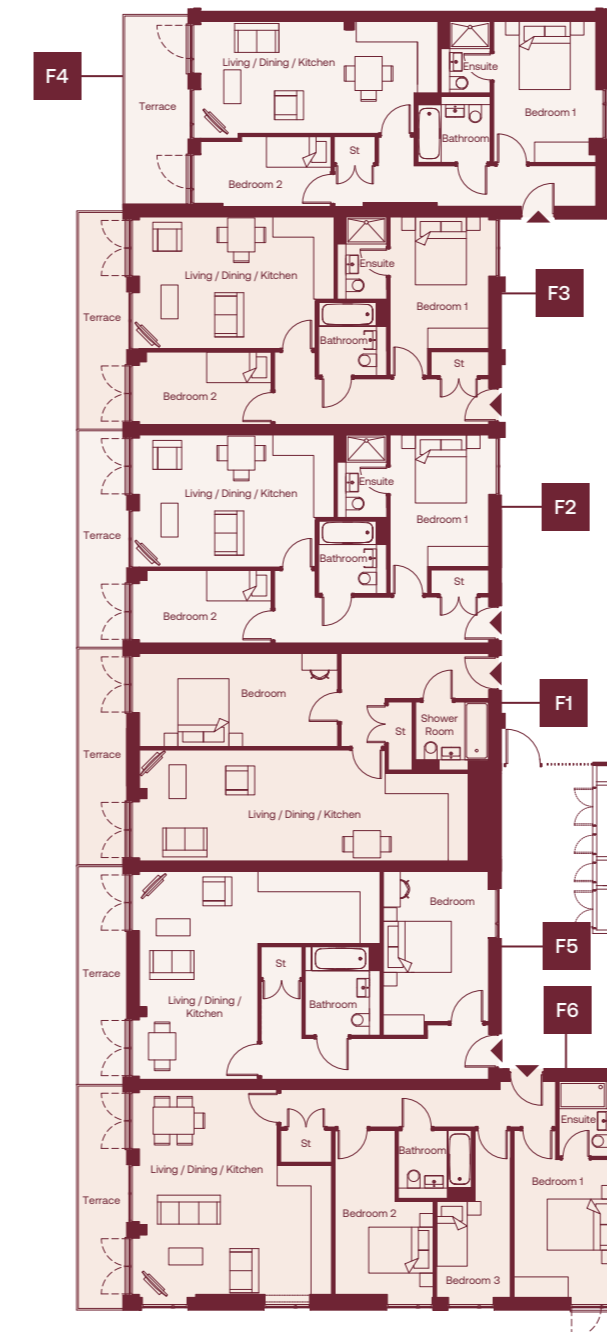
| Apartment F16 | 7.17m x 3.43m | 23'6" x 11'3" |
|-----------------------|-----------------|-----------------|
| Living/Dining/Kitchen | 4.14m x 3.00m | 13'7" x 9'10" |
| Bedroom 1 | 3.98m x 2.07m | 13'1" x 6'9" |
| Bedroom 2 | 3.38m x 1.55m | 11'1" x 5'1" |
| Balcony | | |
| Total | 64.4 sqm | 693 sqft |

| Apartment F17 | 8.66m x 3.27m | 28'5" x 10'9" |
|-----------------------|-----------------|-----------------|
| Living/Dining/Kitchen | 4.44m x 2.75m | 14'7" x 9'0" |
| Bedroom | 5.90m x 1.50m | 19'4" x 4'11" |
| Balcony | | |
| Total | 53.3 sqm | 574 sqft |

| Apartment F18 | 6.02m x 4.77m | 19'9" x 15'8" |
|-----------------------|-----------------|-----------------|
| Living/Dining/Kitchen | 4.91m x 3.12m | 16'1" x 10'3" |
| Bedroom 1 | 4.91m x 2.17m | 16'1" x 7'2" |
| Bedroom 2 | 4.91m x 2.17m | 16'1" x 7'2" |
| Bedroom 3 | 5.90m x 1.50m | 19'4" x 4'11" |
| Balcony | | |
| Total | 77.4 sqm | 833 sqft |

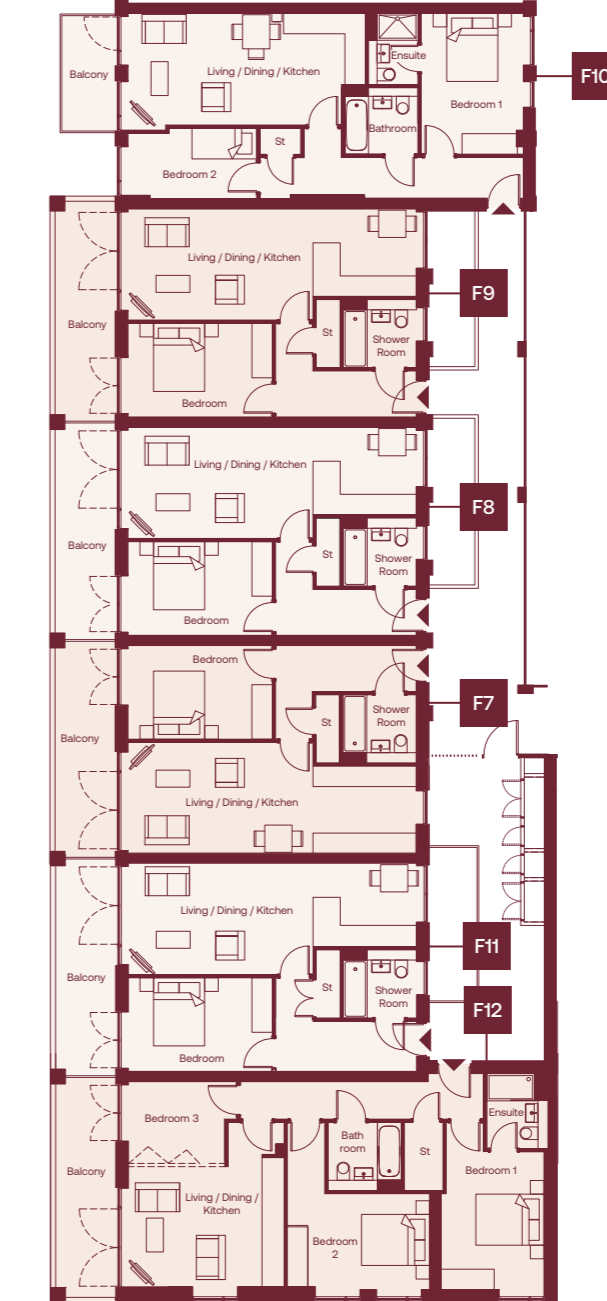
Block F / Level 01

Apartments F1-F6



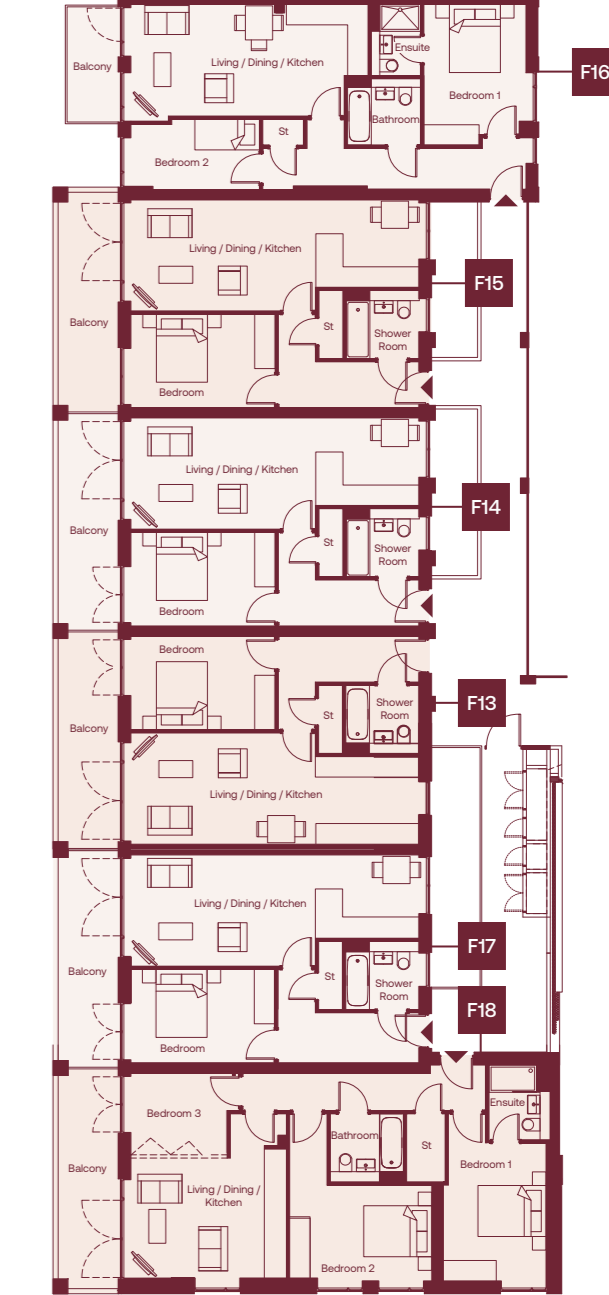
Block F / Level 02

Apartments F7-F12



Block F / Level 03

Apartments F13-F18



Computer generated image - indicative only.

Goode House

Levels 00 – 03

Houses G1 – G3

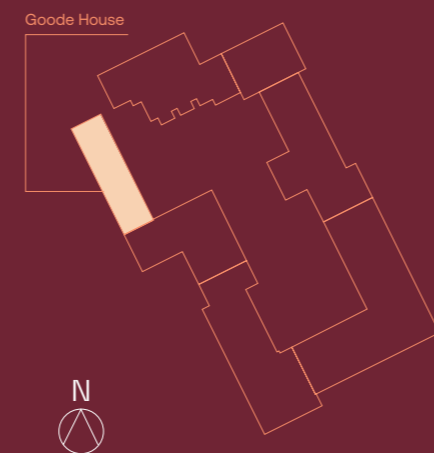
| 00 | Levels 00-03 | | |
|----|-----------------------|----------------|------------------|
| 01 | House G1 / G2 | | |
| 02 | Living/Dining/Kitchen | 6.78m x 5.60m | 22'3" x 18'4" |
| 03 | Terrace | 6.80m x 5.50m | 22'4" x 18'1" |
| | Bedroom 1 | 4.53m x 3.56m | 14'11" x 11'8" |
| | Bedroom 2 | 4.52m x 3.06m | 14'10" x 10'1" |
| | Bedroom 3 | 4.10m x 2.43m | 13'5" x 8'0" |
| | Roof terrace | 6.80m x 1.45m | 22'4" x 4'9" |
| | Garden | 5.95m x 2.65m | 19'6" x 8'8" |
| | Total | 116 sqm | 1249 sqft |

| 00 | Levels 00-03 | | |
|----|-----------------------|----------------|------------------|
| 01 | House G3 | | |
| 02 | Living/Dining/Kitchen | 6.78m x 5.60m | 22'3" x 18'4" |
| 03 | Terrace | 6.80m x 5.50m | 22'4" x 18'1" |
| | Bedroom 1 | 4.53m x 3.56m | 14'11" x 11'8" |
| | Bedroom 2 | 4.52m x 3.06m | 14'10" x 10'1" |
| | Bedroom 3 | 4.10m x 2.43m | 13'5" x 8'0" |
| | Roof terrace | 6.80m x 1.45m | 22'4" x 4'9" |
| | Garden | 4.45m x 1.8m | 19'6" x 8'8" |
| | Total | 116 sqm | 1249 sqft |



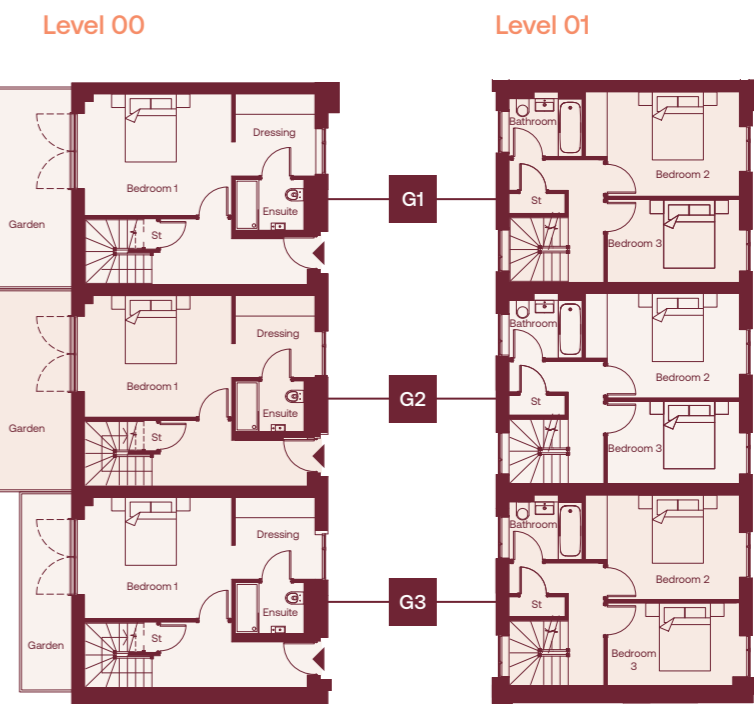
Computer generated image – indicative only.

Site Plan



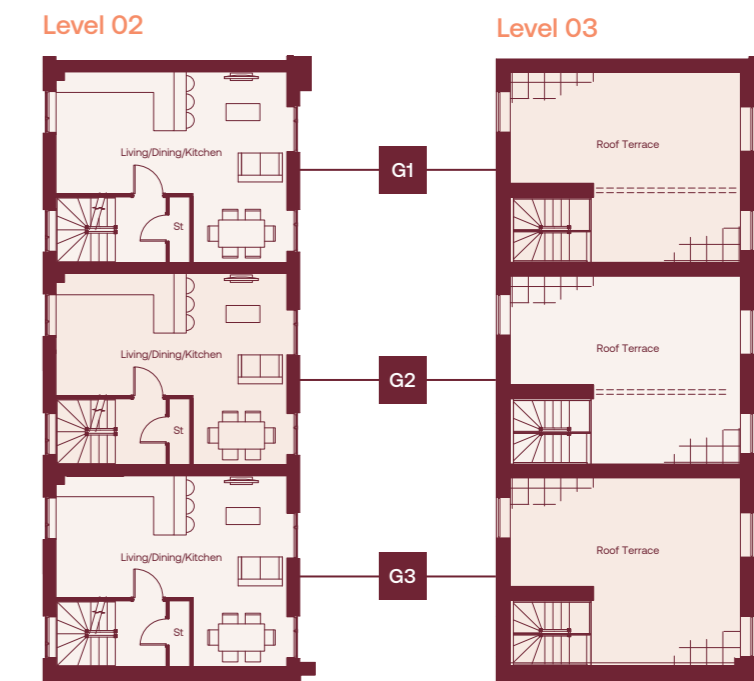
Level 00 & 01

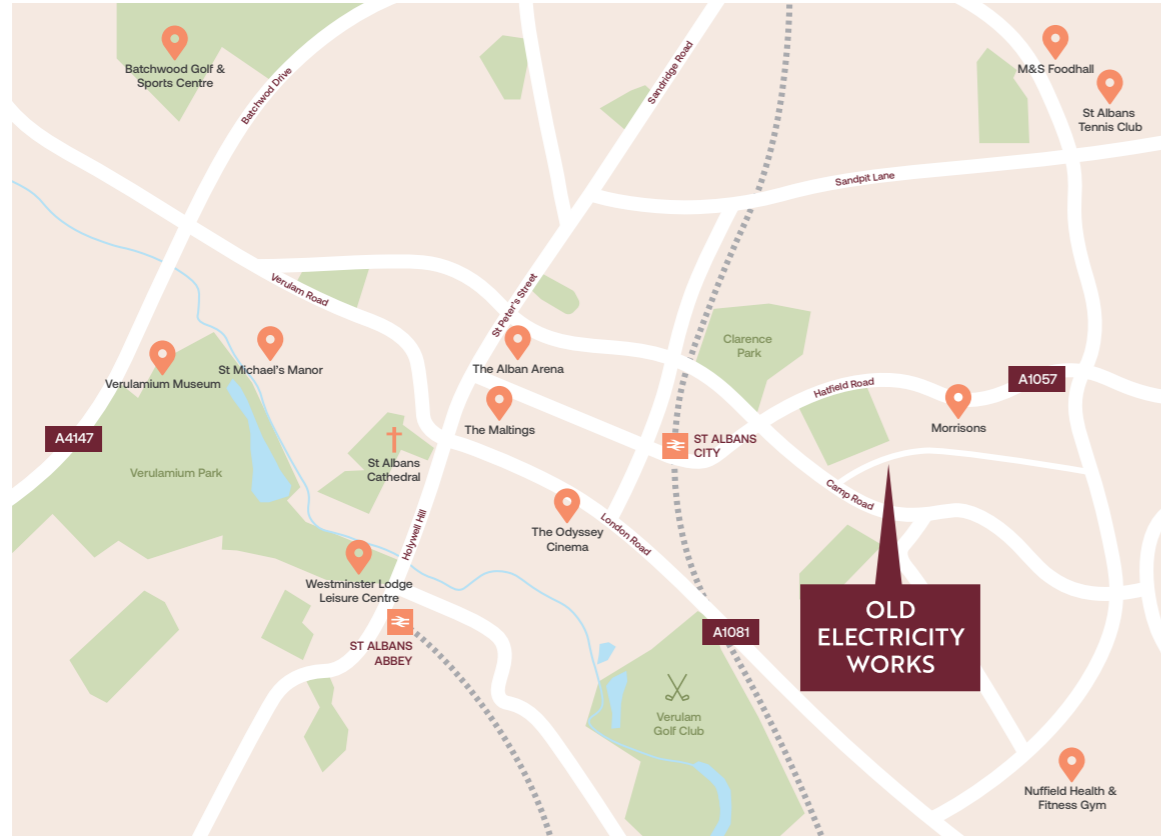
Houses G1-G3



Level 02 & 03

Houses G1-G3





Old Electricity Works
 Campfield Road
 St Albans
 Hertfordshire
 AL1 5HT

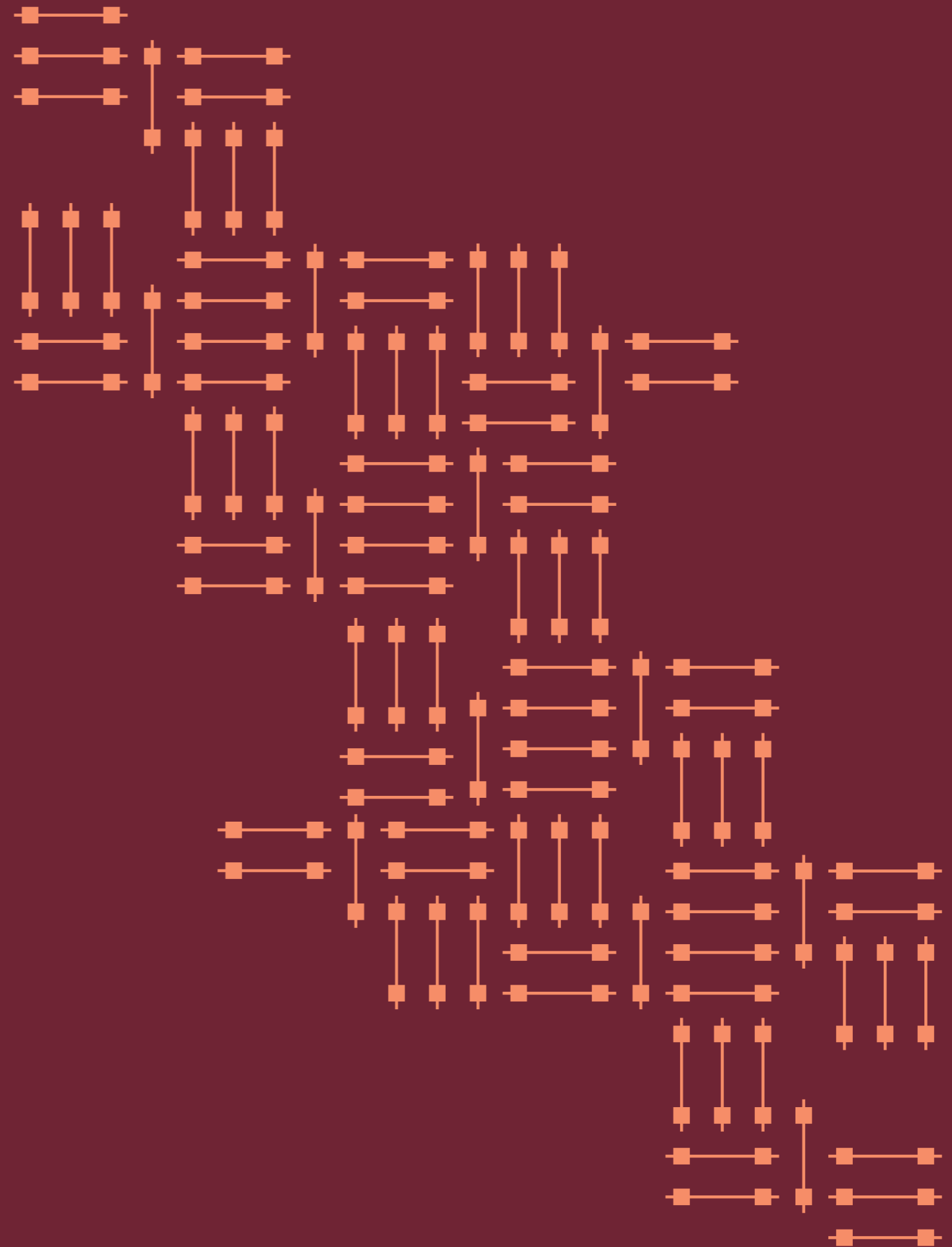


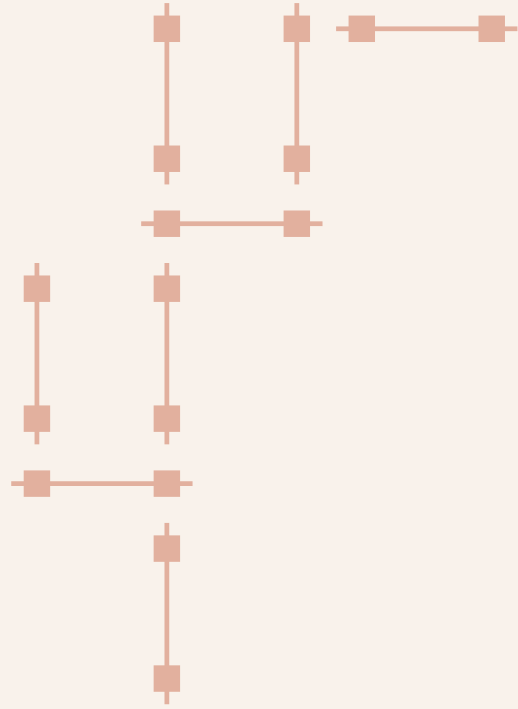
Sales enquiries

01992 940955

herts@lanesexclusivehomes.co.uk
lanesexclusivehomes.co.uk

IMPORTANT NOTICE
 Whilst every care has been taken to ensure accuracy these particulars do not constitute part of any offer or contract and the right to change plans, specifications and materials is reserved. All measurements are given as a guide only. Purchasers are advised to check plot specific dimensions and specifications prior to reservation. No liability can be accepted for any errors arising there from. Development images are indicative and may vary. Specifications for this development may not include fixtures, fittings and furnishings shown in the photographs and illustrations. Features and finishes are shown for illustrative purposes only and are not intended to form part of any contract or warranty. No responsibility is taken for any other error, omission, or mis-statements in these particulars. Neither the vendor nor its agents make or give, whether in these particulars, during the negotiations or otherwise, any representation or warranty in relation to this property. Designed by Fresh Lemon.





 James Taylor Homes

