

HEATHCOTE





IN ONE OF HADLEY WOOD'S MOST
HIGHLY SOUGHT-AFTER LOCATIONS,
DISCOVER NINE CONTEMPORARY
APARTMENTS OF EXEMPLARY DESIGN.

WELCOME TO
HEATHCOTE HOUSE






HEATHCOTE
90


HEATHCOTE
90



5





LOCATION

WHERE THE BEST THINGS IN LIFE COME TOGETHER

Here is an address that truly offers its residents the lifestyle they have dreamed of.

Enjoy an abundance of greenery, golf courses and country walks, and all the benefits of desirable village surroundings, whilst being wonderfully close to the buzz of central London via excellent transport connections.





TRAVEL

TUBE

- HIGH BARNET
⊕ Northern Line
- EUSTON
28 mins
- KING'S CROSS
32 mins
- OLD STREET
34 mins
- LONDON BRIDGE
⊕ via Bank
49 mins

RAIL

- HADLEY WOOD
≡ National Rail
- ALEXANDRA PALACE
11 mins
- FINSBURY PARK
15 mins
- Highbury & Islington
26 mins
- MOORGATE
31 mins







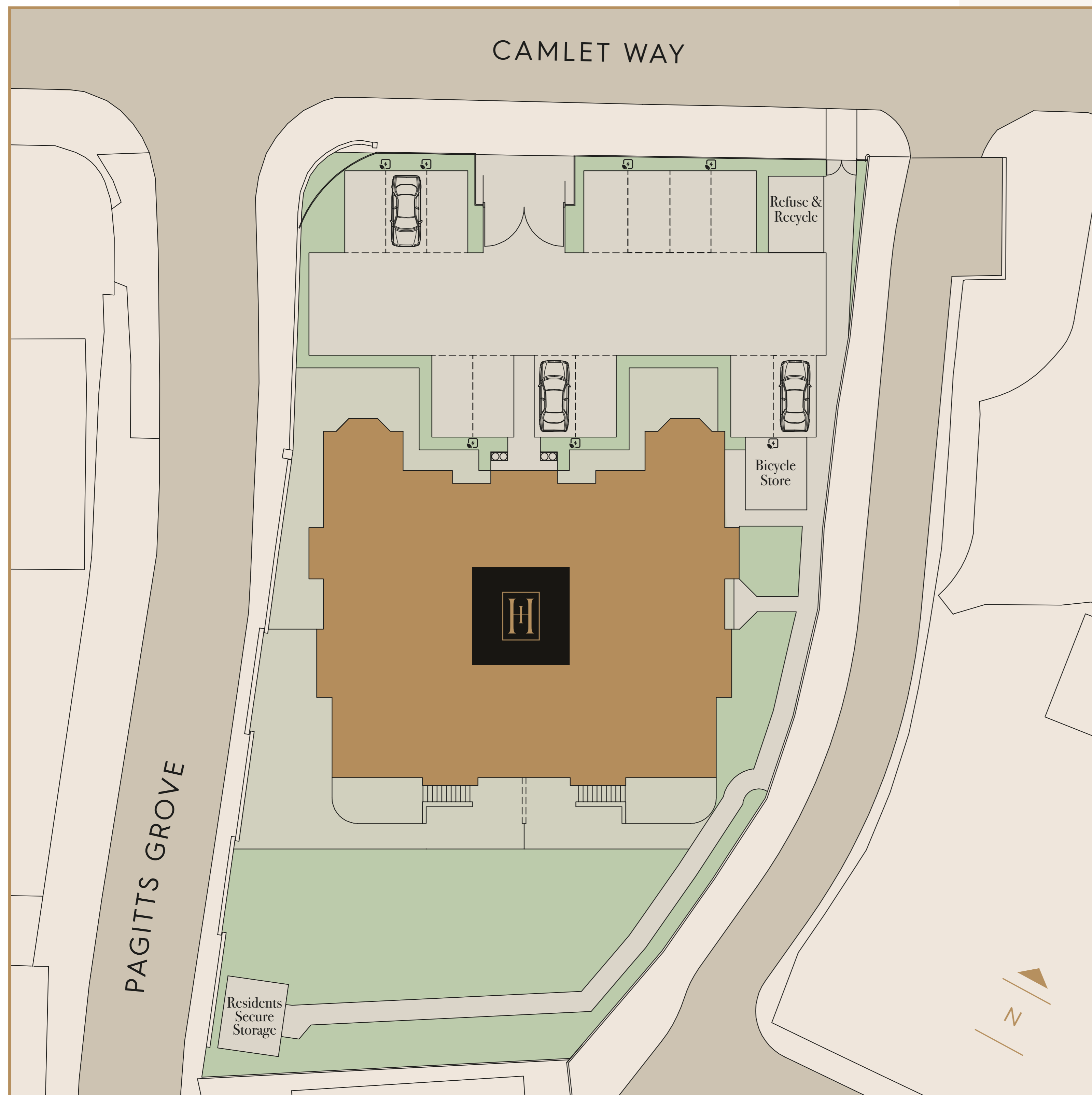












SITE MAP

 Electric car charging points

FLOOR PLANS

APARTMENT 1

INTERNAL AREA

986 sqft

EXTERNAL AREA

371 sqft

LIVING/DINING/KITCHEN

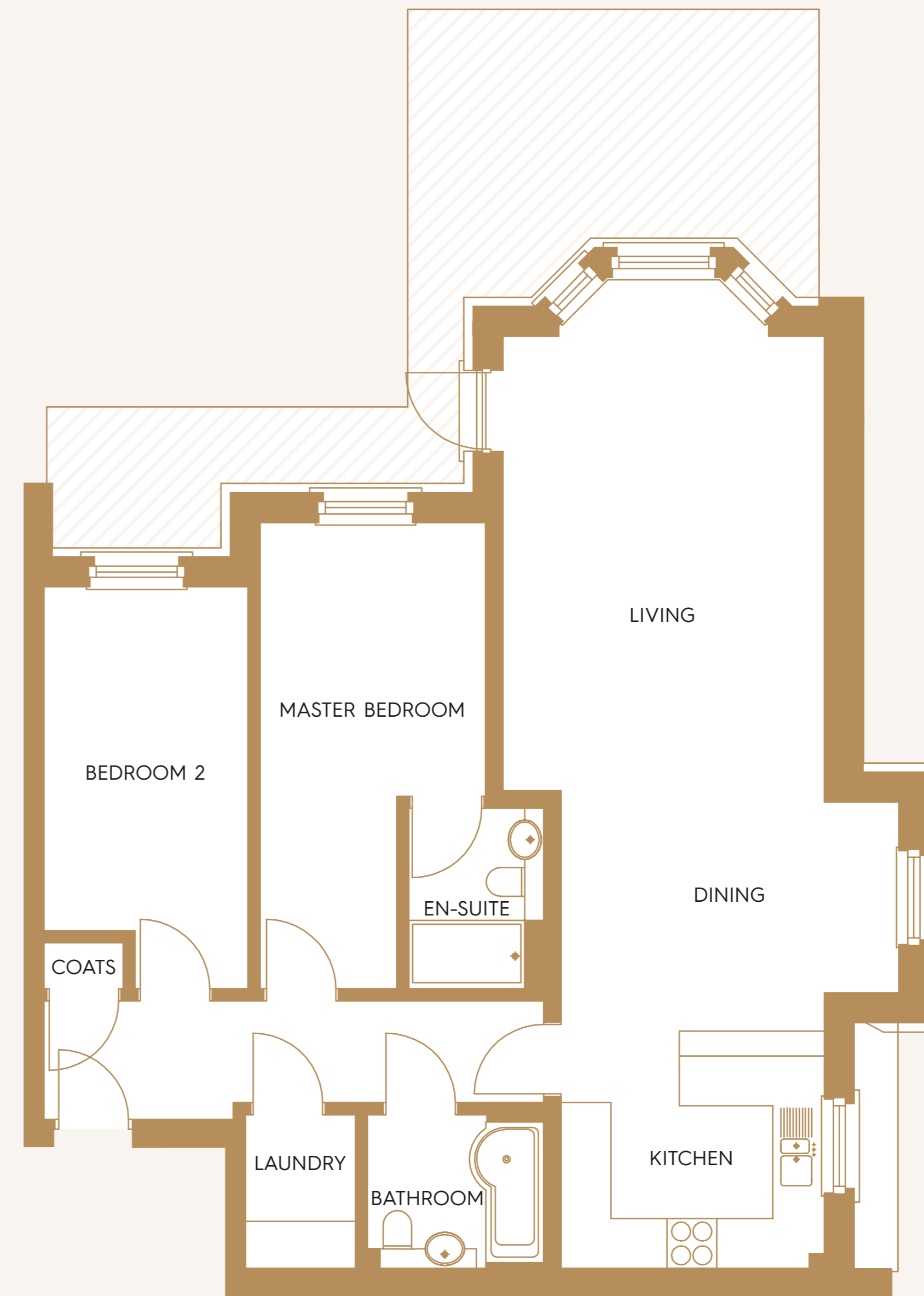
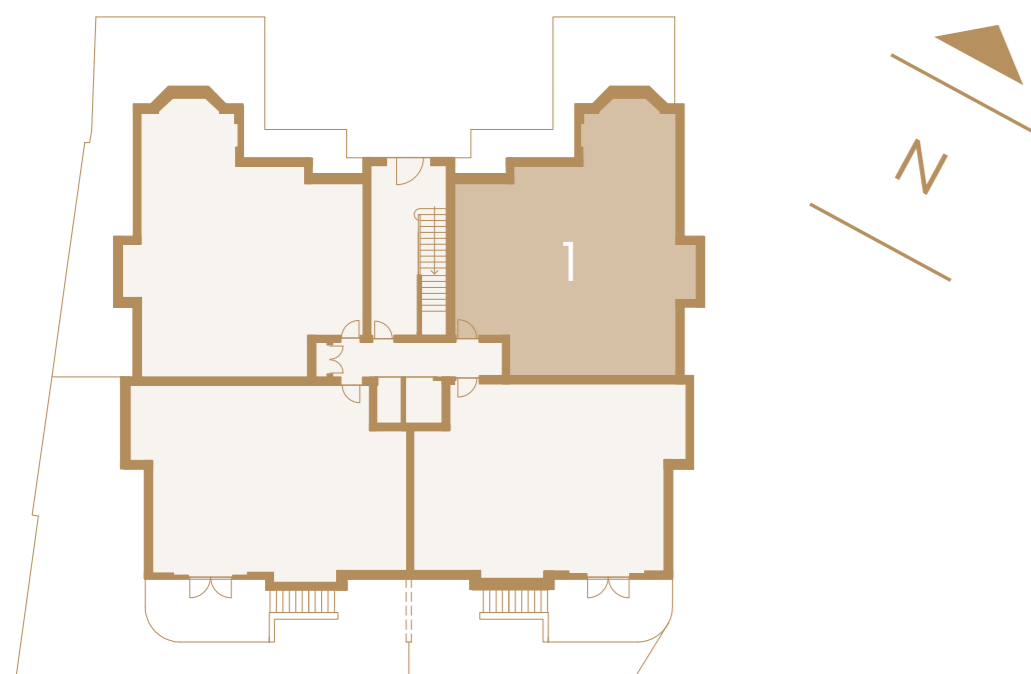
12m X 3.95m | 39'3" X 13'0"

MASTER BEDROOM

5.7m X 2.79m | 18'8" X 9'2"

BEDROOM 2

4.92m X 2.53m | 16'2" X 8'4"



16



FLOOR PLANS

APARTMENT 2

INTERNAL AREA

929 sqft

EXTERNAL AREA

559 sqft

LIVING/DINING/KITCHEN

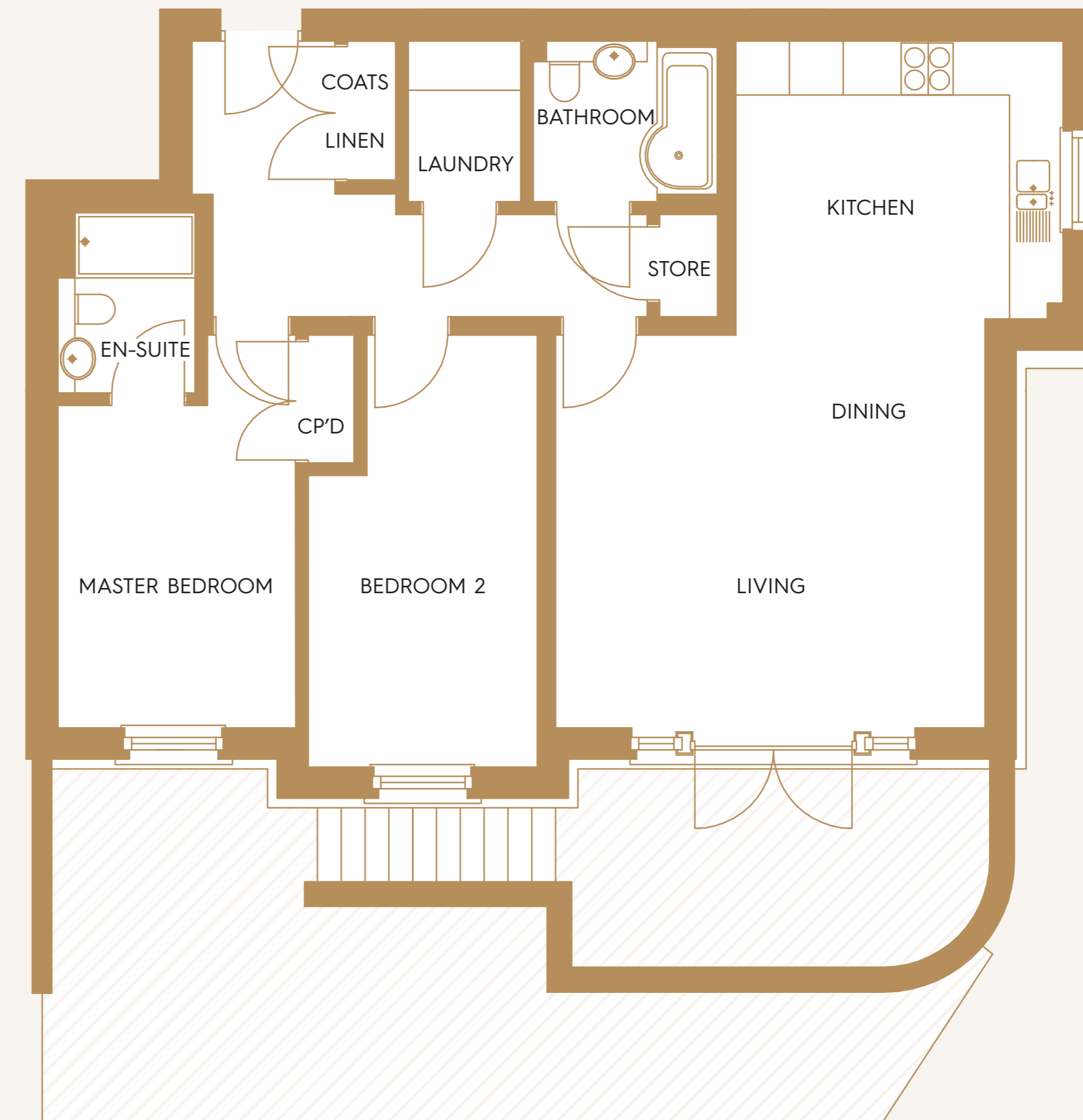
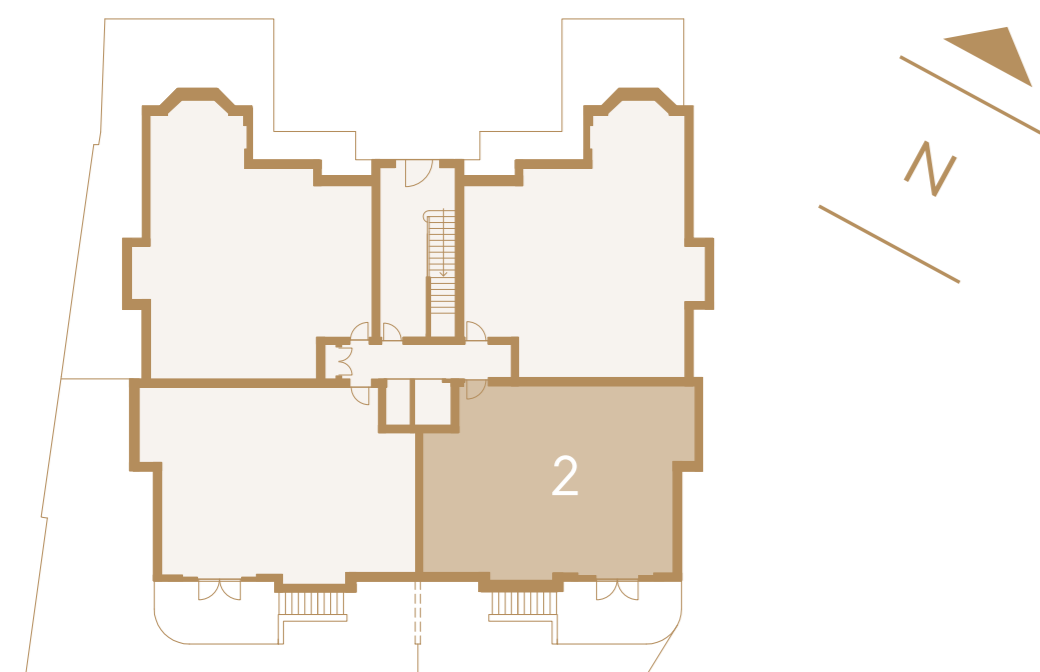
7.91m X 5m | 25'11" X 16'5"

MASTER BEDROOM

4.54m X 2.81m | 14'11" X 9'2"

BEDROOM 2

5.1m X 2.71m | 16'9" X 8'11"



17



FLOOR PLANS

APARTMENT 3

INTERNAL AREA

929 sqft

EXTERNAL AREA

1,345 sqft

LIVING/DINING/KITCHEN

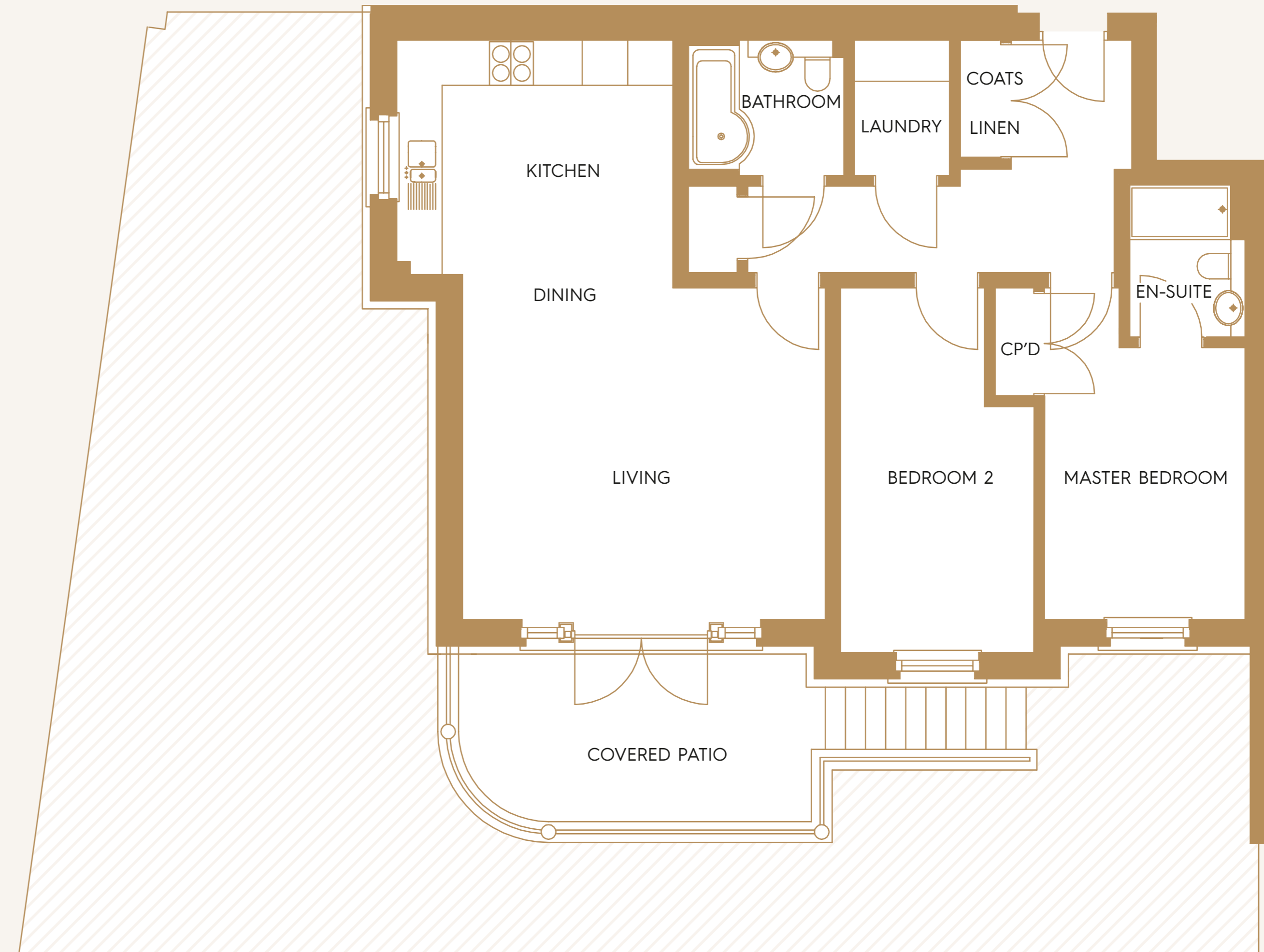
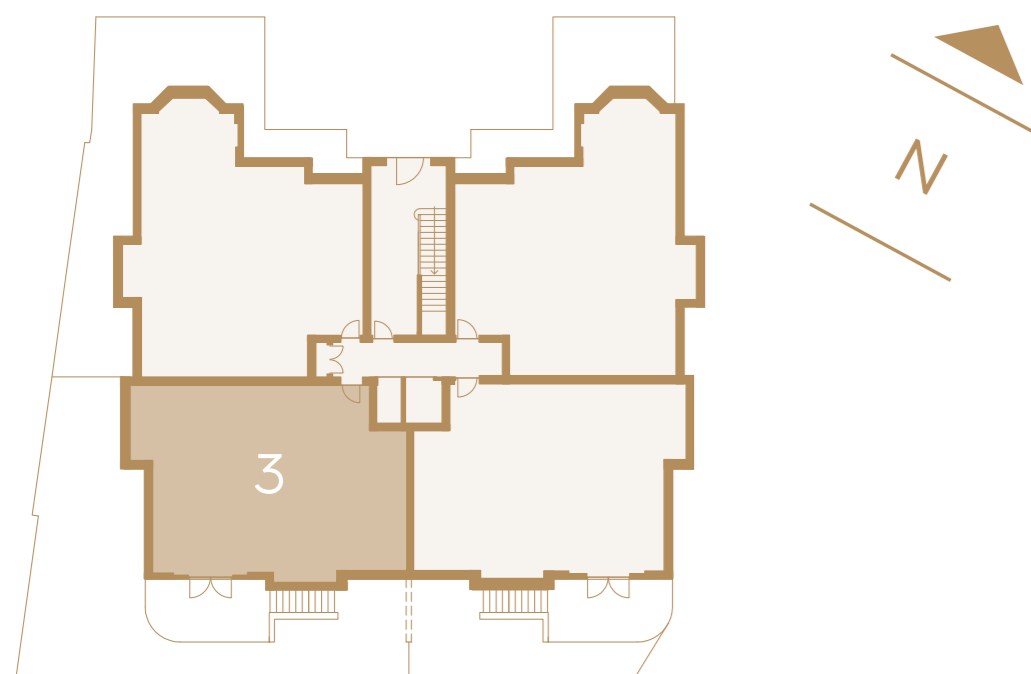
7.91m X 5m | 25'11" X 16'5"

MASTER BEDROOM

4.54m X 2.81m | 14'11" X 9'2"

BEDROOM 2

5.1m X 2.71m | 16'9" X 8'11"



FLOOR PLANS

APARTMENT 4

INTERNAL AREA

986 sqft

EXTERNAL AREA

742 sqft

LIVING/DINING/KITCHEN

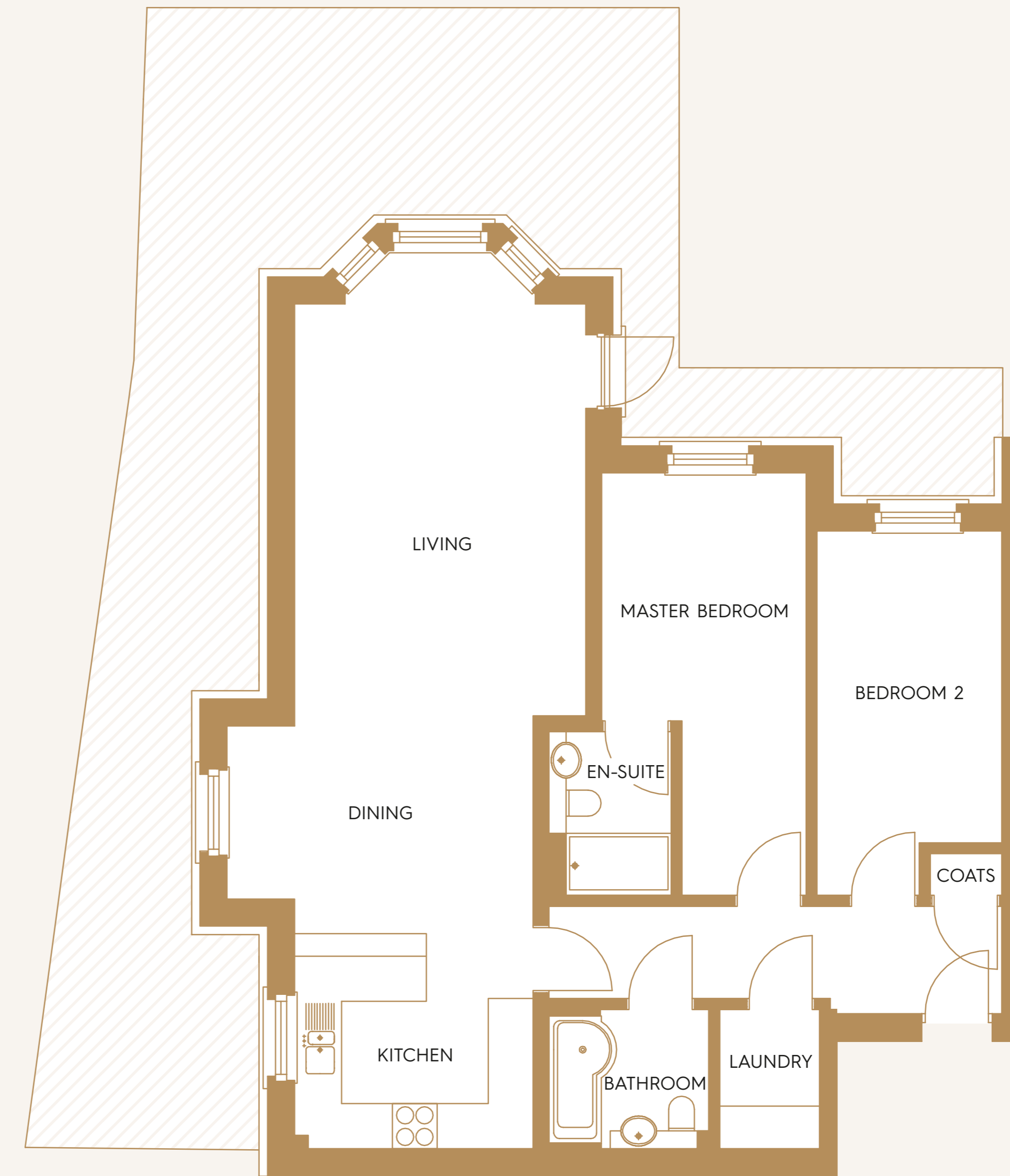
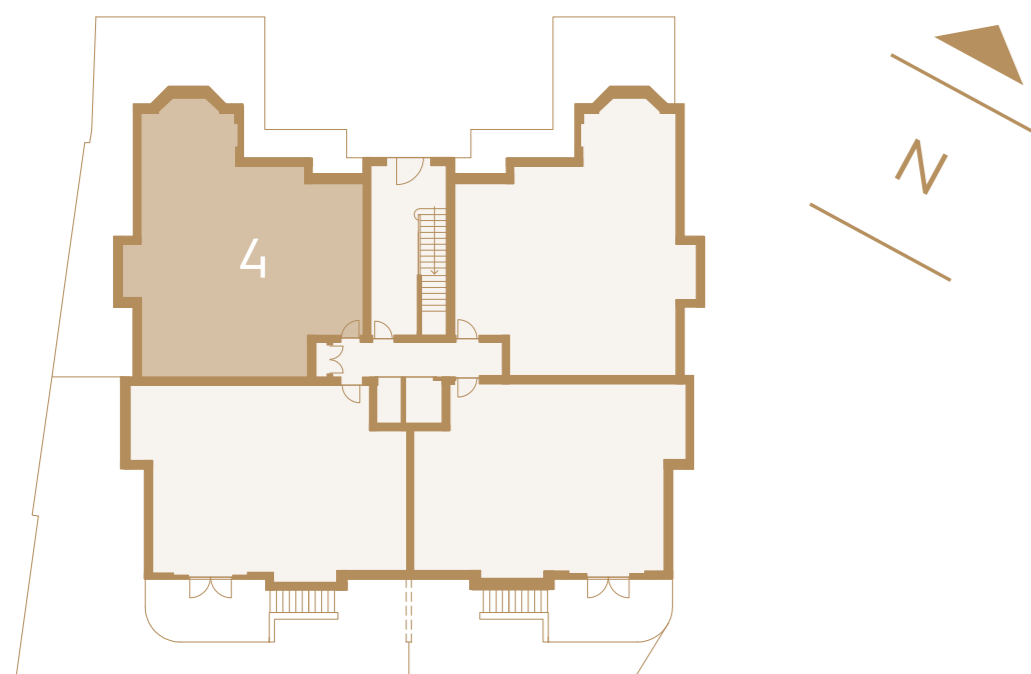
12m X 3.95m | 39'3" X 13'0"

MASTER BEDROOM

5.7m X 2.79m | 18'8" X 9'2"

BEDROOM 2

4.92m X 2.53m | 16'2" X 8'4"



FLOOR PLANS

APARTMENT 5

INTERNAL AREA

890 sqft

EXTERNAL AREA

80 sqft

LIVING/DINING/KITCHEN

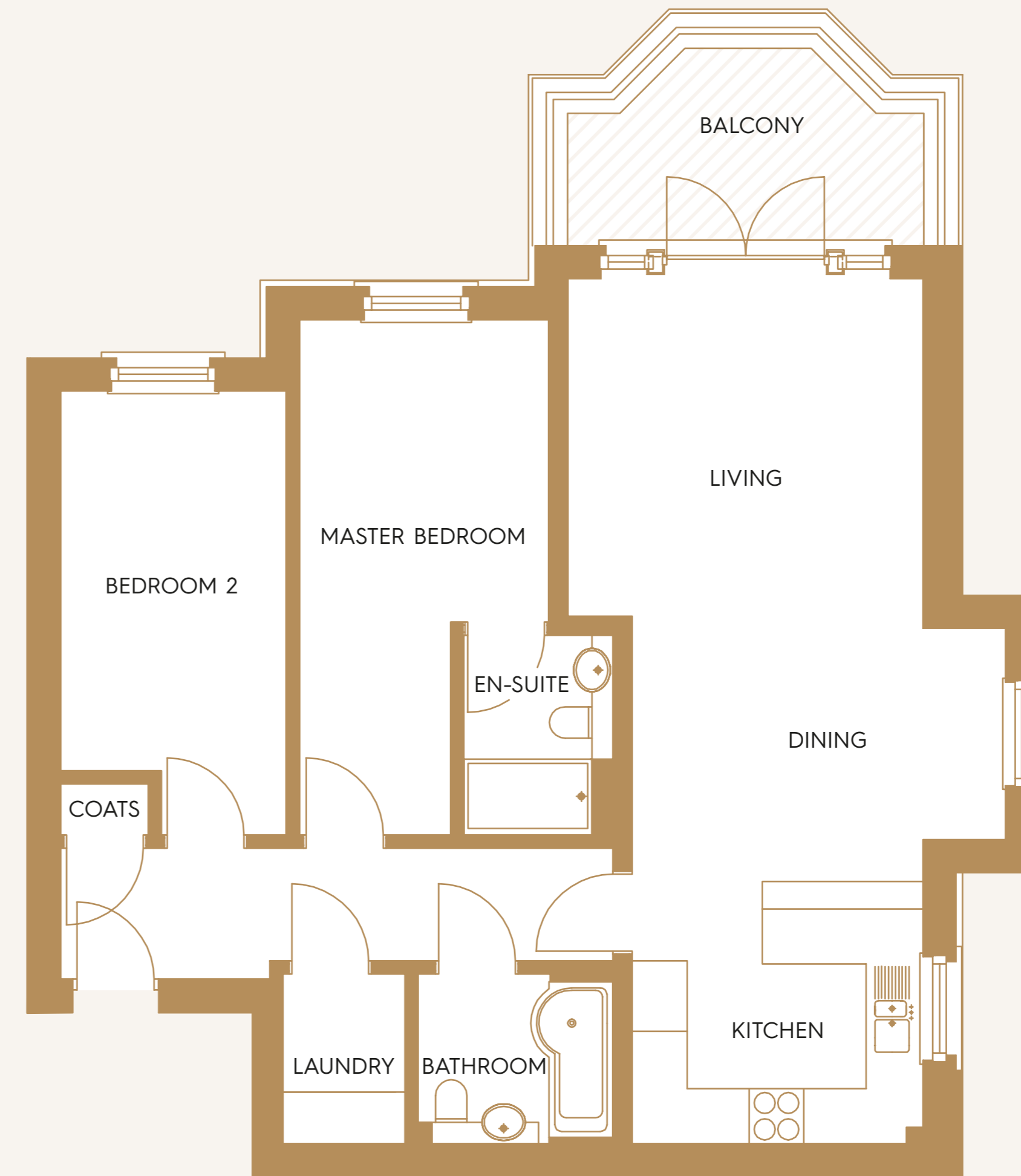
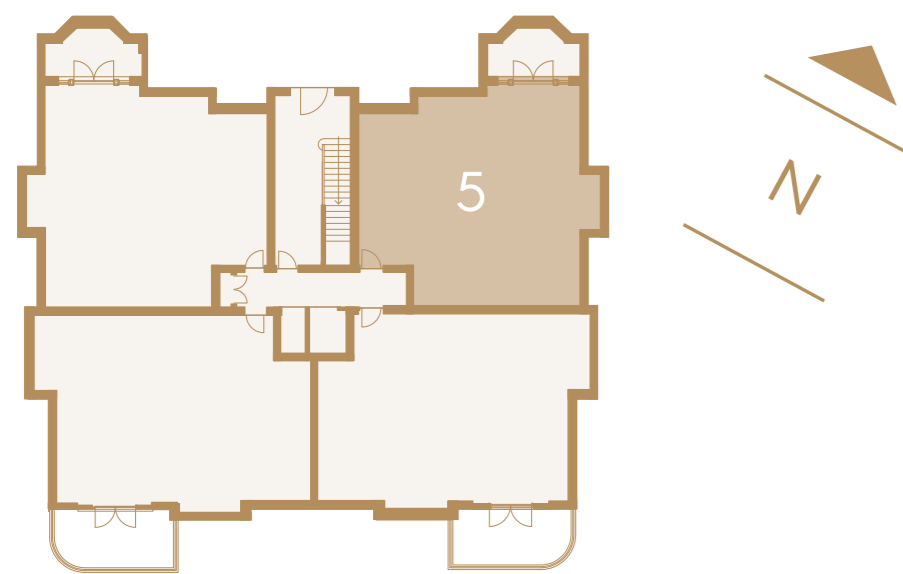
9.6m X 3.95m | 31'6" X 12'4"

MASTER BEDROOM

5.7m X 2.79m | 18'8" X 9'1"

BEDROOM 2

4.95m X 2.53m | 16'2" X 8'4"



20



FLOOR PLANS

APARTMENT 6

INTERNAL AREA

929 sqft

EXTERNAL AREA

130 sqft

LIVING/DINING/KITCHEN

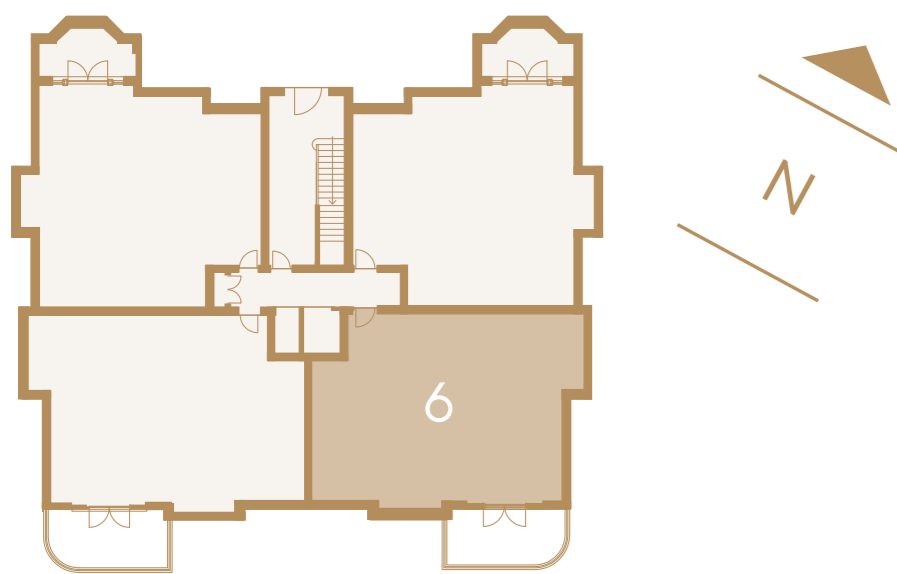
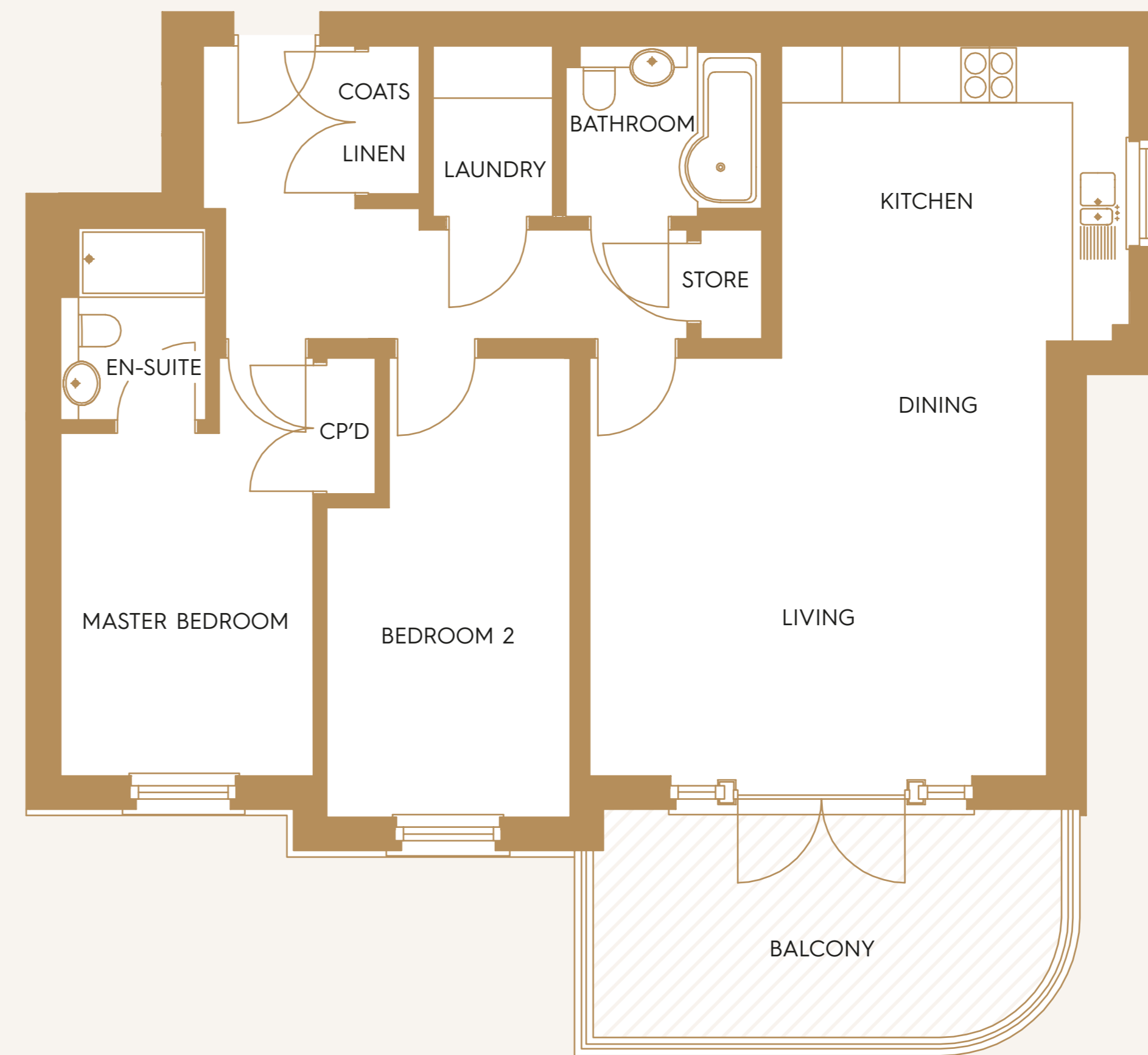
7.91m X 5m | 25'11" X 16'5"

MASTER BEDROOM

4.54m X 2.81m | 14'11" X 9'2"

BEDROOM 2

5.1m X 2.71m | 16'9" X 8'11"



21



FLOOR PLANS

APARTMENT 7

INTERNAL AREA

929 sqft

EXTERNAL AREA

130 sqft

LIVING/DINING/KITCHEN

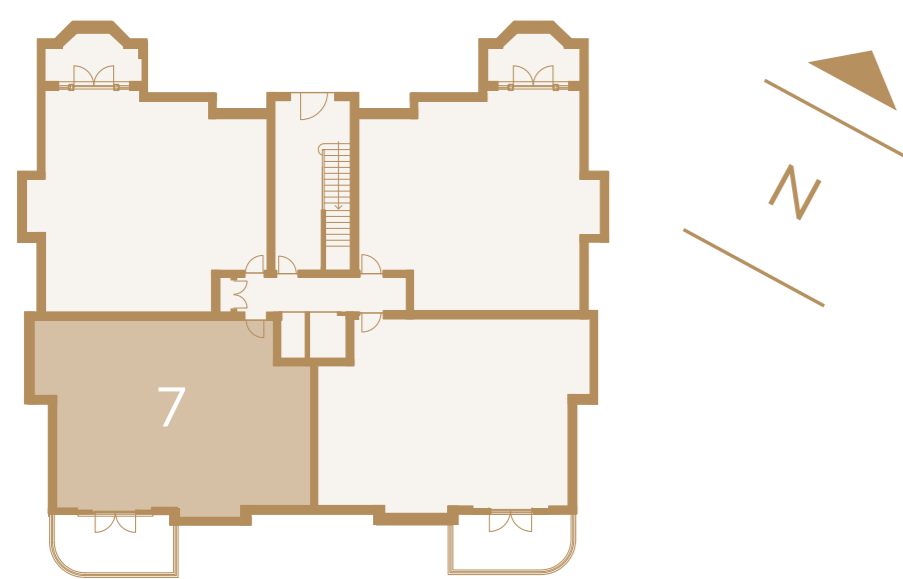
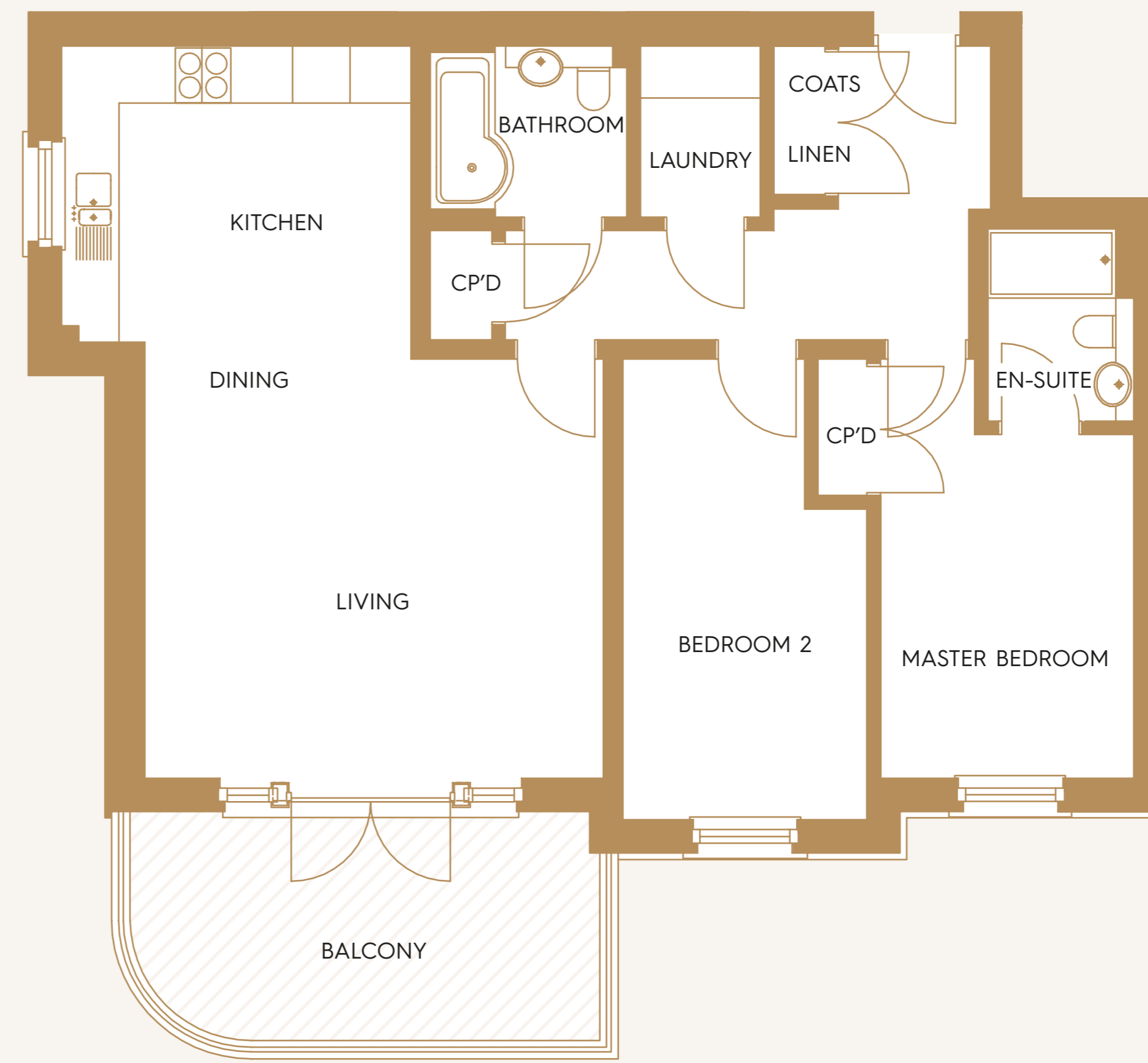
7.91m X 5m | 25'11" X 16'5"

MASTER BEDROOM

4.54m X 2.81m | 14'11" X 9'2"

BEDROOM 2

5.1m X 2.71m | 16'9" X 8'11"



FLOOR PLANS

APARTMENT 8

INTERNAL AREA

890 sqft

EXTERNAL AREA

80 sqft

LIVING/DINING/KITCHEN

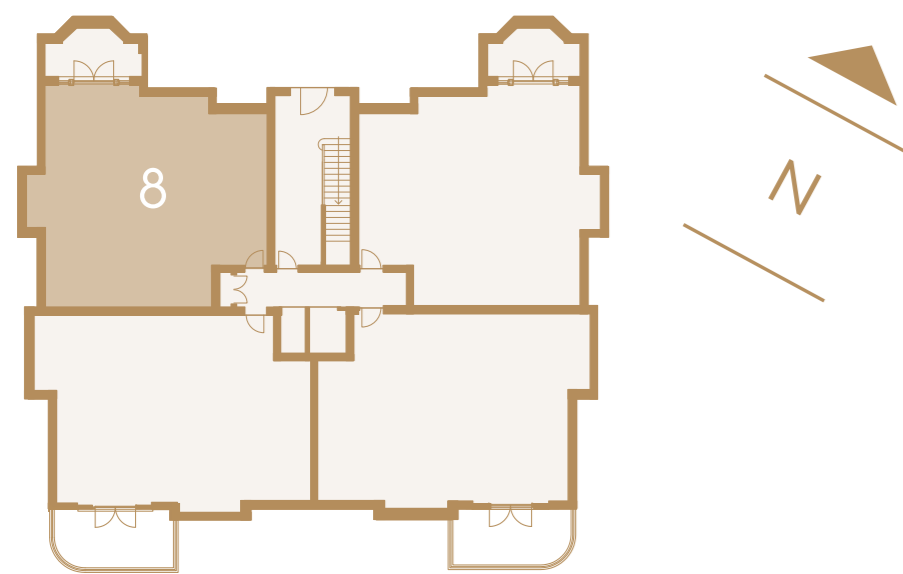
9.6m X 3.95m | 31'6" X 12'4"

MASTER BEDROOM

5.7m X 2.79m | 18'8" X 9'1"

BEDROOM 2

4.95m X 2.53m | 16'2" X 8'4"





FLOOR PLANS

APARTMENT 9

INTERNAL AREA

1,690 sqft

EXTERNAL AREA

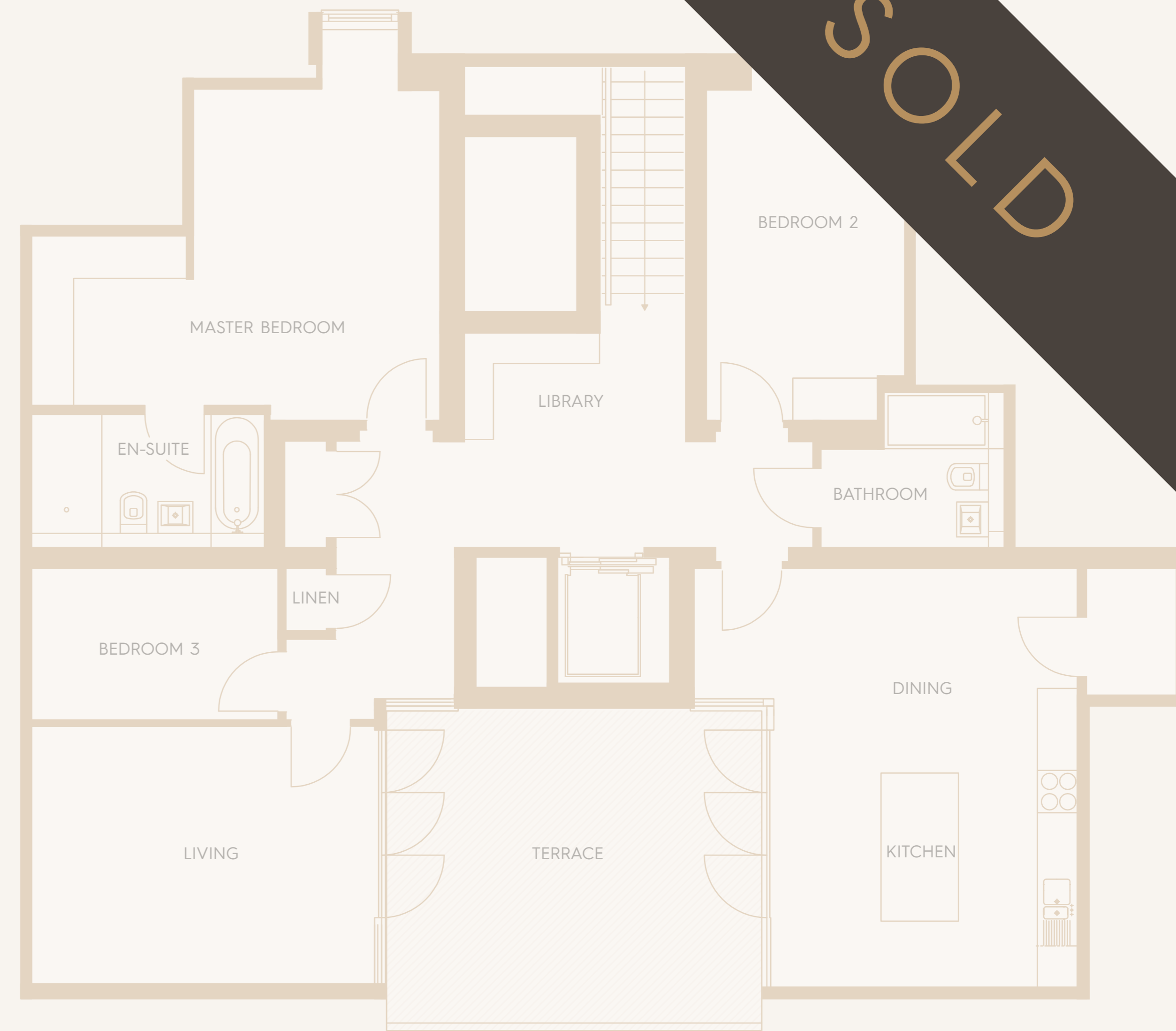
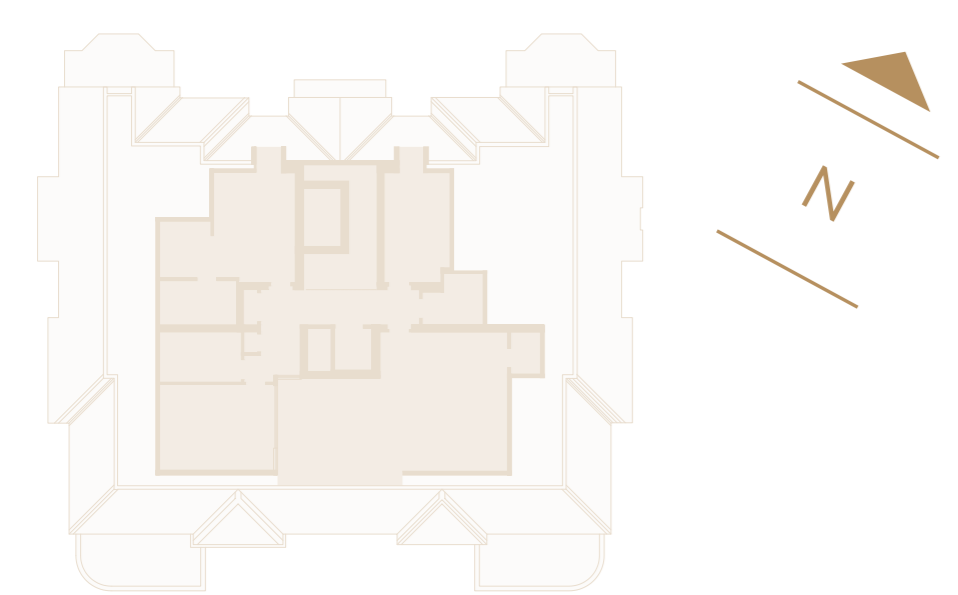
250 sqft

LIVING/DINING/KITCHEN

MASTER BEDROOM

BEDROOM 2

BEDROOM 3





SPECIFICATION

GENERAL

- Gated parking with electric charging points
- Private Garden or Balcony to all apartments
- Bespoke luxury Kone lift to all floors
- Interiors designed by Simpson & Voyle
- Traditional timber sash windows
- Resident's cycle storage
- Communal landscaped gardens
- 10 Year building warranty

KITCHENS

- Bespoke kitchens
- Composite stone worktops
- Miele Appliances to include: Induction Hob, Oven, Microwave, Extractor Chimney, Integrated Dishwasher, Washing Machine, Tumble Dryer, Integrated Fridge/Freezer (Siemens)
- Quooker hot water tap

BATHROOMS

- Hansgrohe taps & shower valves
- Italian porcelain tiles
- Chrome heated towel rails
- Bespoke feature lighting
- Duravit porcelain bathroom fittings

BEDROOMS

- Fitted wardrobes to all bedrooms
- 5amp lamp circuit

SECURITY

- Communal CCTV (accessible from smartphones)
- Video entry system with remote access via the VideoEntry App

User can take video-intercom calls, open the communal entrance door for deliveries and view the area outside the home in real time, from their smartphone anywhere in the world.

- Automated entrance gates

UTILITY / LAUNDRY ROOM

- Freestanding washing machine
- Freestanding tumble drier
- Composite stone worktops

HEATING / COOLING

- Vaillant boilers
- Under floor heating
- Full air conditioning to all principal rooms

*Specifications may change due to availability and are STC



FOR ALL SALE ENQUIRIES
0208 0590311
www.laneseexclusivehomes.co.uk

