

BLOCK A

FLOORPLAN

The graphic consists of a large orange rectangle with a black border. On the left side, the word "BLOCK" is written vertically in a bold, orange, sans-serif font. To its right, a large white letter "A" is centered within an orange square. Below these elements, a horizontal orange bar contains the text "MERIDIAN ONE" in a bold, black, sans-serif font. The letter "O" in "ONE" is replaced by a white location pin icon.

BROCHURE

APARTMENTS



# WELCOME TO THE FUTURE OF LONDON LIVING

MERIDIAN ONE

INTRODUCTION

Exploring what really makes somewhere home, Meridian One offers a new vision for life in London. The first phase in Meridian Water, a £6bn transformation of this corner of London, led by Enfield Council, it looks beyond each apartment's superbly designed four walls to create a true destination.

Somewhere that offers comfort, community and convenience in equal measure. A place that balances modern life with the natural world. A new neighbourhood that really feels like home.



MERIDIAN ONE

BLOCK A



COMPUTER GENERATED IMAGE



# COME IN & PUT YOUR FEET UP

MERIDIAN ONE



Designed to be as welcoming as they are stylish, the apartments offer a carefully curated palette of finishes that are perfectly in tune with modern life.

SPECIFICATION

MERIDIAN ONE

## KITCHENS

- Contemporary handle-less kitchen in either white gloss (studios & 1 beds) or pearl grey gloss (2 beds)
- Feature lighting under wall units
- Silestone worktop with matching upstands & hob splashback
- Undermounted contemporary stainless-steel sink & chrome mixer tap
- Bosch brushed steel single oven
- Bosch ceramic frameless hob
- Bosch integrated extractor hood
- Bosch integrated fridge freezer
- Bosch integrated dishwasher

## BATHROOMS & ENSUITES

- Large format Porcelanosa wall tiles with brushed aluminium edging detail (full height to bath & shower areas)
- Large format Porcelanosa floor tiles
- Contemporary sanitary ware, brassware & soft close WC
- Tiled bath panel in matching Porcelanosa tiles
- Hinged glass bath screen
- Rain showerhead to ensembles
- Chrome thermostatic mixers
- Single lever chrome mixer tap to basin
- Mirrored vanity unit
- Hinged glass shower screens
- Chrome towel radiator
- White gloss vanity worktop

## GENERAL FEATURES

- Bosch washer dryer in storage cupboard
- Soft oak wood effect flooring to halls, living areas & kitchens
- Neutral carpet to bedrooms
- White matt paint finish to all walls & ceilings
- Satin white finish square edge architraves, doorframes & skirting
- Satin white finish internal doors with satin & polished door handles

## FIXTURES & FITTINGS

- LED downlights to all living & wet areas with pendants to bedrooms
- Built-in wardrobes with soft closing sliding doors in a mirror finish to bedroom 1
- Sky Q, TV & telephone outlets to living room, with TV outlets to bedroom 1
- Home office point (where applicable)

## HEATING

- Underfloor heating to all areas
- Hot water supplied by central heating plant via heat interface unit (HIU)

## OUTSIDE SPACE

- Exterior light
- Tiles to outside spaces

## COMMUNAL SPACES

- 12-hour concierge service
- Bicycle storage in undercroft parking area
- Limited car parking available by separate negotiation

## SECURITY & PEACE OF MIND

- Video entry phone without handset (touch sensitive display)
- Lava Grey Fleetwood laminate real wood effect front door
- Mains powered smoke/heat detectors with battery back-up
- NHBC Guarantee

*The specifications of all our homes is correct at the date of going to press but may be subject to change as necessary and without notice. Please ask your Sales Executive for more information.*

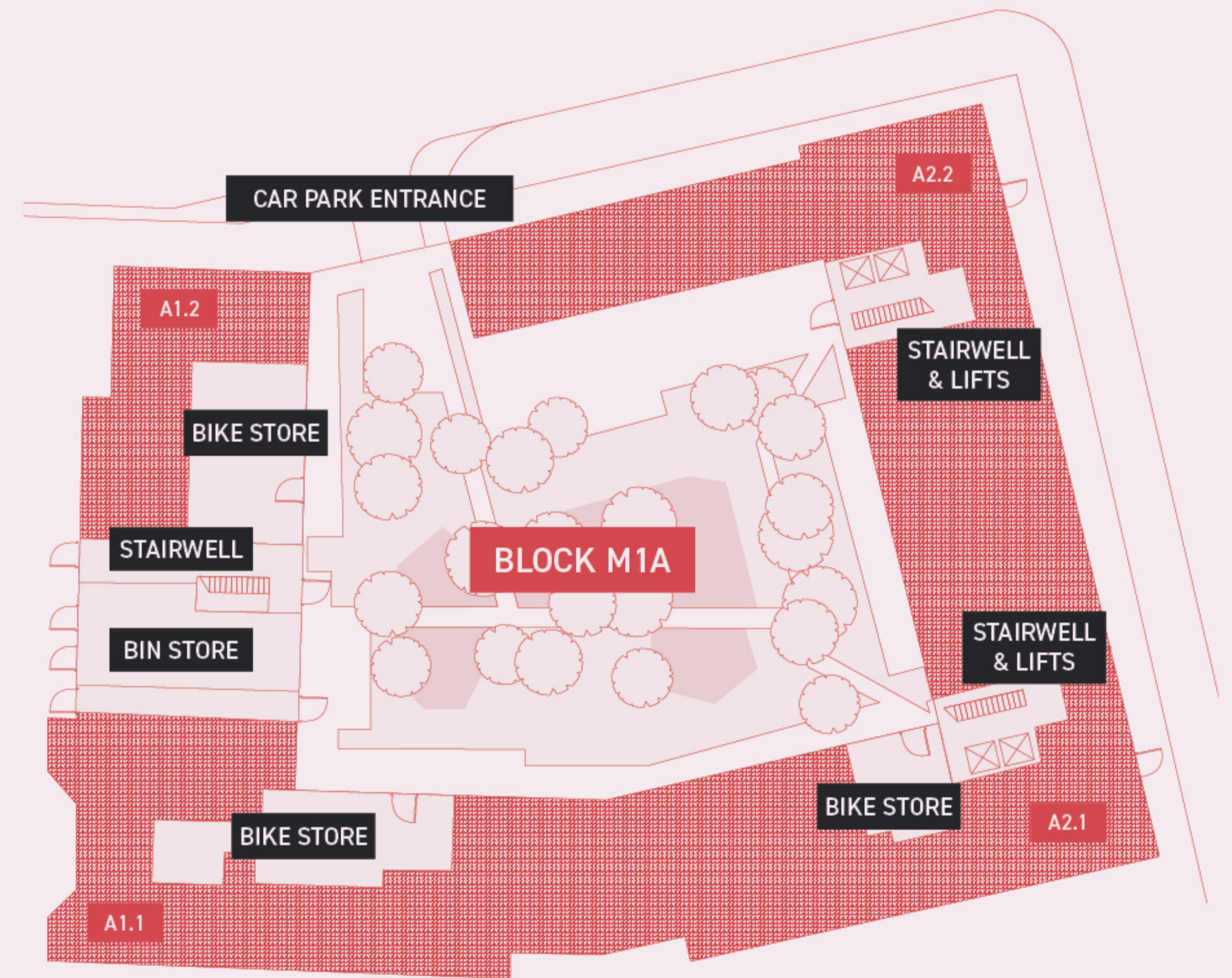
SPECIFICATION



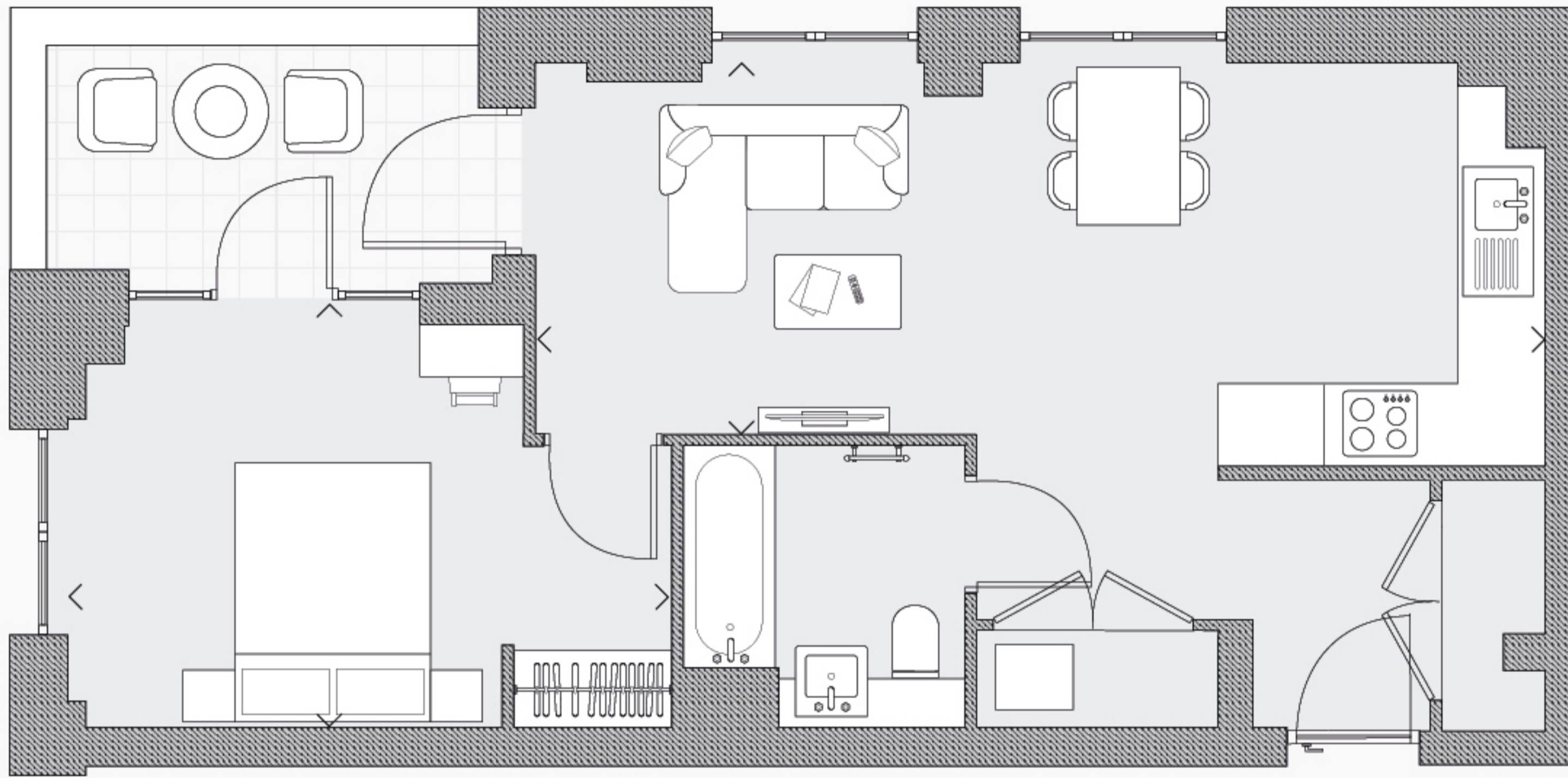


The first block to come to market, M1A is ideally located at the end of Station Square, ensuring you're always welcomed home in style. Set around a relaxing internal courtyard garden, with a concierge and ample cycle storage in the underground carpark, no detail has been overlooked in creating somewhere you'll want to call home.

# HOME IS WAITING FOR YOU



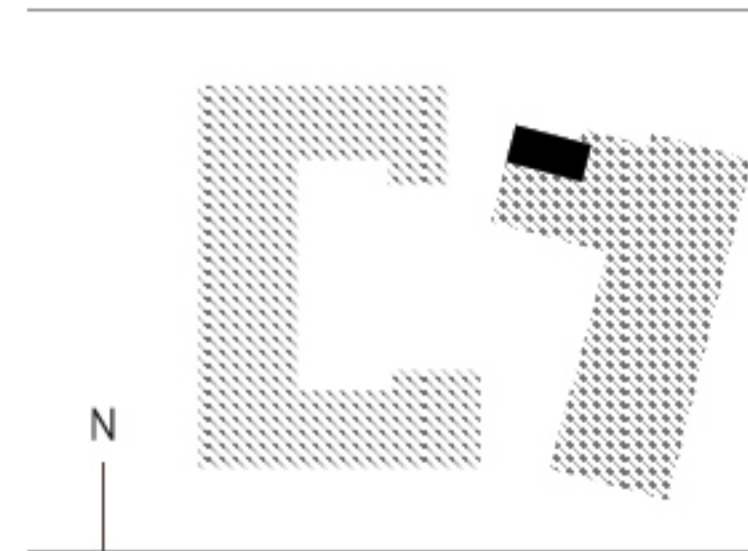




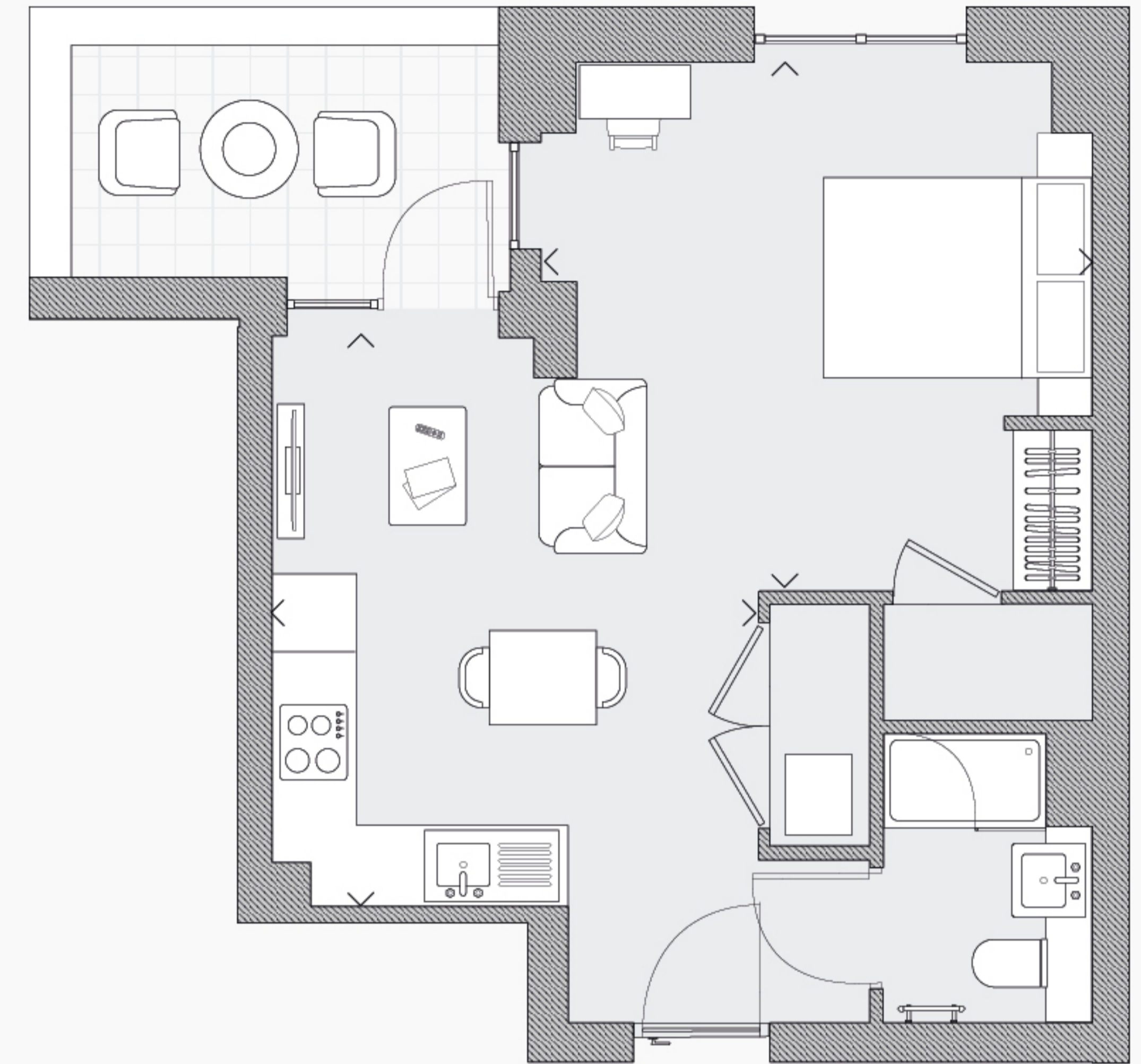
# APARTMENT 801/901/1001/1101

One Bedroom

Kitchen/ Living / Dining	7.7 x 2.8 m	25.4 x 9.3 ft
Bedroom One	4.6 x 3.1 m	15.2 x 10.1 ft
<b>TIA</b>	<b>50.4 sqm</b>	<b>542.5 sqft</b>
<b>External Area</b>	<b>6.5 sqm</b>	<b>69.7 sqft</b>



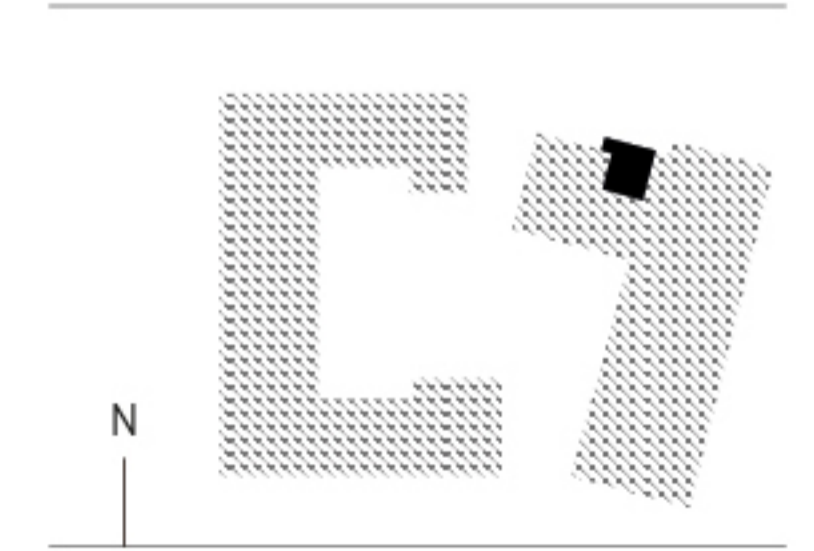
**Disclaimer**  
Please note, floor plans and dimensions are taken from architectural drawings and are for guidance only. Dimensions stated are within a tolerance of plus or minus 350mm. Overall dimensions are usually stated and there may be projections into these.



# APARTMENT 802/902/1002/1102

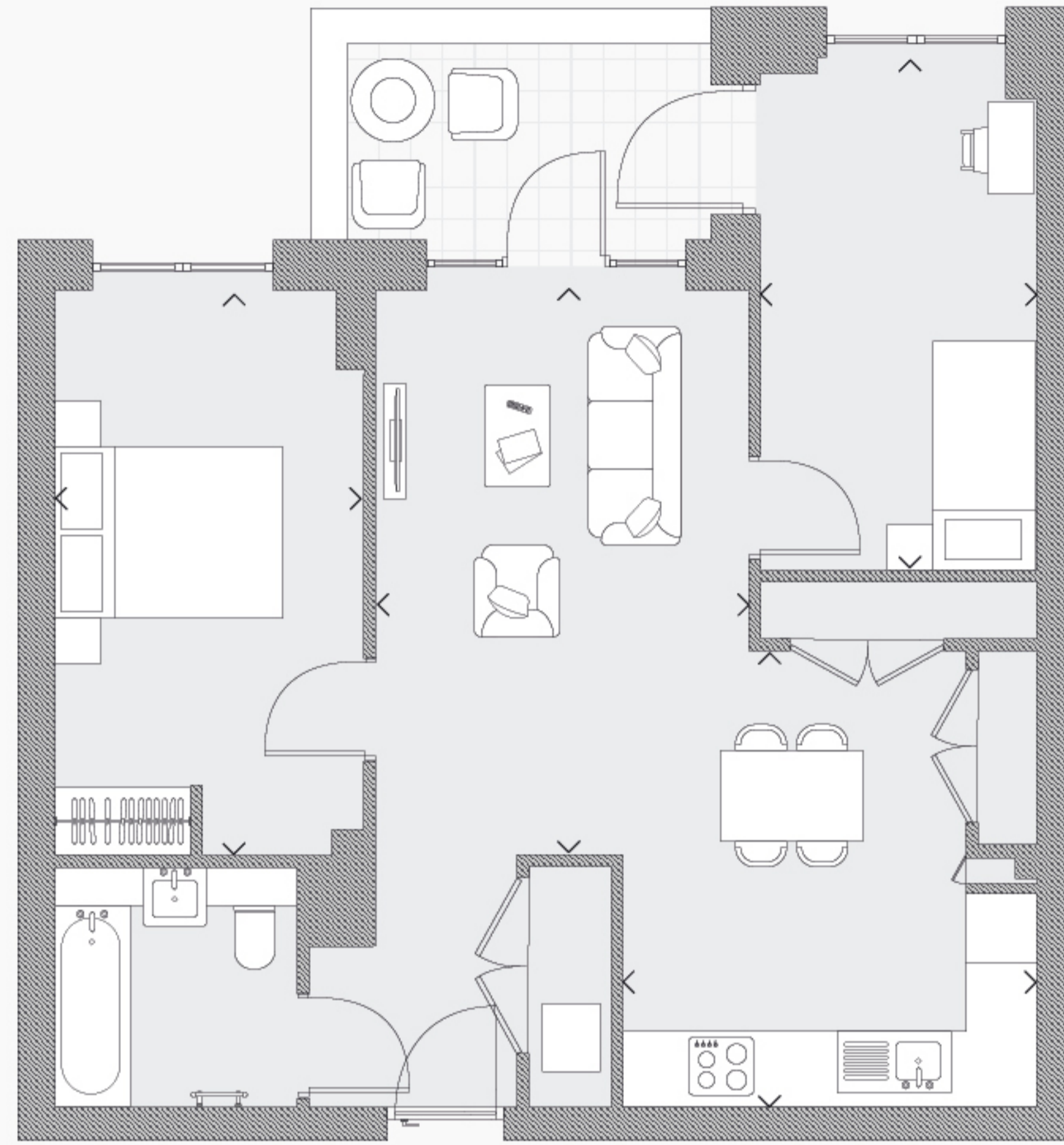
Studio

Kitchen/ Living / Dining	3.6 x 4.2 m	11.8 x 13.9 ft
Bedroom One	3.8 x 3.9 m	12.6 ft x 12.8 ft
<b>TIA</b>	<b>37.2 sqm</b>	<b>400.4 sqft</b>
<b>External Area</b>	<b>6.0 sqm</b>	<b>64.5 sqft</b>



**Disclaimer**  
Please note, floor plans and dimensions are taken from architectural drawings and are for guidance only. Dimensions stated are within a tolerance of plus or minus 350mm. Overall dimensions are usually stated and there may be projections into these.

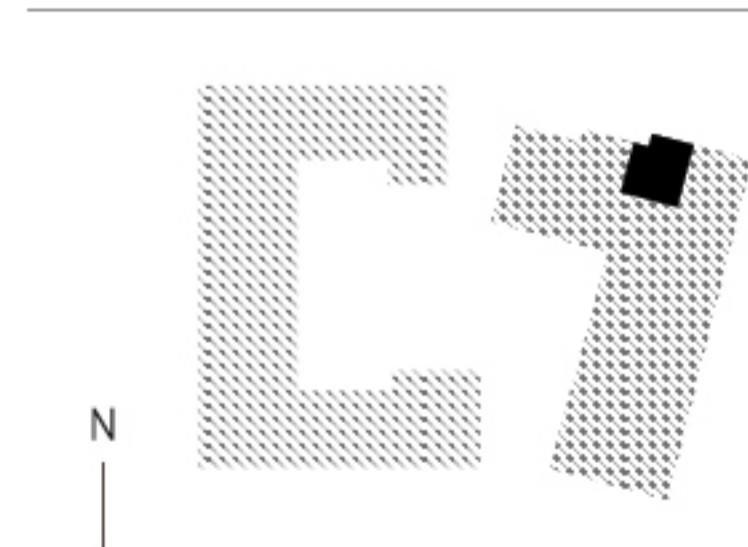




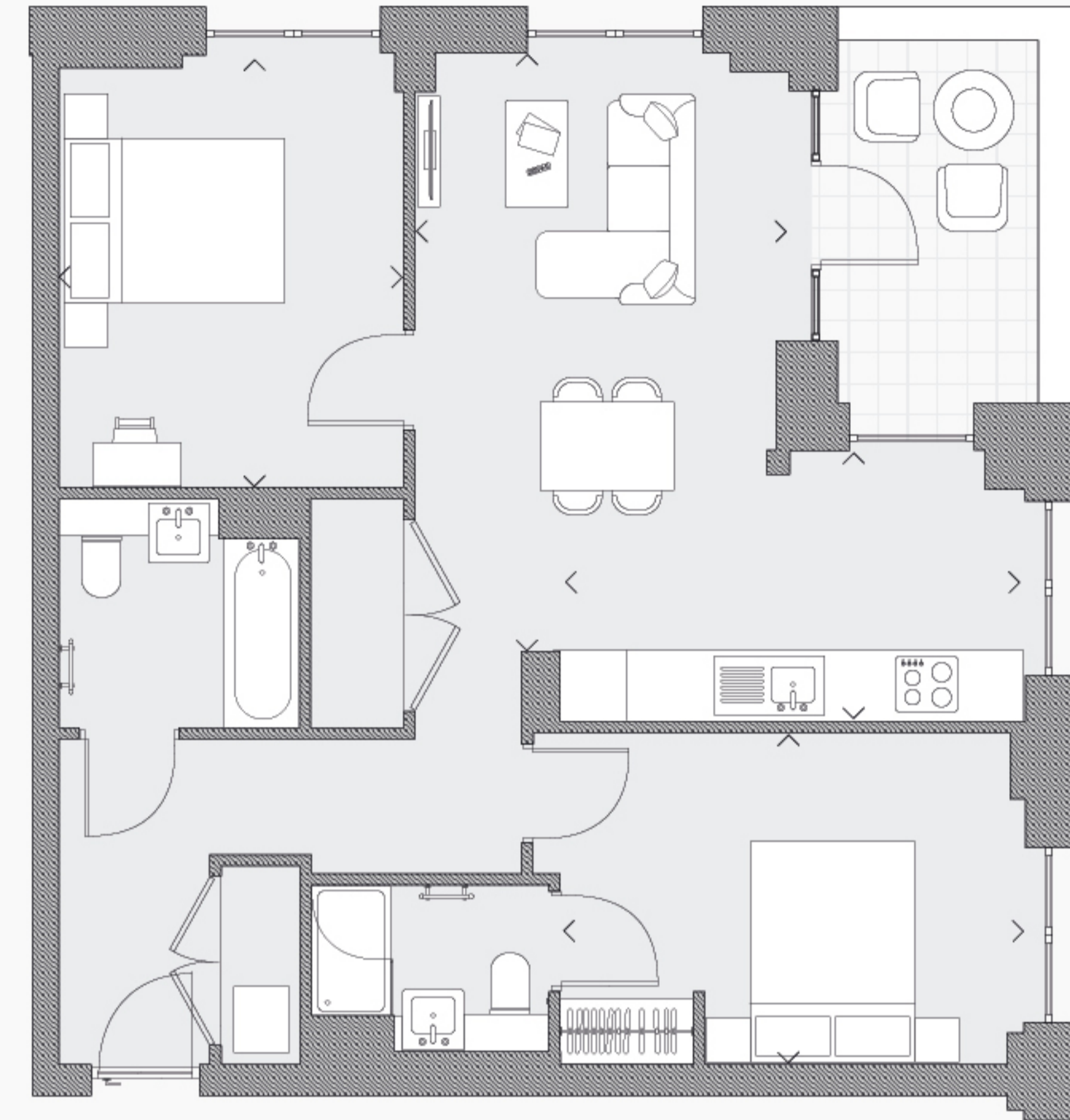
## APARTMENT 803/903/1003/1103

Two Bedroom

Kitchen / Dining	3.7 x 4.0 m	12.0 x 13.0 ft
Living	3.3 x 4.9 m	10.9 ft x 16.2 ft
Bedroom One	2.7 x 5.0 m	8.8 x 16.3 ft
Bedroom Two	2.4 x 4.5 m	8.0 x 14.7 ft
<b>TIA</b>	<b>66.7 sqm</b>	<b>717.5 sqft</b>
<b>External Area</b>	<b>6.4 sqm</b>	<b>68.9 sqft</b>



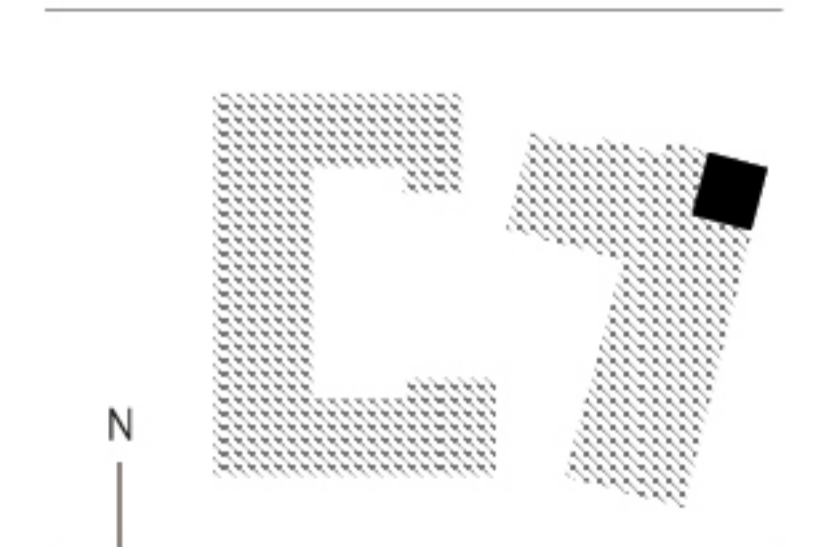
**Disclaimer**  
Please note, floor plans and dimensions are taken from architectural drawings and are for guidance only. Dimensions stated are within a tolerance of plus or minus 350mm. Overall dimensions are usually stated and there may be projections into these.



## APARTMENT 804/904/1004/1104

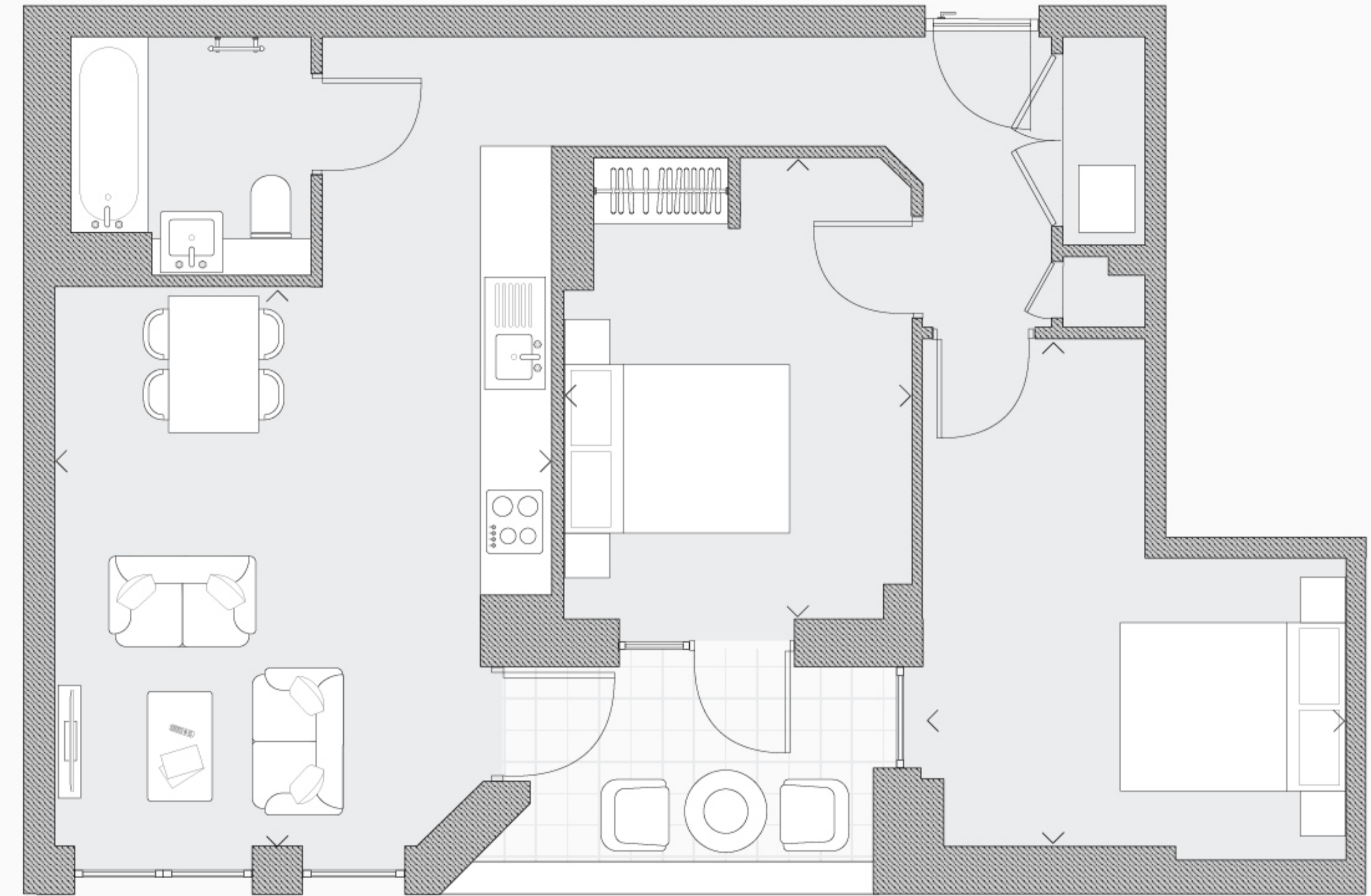
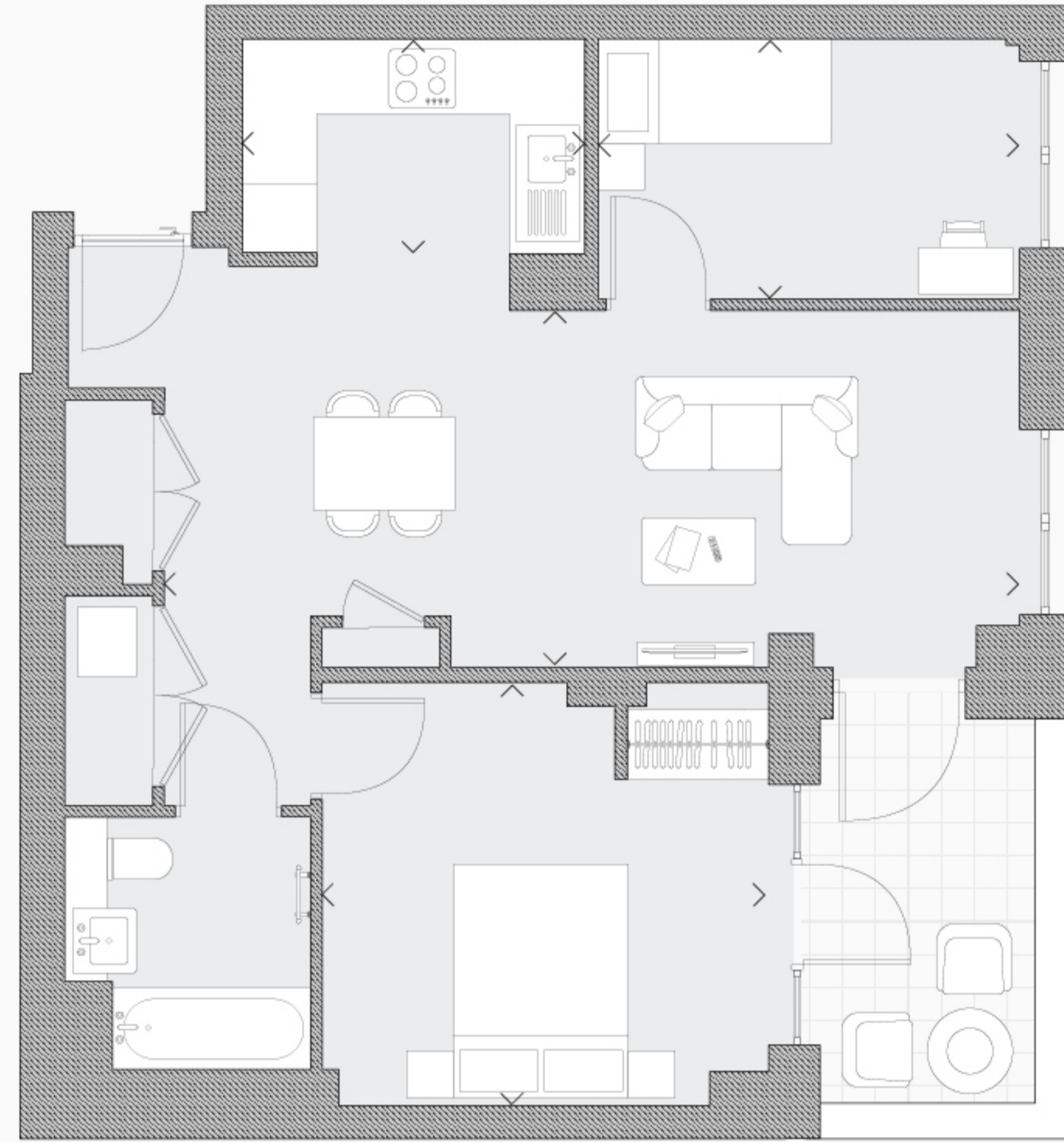
Two Bedroom

Kitchen	4.2 x 2.5 m	13.8 X 8.0 ft
Living / Dining	3.4 x 5.4 m	11.1 x 17.7 ft
Bedroom One	4.2 x 3.0 m	13.8 x 9.9 ft
Bedroom Two	3.1 x 3.9 m	10.2 x 12.9 ft
<b>TIA</b>	<b>72.0 sqm</b>	<b>775.0 sqft</b>
<b>External Area</b>	<b>7.0 sqm</b>	<b>75.0 sqft</b>



**Disclaimer**  
Please note, floor plans and dimensions are taken from architectural drawings and are for guidance only. Dimensions stated are within a tolerance of plus or minus 350mm. Overall dimensions are usually stated and there may be projections into these.

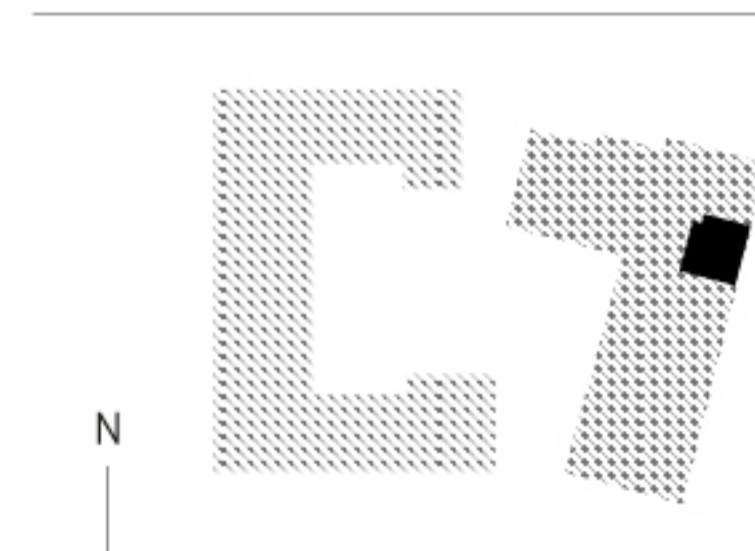




## APARTMENT 805/905/1005/1105

Two Bedroom

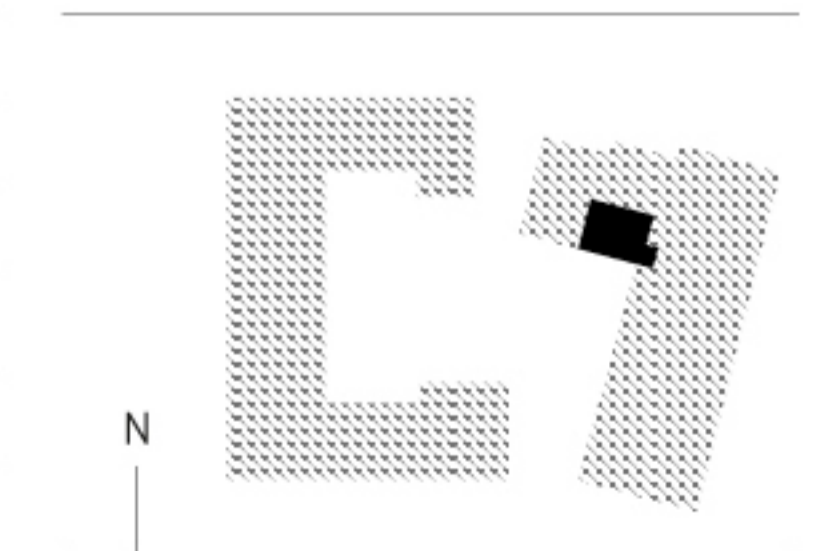
Kitchen	3.0 x 1.9 m	9.7 x 6.1 ft
Living / Dining	7.3 x 3.1 m	24.0 x 10.1 ft
Bedroom One	3.8 x 3.6 m	12.6 x 11.8 ft
Bedroom Two	3.6 x 2.3 m	11.8 x 7.5 ft
<b>TIA</b>	<b>63.7 sqm</b>	<b>685.7 sqft</b>
<b>External Area</b>	<b>6.7 sqm</b>	<b>71.9 sqft</b>



## APARTMENT 806/906/1006/1106

Two Bedroom

Kitchen/ Living / Dining	4.4 x 5.0 m	14.4 x 16.3 ft
Bedroom One	2.8 x 4.1 m	9.0 x 13.5 ft
Bedroom Two	3.8 x 4.5 m	12.3 x 14.9 ft
<b>TIA</b>	<b>65.7 sqm</b>	<b>707.5 sqft</b>
<b>External Area</b>	<b>6.0 sqm</b>	<b>64.0 sqft</b>



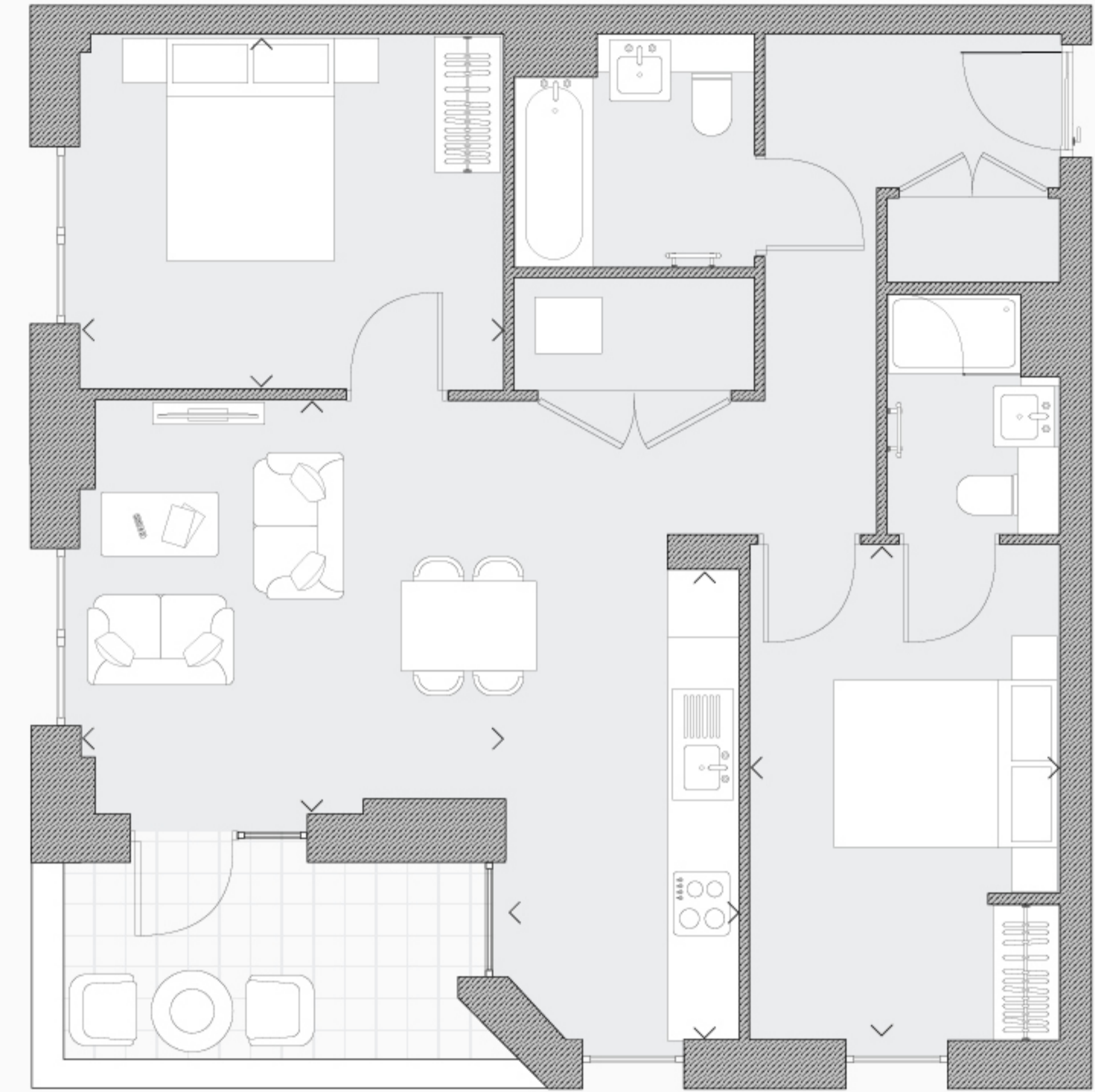
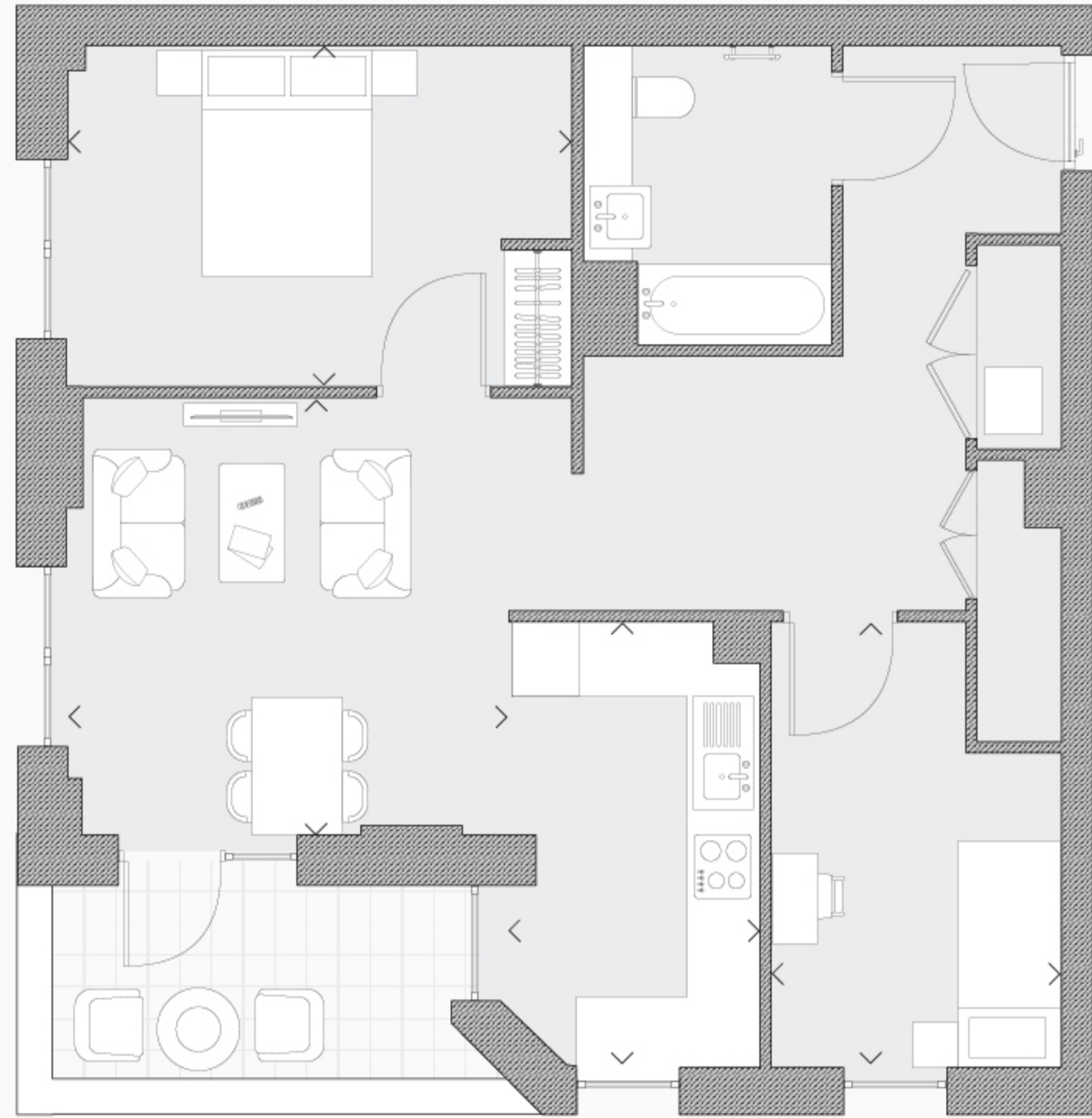
**Disclaimer**

Please note, floor plans and dimensions are taken from architectural drawings and are for guidance only. Dimensions stated are within a tolerance of plus or minus 350mm. Overall dimensions are usually stated and there may be projections into these.

**Disclaimer**

Please note, floor plans and dimensions are taken from architectural drawings and are for guidance only. Dimensions stated are within a tolerance of plus or minus 350mm. Overall dimensions are usually stated and there may be projections into these.

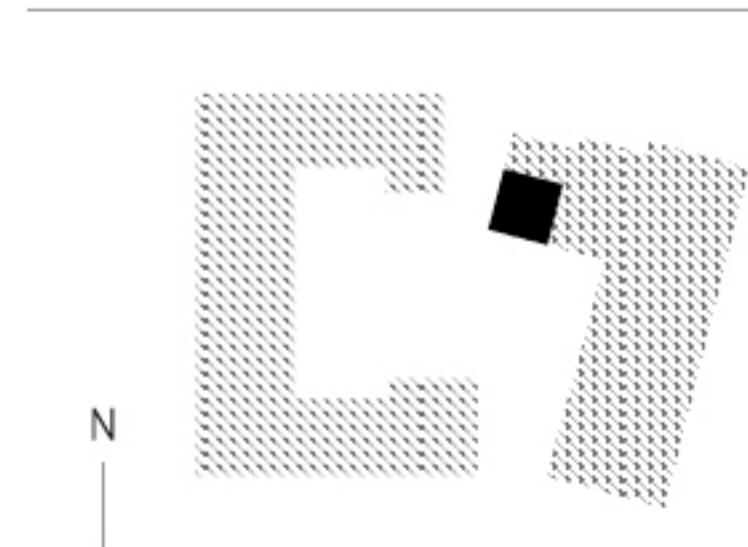




# APARTMENT 807/907

Two Bedroom

Kitchen	2.1 x 4.2 m	6.9 x 13.8 ft
Living / Dining	3.9 X 3.7 m	12.9 x 12.2 ft
Bedroom One	4.5 x 3.1 m	14.6 x 10.2 ft
Bedroom Two	2.5 x 3.9 m	8.3 x 12.8 ft
<b>TIA</b>	<b>70.6 sqm</b>	<b>759.9 sqft</b>
<b>External Area</b>	<b>6.9 sqm</b>	<b>73.9 sqft</b>

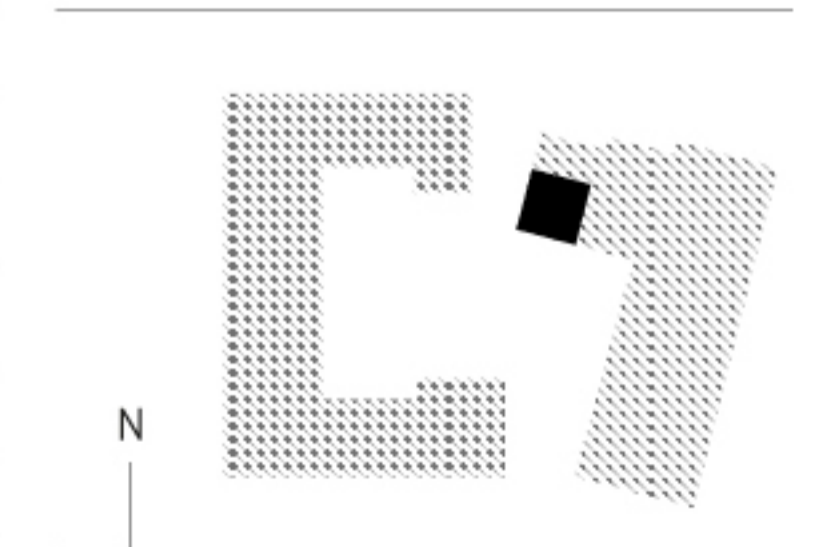


**Disclaimer**  
Please note, floor plans and dimensions are taken from architectural drawings and are for guidance only. Dimensions stated are within a tolerance of plus or minus 350mm. Overall dimensions are usually stated and there may be projections into these.

# APARTMENT 1007/1107

Two Bedroom

Kitchen	2.1 x 4.2 m	6.9 x 13.8 ft
Living / Dining	5.9 x 3.7 m	19.4 x 12.1 ft
Bedroom One	2.8 x 4.4 m	9.0 x 14.5 ft
Bedroom Two	3.8 x 3.2 m	12.4 x 10.4 ft
<b>TIA</b>	<b>70.6 sqm</b>	<b>759.9 sqft</b>
<b>External Area</b>	<b>6.9 sqm</b>	<b>74.3 sqft</b>



**Disclaimer**  
Please note, floor plans and dimensions are taken from architectural drawings and are for guidance only. Dimensions stated are within a tolerance of plus or minus 350mm. Overall dimensions are usually stated and there may be projections into these.



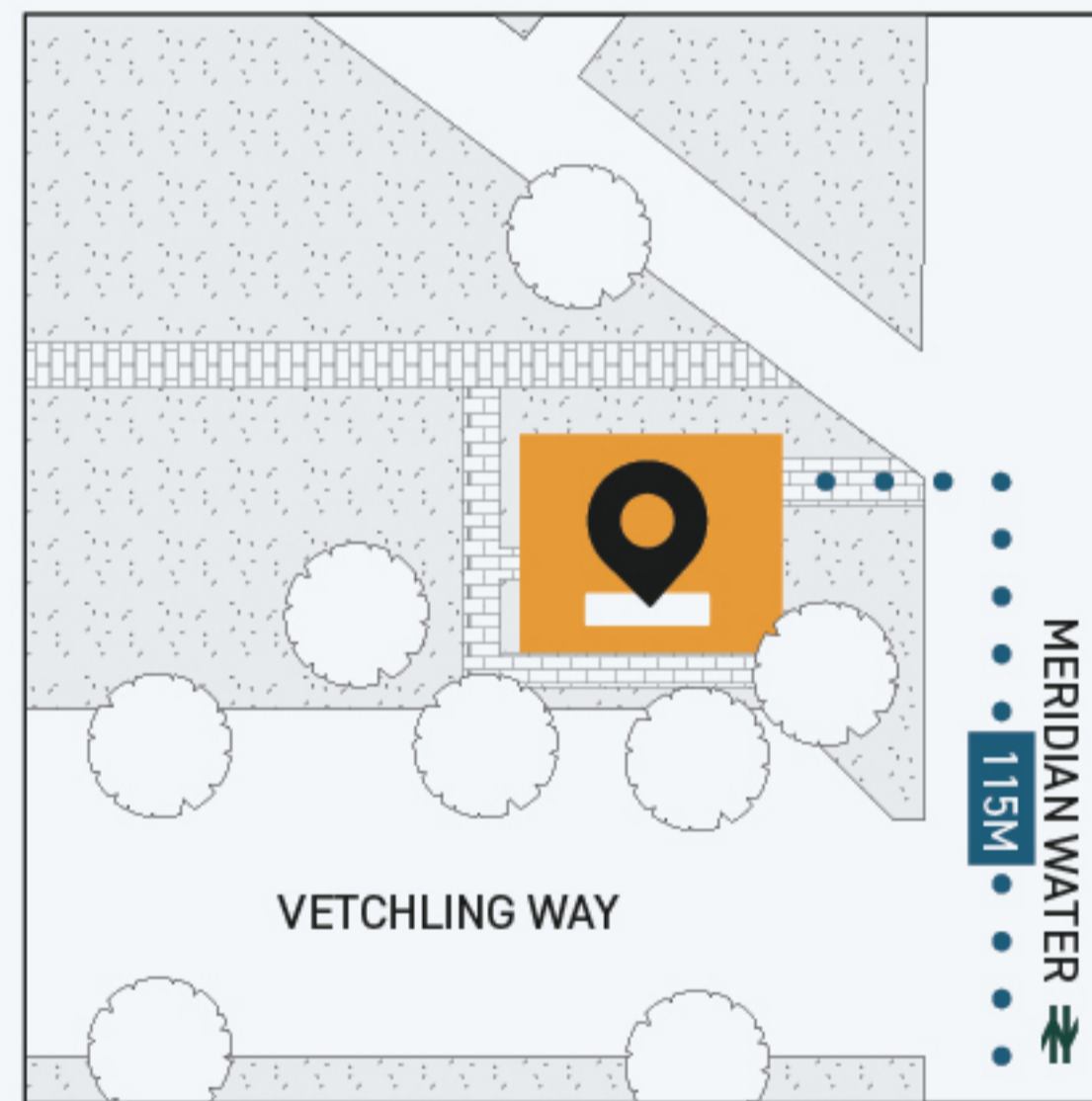
# FIND OUT MORE

sales@meridian-one.com

meridian-one.com

020 4571 3639

Visit our Sales & Information Centre  
what3words: desks.zooms.desks



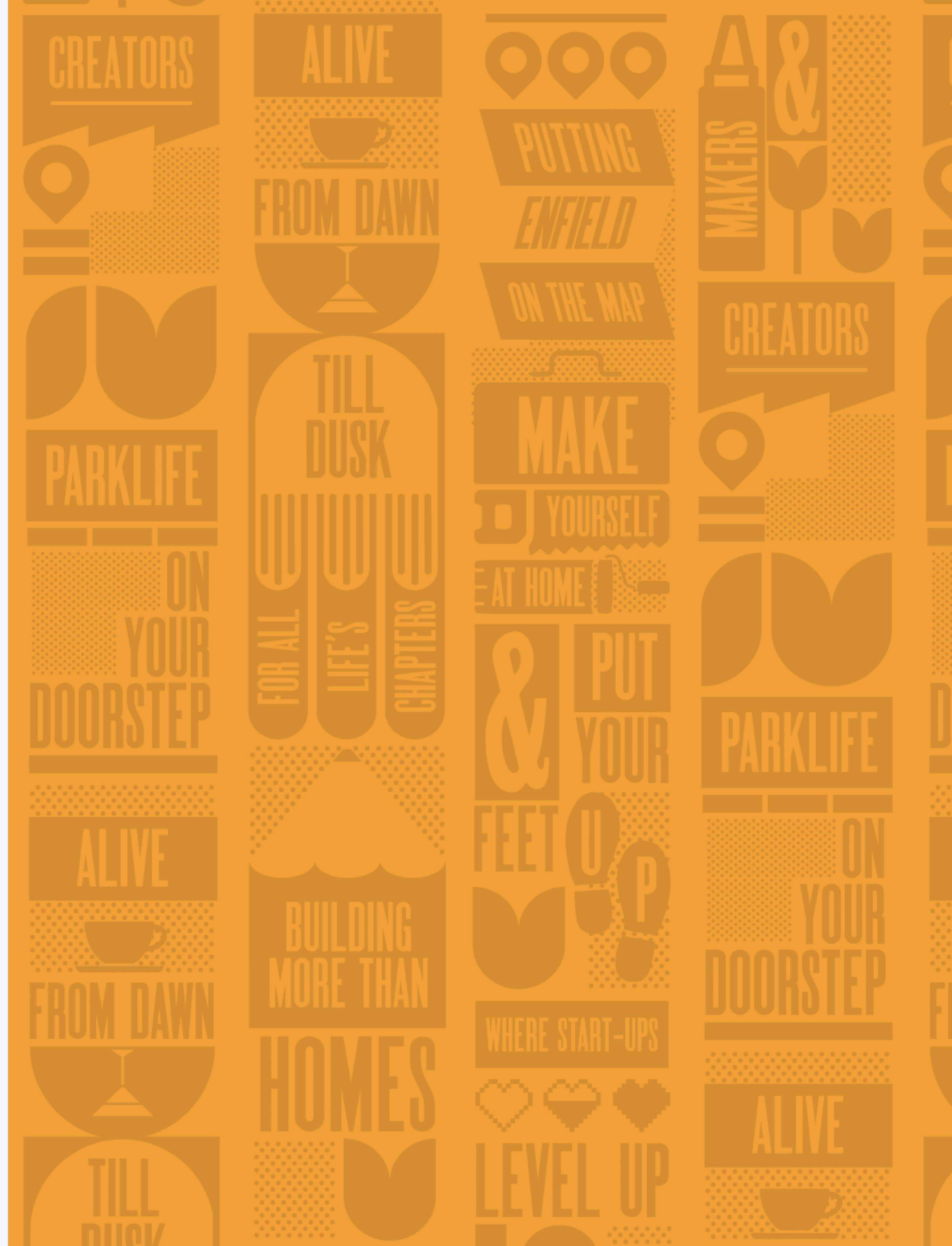
MERIDIAN ONE

CONTACT



Please note, floor plans and dimensions are taken from architectural drawings and are for guidance only. Dimensions stated are within a tolerance of plus or minus 350mm. Overall dimensions are usually stated and there may be projections into these. With our continual improvement policy we constantly review our designs and specification to ensure we deliver the best product to our customers. Computer Generated Images not to scale. Interiors are from a previous development and indicative only, additional lighting, furniture and decorative treatments not included in the standard specification. Finishes and materials may vary and landscaping is illustrative only. Kitchen layouts are indicative only and may change. To confirm specific details on our homes please ask your Sales Executive. Issued Sept '22.

Brand & Design by One Big Company







[meridian-one.com](http://meridian-one.com)

