



Flora
GARDENS

HARLOW CM20 1QR

A development by

PRISMA

PROPERTY
DEVELOPMENTS

Prisma Property Developments is part of a family run development company building new homes for Londoners in and around the M25. Since its inception in 2009 the group has delivered over 150 new homes across 20 sites with another 300 in the pipeline. We are passionate about delivering good design to first time buyers and downsizers alike by building affordable, long-lasting homes.

Flora

GARDENS

A development of 122 new apartments with skyline views, moments from Harlow Town Centre.

Flora Gardens is less than 1 mile walking distance from Harlow Train Station which has excellent access to Central London as well as high street shops, restaurants and outdoor leisure.



In the heart of

Harlow

Flora Gardens is in the perfect location for those who want easy access to Central London as well as the countryside and close proximity to shops and restaurants for their everyday needs.

Just a few minutes away is Harlow's established Harvey Centre and Water Gardens, with a million square feet of shopping space and landscaped gardens. The town also offers plenty of beautiful routes into the countryside and nearby villages, blending the best of town and country living.





Harlow Town

Established in 1947 as an aspirational New Town by masterplanner Sir Frederick Gibberd, Harlow was built with a focus on the arts, culture and easy access to leisure facilities to provide its residents with a healthy balance of town and country living.

It is said to be one of the greenest places to live in Essex, with over a third of the town as designated parkland. One of its most iconic features is the permanent exhibition of almost 100 sculptures dotted around the town centre by the likes of Henry Moore, August Rodin and Barbara Hepworth.

The nearby Harvey Centre and Water Gardens will cater to all your everyday shopping needs and food cravings with plenty of high street names and almost 20 places to eat all under one roof.

You can also enjoy a leisurely stroll through The Gibberd Gallery and admire works of local artists or see what's on at one of the two local theatres or cinemas.

Restaurants within a 10 minute walk from your new home:

FIVE GUYS

Some say some of the best American style burgers and hot dogs... and don't forget the milkshakes!

NANDO'S

No one needs an introduction to the world famous peri peri chicken and fries.

PIZZA EXPRESS

National favourite pizzas and pastas in an atmospheric setting.

MUI KOKO NOODLE BAR

A bright and lively Asian diner serving excellent noodle dishes.

LOCAL AREA

EVERYDAY

- Sainsbury's Superstore 1
- Harlow Town Pharmacy 2
- Harlow Dental Surgery 3
- Addison House Surgery 4
- Edinburgh Way Retail Park 5

SHOPPING

- H&M 1
- Next 2
- Topshop 3
- TK Maxx 4
- River Island 5

ENTERTAINMENT

- Cineworld Harlow
- Harlow Bowl 1
- Harlow Playhouse 2
- Harlow Town Park 3
- Gibberd Gallery 4
- 5

SPORTS

- Harlow Town Football Club 1
- Harlow Leisure Zone 2
- Ripped Gym 3
- Canonsbrook Golf Club 4





View looking East from 10th Floor



HARLOW TOWN PARK

Grade II listed and designed by Dame Sylvia Crowe, Harlow Town Park covers 160 acres and offers many attractions.

SCULPTURE TOWN

The Boar (1970) by Elisabeth Frink is one of the many contemporary sculptures to be admired at the Water Gardens.

GRADE I LISTED HARLOW

St. Mary-at-Latton church is the oldest building Harlow dating back to 1067.

STORT RIVER LOCK

Enjoy country walks along the River Stort - just a 5 minute drive or 25 minute walk away.



BY ROAD

Approximate distances as shown by Google Maps



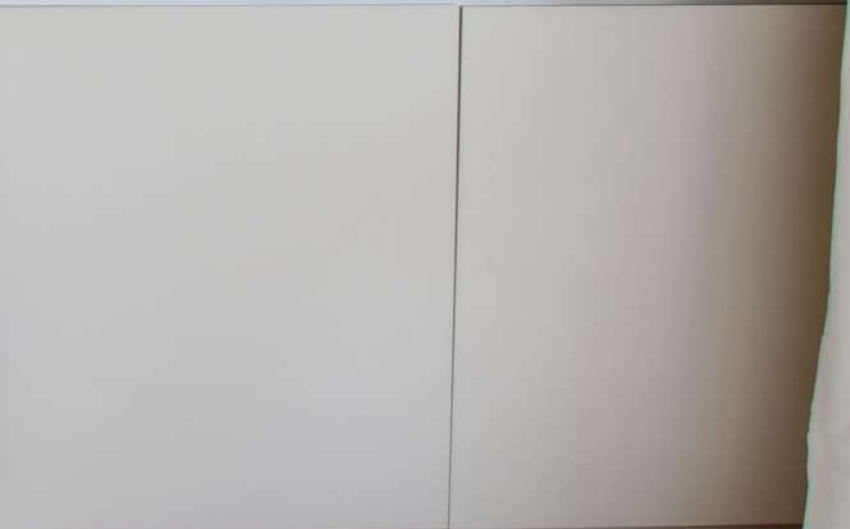
Travel times from Harlow Town station as shown by Google Maps





The Square













SPECIFICATION

Bright and spacious modern apartments with high specification, neutral interiors, the perfect blank canvas to turn into your dream home.

KITCHENS

- Handleless matt kitchen doors
- Soft-close drawers and hinges
- Composite worktop
- Zanussi Integrated appliances:
 - Dishwasher, fridge freezer,
 - Electric oven and hob
- Stainless steel undermount sink
- Zanussi stainless steel extractor hood
- Integrated lighting
- Recessed spotlights

LIVING AREAS

- Wood laminate flooring
- Satin chrome door handles
- Aluminium glazed balcony doors
- White sockets
- Pendant light fitting
- TV points pre-wired for SkyQ

BEDROOMS

- Luxury deep pile carpets
- Pendant lights
- TV points to all bedrooms (SkyQ pre-wired)

BATHROOMS

- White contemporary sanitaryware
- Chrome framed glass screen
- Heated chrome towel rail
- Mirror above washbasin
- Johnsons tiles in Old Stone
- Shaver point
- White recessed downlights

HALLWAYS

- Wood laminate flooring
- Standalone washer/dryer in hallway cupboard
- Recessed spotlights

COMMUNAL AREAS

- Audio door entry system
- Internal & external bike stores
- Post box at GF of each core entrance
- Lift and stairs to all floors

OTHER

- Gas boiler
- Radiators with individual heating controls
- Parking to selected apartments
- 10-Year Structural and Defects Warranty from One Guarantee



APARTMENT LAYOUTS

We have a wonderful variety of different apartment layouts for you to choose from. Choose between, one or two bedrooms from Second to Tenth Floor.

The building has lift access to all floors and secure entry. All apartments have their own balconies or terraces benefiting from lovely views overlooking the private resident garden, Harlow and surrounding areas.

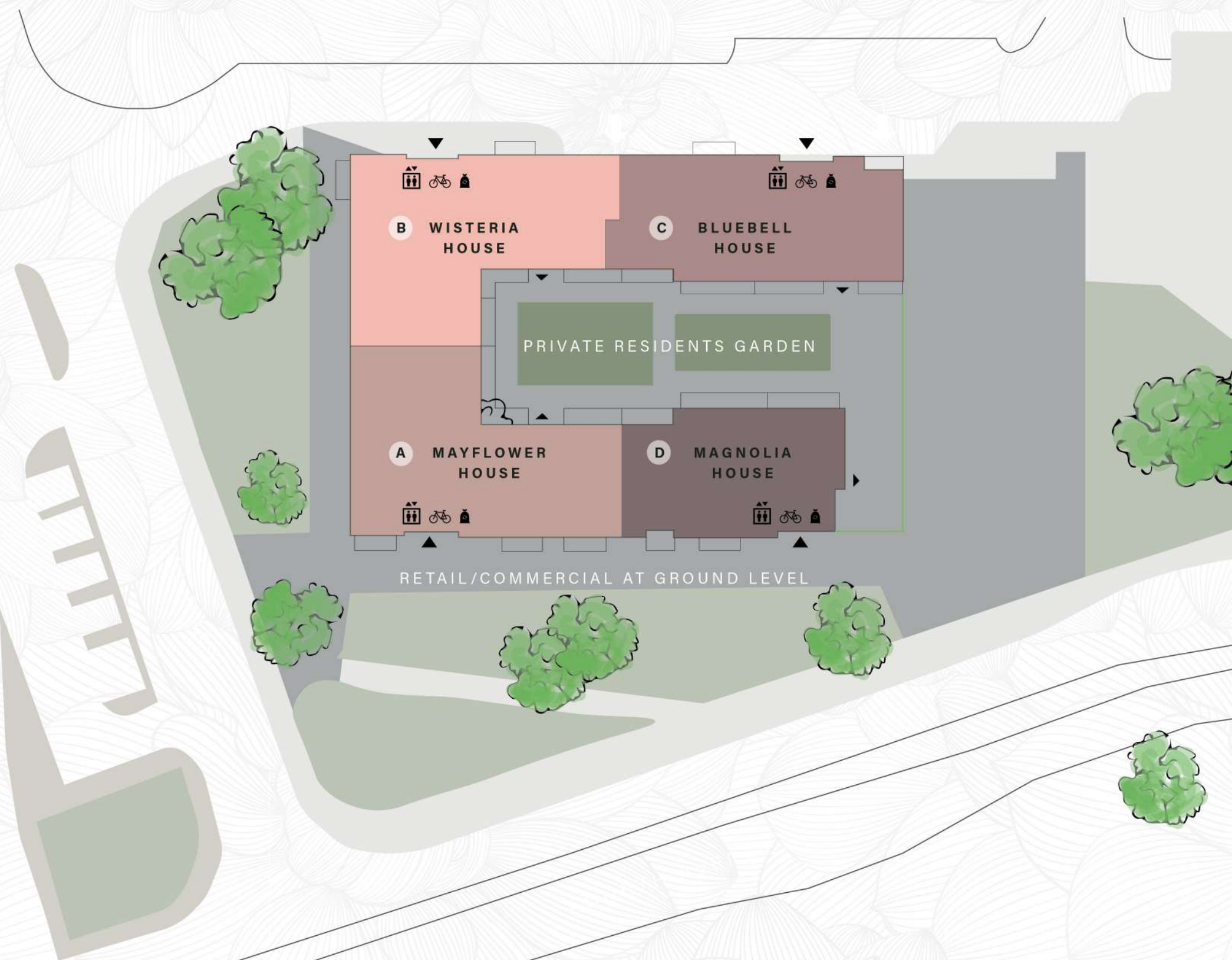
SITE PLAN

There will be commercial and retail space at Ground Level as well as four entrances to Flora Gardens at street level as shown on the plan with their own private lift to each level.

At Ground level, each entrance core has a private bicycle store and secure refuse and recycling area for residents.

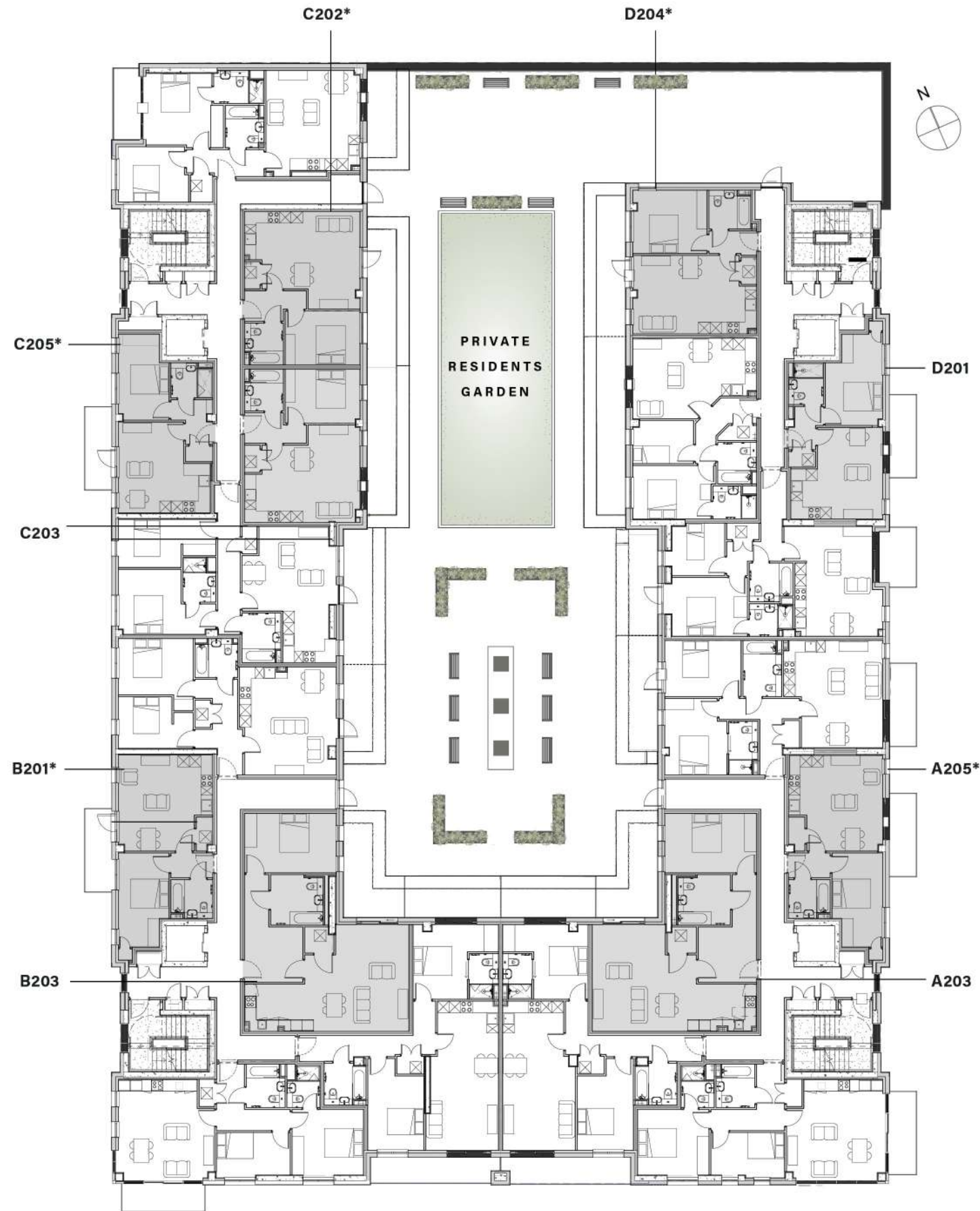
Private car parking is located on the Ground and First Floor levels of the building, and the entrance cores are also accessible from the car parking levels.

You can access your private residents' garden from the access points on the second floor (via lift).



2ND FLOOR

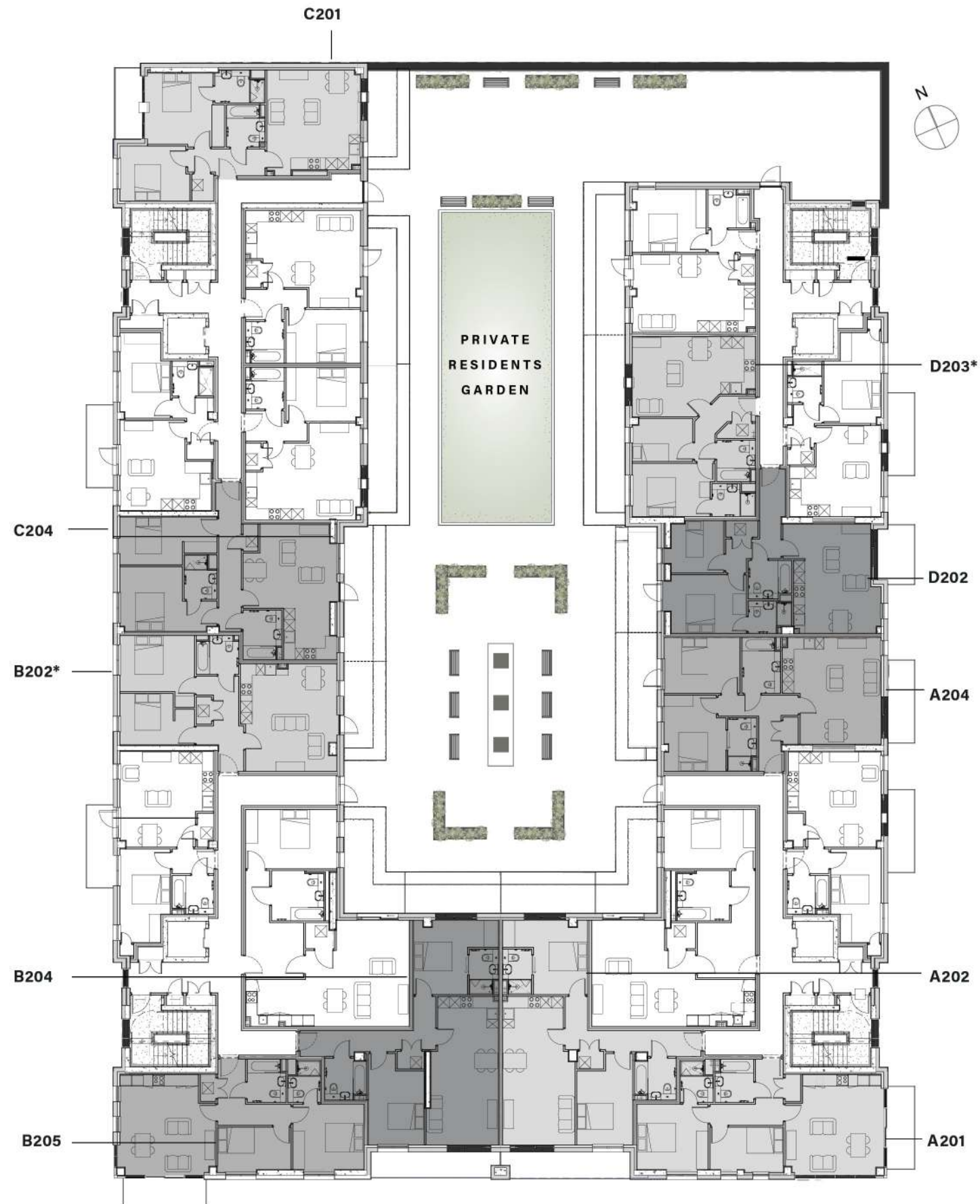
ONE-BEDROOM APARTMENTS



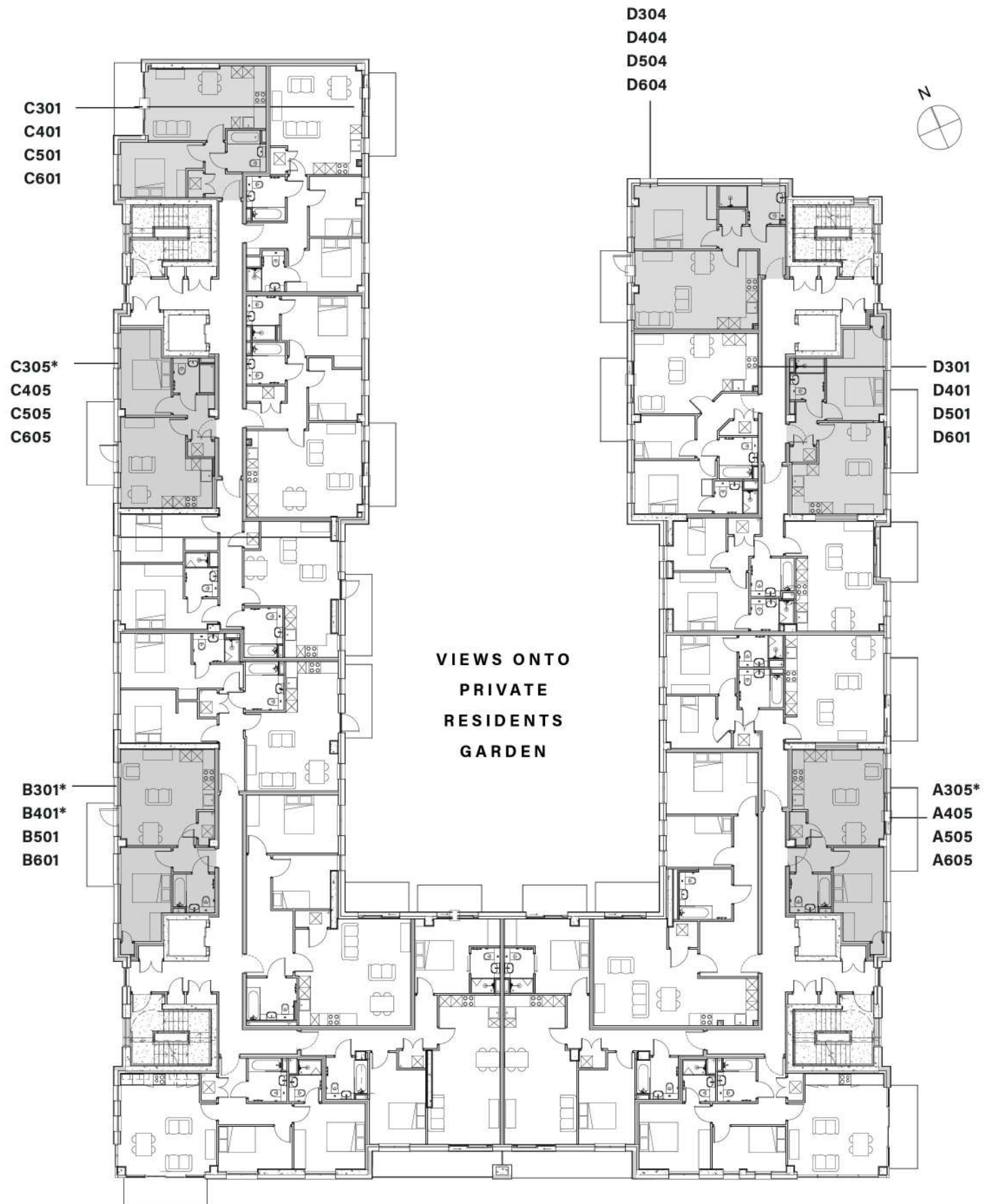
FLAT NO.	SIZE	ROOM DIMENSIONS
A203	72.5m ₂ / 780ft ₂	Kitchen/dining 4.6 x 2.3m / 15' x 7.5' Living room 3.9 x 3.8m / 13' x 12.5' Bedroom 4.7 x 3.1m / 15.5' x 10' Bathroom 2.7 x 2.6m / 9' x 8.5'
A205	44.3m ₂ / 477ft ₂	Kitchen/living/dining 4.9 x 4.8m / 16' x 15.7' Bedroom 4.9 x 2.6m / 16' x 8.5' Bathroom 2.1 x 2.0m / 7' x 6.5'
B201	44.5m ₂ / 479ft ₂	Kitchen/living/dining 4.9 x 4.8m / 16' x 15.7' Bedroom 4.9 x 2.6m / 16' x 8.5' Bathroom 2.1 x 2.0m / 7' x 6.5'
B203	72.4m ₂ / 779ft ₂	Kitchen 4.6 x 2.3m / 15' x 7.5' Living/dining 3.9 x 3.8 m / 13' x 12.5' Bedroom 4.7 x 3.1 m / 15.5' x 10' Bathroom 2.7 x 2.6m / 9' x 8.5'
C202	47.0m ₂ / 506ft ₂	Kitchen 4.0 x 2.9m / 13' x 9.5' Living/dining 5.0 x 3.0m / 16.5' x 10' Bedroom 3.9 x 2.8 m / 13' x 9' Bathroom 3.2 x 2.6m / 10.5' x 8.5'
C203	46.9m ₂ / 505t ₂	Kitchen 4.0 x 2.9m / 13' x 9.5' Living/dining 5.0 x 3.0m / 16.5' x 10' Bedroom 3.9 x 2.8 m / 13' x 9' Bathroom 3.2 x 2.6m / 10.5' x 8.5'
C205	40.4m ₂ / 435t ₂	Kitchen/living/dining 4.7 x 4.7m / 15.5' x 15.5' Bedroom 4.4 x 2.6m / 14' x 8.5' Bathroom 2.2 x 1.8 m / 7' x 6'
D201	42.2m ₂ / 454t ₂	Kitchen/living/dining 4.7 x 4.7m / 15.5' x 15.5' Bedroom 4.7 x 3.0m / 15.5' x 10' Bathroom 2.2 x 1.8 m / 7' x 6'
D204	46.7m ₂ / 503t ₂	Kitchen/living/dining 6.4 x 4.0m / 21' x 13' Bedroom 3.8 x 3.3m / 12.5' x 11' Bathroom 2.2 x 2.0m / 7' x 6.5'

2ND FLOOR

TWO-BEDROOM APARTMENTS



FLAT NO.	SIZE	ROOM DIMENSIONS
A201 B205	63.7m ₂ / 686ft ₂	Kitchen/living/dining 5.0 x 5.0m / 16' x 16' Bedroom 1 3.7 x 3.7 m / 12' x 12' Bedroom 2 3.8 x 2.3 m / 12.5' x 7.5' Bathroom 2.2 x 2.0m / 7' x 6.5' Ensuite 2.2 x 1.7m / 7' x 5.5'
A202 B204	74.5m ₂ / 802ft ₂	Kitchen/living/dining 7.7 x 3.7 m / 25' x 12' Bedroom 1 4.4 x 3.8 m / 14.5' x 12.5' Bedroom 2 4.7 x 2.9 m / 15.5' x 9.5' Bathroom 2.2 x 2.1 m / 7' x 7' Ensuite 2.4 x 1.5 / 8' x 5'
A204	70.5m ₂ / 759ft ₂	Kitchen/living/dining 5.5 x 4.2m / 18' x 14' Bedroom 1 4.0 x 3.2m / 13.5' x 10.5' Bedroom 2 3.9 x 2.9m / 13' x 9.5' Bathroom 2.9 x 2.0m / 9.5' x 6.5' Ensuite 2.8 x 1.5m / 9.5' x 5'
B202*	64.1m ₂ / 690ft ₂	Kitchen/living/dining 5.6 x 4.7m / 18.5' x 15.5' Bedroom 1 3.9 x 2.9m / 13' x 9.5' Bedroom 2 3.9 x 2.7m / 13' x 9' Bathroom 2.2 x 2.0m / 7' x 6.5'
C201	67.7m ₂ / 729ft ₂	Kitchen/living/dining 5.2 x 4.9m / 17' x 16' Bedroom 1 4.0 x 3.7m / 13.5' x 12' Bedroom 2 3.6 x 2.8m / 11.5' x 9' Bathroom 2.2 x 2.0m / 7' x 6.5' Ensuite 2.6 x 1.7m / 8.5' x 5.5'
C204	72.9m ₂ / 785ft ₂	Kitchen/living/dining 7.0 x 4.9m / 23' x 16' Bedroom 1 5.0 x 3.4m / 16.5' x 11' Bedroom 2 5.0 x 2.5m / 16.5' x 8' Bathroom 2.6 x 2.0m / 8.5' x 6.5' Ensuite 2.3 x 1.7m / 7.5' x 5.5'
D202	64.1m ₂ / 690ft ₂	Kitchen/living/dining 5.6 x 4.6m / 18.5' x 15.1' Bedroom 1 3.9 x 3.0m / 13' x 9.9' Bedroom 2 3.9 x 2.7m / 8.9' x 8.9' Bathroom 2.2 x 2.0m / 7' x 6.5' Ensuite 2.2 x 1.7m / 7' x 5.5'
D203	59.4m ₂ / 639ft ₂	Kitchen/living/dining 5.0 x 5.0m / 16' x 16' Bedroom 1 3.7 x 3.7 m / 12' x 12' Bedroom 2 2.7 x 2.7m / 12.5' x 7.5' Bathroom 2.2 x 2.0m / 7' x 6.5' Ensuite 2.2 x 1.7m / 7' x 5.5'



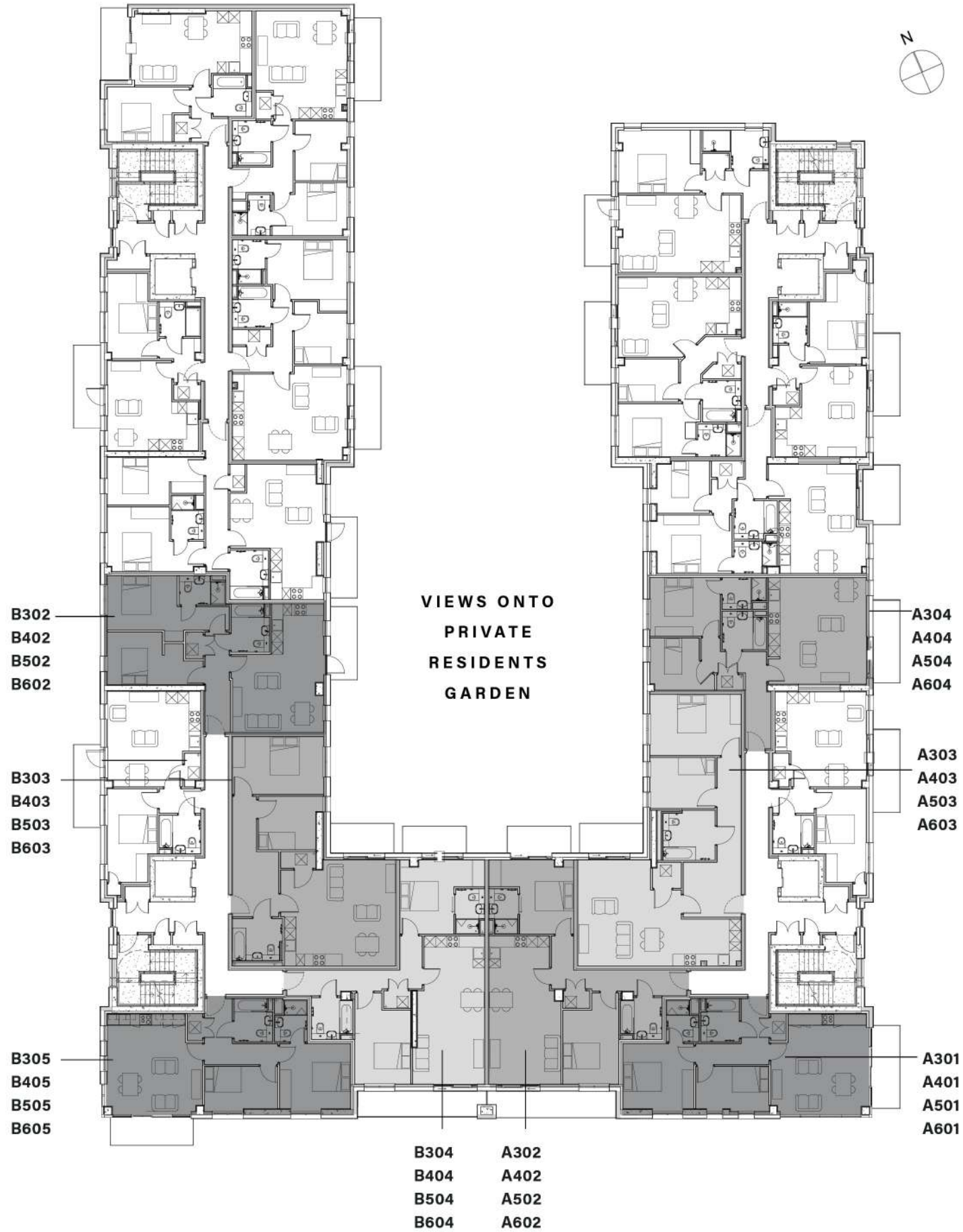
3/4/5/6TH FLOOR

ONE-BEDROOM APARTMENTS

FLAT NO.	SIZE	ROOM DIMENSIONS
A305 A505	42.4m ₂ / 456ft ₂	Kitchen/living/diner 4.9 x 4.8m / 16' x 15.7' Bedroom 4.9 x 2.6m / 16' x 8.5' Bathroom 2.1 x 2.0m / 7' x 6.5'
A405 A605	44.0m ₂ / 474ft ₂	Kitchen/living/diner 4.9 x 4.8m / 16' x 15.7' Bedroom 4.9 x 2.6m / 16' x 8.5' Bathroom 2.1 x 2.0m / 7' x 6.5'
B301 B401 B501 B601	44.5m ₂ / 479ft ₂	Kitchen/living/diner 4.9 x 4.8m / 16' x 15.7' Bedroom 4.9 x 2.6m / 16' x 8.5' Bathroom 2.1 x 2.0m / 7' x 6.5'
C301 C401 C501 C601	43.0m ₂ / 463ft ₂	Kitchen/living/diner 6.1 x 3.7m / 20' x 12' Bedroom 3.4 x 2.8m / 11' x 9' Bathroom 2.2 x 2.0m / 7' x 6.5'
C305 C405 C505 C605	40.4m ₂ / 435ft ₂	Kitchen/living/diner 4.7 x 4.7m / 15.5' x 15.5' Bedroom 4.4 x 2.6m / 14' x 8.5' Bathroom 2.2 x 1.8m / 7' x 6'
D301 D501	40.6m ₂ / 437ft ₂	Kitchen/living/diner 4.7 x 4.7m / 15.5' x 15.5' Bedroom 4.7 x 3.0m / 15.5' x 10' Bathroom 2.2 x 1.8m / 7' x 6'
D401 D601	42.2m ₂ / 454ft ₂	Kitchen/living/diner 4.7 x 4.7m / 15.5' x 15.5' Bedroom 4.7 x 3.0m / 15.5' x 10' Bathroom 2.2 x 1.8m / 7' x 6'
D304 D404 D504 D604	53.7m ₂ / 578ft ₂	Kitchen/living/diner 6.4 x 4.0m / 21' x 13' Bedroom 4.3 x 3.3m / 14' x 11' Bathroom 2.0 x 2.0m / 6.5' x 6.5'

3/4/5/6TH FLOOR

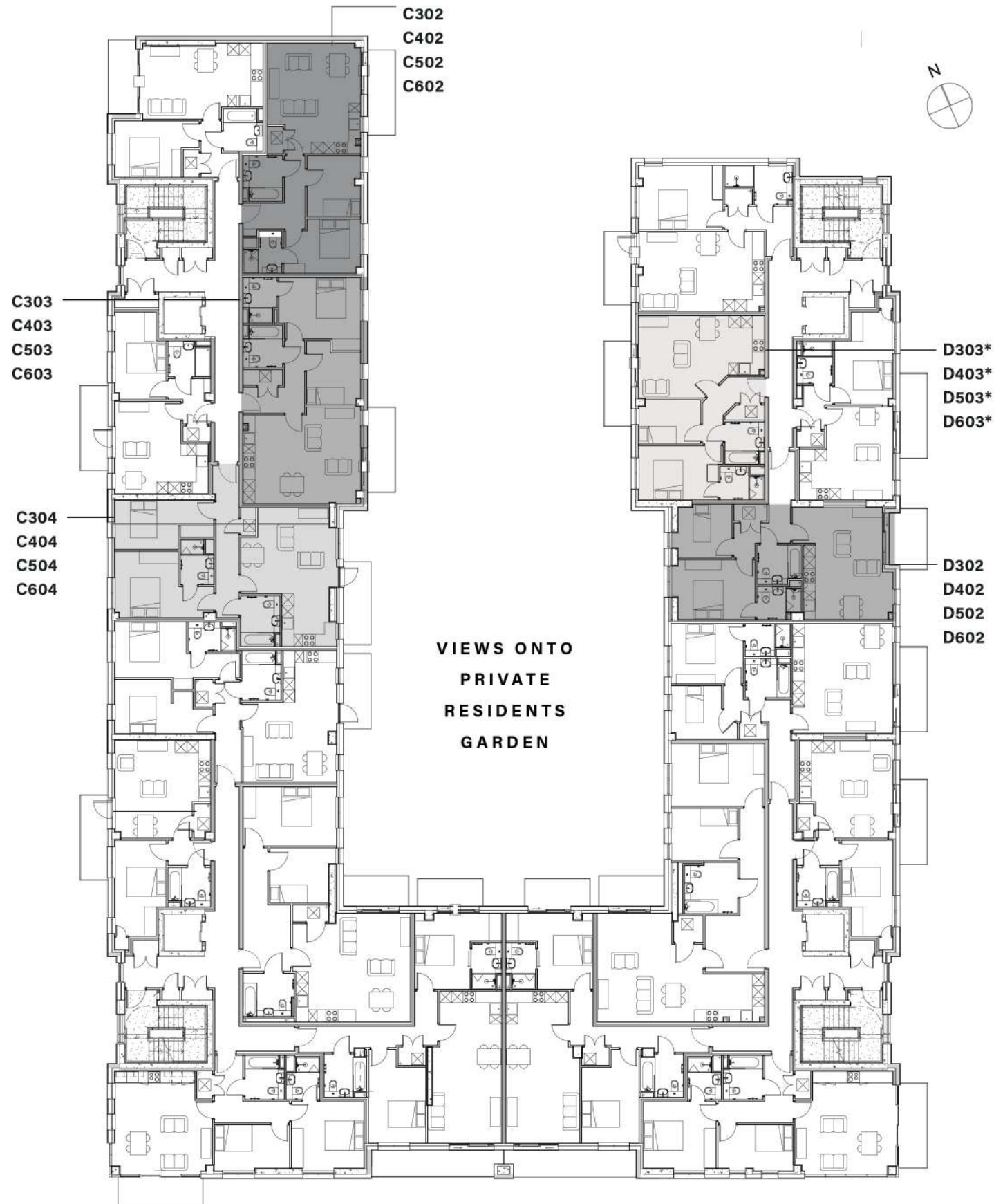
TWO-BEDROOM APARTMENTS



FLAT NO.	SIZE	ROOM DIMENSIONS
A301 A401 A501 A601	63.7m ₂ / 686ft ₂	Kitchen/living/dining 5.0 x 5.0m / 16' x 16' Bedroom 1 3.7 x 3.7 m / 12' x 12' Bedroom 2 3.8 x 2.3 m / 12.5' x 7.5' Bathroom 2.2 x 2.0m / 7' x 6.5' Ensuite 2.2 x 1.7m / 7' x 5.5'
A302 A402 A502 A602	74.6m ₂ / 803ft ₂	Kitchen/living/dining 7.7 x 3.7 m / 25' x 12' Bedroom 1 4.4 x 3.8 m / 14.5' x 12.5' Bedroom 2 4.7 x 2.9 m / 15.5' x 9.5' Bathroom 2.2 x 2.1 m / 7' x 7' Ensuite 2.4 x 1.5 / 8' x 5'
A303 A403 A503 A603	86.0m ₂ / 926ft ₂	Kitchen/living/dining 5.5 X 4.6 m / 18' x 15' Bedroom 1 3.7 X 3.0 m / 12' x 10' Bedroom 2 3.4 X 2.7 m / 11' x 9' Bathroom 2.3 x 2.0 m / 7.5' x 6.5'
A304 A404 A504 A604	66.0m ₂ / 710ft ₂	Kitchen/living/dining 5.5 X 5.0 m / 18' x 16.5' Bedroom 1 3.7 X 3.0 m / 12' x 10' Bedroom 2 3.4 X 2.7 m / 11' x 9' Bathroom 2.3 x 1.7 m / 7.5' x 6' Ensuite 2.3 x 1.7 m / 7.5' x 6'
B302 B402 B502 B602	70.9m ₂ / 763ft ₂	Kitchen/living/dining 6.7 x 4.7 m / 22' x 15.5' Bedroom 1 3.6 x 2.8 m / 11.5' x 9' Bedroom 2 5.0 x 2.7 m / 16.5' x 9' Bathroom 2.5 x 2.0 m / 8' x 6.5' Ensuite 2.4 x 1.5 m / 8' x 5'
B303 B403 B503 B603	75.5m ₂ / 813m ₂	Kitchen/living/dining 5.8 x 5.0 m / 19' x 16.5' Bedroom 1 4.7 x 3.0 m / 15.5' x 10' Bedroom 2 3.0 x 2.8 m / 10' x 9' Bathroom 2.6 x 2.2 m / 8.5' x 7'
B304 B404 B504 B604	74.6m ₂ / 803ft ₂	Kitchen/living/dining 7.7 x 3.7 m / 25' x 12' Bedroom 1 4.4 x 3.8 m / 14.5' x 12.5' Bedroom 2 4.7 x 2.9 m / 15.5' x 9.5' Bathroom 2.2 x 2.1 m / 7' x 7' Ensuite 2.4 x 1.5 / 8' x 5'
B305 B405 B505 B605	63.7m ₂ / 686ft ₂	Kitchen/living/dining 5.0 x 5.0 m / 16.5' x 16.5' Bedroom 1 3.7 x 3.7 m / 12' x 12' Bedroom 2 3.8 x 2.3 m / 12.5' x 7.5' Bathroom 2.2 x 2.0 m / 7' x 6.5' Ensuite 2.2 x 1.7 m / 7' x 5.5'

3/4/5/6TH FLOOR

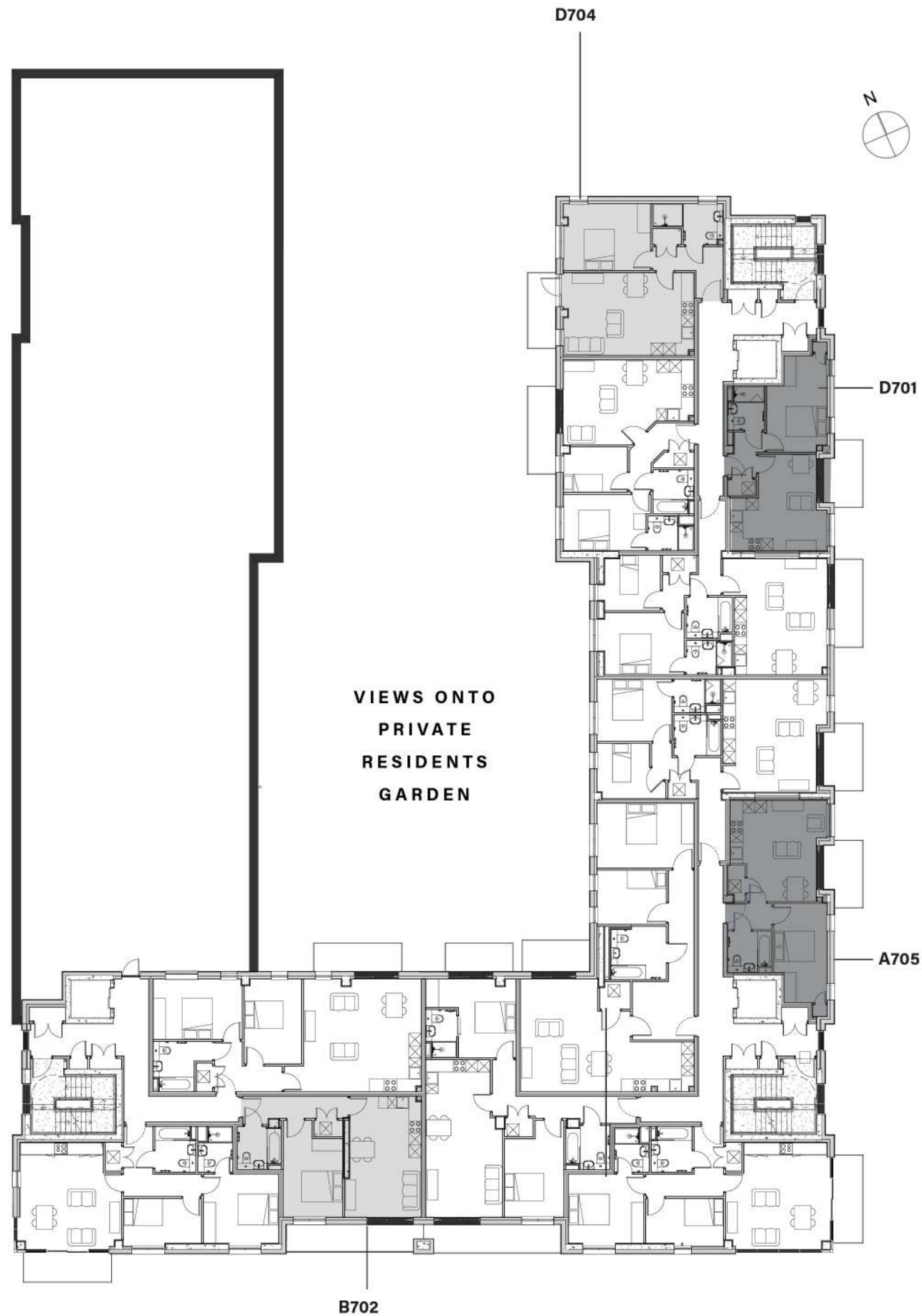
TWO-BEDROOM APARTMENTS



FLAT NO.	SIZE	ROOM DIMENSIONS
C302 C402 C502 C602	62.3m ₂ / 671ft ₂	Kitchen/living/dining 5.6 x 4.7 / 18' x 15.5' Bedroom 1 3.9 x 2.75 m / 13' x 9' Bedroom 2 2.7 x 3.1 m / 9' x 10' Bathroom 2.3 x 2.0m / 7.5' x 6.5' Ensuite 2.1 x 2.0m / 7' x 6.5'
C303 C403 C503 C603	68.0m ₂ / 732ft ₂	Kitchen/living/dining 6.0 x 4.9 m / 19.7' x 16' Bedroom 1 4.2 x 3.1 m / 13.8' x 10' Bedroom 2 2.7 x 2.7 m / 9' x 9' Bathroom 2.2 x 2.0 m / 7' x 6.5' Ensuite 2.3 x 1.7 / 7.5' x 5.5'
C304 C404 C504 C604	72.9m ₂ / 785ft ₂	Kitchen/living/dining 7.0 x 4.9m / 23' x 16' Bedroom 1 5.0 x 3.4m / 16.5' x 11' Bedroom 2 5.0 x 2.5m / 16.5' x 8' Bathroom 2.6 x 2.0m / 8.5' x 6.5' Ensuite 2.3 x 1.7m / 7.5' x 5.5'
D302 D402 D502 D602	59.4m ₂ / 639ft ₂	Kitchen/living/dining 5.0 x 5.0m / 16' x 16' Bedroom 1 3.7 x 3.7 m / 12' x 12' Bedroom 2 3.8 x 2.3m / 12.5' x 7.5' Bathroom 2.2 x 2.0m / 7' x 6.5' Ensuite 2.2 x 1.7m / 7' x 5.5'
D303 D403 D503 D603	61m ₂ / 656m ₂	Kitchen/living/dining 6.4 x 4.1m / 21' x 13.5' Bedroom 1 4.0 x 2.7m / 13.5' x 9' Bedroom 2 3.1 x 2.2m / 10' x 7' Bathroom 2.1 x 2.0m / 7' x 6.5' Ensuite 2.2 x 1.7m / 7' x 5.5'

7TH FLOOR

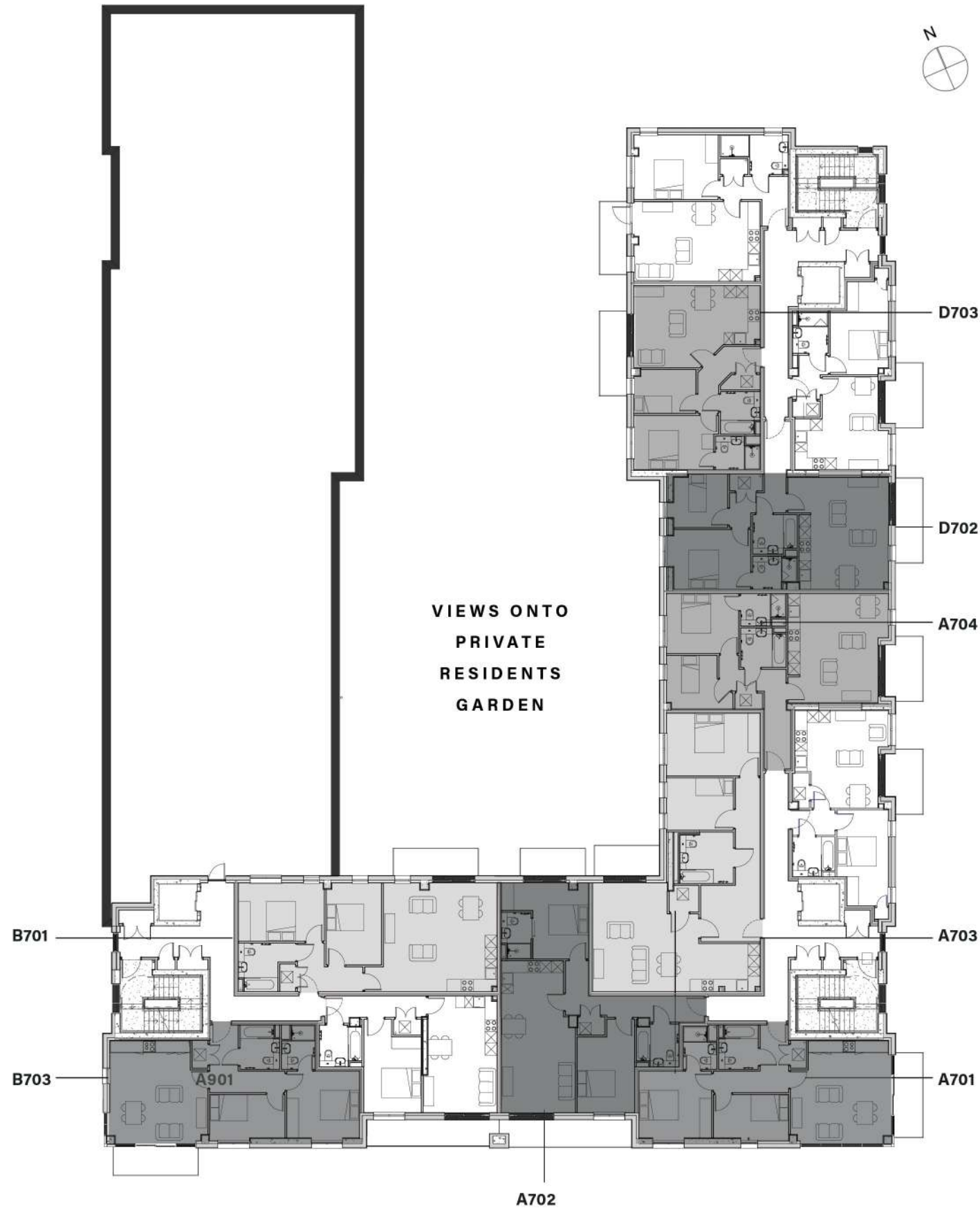
ONE-BEDROOM APARTMENTS



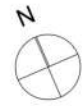
FLAT NO.	SIZE	ROOM DIMENSIONS
D701	40.6m ₂ / 437ft ₂	Kitchen/living/diner 4.7 x 4.7m / 15.5' x 15.5' Bedroom 4.7 x 3.0m / 15.5' x 10' Bathroom 2.2 x 1.8m / 7' x 6'
D704	53.7m ₂ / 578ft ₂	Kitchen/living/diner 6.4 x 4.0m / 21' x 13' Bedroom 4.3 x 3.3m / 14' x 11' Bathroom 2.0 x 2.0m / 6.5' x 6.5'
A705	42.4m ₂ / 456ft ₂	Kitchen/living/diner 4.9 x 4.8m / 16' x 15.7' Bedroom 4.9 x 2.6m / 16' x 8.5' Bathroom 2.1 x 2.0m / 7' x 6.5'
B702	47.4m ₂ / 510ft ₂	Kitchen/living/dining 5.9 x 3.5 m / 19' x 11.5' Bedroom 4.7 x 2.9 m / 15.5' x 9.5' Bathroom 2.2 x 2.1 m / 7' x 7'

7TH FLOOR

TWO-BEDROOM APARTMENTS



FLAT NO.	SIZE	ROOM DIMENSIONS
A701	63.7m ₂ / 686ft ₂	Kitchen/living/dining 5.0 x 5.0m / 16' x 16' Bedroom 1 3.7 x 3.7m / 12' x 12' Bedroom 2 3.8 x 2.3m / 12.5' x 7.5' Bathroom 2.2 x 2.0m / 7' x 6.5' Ensuite 2.2 x 1.7m / 7' x 5.5'
A702	74.6m ₂ / 803ft ₂	Kitchen/living/dining 7.7 x 3.7m / 25' x 12' Bedroom 1 4.4 x 3.8m / 14.5' x 12.5' Bedroom 2 4.7 x 2.9m / 15.5' x 9.5' Bathroom 2.2 x 2.1m / 7' x 7' Ensuite 2.4 x 1.5m / 8' x 5'
A703	86.0m ₂ / 926ft ₂	Kitchen/living/dining 5.5 x 4.6m / 18' x 15' Bedroom 1 3.7 x 3.0m / 12' x 10' Bedroom 2 3.4 x 2.7m / 11' x 9' Bathroom 2.3 x 2.0m / 7.5' x 6.5'
A704	66.0m ₂ / 710ft ₂	Kitchen/living/dining 5.5 x 5.8 m / 18' x 19' Bedroom 1 4.4 x 3.0 m / 14.5' x 10' Bedroom 2 4.4 x 2.8 m / 14.5' x 9' Bathroom 2.5 x 2.0 m / 8' x 6.5'
B701	71.9m ₂ / 774ft ₂	Kitchen/living/dining 5.5 x 5.8 m / 18' x 19' Bedroom 1 4.4 x 3.0 m / 14.5' x 10' Bedroom 2 4.4 x 2.8 m / 14.5' x 9' Bathroom 2.5 x 2.0 m / 8' x 6.5'
B703	63.8m ₂ / 687ft ₂	Kitchen/living/dining 5.0 x 5.0m / 16' x 16' Bedroom 1 3.7 x 3.7 m / 12' x 12' Bedroom 2 3.8 x 2.3 m / 12.5' x 7.5' Bathroom 2.2 x 2.0m / 7' x 6.5' Ensuite 2.2 x 1.7m / 7' x 5.5'
D702	66.6m ₂ / 717ft ₂	Kitchen/living/dining 5.7 x 4.5m / 19' x 15' Bedroom 1 3.9 x 3.0 m / 13' x 10' Bedroom 2 2.7 x 2.7 m / 9' x 9' Bathroom 2.3 x 2.0 m / 7.5' x 6.5' Ensuite 2.3 x 1.7 m / 7.5' x 5.5'
D703	59.4m ₂ / 639ft ₂	Kitchen/living/dining 5.0 x 5.0m / 16' x 16' Bedroom 1 3.7 x 3.7m / 12' x 12' Bedroom 2 3.8 x 2.3m / 12.5' x 7.5' Bathroom 2.2 x 2.0m / 7' x 6.5' Ensuite 2.2 x 1.7m / 7' x 5.5'



8TH & 9TH FLOOR

ONE & TWO BEDROOM APARTMENTS



FLAT NO.	SIZE	ROOM DIMENSIONS
A801 A901	63.8m ₂ / 687ft ₂	Kitchen/living/dining 5.0 x 5.0m / 16' x 16' Bedroom 1 3.7 x 3.7m / 12' x 12' Bedroom 2 3.8 x 2.3m / 12.5' x 7.5' Bathroom 2.2 x 2.0m / 7' x 6.5' Ensuite 2.2 x 1.7m / 7' x 5.5'
A802 A902	47.4m ₂ / 510ft ₂	Kitchen/living/dining 5.9 x 3.5m / 19' x 11.5' Bedroom 4.7 x 2.9m / 15.5' x 9.5' Bathroom 2.2 x 2.1m / 7' x 7'
A803 A903	71.9m ₂ / 774ft ₂	Kitchen/living/dining 5.5 x 5.8m / 18' x 19' Bedroom 1 4.4 x 3.0m / 14.5' x 10' Bedroom 2 4.4 x 2.8m / 14.5' x 9' Bathroom 2.5 x 2.0m / 8' x 6.5'
B801 B901	71.9m ₂ / 774ft ₂	Kitchen/living/dining 5.5 x 5.8m / 18' x 19' Bedroom 1 4.4 x 3.0m / 14.5' x 10' Bedroom 2 4.4 x 2.8m / 14.5' x 9' Bathroom 2.5 x 2.0m / 8' x 6.5'
B802 B902	47.4m ₂ / 510ft ₂	Kitchen/living/dining 5.9 x 3.5 m / 19' x 11.5' Bedroom 4.7 x 2.9 m / 15.5' x 9.5' Bathroom 2.2 x 2.1 m / 7' x 7'
B803 B903	63.8m ₂ / 687ft ₂	Kitchen/living/dining 5.0 x 5.0m / 16' x 16' Bedroom 1 3.7 x 3.7 m / 12' x 12' Bedroom 2 3.8 x 2.3 m / 12.5' x 7.5' Bathroom 2.2 x 2.0m / 7' x 6.5' Ensuite 2.2 x 1.7m / 7' x 5.5'



10TH FLOOR

ONE & TWO BEDROOM APARTMENTS



FLAT NO.	SIZE	ROOM DIMENSIONS
A1001	63.8m ₂ / 687ft ₂	Kitchen/living/dining 5.0 x 5.0m / 16' x 16' Bedroom 1 3.7 x 3.7m / 12' x 12' Bedroom 2 3.8 x 2.3m / 12.5' x 7.5' Bathroom 2.2 x 2.0m / 7' x 6.5' Ensuite 2.2 x 1.7m / 7' x 5.5'
A1002	47.4m ₂ / 510ft ₂	Kitchen/living/dining 5.9 x 3.5m / 19' x 11.5' Bedroom 4.7 x 2.9m / 15.5' x 9.5' Bathroom 2.2 x 2.1m / 7' x 7'
A1003	71.9m ₂ / 774ft ₂	Kitchen/living/dining 5.5 x 5.8m / 18' x 19' Bedroom 1 4.4 x 3.0m / 14.5' x 10' Bedroom 2 4.4 x 2.8m / 14.5' x 9' Bathroom 2.5 x 2.0m / 8' x 6.5'







ALL ENQUIRIES



01992 940955

herts@lanesexclusivehomes.co.uk
www.lanesexclusivehomes.co.uk



While every care has been taken to ensure accuracy these particulars do not constitute part of any offer or contract and the right to change plans, specifications and materials is reserved. Please note the specification is subject to change and does not form part of the sale contract. Reasonable effort has been made to ensure accuracy, however this cannot be guaranteed and no representation or warranty is made in that regard. Neither the vendor nor its agents make or give, whether in these particulars, during the negotiations or otherwise, any representation or warranty in relation to this property. Specifications for this development may not include fixtures, fittings and furnishings shown in the photographs and computer generated illustrations. Consequently, these particulars should be treated as general guidance only.

Flora
GARDENS

HARLOW CM20 1QR