

LEMSFORD MEWS



3 Bedroom Superior Homes
in the picturesque village of Lemsford, AL8 7TN

Lanes
EXCLUSIVE HOMES

www.lanesexclusivehomes.co.uk



The site of the former Long Arm & Short Arm pub has been a feature of Lemsford Village life for well over a century.

History of The Site

What used to be here?

The site of the former Long Arm & Short Arm pub has been a feature of Lemsford Village life for well over a century. Its unusual name has long intrigued visitors – some say it referred to the two roads leaving the village, one long and one short, while others link it to an old river gauge on the nearby Lea.

Originally a modest cottage and blacksmith's workshop dating back to the 18th century, it became a licensed beer house in the 1870s, serving generations of locals and travellers alike.

By the late 19th century, it was part of McMullen's Brewery, and through the 20th century remained a much-loved community hub.



Images property of Lemsford Local History Group.



Nearby Brocket Hall and its parkland provide beautiful walks, fine dining, and a glimpse of local heritage.

The Local Area

A picturesque historic setting

Lemsford Village is one of Hertfordshire's most picturesque and historic settings – a charming conservation village lying just west of Welwyn Garden City. Centred around its traditional green, church, and riverside pub, Lemsford retains a true sense of rural community while being only minutes from town amenities and excellent transport links.

The River Lea meanders through the village and the nature reserve Lemsford Springs is a stone's throw away, a vital sanctuary for rare birds, adding to its tranquil character.

Despite its peaceful countryside atmosphere, Lemsford is ideally placed for modern living – with Welwyn Garden City station offering direct trains to London, and easy access to the A1(M), M25, and surrounding Hertfordshire countryside.



Lemsford Village is a location that perfectly balances heritage, nature, and convenience – a timeless village at the heart of a thriving region.



Families in Lemsford Village benefit from an excellent choice of schools, combining the charm of a rural setting with the convenience of nearby educational opportunities.

Excellent Choice of Schools

The village itself is home to Lemsford Church of England Primary School, a well-regarded village school with a strong community ethos and a focus on nurturing each child's potential. Just a short drive away, Applecroft School and Homerswood Primary and Nursery School in Welwyn Garden City are both highly rated, offering outstanding primary education options.

For older students, Stanborough School, Monk's Walk School, and Ridgeway Academy provide quality secondary education within easy reach. The area is also well served by respected independent schools, including Sherrardswood School, Haileybury, and Queenswood School for Girls, all offering excellent academic and extracurricular opportunities.



With such a strong selection of both state and independent options close by, Lemsford is ideally placed for families seeking exceptional education in a welcoming and picturesque setting.



For shopping and services, residents can easily access Welwyn Garden City, just a short drive away, which provides high street stores, supermarkets, boutique shops, cafes, and restaurants.



Out & About

Lemsford Village and the surrounding area offer a delightful mix of everyday conveniences and leisure opportunities; all set within Hertfordshire's picturesque countryside. Local essentials are within easy reach in Lemsford itself, with charming village shops and traditional pubs such as the Sun Inn adding to the welcoming community atmosphere.

For leisure and recreation, the village is surrounded by scenic walking and cycling routes along the River Lea, Brocket Hall Park, and the wider Hertfordshire countryside. Outdoor enthusiasts can enjoy golf at the prestigious Brocket Hall Golf Club, as well as nearby equestrian centres and water sports along the river. Popular local dining spots such as The Crooked Chimney provide excellent options for relaxed meals and socialising.

Lemsford also benefits from excellent connectivity. Welwyn Garden City railway station is just a five-minute drive away, providing fast services to London St Pancras in approximately 21 minutes—ideal for commuters. The vibrant town centre of Welwyn Garden City also offers a wide range of amenities, including John Lewis and Waitrose, alongside restaurants, cafés, and seasonal events.

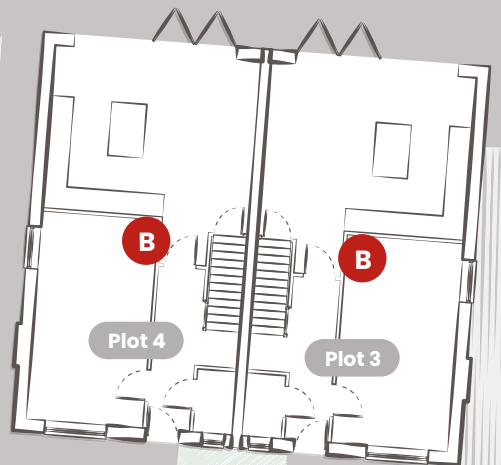
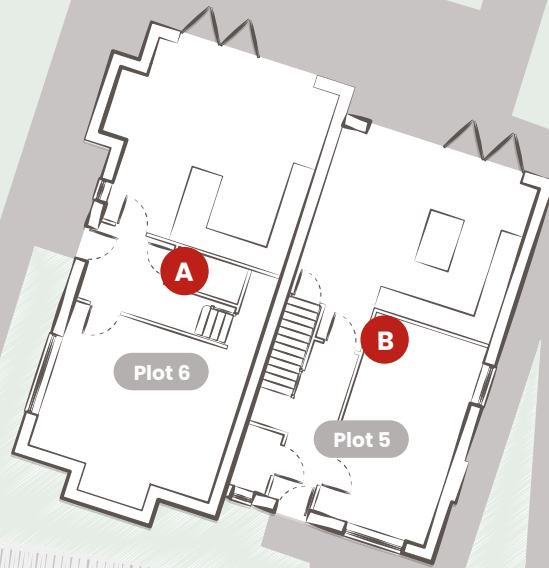


Whether you enjoy relaxed countryside walks, exploring historic estates, or a lively café culture, Lemsford combines tranquillity with easy access to everything you need for modern living.

LEMSFORD MEWS

3 Bedroom Superior Homes

in the picturesque village of Lemsford, AL8 7TN



Formerly the site of The Long Arm & the Short Arm pub. Set close to Brocket Hall, the setting shares in the area's rich rural and social heritage.

House types

Today, as it begins a new chapter with six bespoke homes, the development celebrates the enduring character and village spirit that have defined this corner of Hertfordshire for generations.



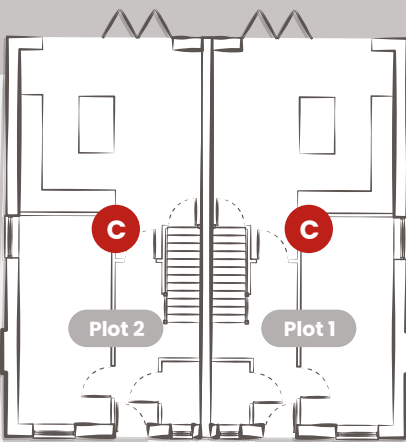
A *The Brockett*

Referencing the grandeur of the nearby estate.



B *The Millhouse*

Reflecting Lemsford's riverside and rural heritage.



C *The Lea*

Inspired by the River Lea's scenic surroundings.

A

The Brockett

Perfect for modern family life



The largest and most distinguished home in the collection,

The Brockett offers expansive, luxurious living spaces designed for modern family life. The ground floor features a stunning rear kitchen-diner with an additional sitting area, a large living room, and a convenient downstairs WC.

Upstairs, the home offers two generous double bedrooms, a family bathroom, and a spacious master suite complete with en-suite and walk-in wardrobe, creating a serene private retreat. The Brockett combines elegance, space, and functionality for those seeking a truly exceptional home.

Please note: This information is indicative only. Floor plan illustrations may vary by development and by individual home.

Ground Floor

Kitchen / Breakfast Room
5.36 x 5.37m (17 ft 7 in x 17 ft 7 in)

Living Room
5.36 x 4.3m (17 ft 7 in x 14 ft 1 in)

WC
2.06 x 1.1m (6 ft 9 in x 3 ft 7 in)

Store
2.25 x 0.84m (7 ft 5 in x 2 ft 9 in)

First Floor

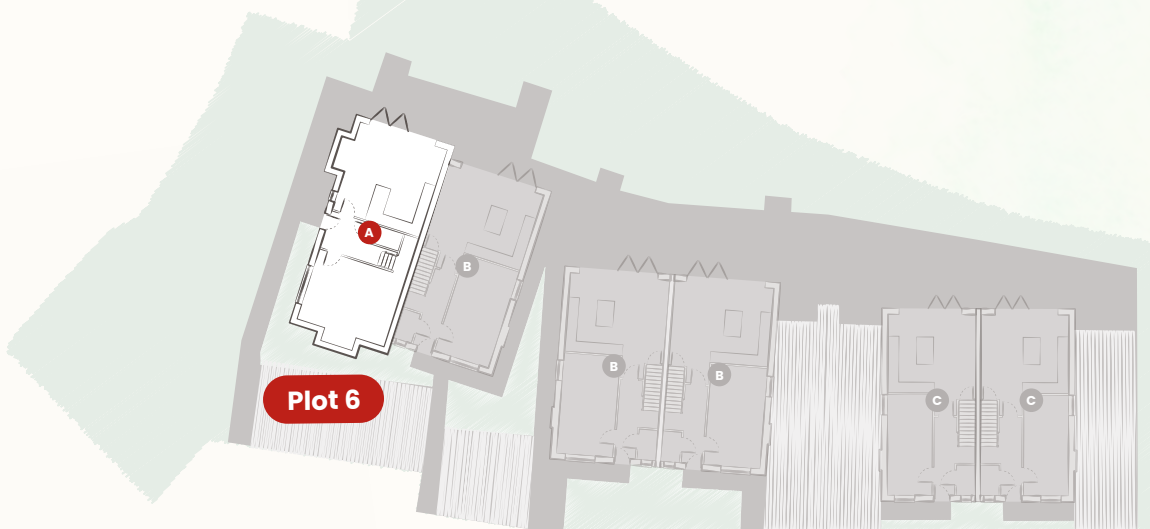
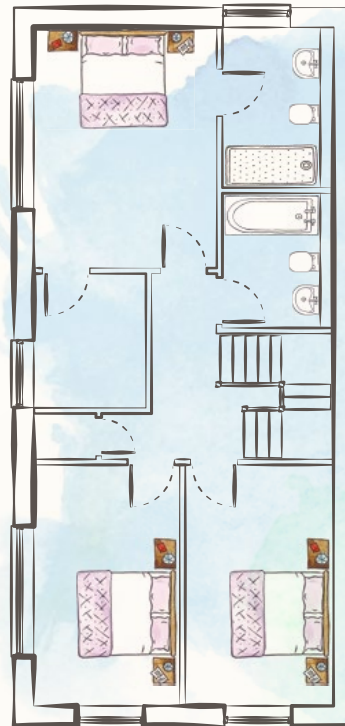
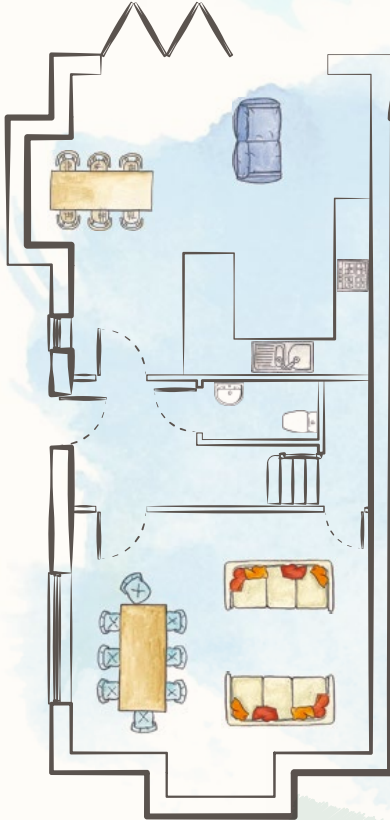
Master Bedroom
5.84 x 3.44m (19 ft 2 in x 11 ft 3 in)

Bedroom 2
4.2 x 2.77m (13 ft 9 in x 9 ft 1 in)

Bedroom 3
2.97 x 3.05m (9 ft 9 in x 10 ft)

Bathroom
2.8 x 2.05m (9 ft 2 in x 6 ft 9 in)

Total: 1103.40 sq.ft



B *The Millhouse*

Generous, well-planned living spaces



A 3-bedroom home with generous, well-planned living spaces. The ground floor features a welcoming entrance hall, downstairs WC, spacious kitchen-diner, and a light-filled rear living area ideal for entertaining.

Upstairs, there is a comfortable double bedroom, a single bedroom, a family bathroom, and a luxurious master suite with en-suite. The Millhouse combines classic charm with practical, stylish living for growing families.

Please note: This information is indicative only. Floor plan illustrations may vary by development and by individual home.

Ground Floor

Kitchen / Breakfast Room
5.92 x 3.31m (19 ft 5 in x 10 ft 10 in)

Living Room
5.84 x 4.62m (19 ft 2 in x 15 ft 2 in)

WC
1.8 x 1.1m (5 ft 11 in x 3 ft 7 in)

Store
1.1 x 1.1m (3 ft 7 in x 3 ft 7 in)

First Floor

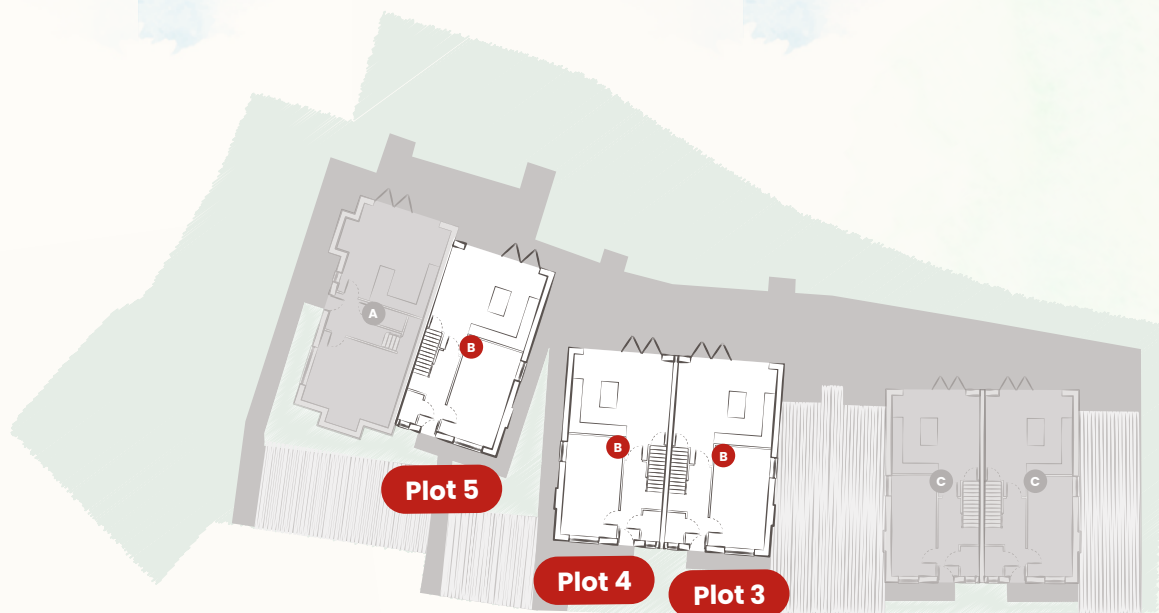
Master Bedroom
5.85 x 3.44m (19 ft 2 in x 11 ft 3 in)

Bedroom 2
4.2 x 2.77m (13 ft 9 in x 9 ft 1 in)

Bedroom 3
2.3 x 2.5m (7 ft 7 in x 8 ft 2 in)

Bathroom
2.8 x 2.05m (9 ft 2 in x 6 ft 9 in)

Total: 1001.19 sq.ft



The Lea

Charming and thoughtfully designed



A charming and thoughtfully designed 3-bedroom home, The Lea offers a perfect balance of style and practicality. The ground floor features a welcoming entrance hall, convenient downstairs WC, a modern kitchen-diner, and a bright rear living area.

Upstairs, you'll find a comfortable double bedroom, a single bedroom, a family bathroom, and a luxurious master suite with en-suite, providing a peaceful retreat. Ideal for modern family life, The Lea combines functionality with elegant living spaces.

Please note: This information is indicative only. Floor plan illustrations may vary by development and by individual home.

Ground Floor

Kitchen / Breakfast Room
5.92 x 2.64m (19 ft 5 in x 8 ft 8 in)

Living Room
5.17 x 4.62m (16 ft 11 in x 15 ft 2 in)

WC
1.8 x 1.1m (5 ft 11 in x 3 ft 7 in)

Store
1.1 x 1.1m (3 ft 7 in x 3 ft 7 in)

First Floor

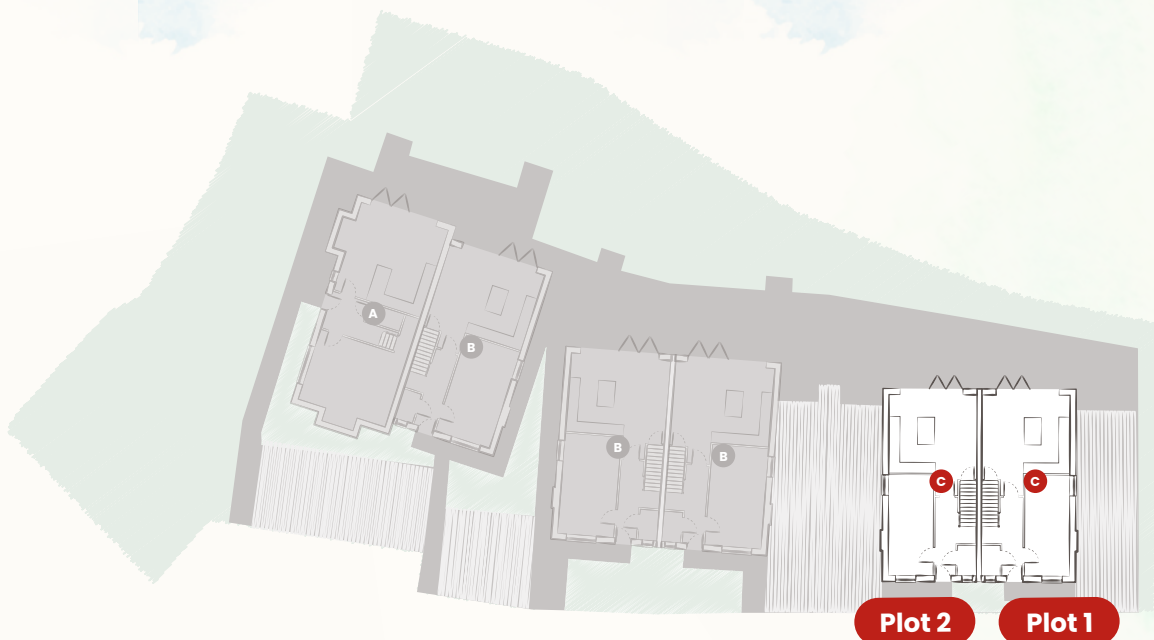
Master Bedroom
5.17 x 2.76m (16 ft 11 in x 9 ft 1 in)

Bedroom 2
4.2 x 2.77m (13 ft 9 in x 9 ft 1 in)

Bedroom 3
2.3 x 2.65m (7 ft 7 in x 8 ft 8 in)

Bathroom
2.77 x 1.95m (9 ft 1 in x 6 ft 5 in)

Total: 862.23 sq.ft



Plot 2

Plot 1

Specifications

Interior

- Premium staircase with matching caps and handrail
- Deanta 5-panel oak veneered doors throughout
- 100mm white pencil rounded skirting boards
- 70mm white pencil rounded architrave
- Satin white-painted window sills
- luxury vinyl tile (LVT) throughout ground floor (colour options available to choose from subject to build stage)
- 80/20 country twist carpet within living room, and bedrooms (*colour options available to choose from subject to build stage)
- Vinyl within bathroom and en-suite (*colour options available to choose from subject to build stage)

Exterior

- Composite front door (*colour options available to choose from subject to build stage)
- PVC-U white windows
- White Aluminium bi-folding patio doors
- Soft landscaping enhancing the external areas of the property
- Stylish engineered block retaining walls and steps in the gardens
- Paving slabbed pathways and patios
- Block paved driveways

Electrics

- Wall-mounted EV car charging point for electric vehicles
- Fiber connectivity ensuring high speed internet access throughout each home
- A stylish combination of pendant and white spotlights throughout each home
- Smoke alarms installed for peace of mind and safety
- Bluetooth ceiling speakers within kitchens
- USB/USB-C plug sockets in certain locations i.e. kitchen and bedrooms

Bathroom

- White bathroom suites with low-profile shower trays
- Stylish vanity units with large storage space
- Splash back to sink, and full height tiles around the bath and shower enclosure
- Splash back to basin in downstairs cloakroom
- A selection of wall tiles to choose from subject to build stage

Kitchen

- A shaker 5-piece style kitchen (colour options to choose from subject to build stage)
- A mix of knob and cup handles in brushed nickel
- Traditional cornice and pelmets included
- Glass splash back to sink and hob area
- Quartz worktops and up-stands
- 1.5 bowl composite sink with chrome mixer tap
- Cutlery insert drawers
- Beko 90cm built in double oven
- Beko induction hob
- Beko cooker hood
- Beko integrated dishwasher
- Beko integrated fridge freezer 60/40
- Beko integrated washer dryer

Heating

- Samsung Monobloc air source heat pump with tank system
- Samsung heating controls
- Underfloor heating to ground floors
- White enamel finish radiators with black towel rails in first floor bathrooms.

**Early reservations can benefit from amending specifications to suit your needs - subject to build stage. Price changes may occur dependent on desired specifications.*



Our Story

At Sundon Homes, family is at the heart of everything we do. As a family-run business, we understand what it means to create a home – a place where life unfolds, memories are made, and every detail matters. Our vision has always been to build homes that combine timeless design, thoughtful layouts, and practical living spaces, ensuring each property is as functional as it is beautiful.

Our construction arm, Roseground, allows us to be directly involved in every stage of the build, giving us full control over craftsmanship and quality. This hands-on approach ensures that every home we deliver meets the exacting standards we set for ourselves and reflects the care and attention a family-run business naturally brings.

Being family-led also means we understand the importance of creating homes for families – from practical layouts to spaces that inspire and delight. And our commitment continues long after the build is complete, with dedicated aftercare that gives every homeowner peace of mind.

Our Promise

At Sundon Homes, we believe a home should be more than a building – it should be a space that inspires, functions beautifully, and stands the test of time. With our construction arm, Roseground, we are directly involved in every stage of the build, giving us full control to maintain the highest standards of craftsmanship, design, and attention to detail.

From thoughtfully designed layouts and quality materials to practical, stylish living spaces, every home reflects our commitment to exceptional design and enduring quality. And our promise doesn't stop at completion – we provide comprehensive aftercare, ensuring that families enjoy their homes with confidence and peace of mind.

With Sundon Homes and Roseground, you're investing in a home that is meticulously designed, expertly built, and carefully supported for years of living and memories.





Lanes Exclusive Homes
2 Market Street, Hertford, SG14 1BD

☎ 01992 940955 ✉ herts@lanesexclusivehomes.co.uk 🌐 www.lanesexclusivehomes.co.uk

