



# OLD ROYAL CHACE

ENFIELD

## ROE COURT

1 AND 2 BEDROOM APARTMENTS





### PLOTS 6 & 10 THE GLEN

Kitchen/Living/ Dining Room	3.300m x 7.440m	10'10" x 24'5"
Bedroom	3.385m x 4.055m	11'1" x 13'4"
<b>Total area</b>	<b>50.27 sq.m.</b>	<b>541 sq.ft.</b>

### PLOT 13 THE CREST

Kitchen/Living/ Dining Room	4.887m x 7.003m	16'0" x 23'0"
Bedroom	3.110m x 3.672m	10'2" x 12'1"
<b>Total area</b>	<b>59.47 sq.m.</b>	<b>640 sq.ft.</b>

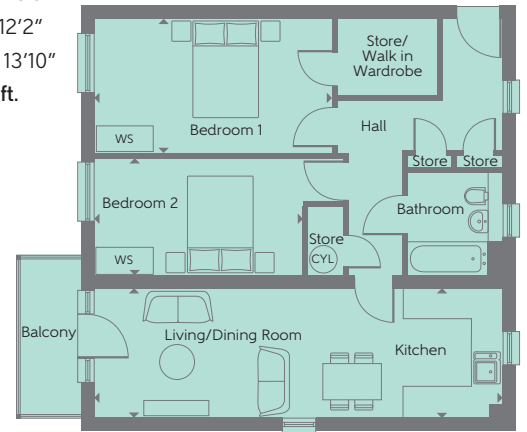


### PLOTS 5 & 9 THE ANTLER

Kitchen/Living/ Dining Room	3.250m x 7.243m	10'8" x 23'9"
Bedroom 1	3.430m x 3.699m	11'3" x 12'2"
Bedroom 2	3.150m x 4.204m	10'4" x 13'10"
<b>Total area</b>	<b>70.71 sq.m.</b>	<b>761 sq.ft.</b>

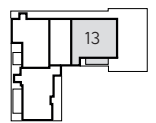
### PLOT 7 THE DOE

Kitchen/Living/ Dining Room	8.605m x 2.770m	28'3" x 9'1"
Bedroom 1	5.039m x 2.788m	16'6" x 9'2"
Bedroom 2	5.039m x 2.487m	16'6" x 8'2"
<b>Total area</b>	<b>70.77 sq.m.</b>	<b>762 sq.ft.</b>



### PLOT 8 THE STAG

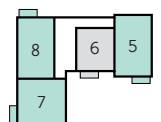
Kitchen/Living/ Dining Room	3.597m x 7.231m	11'10" x 23'9"
Bedroom 1	3.597m x 3.740m	11'10" x 12'3"
Bedroom 2	2.845m x 4.204m	9'4" x 13'10"
<b>Total area</b>	<b>70.90 sq.m.</b>	<b>763 sq.ft.</b>



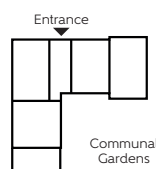
Third floor



Second floor



First floor



Ground floor

Some items shown in this key may be subject to change, and positions could vary from those indicated on this floorplan. Please refer to Sales Advisor for details of your selected plot. External finishes, landscaping and configuration may vary from plot to plot. Please refer to Sales Advisor for further details. All dimensions are approximate and should not be used for carpet sizes, appliance spaces or furniture. Furniture not to scale and all positions are indicative. Kitchen layouts are subject to change. We operate a policy of continuous improvement and individual features such as kitchen and bathroom layouts, doors, windows and elevational treatments may vary from time to time. Consequently these particulars should be treated as general guidance only and do not constitute a contract, part of a contract or a warranty.

#### KEY

- 1 Bedroom
- 2 Bedroom
- WS Wardrobe Space
- ▶ Indicates where dimensions are taken from

