



The Epsom, Ashfield Paddocks Newgatestreet

£1,650,000



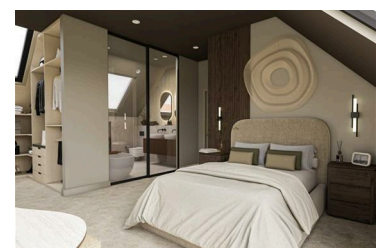
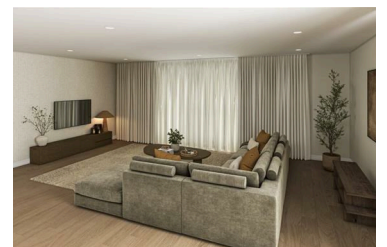
PRE-RELEASE OPPORTUNITY WITH PERSONALISED DESIGN OPTIONS AVAILABLE! *

Plot 1, The Epsom

Introducing Ashfield Paddocks, an exclusive gated collection of just eight individually designed homes set within the sought-after village of Goffs Oak. This carefully curated development forms a contemporary rural enclave, offering a rare opportunity to create a truly bespoke home within an attractive landscaped setting.

Drawing inspiration from the area's historic farmsteads, each home blends timeless architectural character with modern design. A refined palette of

- An executive gated collection of just eight bespoke five-bedroom homes
- Choice of two purchase options to tailor layout, design features, and finishes
- Integrated garage
- Set amidst picturesque countryside with beautiful walks and open green spaces
- Excellent road connections via the M25 and A10 for wider travel
- A rare opportunity to work alongside an experienced developer and interior designer
- Luxurious principal bedroom suites designed for comfort and style finishes
- Conveniently located near Goffs Oak village shops
- Only 12 minutes from Cuffley Station, offering direct links to Finsbury Park and Moorgate
- Covered by a 10-year new build warranty for added peace of mind



2 Market Street, Hertford, Hertfordshire, SG14 1BD
T | 01992 940955

info@lanesexclusivehomes.co.uk | lanesexclusivehomes.co.uk