

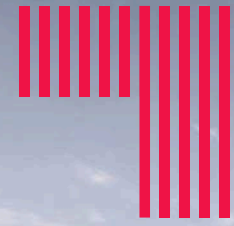
# CLAXTONHOUSE

STEVENAGE • SG1

# CLAXTONHOUSE

STEVENAGE • SG1

**Discover beautifully crafted new homes in the heart of Stevenage. Contemporary studio, 1 and 2-bed designs with high quality finishes in a vibrant new town-centre setting, just 22 minutes from Central London.**



Welcome to the  
new Stevenage.



# An inspiring, energising place to live, work and play.

Stepping off the train – just 22 minutes from Central London – it's immediately clear that Stevenage is a town in the midst of an exciting transformation. Claxton House sits at the heart of this renewal, capturing the energy and optimism of a place being reimagined.

This collection of contemporary studio, 1 and 2-bedroom apartments enjoys an unbeatable central location: moments from the revitalised town centre, within easy reach of the Old Town's shops, cafés and restaurants, and surrounded by cultural venues and green spaces. Directly opposite the station, Claxton House offers exceptional connectivity to London, Cambridge, Gatwick and beyond.

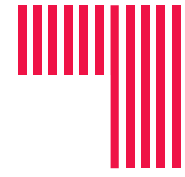
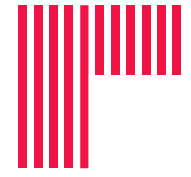
Inside, every home is designed to elevate everyday living, with light-filled layouts and generous proportions complemented by thoughtful communal spaces. Residents can unwind on the expansive west-facing roof terrace, relax in the tranquil internal courtyard, and rely on the concierge to take care of life's smaller details. This is modern town-centre living – refined, connected and effortlessly elevated.

CGI is indicative only.

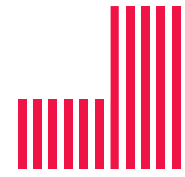
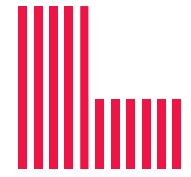








# Raising the bar for Stevenage living.



Discover Stevenage

**Meet a vibrant  
destination for  
an ambitious new  
generation.**

# Always connected. Everything in one place.

The train station may bring you from Central London in a mere 22 minutes, but there's plenty to get excited about right here on your doorstep.

Here's where modern convenience meets old-world charm, and the town's £1-billion regeneration scheme is already making an impact, including transforming the iconic Modernist town square into a contemporary meeting place with a brand-new co-working space, while the new Stevenage Leisure Centre will bring swimming, sport and fitness facilities together under one roof for the first time.

The Old Town's historic high street is home to traditional pubs, independent retailers, coffee shops, bakeries and bars, with a monthly farmers' market showcasing local produce. Those everyday essentials are covered, too, with a choice of supermarkets all within an easy walk of Claxton House.

### 1. David Lloyd

Fully-equipped gym, heated indoor swimming pool, and a luxury spa situated at the nearby leisure park.

### 2. Gordon Craig Theatre

500-seat theatre hosting a range of musicals, comedy and plays.

### 3. Old Town

Stevenage's hidden gem. A charming historic high street with independent shops, boutiques, restaurants, and pubs.

### 4. Fairlands Valley Park

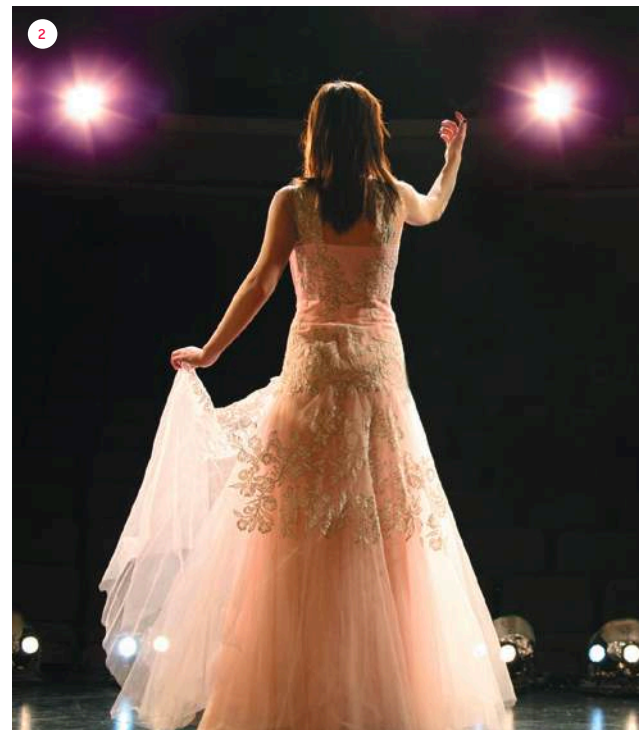
120 acres of parkland with aqua park and sailing.



3



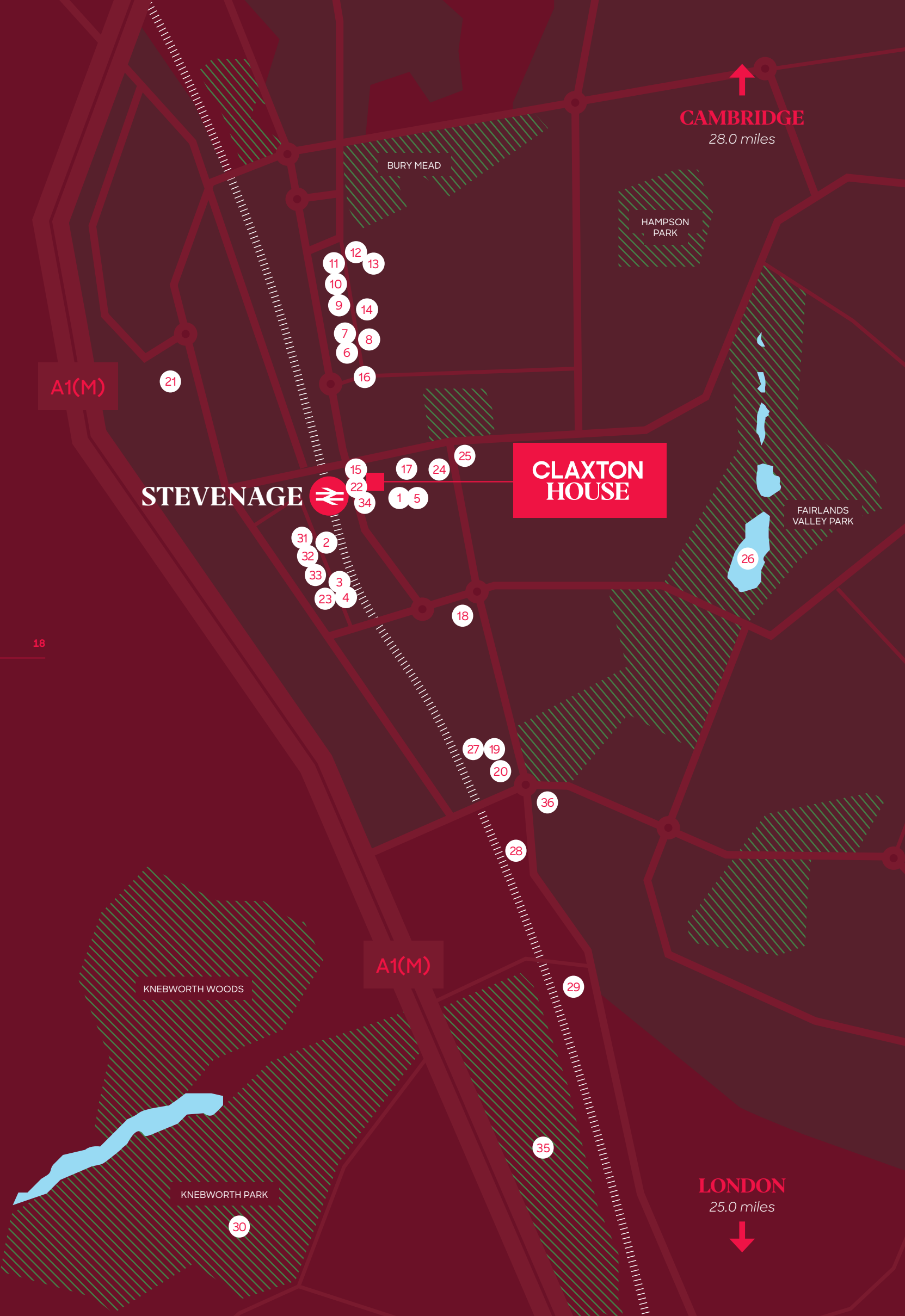
1



2



4



# In the heart of town.

With a home at Claxton House, you're better connected to what matters most. Be on the train platform in just a couple of minutes, within an easy walking distance of shops, bars, restaurants and the gym, and explore the great outdoors – it's all so close.

## Eating & Drinking

- 1 Frequency Coffee
- 2 Nandos
- 3 Five Guys
- 4 Wagamama
- 5 Starbucks
- 6 Lavish
- 7 Angelique
- 8 Miysa Meze Grill
- 9 Smoke BBQ
- 10 Cinnabar
- 11 Helg
- 12 Rump & Wade
- 13 The Broken Seal Tap Room
- 14 El Bar De Tapas

## Fitness & Wellbeing

- 22 Stevenage Arts & Leisure Centre
- 23 David Lloyd
- 24 PureGym
- 25 Stevenage Swimming Centre
- 26 Sailing Lake
- 27 The Gym Group
- 28 Leaner Life
- 29 Odyssey Spa

## Culture & Entertainment

- 30 Knebworth House
- 31 Hollywood Bowl
- 32 Cineworld
- 33 Boom Battle Bar
- 34 Gordon Craig Theatre
- 35 Knebworth Golf Centre
- 36 Stevenage FC

## Everyday essentials

- 15 Tesco
- 16 Old Town High Street
- 17 Westgate Shopping Centre
- 18 ASDA
- 19 9Yards Shopping Centre
- 20 Marks & Spencer
- 21 Costco

## Serious business

Stevenage is home to an impressive collection of major businesses.





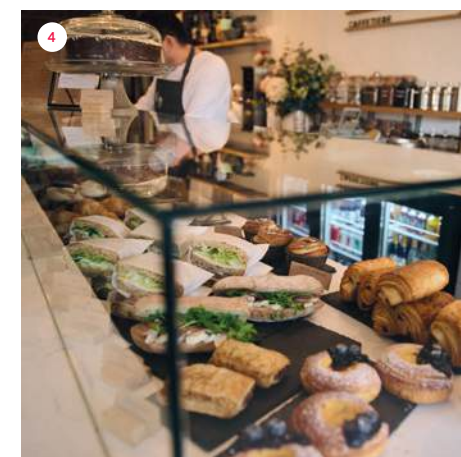
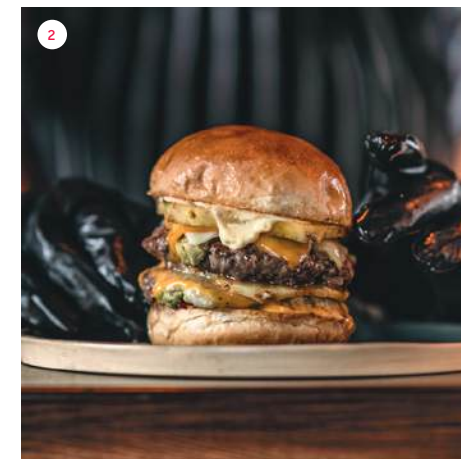
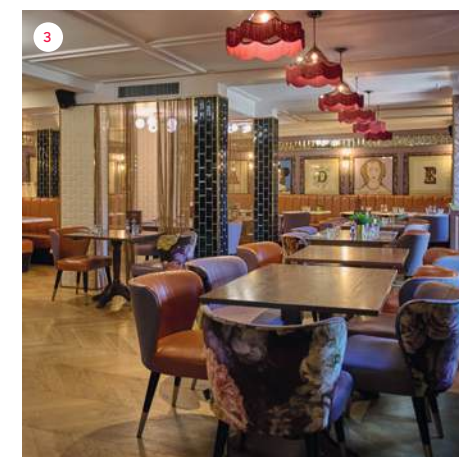
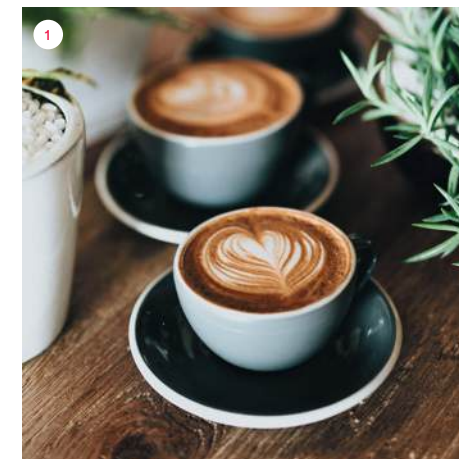
# There's a fresh buzz about Stevenage.

## A vibrant local scene.

Morning, noon and night, Stevenage's food and drink scene offers local flavour for every taste and mood.

Start the day at Frequency Coffee, a new speciality coffee shop and roastery in the freshly revitalised Stevenage Town Square, just steps from Claxton House, and a sign of the cool things to come.

Then it's just a short walk over to the Old Town for local favourites such as Helg Coffee Bakery Pizzeria or the laidback Lola for brunch, or the popular Angelique for steak and cocktails. Occupying a historic seventeenth-century inn on the high street, Rump & Wade brasserie keeps it contemporary with a modern British menu, including a much-loved Sunday roast. For an outdoor dining experience that stimulates all the senses, head to Smoke for Texas-style barbecue – since opening in 2024, its juicy brisket, burgers, pulled pork and platters, smoked on site and served at picnic benches surrounded by roaring fire pits, has become a vibrant destination for local foodies.



**1. Frequency Coffee**  
A multi-concept store focusing on speciality coffee, design, music and flexible space.

**2. Smoke BBQ**  
Barbecue and smokehouse restaurant in the Old Town High Street.

**3. Rump & Wade**  
British Brasserie restaurant serving breakfast, brunch, lunch and dinner.

**4. Helg**  
Scandinavian café serving coffee, baked goods and artisan pizzas.



# Connect with nature.

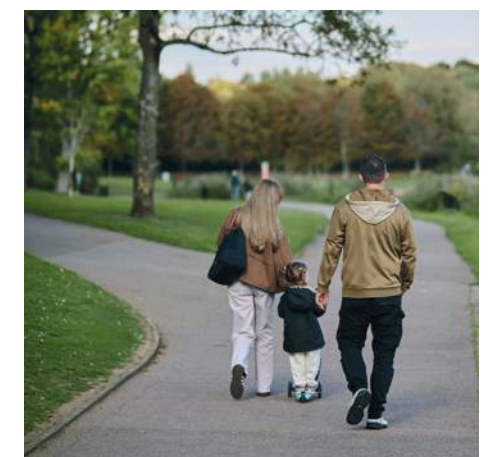
Life in Stevenage is all about balance, so alongside the energy of a progressive town embracing all things new, you can find a sense of calm amongst nature.



# Where wellbeing is a way of life.

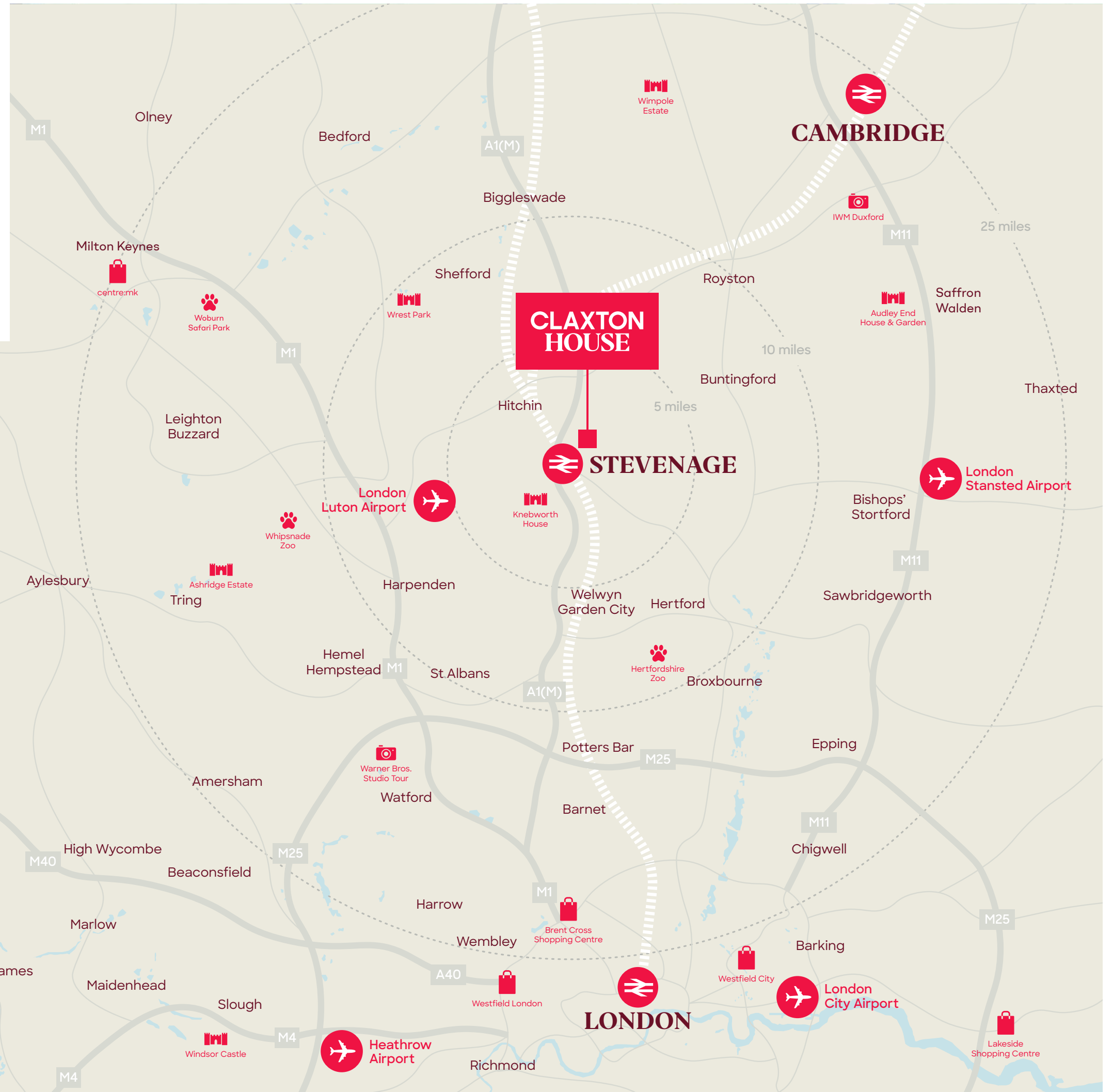
Stevenage feels like a happier, healthier, more connected place to live and work. In the centre of town, new parks and open spaces have been carved out to create precious outdoor areas for residents to relax and unwind, while the town's miles of cycleways and new e-bike share scheme make exploring without the car easy.

The surrounding countryside is alive with green spaces, lush parks and woodland. With its aqua park and lake for sailing, Fairlands Valley Park offers a sense of escapism incredibly close to home, and Knebworth Park is perfect for picnics, walks and deer-spotting, and for active types there's a choice of gyms and golf clubs.



# Central London and beyond.

London, Cambridge, Oxford — everywhere is easily accessible from your new home in Stevenage.



# Your direct line into King's Cross.

Just a 22-minute journey to Stevenage, think of King's Cross as an extension of home.

It's easy to see why the world's leading tech companies and creative thinkers have chosen this emerging neighbourhood for their Head Quarters.

King's Cross is one of London's most exciting and dynamic districts, and from Stevenage you can enjoy direct access to it all.

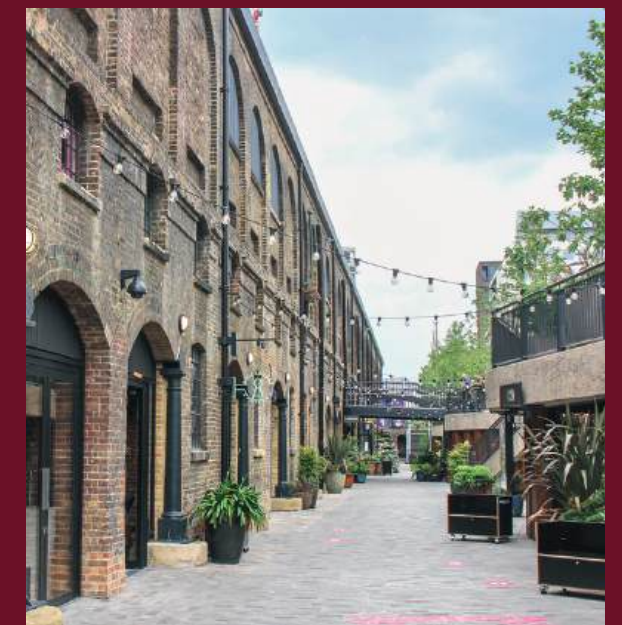
Stevenage is emerging as a leading centre for innovation, home to a thriving network of technology and research organisations on your doorstep. Its prime position within the Golden Triangle - and seamless links to the pioneering district at King's Cross - places the town at the intersection of ambition and opportunity, attracting a new generation seeking progress and possibility.

28



## King's Cross reimagined

Home to tech giants, UAL's new campus, Coal Drops Yard and incredible architecture in a vibrant canal-side setting, King's Cross has well and truly arrived as one of London's most desirable districts.



29



# Home before you know it.

Wherever you work, a home in Stevenage makes the commute that little bit simpler. And we're talking about more than excellent connections into and around central London; direct links to Cambridge and the Golden Triangle's technology, science and innovation hubs makes Stevenage a smart choice.

Commuting closer to home? The town's 45km of traffic-free cycleways make getting around easy. And, when it's time to travel further afield for work or play, Stevenage's location in-between Luton and Stansted airports gives you plenty of options.



Town Centre  
**1 min**

Bus Interchange  
**2 mins**

Stevenage Station  
**4 mins**



Old Town  
**2 mins**

Fairlands Valley Park  
**7 mins**

Knebworth Park  
**16 mins**



Hitchin  
**6.3 miles**

Hertford  
**11.0 miles**

London Luton Airport →  
**12.2 miles**

London Stansted Airport →  
**28.6 miles**

Cambridge  
**29.6 miles**

Central London  
**30.7 mins**

Oxford  
**66.7 mins**



Finsbury Park ⇄  
**21 mins**

London King's Cross ⇄  
**22 mins**

St Pancras International  
**27 mins**

London Moorgate ⇄  
**35 mins**  
*via change at King's Cross*

Cambridge  
**40 mins**

Gatwick Airport  
**1 hr 13 mins**



*Travelling from London  
St Pancras International*

Lille  
**1 hr 22 mins**

Brussels  
**1 hr 57 mins**

Paris  
**2 hrs 22 mins**

*Fastest train time to King's Cross time based on selected Great Northern or LNER services. Journey times vary by service and time of day*

*Remaining travel times are sourced from Google Maps (using shortest routes) and National Rail (travelling at peak time).*

Interiors and spaces

**Design that feels  
fresh, contemporary  
and considered**

# A tranquil and contemporary sanctuary.

The collection of contemporary homes at Claxton House has been thoughtfully designed to make you feel instantly at home. And, in a town where it's so easy to feel connected, these are spaces that invite you to switch off from the hum of everyday life and truly unwind.

Apartments are flooded with natural light from full-height balconies and windows, and feature an open-plan design that adapts to your lifestyle, whether it's working from home, gathering friends for dinner or simply enjoying precious downtime.

It's the finer details that make the difference, and the apartments' clean lines and a nature-inspired palette create spaces that feel both calm and uplifting, and offer the perfect canvas for injecting your own style and personality.

**Clean lines  
meet timeless,  
high-quality  
touches.**

CGIs are indicative only.







38

CGIs are indicative only.

# Specification.

## Kitchens

- Cashmere matt finish kitchen units with stainless steel pull handles
- Crystal marble laminate worktops with glass splashback
- Blanco monobloc mixer tap in chrome
- Stainless steel sink
- Integrated single oven and hob in black
- Integrated stainless steel rangehood
- Integrated fridge/freezer
- Integrated dishwasher
- Free standing washer/dryer to hallway cupboards

## Bathrooms & Ensuites

- Thermostatic bath shower mixer
- Roca steel bath
- Glass bath screen with chrome trim
- Slimline shower tray (to ensuite)
- Sliding glass shower screen (to ensuite)
- Chrome basin mixer tap
- White sanitaryware with wall mounted sink and built-in vanity unit
- Soft closing toilet seat
- White wall mounted WC with concealed cistern and chrome flushplate
- Electric towel radiator
- Extractor fan
- Bevelled edge bathroom mirror

## Interior Finishes

- Built-in white wardrobes with stainless steel round bar handles
- Brushed steel door handles and hinges
- Wood effect flooring to kitchen, living areas, hallways and cupboards
- Quality carpets to bedrooms
- LVT flooring to bathrooms
- Aluminium clad double glazed windows
- White matt emulsion to walls and ceilings
- White gloss finish to woodwork

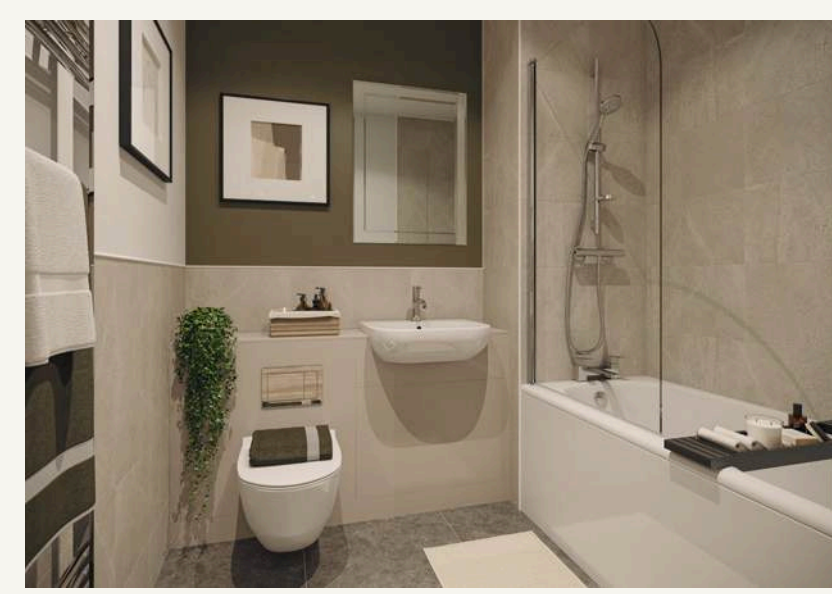
## Heating & Electrics

- White recessed LED downlights and white pendant light fittings
- Matt white sockets and light switches
- Wall mounted electric heaters
- Entry phone system
- Smoke alarms

## General

- Concierge service
- Lobby to main entrance
- Passenger lifts to all floors
- Letterboxes within entrances
- Private roof terrace
- Communal landscaped central courtyard
- Secure cycle storage
- 10 year new build warranty

39





Floor plans

**Your choice of studio,  
one or two bedroom  
apartments and  
duplexes.**

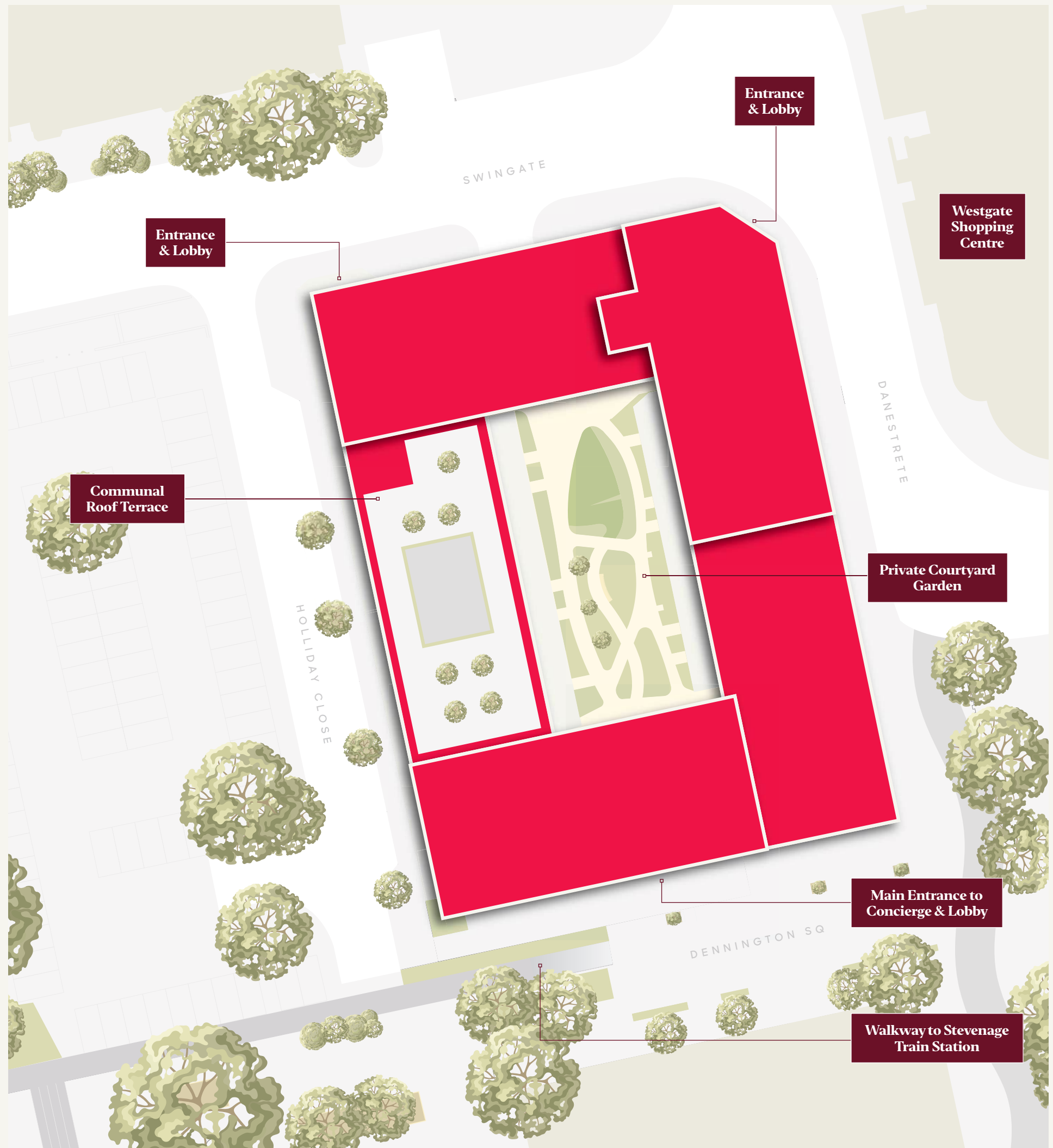
# CLAXTONHOUSE

STEVENAGE • SG1

Discover the most  
desirable address in  
Stevenage



Site plan is indicative only.

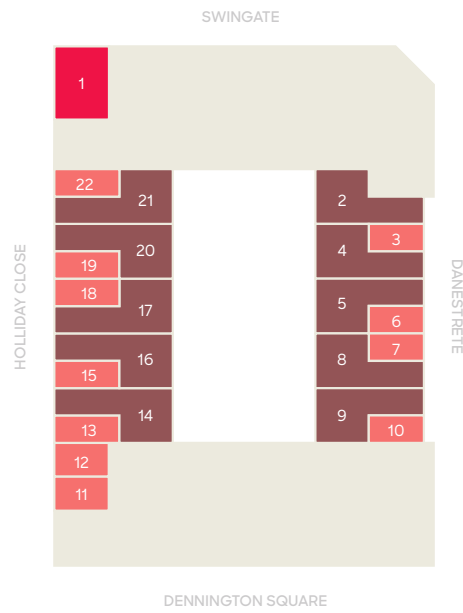


# Claxton House

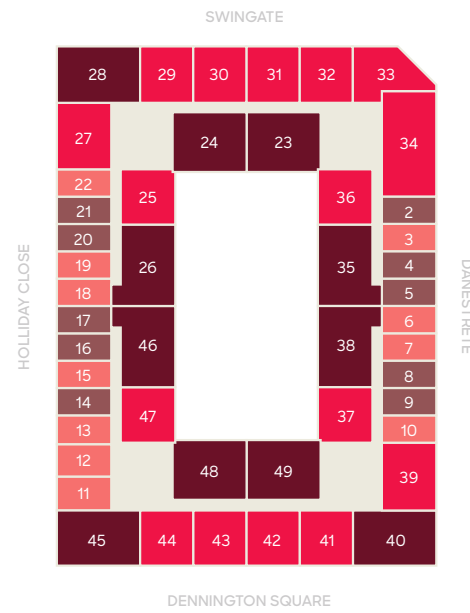
Each apartment benefits from the concierge service, resident-only rooftop terrace, central courtyard garden and lift to all floors.



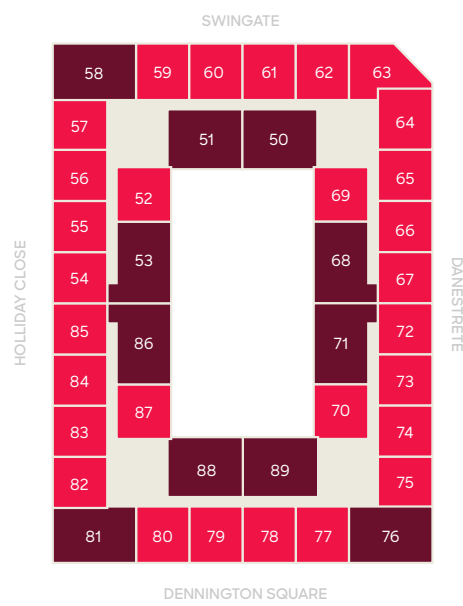
Ground Floor



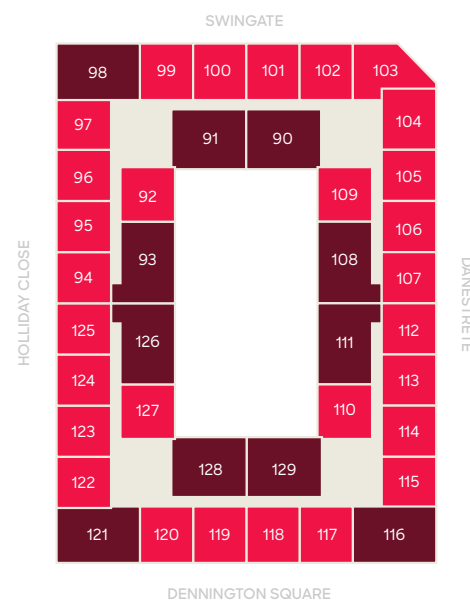
1st Floor



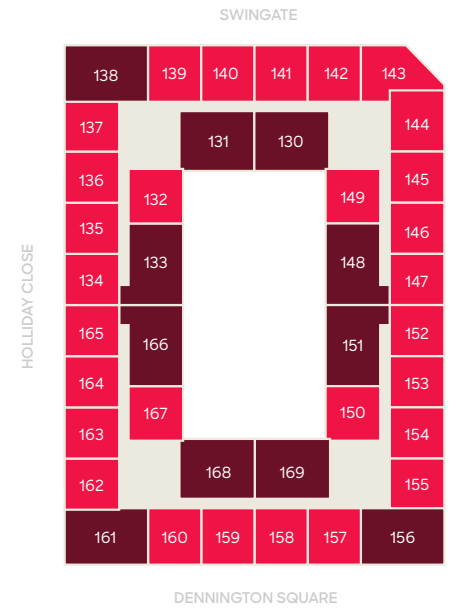
2nd Floor



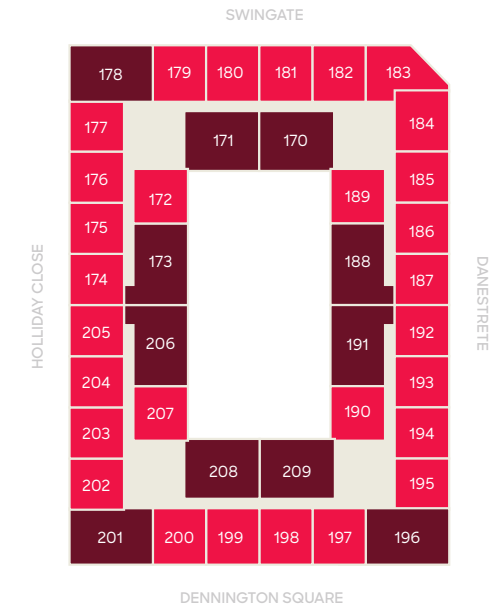
3rd Floor



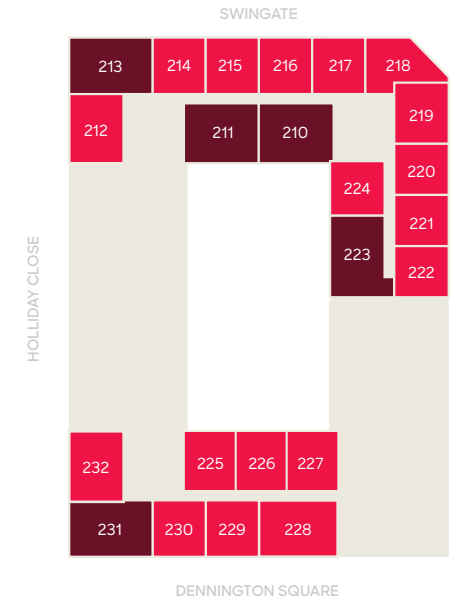
4th Floor



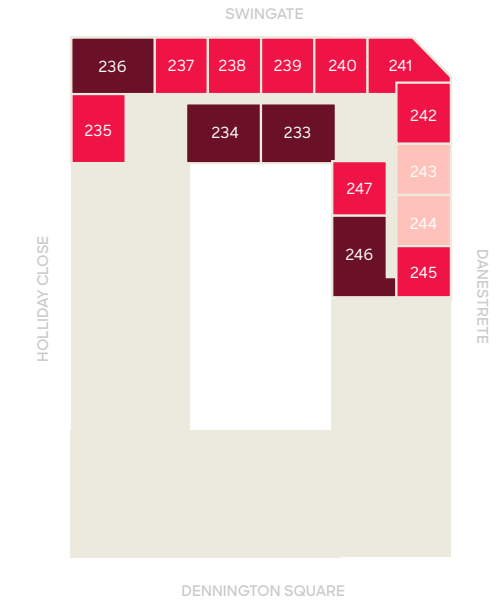
5th Floor



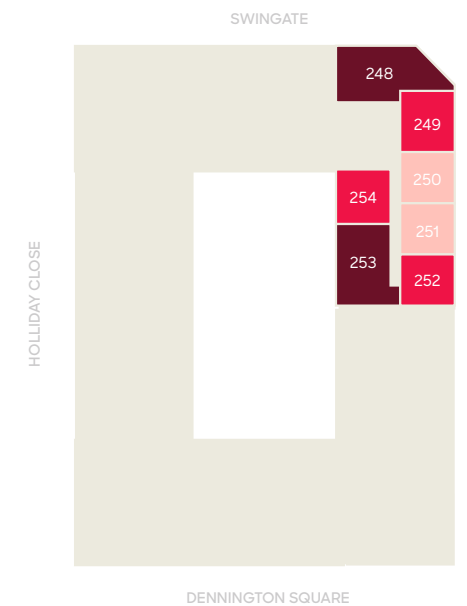
6th Floor



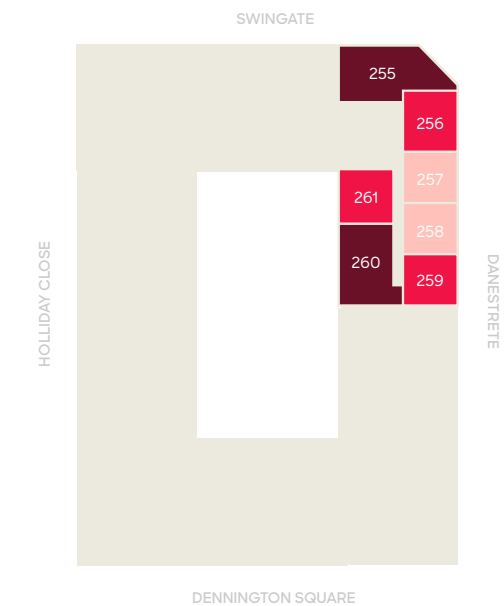
7th Floor



8th Floor



9th Floor



Studio apartment
  1 bedroom apartment
  1 bedroom duplex

2 bedroom apartment
  2 bedroom duplex

# Apartment type F0101

## Studio apartment

Total Area 405 sqft | 37.6 sqm



48

### Accommodation

Living/Kitchen	6.12m x 3.31m	20'1" x 10'10"
Bedroom	3.27m x 2.75m	10'9" x 9'0"
Balcony	2.70m x 1.48m	8'10" x 4'10"

### Apartment No.

7th floor	243 / 244
8th floor	250 / 251
9th floor	257 / 258

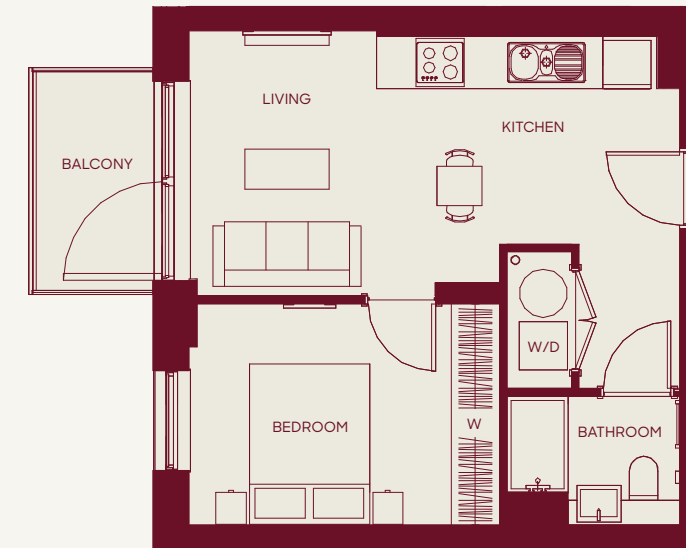
W Wardrobe W/D Washer Dryer ST Storage

Minimum measurements shown for terraces only.  
Refer to individual technical plans for exact terrace dimensions.

# Apartment type F1101

## 1 bedroom apartment

Total Area 404 sqft | 37.5 sqm



49

### Accommodation

Living/Kitchen	6.12m x 3.31m	20'1" x 10'10"
Bedroom	3.87m x 2.75m	12'8" x 9'0"
Balcony*	2.70m x 1.48m	8'10" x 4'10"

\*To apartments 57 / 72 / 73 / 74 / 75 / 97 / 112 / 113/ 114 / 115 / 137 / 152 / 153 / 154 / 155 / 177 / 185 / 186 / 187 / 192 / 193 / 194 / 195 / 220 & 221 only.

### Apartment No.

2nd floor	54 / 55 / 57 / 65 / 66 / 67 / 72 / 73 / 74 / 75 / 82 / 83 / 84 / 85
3rd floor	94 / 95 / 97 / 105 / 106 / 107 / 112 / 113 / 114 / 115 / 122 / 123 / 124 / 125
4th floor	134 / 135 / 137 / 145 / 146 / 147 / 152 / 153 / 154 / 155 / 162 / 163 / 164 / 165
5th floor	174 / 175 / 177 / 185 / 186 / 187 / 192 / 193 / 194 / 195 / 202 / 203 / 204 / 205
6th floor	220 / 221

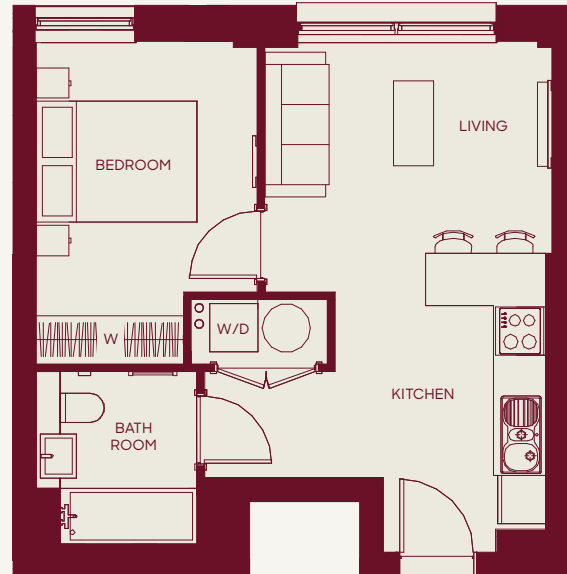
W Wardrobe W/D Washer Dryer ST Storage

Minimum measurements shown for terraces only.  
Refer to individual technical plans for exact terrace dimensions.

# Apartment type F1102

## 1 bedroom apartment

Total Area 421 sqft | 39.1 sqm



50

### Accommodation

Living/Kitchen	6.37m x 3.58m	20'11" x 11'9"
Bedroom	4.02m x 2.75m	13'2" x 9'0"

### Apartment No.

1st floor	29 / 32
2nd floor	59 / 62
3rd floor	99 / 102
4th floor	139 / 142
5th floor	179 / 182
6th floor	214 / 217
7th floor	237 / 240

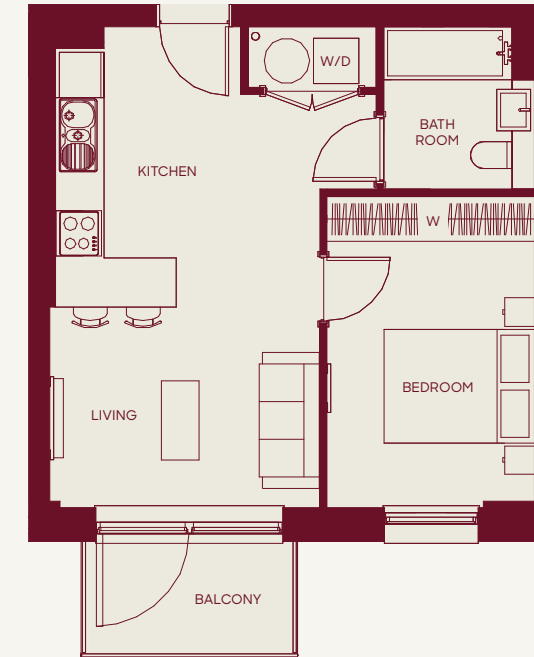
W Wardrobe W/D Washer Dryer ST Storage

Minimum measurements shown for terraces only.  
Refer to individual technical plans for exact terrace dimensions.

# Apartment type F1103

## 1 bedroom apartment

Total Area 441 sqft | 40.9 sqm



51

### Accommodation

Living/Kitchen	6.37m x 3.58m	20'11" x 11'9"
Bedroom	4.12m x 2.75m	13'6" x 9'0"
Balcony*	2.70m x 1.48m	8'10" x 4'10"

\*To apartments 78 / 118 / 158 / 198 / 79 / 80 / 119 / 120 / 159 / 160 / 199 / 200 / 229 & 230 only

### Apartment No.

1st floor	31 / 41 / 42 / 43 / 44
2nd floor	61 / 77 / 78 / 79 / 80
3rd floor	101 / 117 / 118 / 119 / 120
4th floor	141 / 157 / 158 / 159 / 160
5th floor	181 / 197 / 198 / 199 / 200
6th floor	216 / 229 / 230
7th floor	239

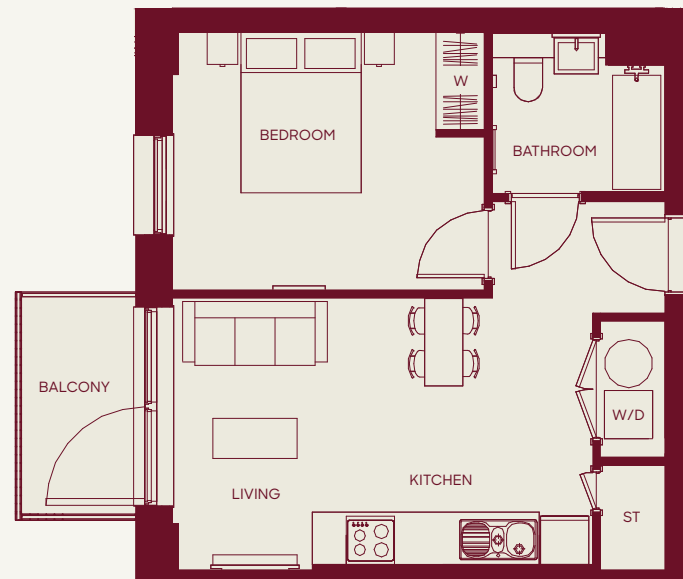
W Wardrobe W/D Washer Dryer ST Storage

Minimum measurements shown for terraces only.  
Refer to individual technical plans for exact terrace dimensions.

# Apartment type F1104

## 1 bedroom apartment

Total Area 443 sqft | 41.1 sqm



52

### Accommodation

Living/Kitchen	6.14m x 3.40m	20'2" x 11'2"
Bedroom	3.89m x 3.21m	12'9" x 10'6"
Balcony*	2.70m x 1.48m	8'10" x 4'10"

\*To apartments 254 / 261 only.

### Apartment No.

1st floor	25 / 36 / 37 / 47
2nd floor	52 / 69 / 70 / 87
3rd floor	92 / 109 / 110 / 127
4th floor	132 / 149 / 150 / 167
5th floor	172 / 189 / 190 / 207
6th floor	224
7th floor	247
8th floor	254
9th floor	261

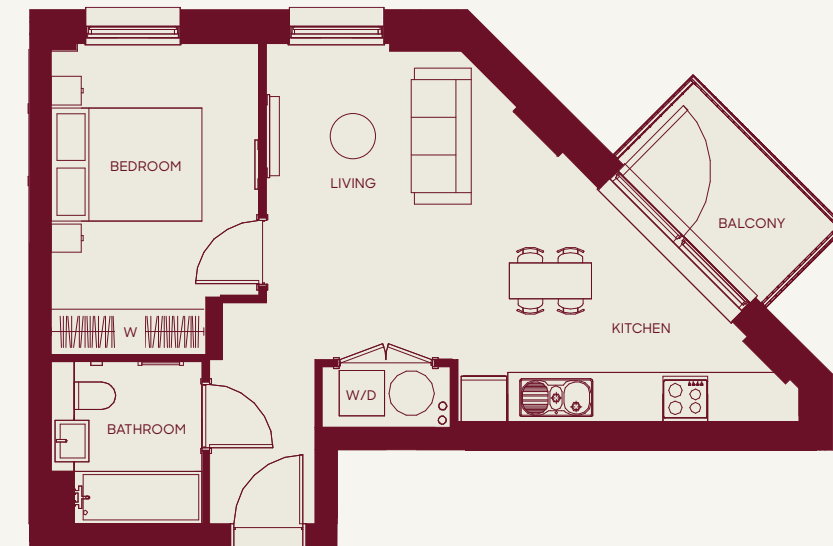
W Wardrobe W/D Washer Dryer ST Storage

Minimum measurements shown for terraces only.  
Refer to individual technical plans for exact terrace dimensions.

# Apartment type F1105

## 1 bedroom apartment

Total Area 478 sqft | 44.4 sqm



53

### Accommodation

Living/Kitchen	6.83m x 6.37m	22'5" x 20'11"
Bedroom	4.12m x 2.75m	13'6" x 9'0"
Balcony	2.70m x 1.48m	8'10" x 4'10"

### Apartment No.

1st floor	33
2nd floor	63
3rd floor	103
4th floor	143
5th floor	183
6th floor	218
7th floor	241

W Wardrobe W/D Washer Dryer ST Storage

Minimum measurements shown for terraces only.  
Refer to individual technical plans for exact terrace dimensions.

# Apartment type F1106

## 1 bedroom apartment

Total Area 490 sqft | 45.5 sqm



54

### Accommodation

Living/Kitchen	6.12m x 4.44m	20'1" x 14'7"
Bedroom	3.87m x 2.83m	12'8" x 9'3"
Balcony*	2.70m x 1.48m	8'10" x 4'10"

\*To apartments 184 / 219 / 242 / 249 & 256 only.

### Apartment No.

2nd floor	64
3rd floor	104
4th floor	144
5th floor	184
6th floor	219
7th floor	242
8th floor	249
9th floor	256

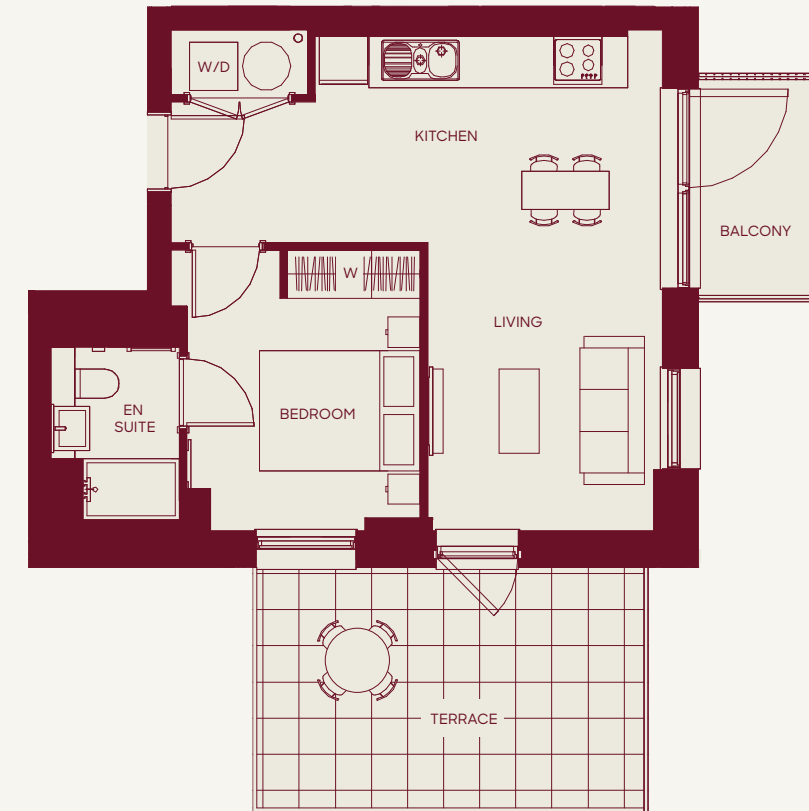
W Wardrobe W/D Washer Dryer ST Storage

Minimum measurements shown for terraces only.  
Refer to individual technical plans for exact terrace dimensions.

# Apartment type F1107

## 1 bedroom apartment

Total Area 454 sqft | 42.1 sqm



55

### Accommodation

Living/Kitchen	6.24m x 6.12m	20'6" x 20'1"
Bedroom	3.50m x 2.90m	11'6" x 9'6"
Balcony	2.70m x 1.48m	8'10" x 4'10"
Terrace**	5.06m x 3.70m	16'2" x 12'2"

\*\*To apartment 222 only.

### Apartment No.

6th floor	222
7th floor	245
8th floor	252
9th floor	259

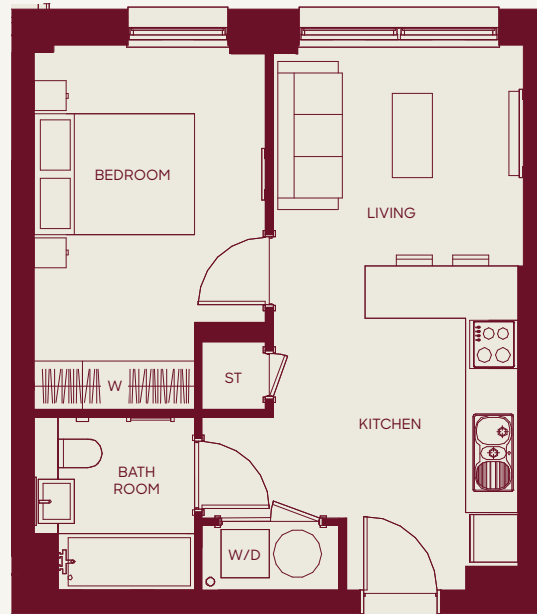
W Wardrobe W/D Washer Dryer ST Storage

Minimum measurements shown for terraces only.  
Refer to individual technical plans for exact terrace dimensions.

# Apartment type F1108

## 1 bedroom apartment

Total Area 445 sqft | 41.4 sqm



56

### Accommodation

Living/Kitchen	6.79m x 3.12m	22'3" x 10'3"
Bedroom	4.54m x 2.89m	14'11" x 9'6"

### Apartment No.

6th floor 225

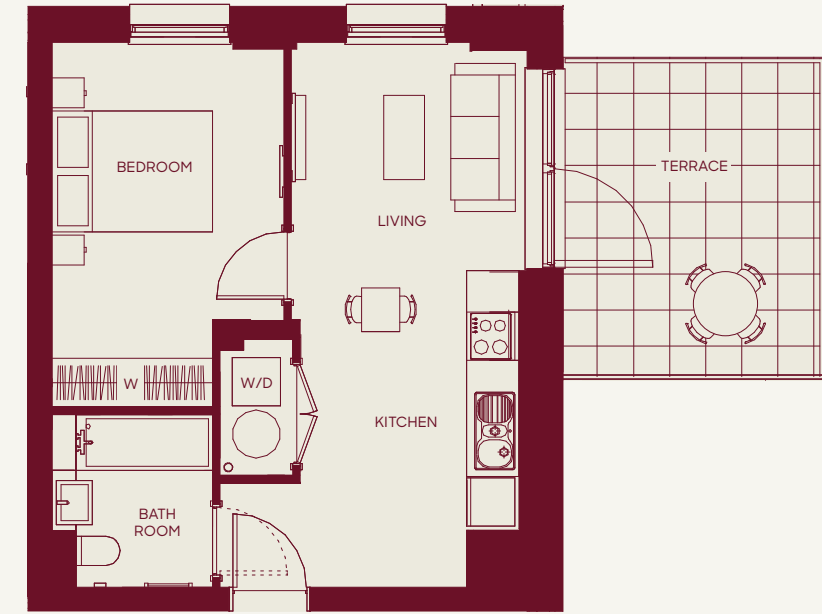
W Wardrobe W/D Washer Dryer ST Storage

Minimum measurements shown for terraces only.  
Refer to individual technical plans for exact terrace dimensions.

# Apartment type F1109

## 1 bedroom apartment

Total Area 433 sqft | 40.3 sqm



57

### Accommodation

Living/Kitchen	6.78m x 2.94m	22'3" x 9'8"
Bedroom	4.54m x 2.89m	14'11" x 9'6"
Terrace	4.55m x 3.83m	14'11" x 12'7"

### Apartment No.

6th floor 227

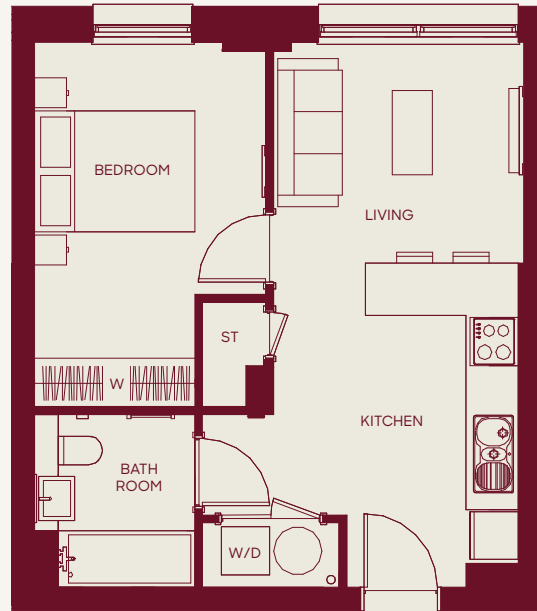
W Wardrobe W/D Washer Dryer ST Storage

Minimum measurements shown for terraces only.  
Refer to individual technical plans for exact terrace dimensions.

# Apartment type F1110

## 1 bedroom apartment

Total Area 445 sqft | 41.4 sqm



58

### Accommodation

Living/Kitchen	6.78m x 3.12m	22'3" x 10'3"
Bedroom	4.54m x 2.89m	14'11" x 9'6"

### Apartment No.

6th floor	226
-----------	-----

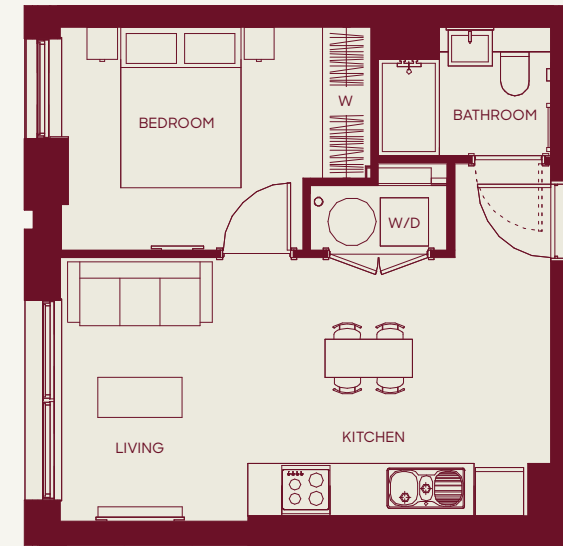
W Wardrobe W/D Washer Dryer ST Storage

Minimum measurements shown for terraces only.  
Refer to individual technical plans for exact terrace dimensions.

# Apartment type F1111

## 1 bedroom apartment

Total Area 405 sqft | 37.6 sqm



59

### Accommodation

Living/Kitchen	6.12m x 3.31m	20'1" x 10'10"
Bedroom	3.84m x 2.77m	12'7" x 9'1"

### Apartment No.

2nd floor	56
3rd floor	96
4th floor	136
5th floor	176

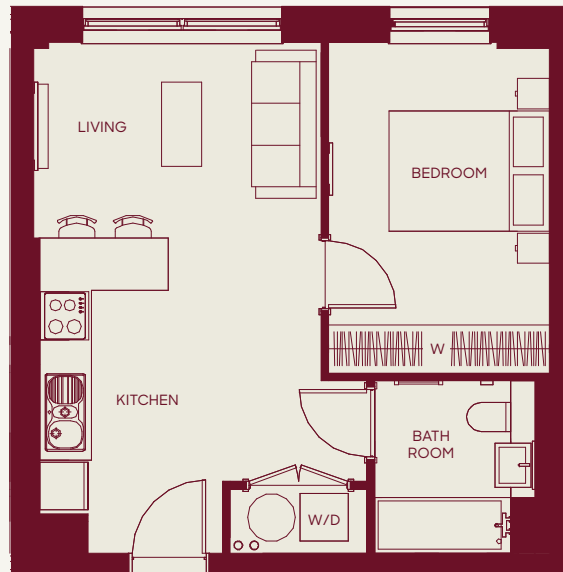
W Wardrobe W/D Washer Dryer ST Storage

Minimum measurements shown for terraces only.  
Refer to individual technical plans for exact terrace dimensions.

# Apartment type F1112

## 1 bedroom apartment

Total Area 441 sqft | 40.9 sqm



60

Accommodation		
Living/Kitchen	6.37m x 3.58m	20'11" x 11'9"
Bedroom	4.12m x 2.75m	13'6" x 9'0"

Apartment No.	
1st floor	30
2nd floor	60
3rd floor	100
4th floor	140
5th floor	180
6th floor	215
7th floor	238

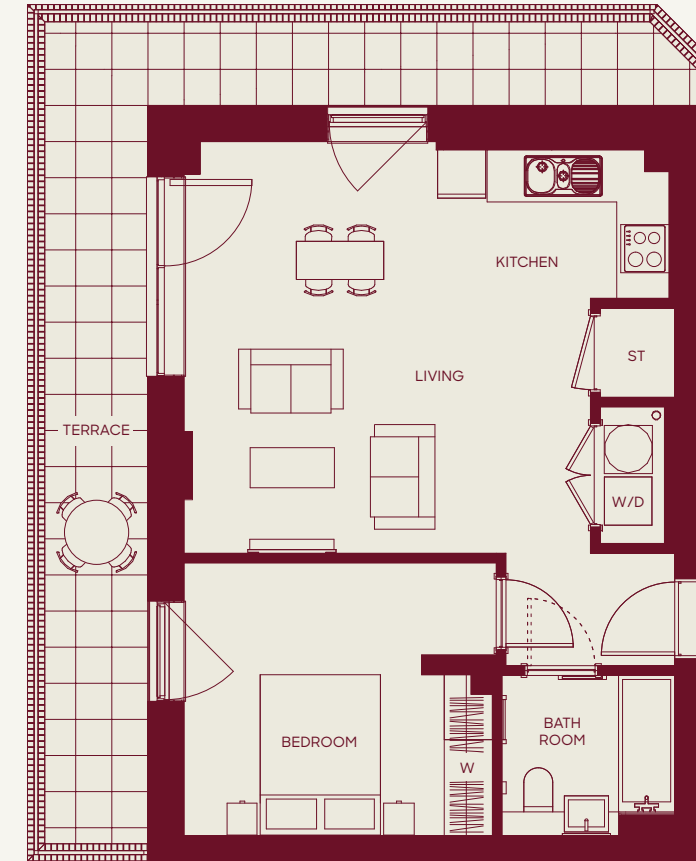
W Wardrobe W/D Washer Dryer ST Storage

Minimum measurements shown for terraces only.  
Refer to individual technical plans for exact terrace dimensions.

# Apartment type F1201

## 1 bedroom apartment

Total Area 570 sqft | 53.0 sqm



61

Accommodation		
Living/Kitchen	5.13m x 6.04m	16'10" x 19'10"
Bedroom	3.84m x 3.41m	12'7" x 11'2"
Terrace	17.1m x 1.29m	56'1" x 4'3"

Apartment No.	
Ground floor	1

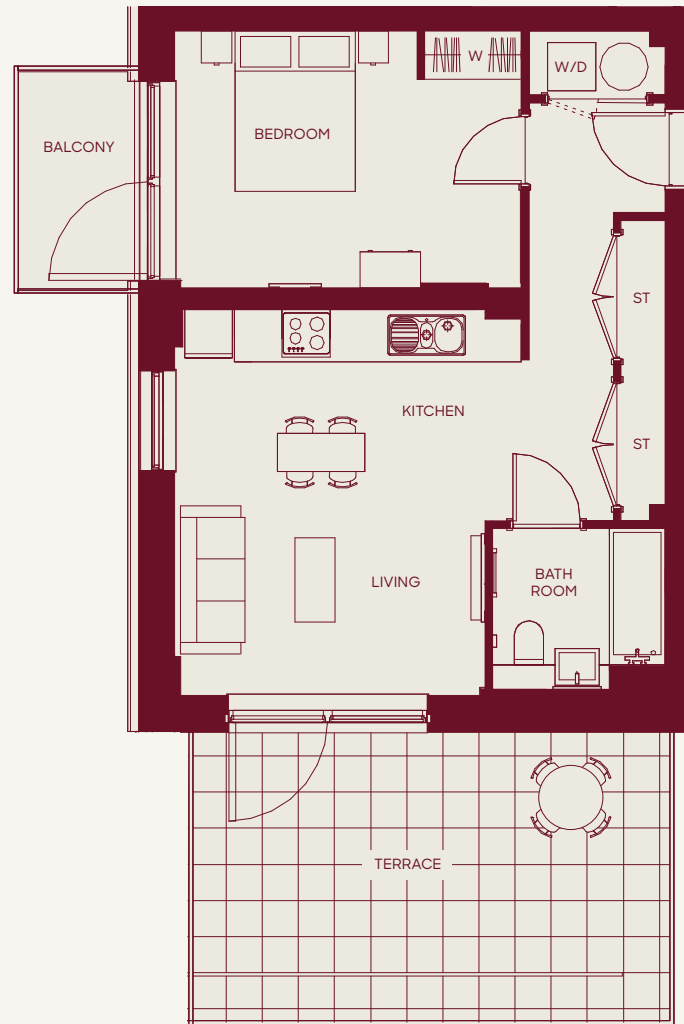
W Wardrobe W/D Washer Dryer ST Storage

Minimum measurements shown for terraces only.  
Refer to individual technical plans for exact terrace dimensions.

# Apartment type F1202

## 1 bedroom apartment

Total Area 543 sqft | 50.4 sqm



62

Accommodation		
Living/Kitchen	5.47m x 4.80m	17'11" x 15'9"
Bedroom	3.87m x 3.32m	12'8" x 10'11"
Balcony*	2.70m x 1.48m	8'10" x 4'10"
Terrace**	5.94m x 3.61m	19'6" x 11'10"

Apartment No.	
1st floor	27
6th floor	212
7th floor	235

\*To apartments 212 & 235 only.  
\*\*To apartment 212 only.

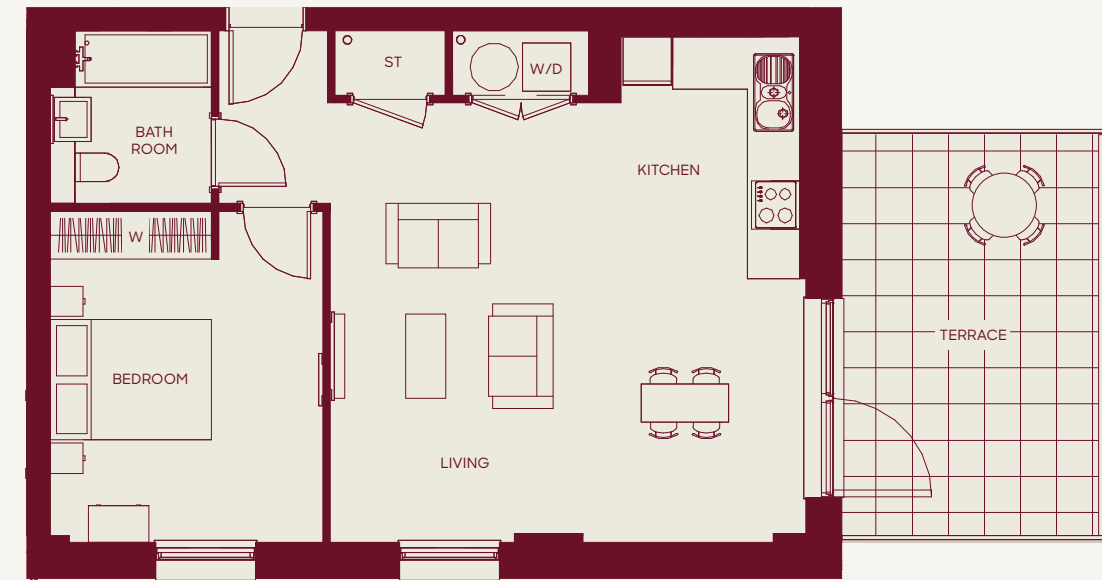
W Wardrobe W/D Washer Dryer ST Storage

Minimum measurements shown for terraces only.  
Refer to individual technical plans for exact terrace dimensions.

# Apartment type F1203

## 1 bedroom apartment

Total Area 647 sqft | 60.1 sqm



63

Accommodation		
Living/Kitchen	6.30m x 5.92m	20'8" x 19'5"
Bedroom	4.12m x 3.39m	13'6" x 11'2"
Terrace	5.00m x 3.83m	16'5" x 12'7"

Apartment No.	
6th floor	228

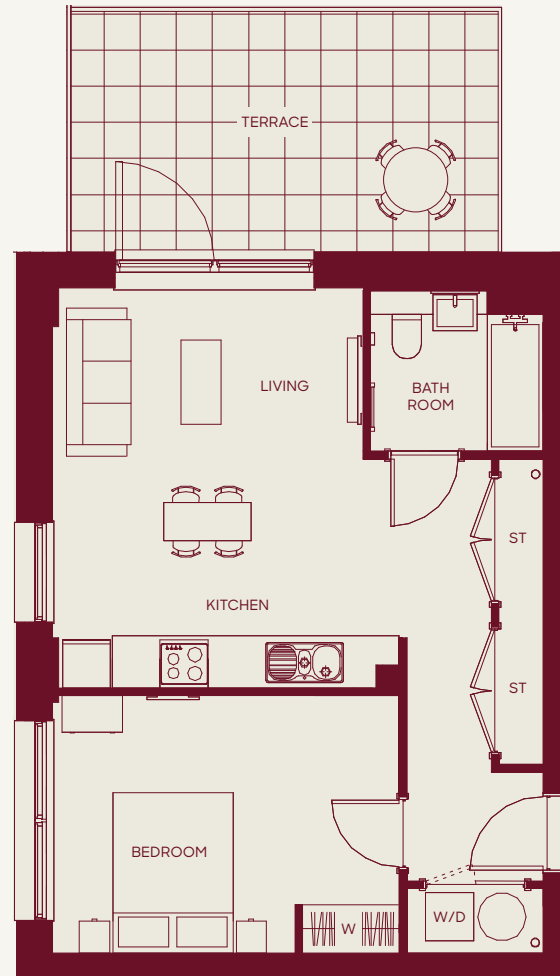
W Wardrobe W/D Washer Dryer ST Storage

Minimum measurements shown for terraces only.  
Refer to individual technical plans for exact terrace dimensions.

# Apartment type F1204

## 1 bedroom apartment

Total Area 545 sqft | 50.6 sqm



Accommodation		
Living/Kitchen	5.47m x 4.98m	17'11" x 16'4"
Bedroom	3.87m x 3.20m	12'8" x 10'6"
Terrace	5.95m x 3.63m	19'6" x 11'11"

Apartment No.	
6th floor	232

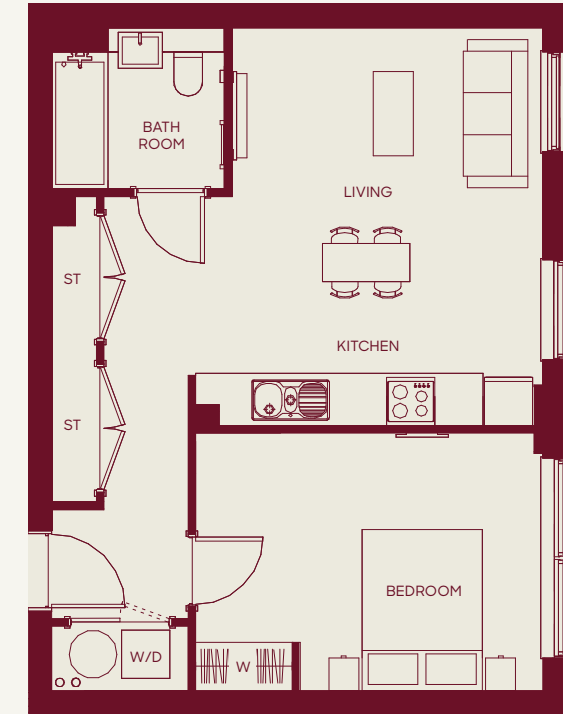
W Wardrobe W/D Washer Dryer ST Storage

Minimum measurements shown for terraces only.  
Refer to individual technical plans for exact terrace dimensions.

# Apartment type F1205

## 1 bedroom apartment

Total Area 542 sqft | 50.3 sqm



Accommodation		
Living/Kitchen	5.22m x 4.95m	17'2" x 16'3"
Bedroom	3.87m x 3.20m	12'8" x 10'6"

Apartment No.	
1st floor	39

W Wardrobe W/D Washer Dryer ST Storage

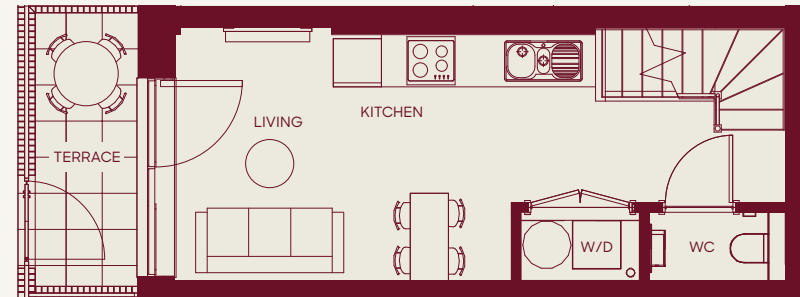
Minimum measurements shown for terraces only.  
Refer to individual technical plans for exact terrace dimensions.

# Apartment type D1101

## 1 bedroom duplex

Total Area 466 sqft | 43.3 sqm

Ground Floor Level



Upper Floor Level



### Accommodation

Living/Kitchen	7.62m x 3.53m	25'0" x 11'7"
Bedroom	4.42m x 3.54m	14'6" x 11'7"
Terrace	3.16m x 1.29m	10'4" x 4'3"

### Apartment No.

Ground floor 13 / 15 / 18 / 19 / 22

W Wardrobe W/D Washer Dryer ST Storage

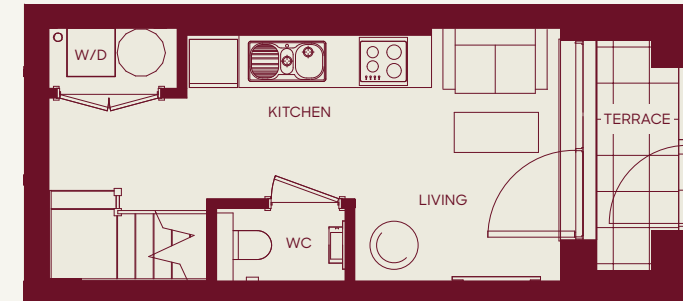
Minimum measurements shown for terraces only.  
Refer to individual technical plans for exact terrace dimensions.

# Apartment type D1102

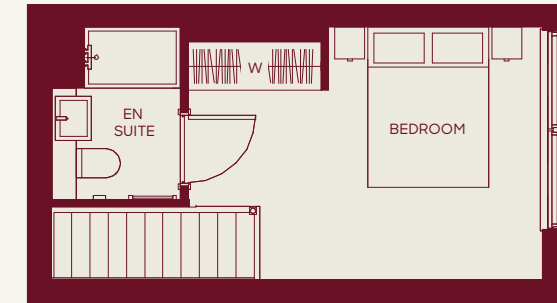
## 1 bedroom duplex

Total Area 424 sqft | 39.4 sqm

Ground Floor Level



Upper Floor Level



### Accommodation

Living/Kitchen	6.38m x 3.12m	20'11" x 10'3"
Bedroom	4.41m x 3.15m	14'6" x 10'4"
Terrace	2.87m x 1.00m	9'5" x 3'3"

### Apartment No.

Ground floor 3 / 6 / 7 / 10

W Wardrobe W/D Washer Dryer ST Storage

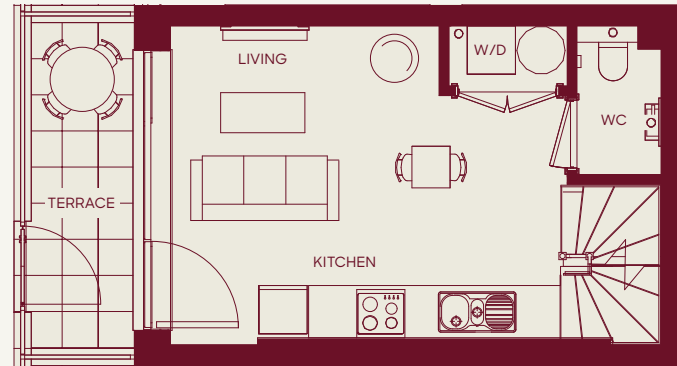
Minimum measurements shown for terraces only.  
Refer to individual technical plans for exact terrace dimensions.

# Apartment type D1103

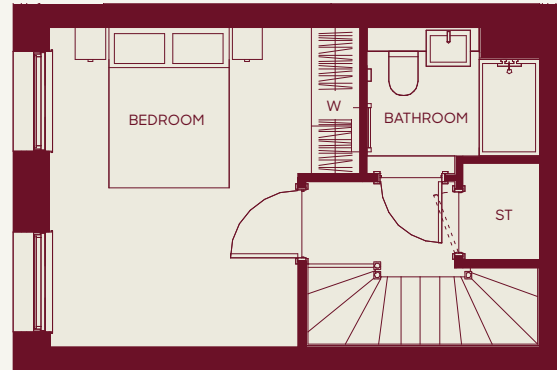
## 1 bedroom duplex

Total Area 523 sqft | 48.5 sqm

Ground Floor Level



Upper Floor Level



### Accommodation

Living/Kitchen	6.12m x 3.98m	20'1" x 13'1"
Bedroom	3.98m x 3.87m	13'1" x 12'8"
Terrace	4.06m x 1.29m	13'4" x 4'3"

### Apartment No.

Ground floor	11 / 12
--------------	---------

W Wardrobe W/D Washer Dryer ST Storage

Minimum measurements shown for terraces only.  
Refer to individual technical plans for exact terrace dimensions.

# Apartment type F2301

## 2 bedroom apartment

Total Area 657 sqft | 61.1 sqm



### Accommodation

Living/Kitchen	6.71m x 2.90m	22'0" x 9'6"
Bedroom 1	5.09m x 3.05m	16'8" x 10'0"
Bedroom 2	4.53m x 2.87m	14'10" x 9'5"

### Apartment No.

1st floor	23 / 24
2nd floor	50 / 51 / 88 / 89
3rd floor	90 / 91 / 128 / 129
4th floor	130 / 131 / 168 / 169
5th floor	170 / 171 / 208 / 209
6th floor	210 / 211
7th floor	233 / 234

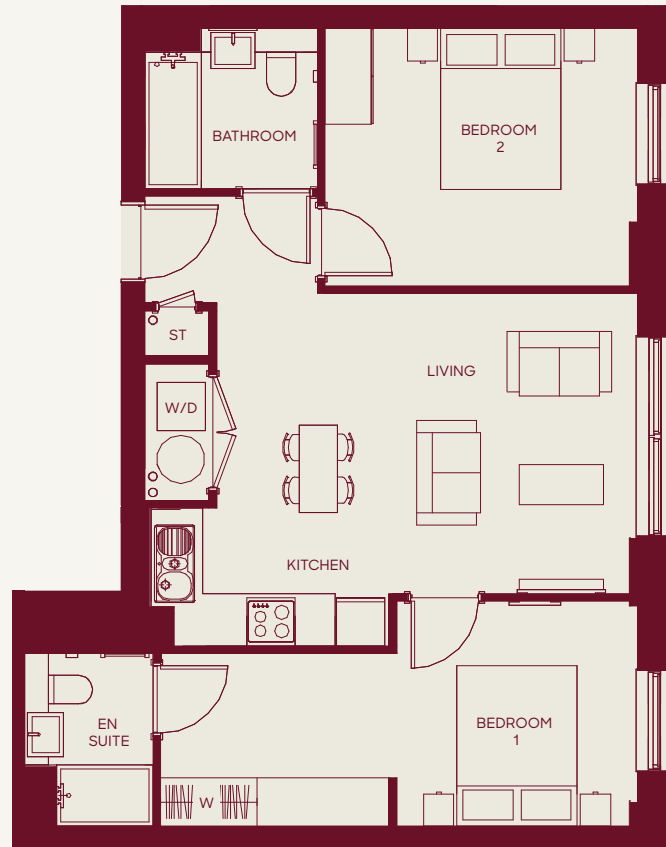
W Wardrobe W/D Washer Dryer ST Storage

Minimum measurements shown for terraces only.  
Refer to individual technical plans for exact terrace dimensions.

# Apartment type F2302

## 2 bedroom apartment

Total Area 699 sqft | 64.9 sqm



70

### Accommodation

Living/Kitchen	5.60m x 5.23m	18'5" x 17'2"
Bedroom 1	5.93m x 2.80m	19'6" x 9'2"
Bedroom 2	3.88m x 3.21m	12'9" x 10'6"

### Apartment No.

1st floor	26 / 35 / 38 / 46
2nd floor	53 / 68 / 71 / 86
3rd floor	93 / 108 / 111 / 126
4th floor	133 / 148 / 151 / 166
5th floor	173 / 191 / 206

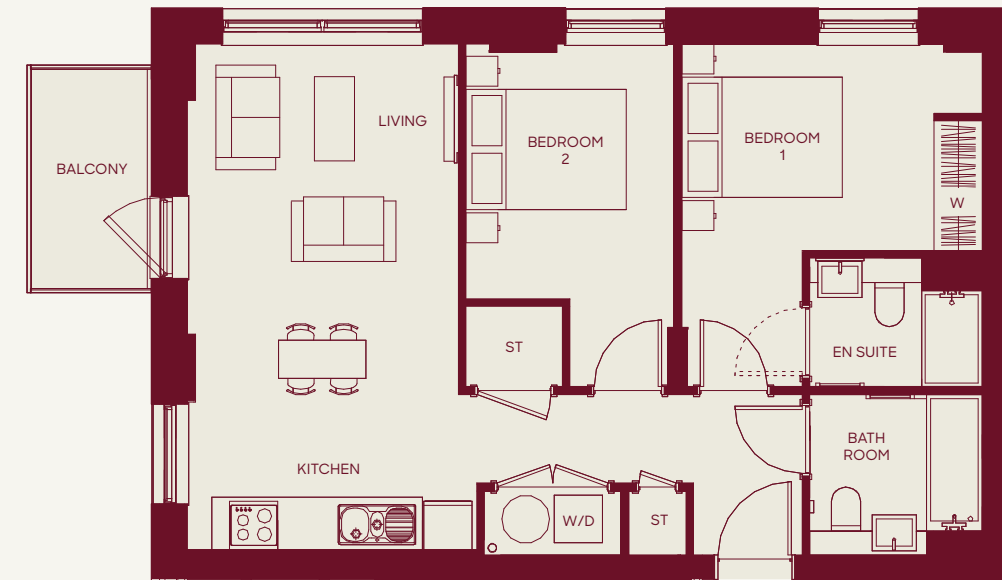
W Wardrobe W/D Washer Dryer ST Storage

Minimum measurements shown for terraces only.  
Refer to individual technical plans for exact terrace dimensions.

# Apartment type F2303

## 2 bedroom apartment

Total Area 679 sqft | 63.1 sqm



71

### Accommodation

Living/Kitchen	6.30m x 3.38m	20'8" x 11'1"
Bedroom 1	4.27m x 3.75m	14'0" x 12'4"
Bedroom 2	4.27m x 2.59m	14'0" x 8'6"
Balcony*	2.70m x 1.48m	8'10" x 4'10"

\*To apartments 58 / 76 / 81 / 98 / 116 / 121 / 138 / 178 / 156 / 161 / 196 / 201 / 213 / 231 / 236 only.

### Apartment No.

1st floor	28 / 40 / 45
2nd floor	58 / 76 / 81
3rd floor	98 / 116 / 121
4th floor	138 / 156 / 161
5th floor	178 / 196 / 201
6th floor	213 / 231
7th floor	236

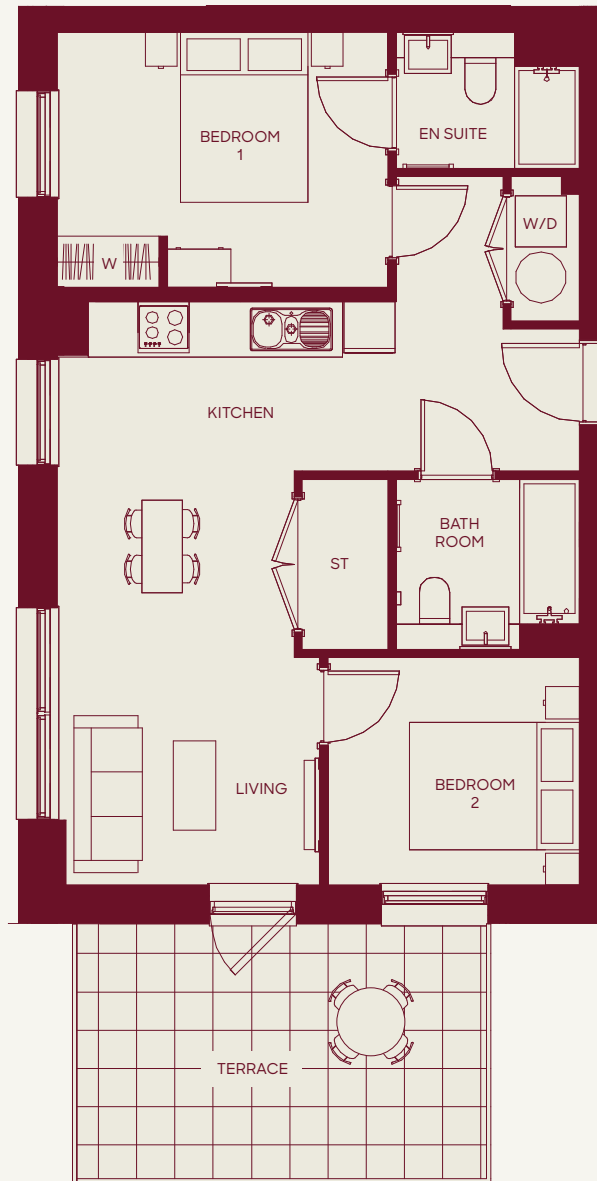
W Wardrobe W/D Washer Dryer ST Storage

Minimum measurements shown for terraces only.  
Refer to individual technical plans for exact terrace dimensions.

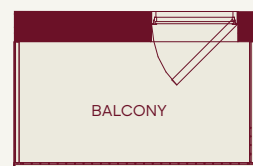
# Apartment type F2304

## 2 bedroom apartment

Total Area 665 sqft | 61.7 sqm



**Balcony Option**  
to 246 / 253 / 260



72

Accommodation		
Living/Kitchen	6.86m x 6.12m	22'6" x 20'1"
Bedroom 1	3.89m x 3.00m	12'9" x 9'10"
Bedroom 2	2.96m x 2.68m	9'9" x 8'10"
Balcony*	2.70m x 1.48m	8'10" x 4'10"
Terrace**	5.06m x 3.70m	16'7" x 12'2"

\*To apartments 246 / 253 / 260 only.  
\*\*To apartments 223 only.

Apartment No.	
6th floor	223
7th floor	246
8th floor	253
9th floor	260

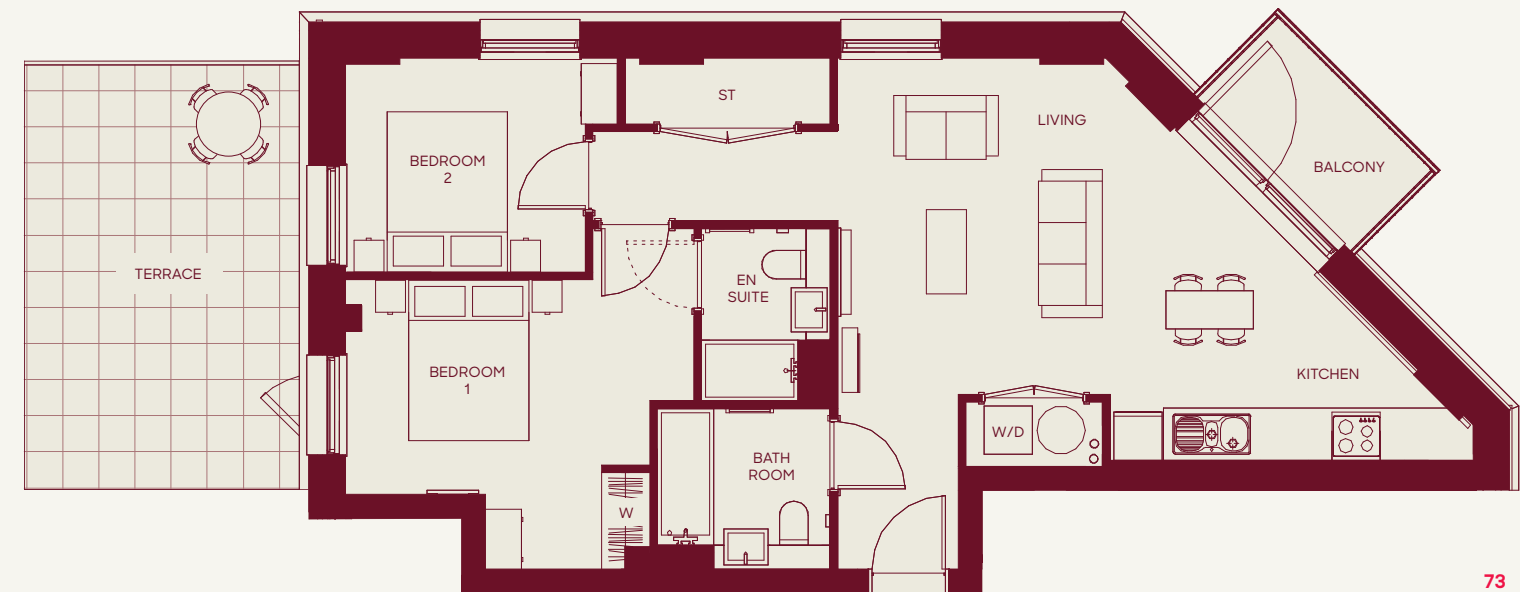
W Wardrobe W/D Washer Dryer ST Storage

Minimum measurements shown for terraces only.  
Refer to individual technical plans for exact terrace dimensions.

# Apartment type F2305

## 2 bedroom apartment

Total Area 743 sqft | 69.1 sqm



73

Accommodation		
Living/Kitchen	7.11m x 6.37m	23'4" x 20'11"
Bedroom 1	4.34m x 3.61m	14'3" x 11'10"
Bedroom 2	2.99m x 2.67m	9'10" x 8'9"
Balcony	2.70m x 1.48m	8'10" x 4'10"
Terrace**	5.51m x 4.18m	18'1" x 13'9"

\*\*To apartment 248 only.

Apartment No.	
8th floor	248
9th floor	255

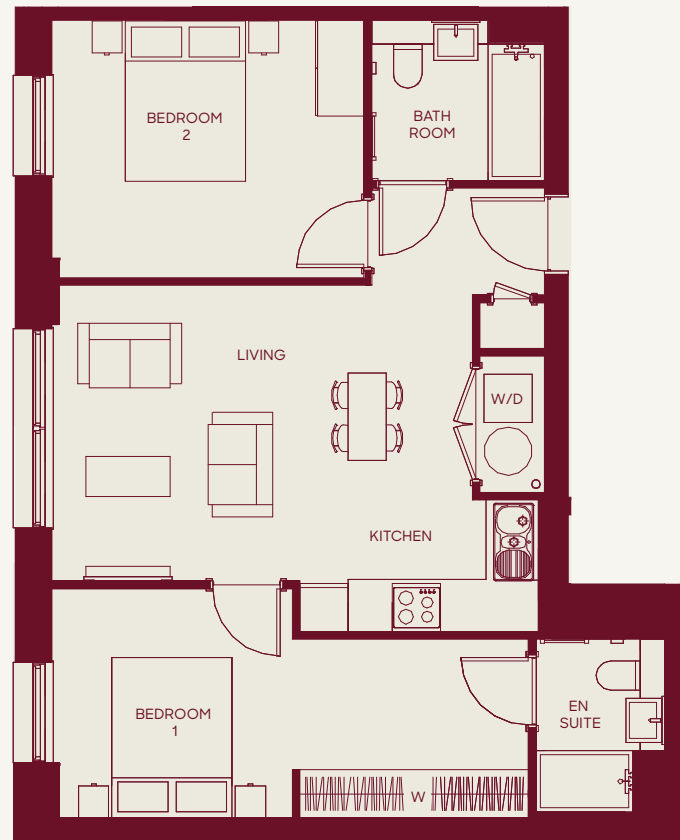
W Wardrobe W/D Washer Dryer ST Storage

Minimum measurements shown for terraces only.  
Refer to individual technical plans for exact terrace dimensions.

# Apartment type F2306

## 2 bedroom apartment

Total Area 699 sqft | 64.9 sqm



74

Accommodation		
Living/Kitchen	6.14m x 5.52m	20'2" x 18'1"
Bedroom 1	5.94m x 2.85m	19'6" x 9'4"
Bedroom 2	3.89m x 3.21m	12'9" x 10'6"

Apartment No.	
5th floor	188

W Wardrobe W/D Washer Dryer ST Storage

Minimum measurements shown for terraces only.  
Refer to individual technical plans for exact terrace dimensions.

# Apartment type F2307

## 2 bedroom apartment

Total Area 647 or 658 sqft | 60.1 or 61.1 sqm



75

Accommodation		
Living/Kitchen	6.71m x 2.90m	22'0" x 9'6"
Bedroom 1	5.09m x 3.05m	16'8" x 10'0"
Bedroom 2	4.54m x 2.87m	14'11" x 9'5"

Apartment No.	
1st floor	48 / 49

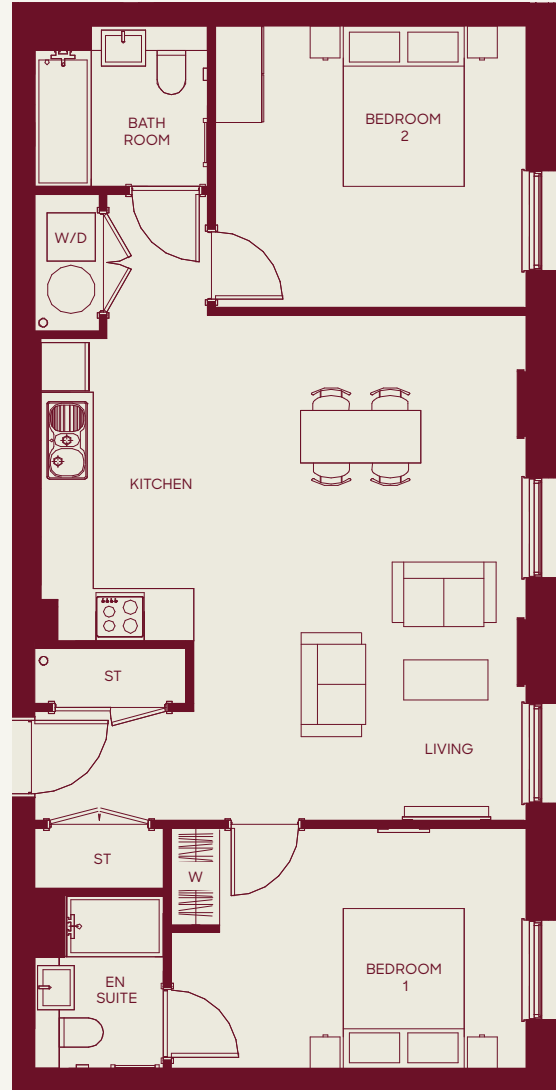
W Wardrobe W/D Washer Dryer ST Storage

Minimum measurements shown for terraces only.  
Refer to individual technical plans for exact terrace dimensions.

# Apartment type F2401

## 2 bedroom apartment

Total Area 853 sqft | 79.3 sqm



Accommodation		
Living/Kitchen	6.30m x 6.04m	20'8" x 19'10"
Bedroom 1	4.42m x 2.99m	14'6" x 9'10"
Bedroom 2	3.87m x 3.51m	12'8" x 11'6"

Apartment No.	
1st floor	34

W Wardrobe W/D Washer Dryer ST Storage

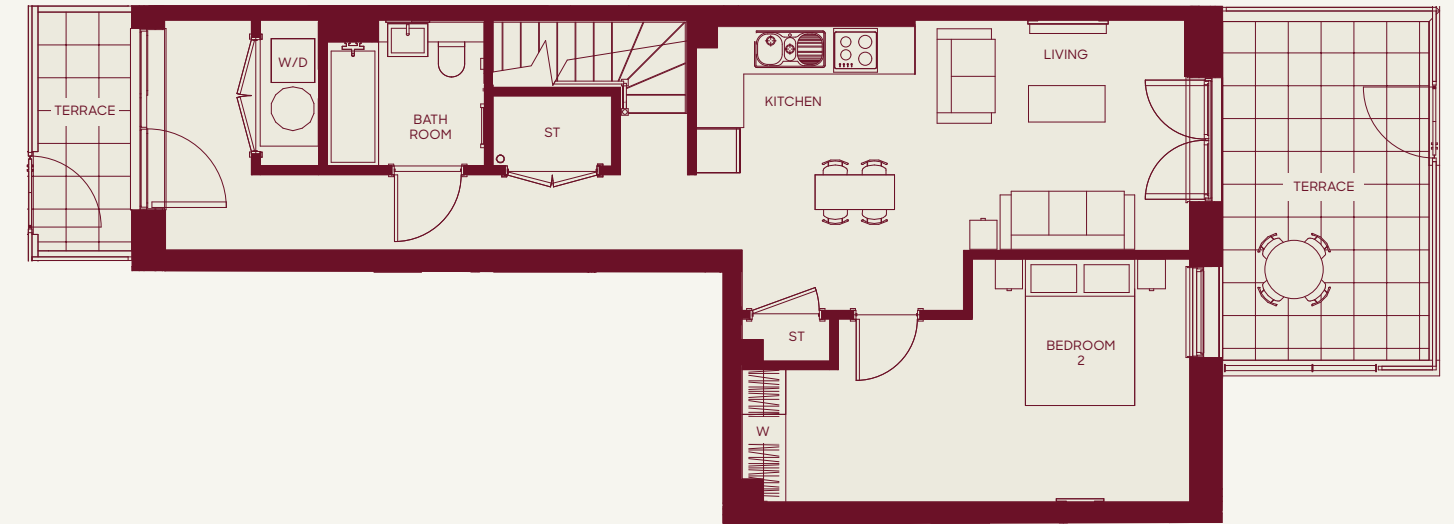
Minimum measurements shown for terraces only.  
Refer to individual technical plans for exact terrace dimensions.

# Apartment type D2401

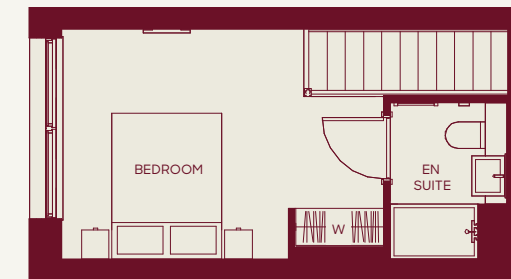
## 2 bedroom duplex

Total Area 908 sqft | 84.5 sqm

Ground Floor Level



Upper Floor Level



Accommodation		
Living/Kitchen	6.76m x 3.98m	22'2" x 13'1"
Bedroom 1	4.42m x 3.54m	14'6" x 11'7"
Bedroom 2	6.14m x 3.30m	20'2" x 10'10"
Terrace 1	3.16m x 1.29m	10'4" x 4'3"
Terrace 2	6.52m x 2.83m	20'6" x 9'3"

Apartment No.	
Ground floor	14 / 16 / 17 / 20 / 21

W Wardrobe W/D Washer Dryer ST Storage

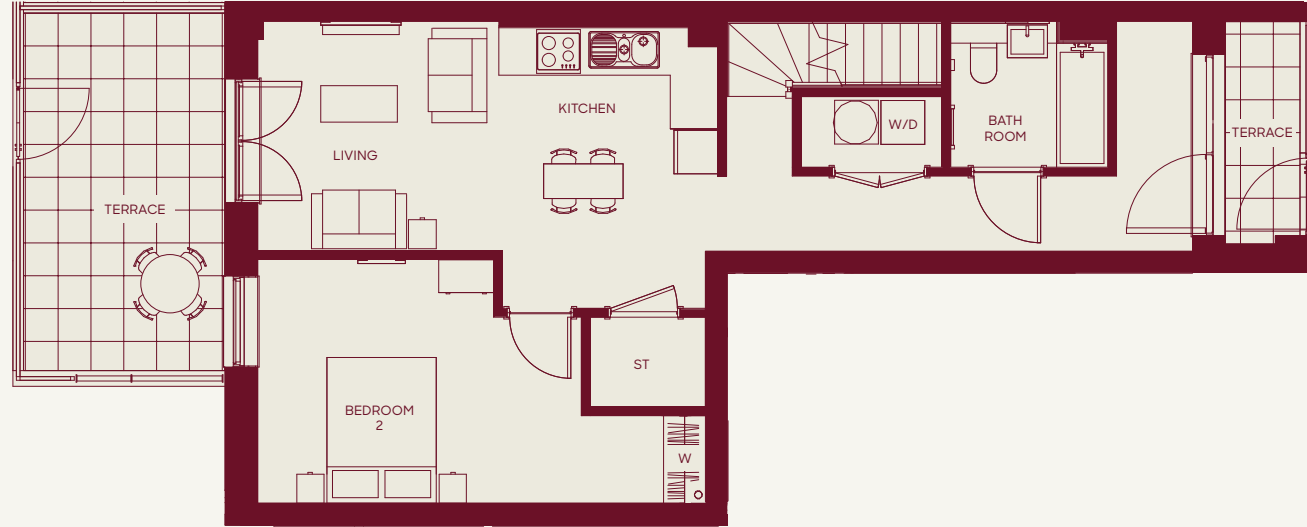
Minimum measurements shown for terraces only.  
Refer to individual technical plans for exact terrace dimensions.

# Apartment type D2402

## 2 bedroom duplex

Total Area 865, 871 or 876 sqft | 80.3, 80.4 or 80.9 sqm

Ground Floor Level



Upper Floor Level



### Accommodation

Living/Kitchen	6.31m x 3.85m	20'8" x 12'8"
Bedroom 1	4.42m x 3.15m	14'6" x 10'4"
Bedroom 2	5.84m x 3.34m	19'2" x 10'11"
Terrace 1	4.90m x 2.77m	16'1" x 9'1"
Terrace 2*	2.87m x 1.00m	9'5" x 3'3"

\*To apartment 4 / 5 / 8 & 9 only.

### Apartment No.

Ground floor 2 / 4 / 5 / 8 / 9

W Wardrobe W/D Washer Dryer ST Storage

Minimum measurements shown for terraces only.  
Refer to individual technical plans for exact terrace dimensions.



CGIs are indicative only.

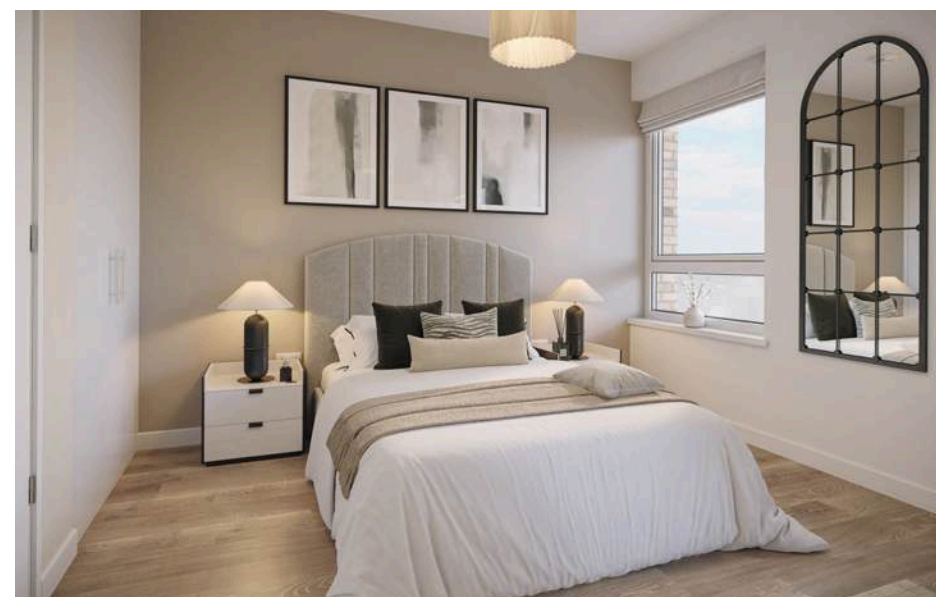
# Sales enquiries.

For more information  
[claxtonhouse-stevenage.co.uk](http://claxtonhouse-stevenage.co.uk)

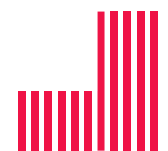
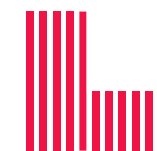
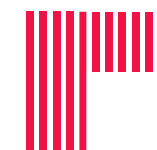


**Disclaimer**  
Whilst every care has been taken to ensure accuracy these particulars do not constitute part of any offer or contract and the right to change plans, specifications and materials is reserved. All measurements are given as a guide only. Purchasers are advised to check plot specific dimensions and specifications prior to reservation. No liability can be accepted for any errors arising there from. Development images are indicative and may vary. Specifications for this development may not include fixtures, fittings and furnishings shown in the photographs and illustrations. Features and finishes are shown for illustrative purposes only and are not intended to form part of any contract or warranty. No responsibility is taken for any other error, omission, or mis-statements in these particulars. Neither the vendor nor its agents make or give, whether in these particulars, during the negotiations or otherwise, any representation or warranty in relation to this property.

Designed by Fresh Lemon. March 2026.



Join Stevenage's  
most exciting new  
community.



**CLAXTONHOUSE**

[claxtonhouse-stevenage.co.uk](http://claxtonhouse-stevenage.co.uk)