

# PILGRIM HOUSE

Billericay



Computer generated imagery is indicative only.

# P



---

➤ **ABOUT** **03**

---

➤ **LOCATION** **04**

---

➤ **MAP** **05**

---

➤ **CONNECTIONS** **06**

---

➤ **INTERIORS** **07**

---

---

➤ **SPECIFICATION** **10**

---

➤ **GROUND FLOOR PLAN** **11**

---

➤ **FIRST FLOOR PLAN** **12**

---

➤ **SECOND FLOOR PLAN** **13**

---

➤ **SALE INFO** **14**

---

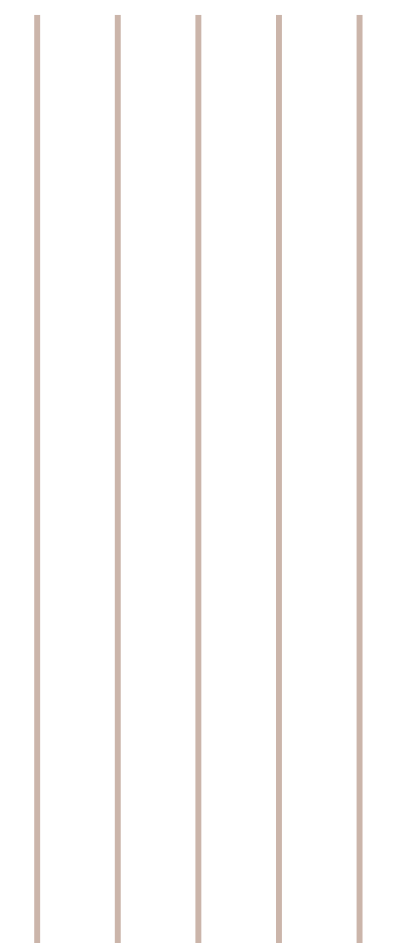




Computer generated imagery is indicative only.

# A COLLECTION OF MODERN, BEAUTIFULLY DESIGNED STARTER SUITES, ONE & TWO BEDROOM APARTMENTS.

Nestled just moments away from Billericay's vibrant high street, these homes offer the perfect blend of style and comfort. With a high quality specification throughout, bespoke designed kitchens, and smart home technology, these apartments are the perfect place to call home.





# AT HOME IN BILLERICAY

**Situated on a bustling high street with convenient access to nearby parks and the train station, Pilgrim House exemplifies the best of Billericay living.**

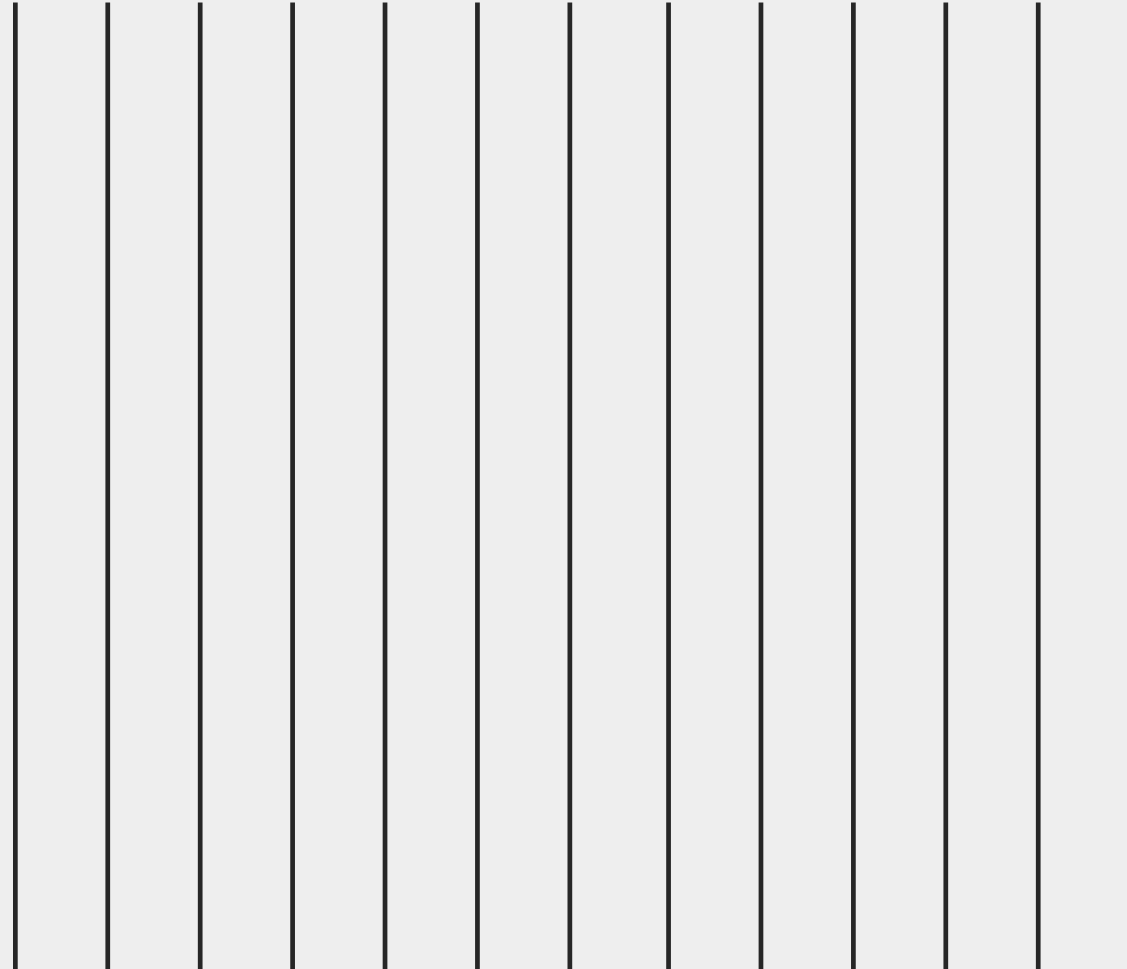
Just steps from your front door, you'll discover a fantastic range of restaurants, cafés, and one of the area's favourite local pubs, alongside a variety of shops.

Whether dining out or grabbing a drink, everything you need is within reach, from laid-back all-day

spots to high-end restaurants. Meet friends for brunch at Gail's, enjoy authentic Thai dishes at the Giggling Squid, or elevate your evening with seafood at Felix and creative tapas at Pasha.

For entertainment, head to Hackers for a unique mini-golf experience or visit Players Lounge for comedy, club nights, and live music.

With all this nearby, Billericay's well-connected train station is just a short walk away, offering a quick 34-minute journey into central London.



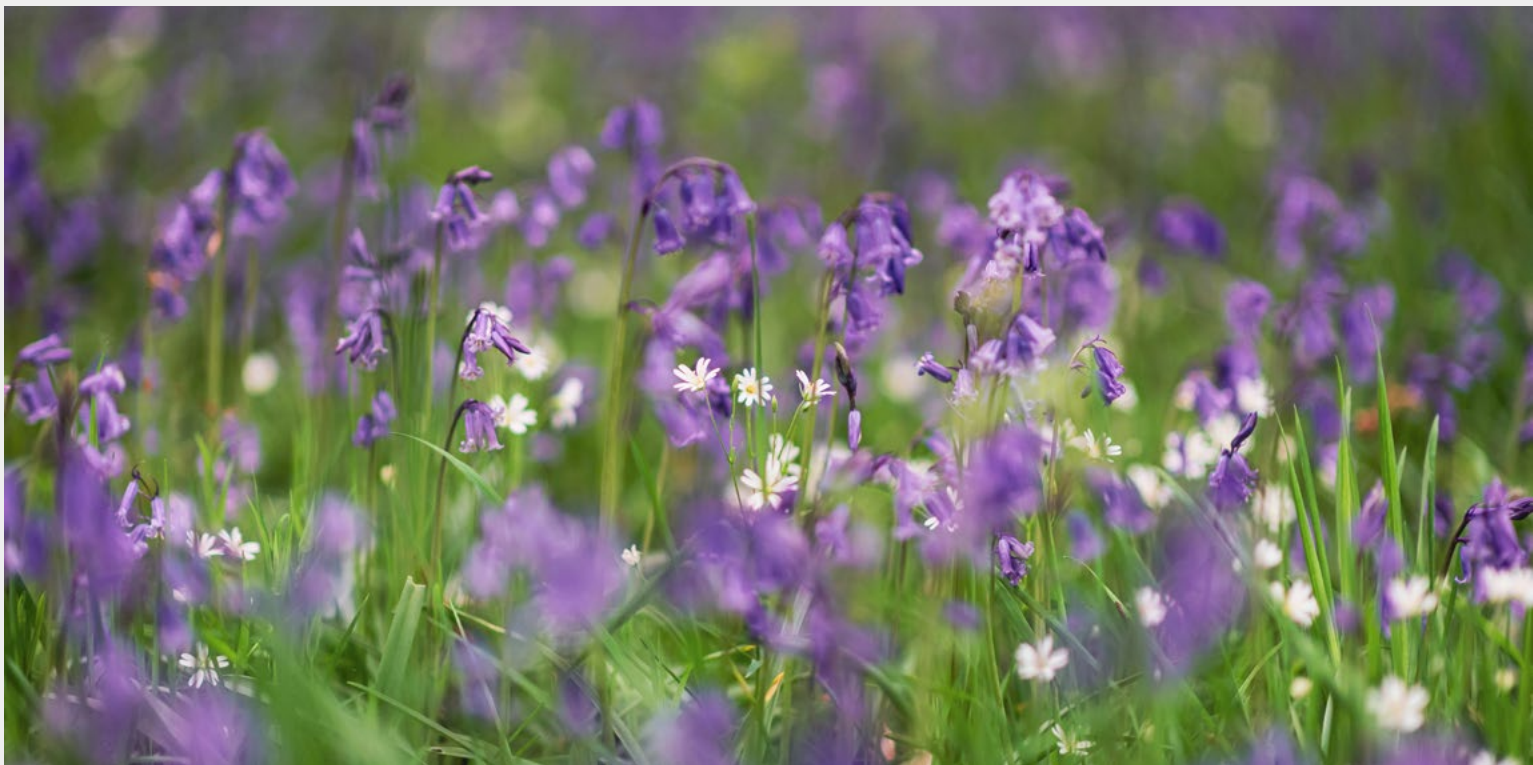
## THE CHEQUERS

Pop over the road for drinks and a bite at this local favourite.



## NORSEY WOOD

Just a short walk to the fresh air and picturesque trails of Norsey Wood nature reserve.



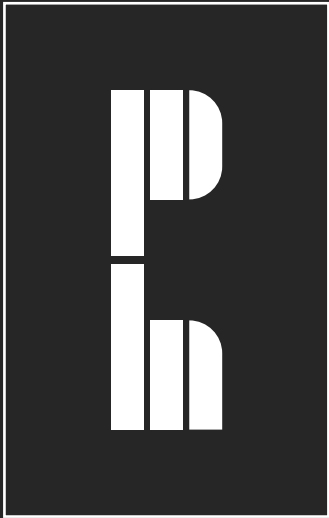
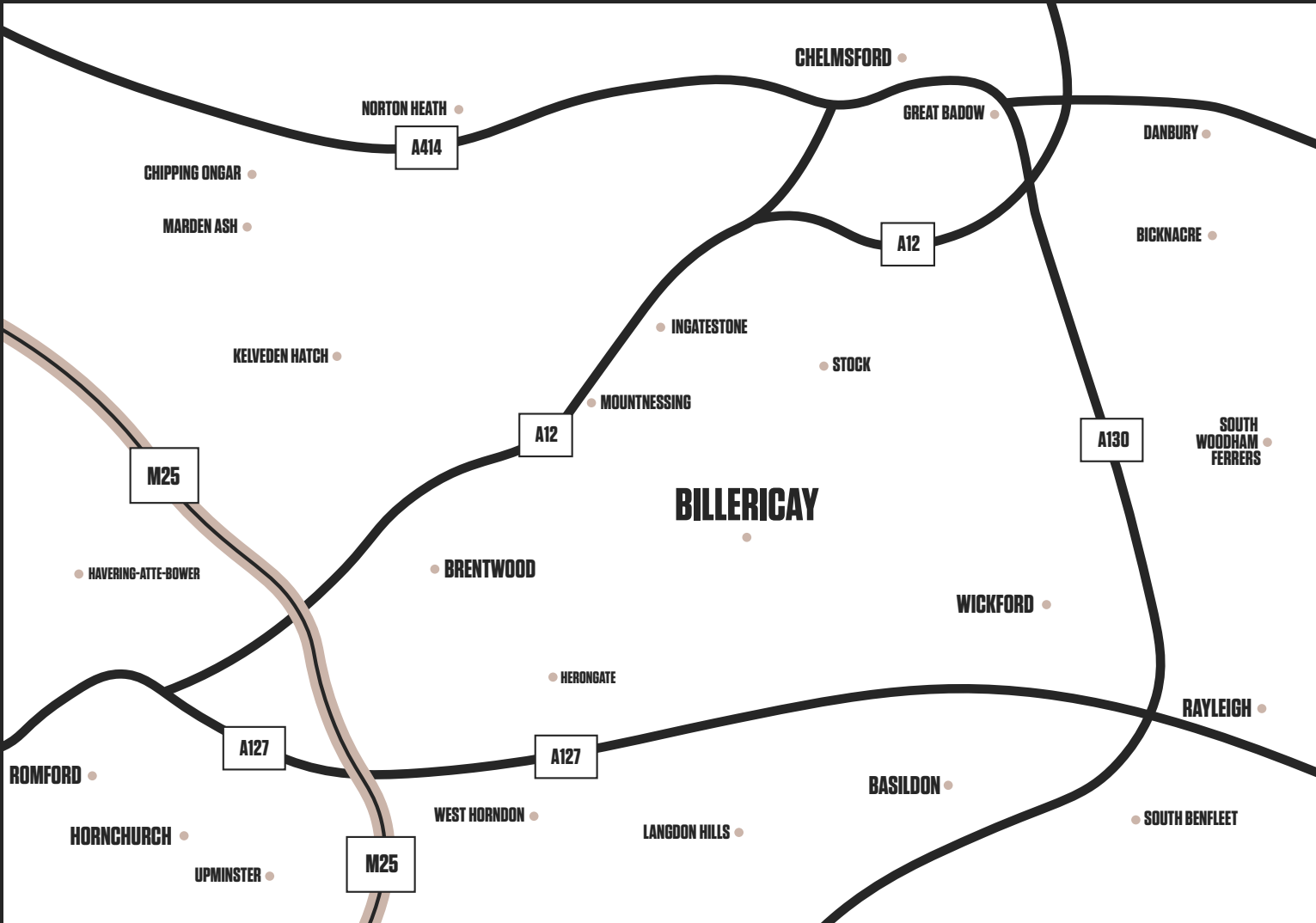
## HIGH STREET

Situated on Billericay's vibrant high street, Squire House offers an incredibly convenient location, right in the heart of the action.





# PERFECTLY PLACED



## Key places

- DINING
- DRINKS
- LEISURE
- SHOPS

TRAIN



DRIVE



WALK



GETTING HOME





# SAVOUR THE STYLE



# CONTEMPORARY COMFORT









# SPECIFICATIONS

## KITCHEN

- ILK matte black kitchen cabinets
- Expressions Carrara Quartz worktops and fully clad splashbacks
- Blanco Supra 400 Undermounted Stainless Steel Sink
- 4 ring induction hob
- Integrated oven
- LED lights under the kitchen wall units
- Integrated dishwasher
- Integrated microwave
- Integrated washer/dryer
- 70/30 integrated fridge/freezer

## BATH / SHOWER ROOMS

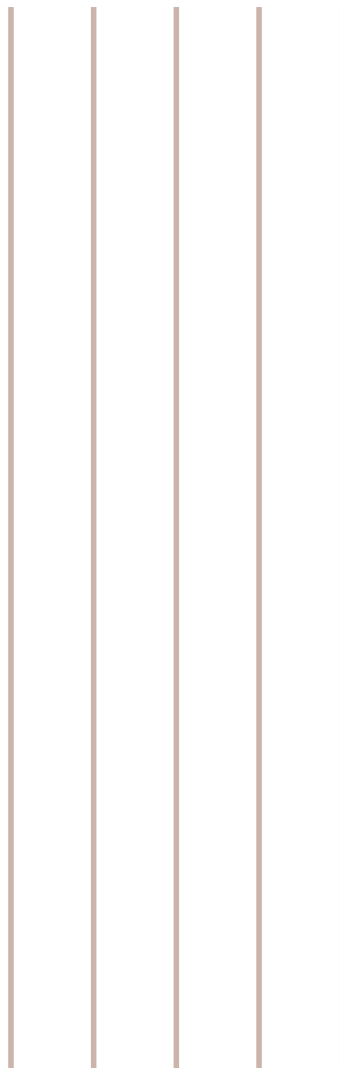
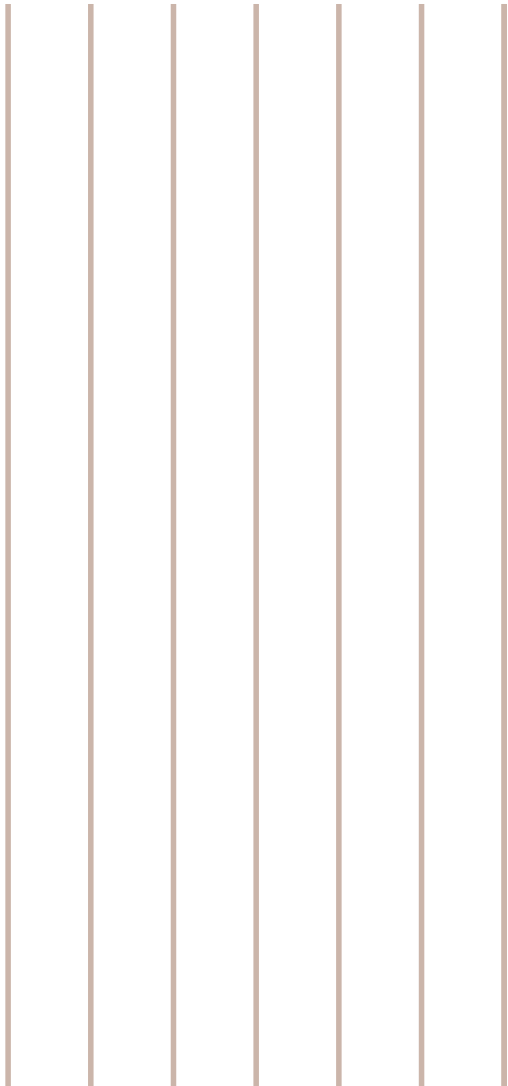
- Lusso Senza Wall Hung Rimless Matte Toilet with brushed gold flush plate
- Lusso Ethos Resin Wall Hung Basin
- Brushed gold Lusso Thermostat IC Shower with handheld shower
- Brushed gold Lusso Monobloc Mixer Tap
- Stone resin low profile shower tray
- Recessed mirror alcoves
- Recessed niches with feature lighting in shower
- Brushed gold heated towel warmer
- Glass shower screen
- Pure Onyx matt grey floor and wall tiles to bathroom

## DOORS, FLOORING, SKIRTS, ARCS, SWITCHES & SOCKETS

- Internal doors -Todd doors in portland stone
- Black Athena Lever on round rose handles
- Doors of Distinction Arnhem front door
- iSteel double sliding door set in units 2, 3, 6, 7, 10, 11, 15, 16, 19, 20, 23, 24
- Grooved grande MDF and architrave in portland stone
- Black smart sockets & switches
- Brampton Chase Herringbone flooring in ivory white to kitchen & living areas
- Pure Onyx matt grey floor and wall tiles to bathroom
- Abingdon Snowfall carpets to bedrooms, excluding units 2, 3, 6, 7, 10, 11, 15, 16, 19, 20, 23, 24 which will have Brampton Chase Herringbone flooring in ivory white

## GENERAL

- ICW 10 Year Warranty
- Pre-wired for Sky
- HIK Vision system with KH8 series indoor station
- Built-in ceiling speakers to kitchen/living areas
- Smart home technology
- Smart smoke alarm
- LED spotlights throughout
- Heatstore Dynamic Intelipanel plus heaters
- Parking to all apartments
- Lift to all floors
- Built-in speakers
- Smart smoke alarm
- Built-in wardrobes to units 2, 3, 6, 7, 10, 11, 15, 16, 19, 20, 23, 24







# GROUND FLOOR

## APARTMENT 1

Bedroom	3.71 m × 3.76 m	12'2" x 12'4"
Kitchen / Living / Dining	5.67 m × 4.79 m	18'7" x 15'9"

## APARTMENT 2

Bedroom	3.28 m × 2.88 m	10'9" x 9'5"
Kitchen / Living / Dining	4.43 m × 4.83 m	14'6" x 15'10"

## APARTMENT 3

Bedroom	3.28 m × 2.88 m	10'9" x 9'5"
Kitchen / Living / Dining	4.43 m × 4.83 m	14'6" x 15'10"

## APARTMENT 4

Bedroom 1	3.86 m × 5.24 m	12'8" x 17'2"
Bedroom 2	2.73 m × 4.13 m	8'11" x 13'7"
Kitchen / Living / Dining	4.55 m × 4.06 m	14'11" x 13'4"
Amneties	6.20 m × 13.90 m	20'41" x 45'72"

## APARTMENT 5

Bedroom	3.04 m × 3.99 m	9'11" x 13'1"
Kitchen / Living / Dining	5.84 m × 5.24 m	19'1" x 17'2"
Amneties	6.20 m × 10.30 m	20'41" x 33'96"

## APARTMENT 6

Bedroom	3.28 m × 2.88 m	10'9" x 9'5"
Kitchen / Living / Dining	4.43 m × 4.83 m	14'6" x 15'10"

## APARTMENT 7

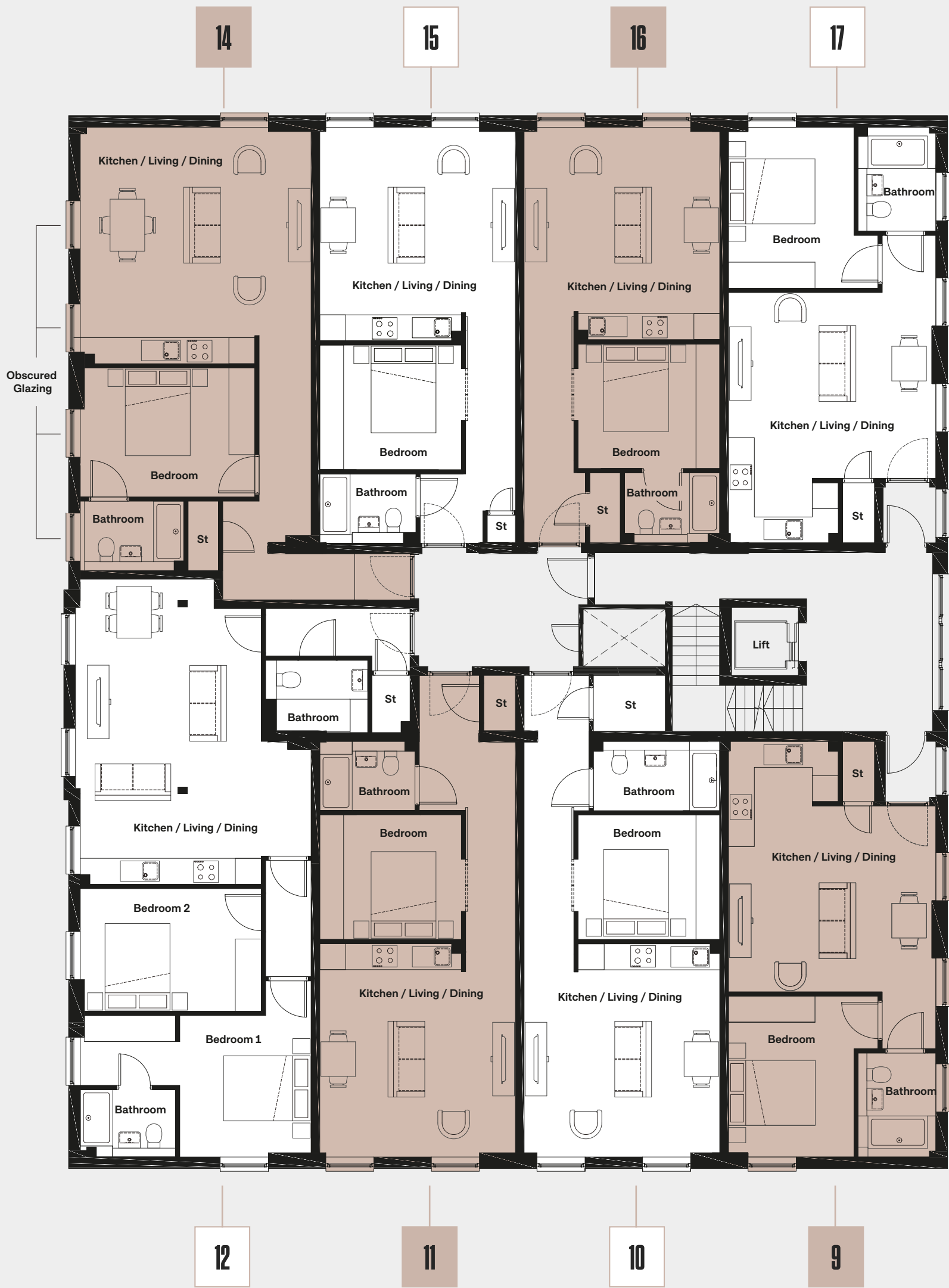
Bedroom	3.28 m × 2.88 m	10'9" x 9'5"
Kitchen / Living / Dining	4.43 m × 4.83 m	14'6" x 15'10"

## APARTMENT 8

Bedroom	3.71 m × 3.76 m	12'2" x 12'4"
Kitchen / Living / Dining	5.67 m × 4.79 m	18'7" x 15'9"

# FLOOR PLANS





# FIRST FLOOR

## APARTMENT 9

Bedroom	3.71m x 3.76m	12'2" x 12'4"
Kitchen / Living / Dining	5.67m x 4.79m	18'7" x 15'9"

## APARTMENT 10

Bedroom	3.28m x 2.88m	10'9" x 9'5"
Kitchen / Living / Dining	4.43m x 4.83m	14'6" x 15'10"

## APARTMENT 11

Bedroom	3.28m x 2.88m	10'9" x 9'5"
Kitchen / Living / Dining	4.43m x 4.83m	14'6" x 15'10"

## APARTMENT 12

Bedroom 1	5.33 m x 4.77m	17'6" x 15'8"
Bedroom 2	4.19m x 2.88m	13'9" x 9'5"
Kitchen / Living / Dining	4.55m x 4.06m	14'11" x 13'4"

## APARTMENT 14

Bedroom	3.08m x 3.94m	10'1" x 12'11"
Kitchen / Living / Dining	5.36m x 5.23m	17'7" x 17'1"

## APARTMENT 15

Bedroom	3.28m x 2.88m	10'9" x 9'5"
Kitchen / Living / Dining	4.43m x 4.83m	14'6" x 15'10"

## APARTMENT 16

Bedroom	3.28 x 2.88m	10'9" x 9'5"
Kitchen / Living / Dining	4.43m x 4.83m	14'6" x 15'10"

## APARTMENT 17

Bedroom	3.71m x 3.76m	12'2" x 12'4"
Kitchen / Living / Dining	5.67m x 4.79m	18'7" x 15'9"





# SECOND FLOOR

## APARTMENT 18

Bedroom	3.72m × 2.73m	12'2" × 8'11"
Kitchen / Living / Dining	4.43m × 3.86m	14'6" × 12'8"

## APARTMENT 19

Bedroom	3.27m × 2.89m	10'9" × 9'6"
Kitchen / Living / Dining	4.45m × 4.32m	14'7" × 14'2"

## APARTMENT 20

Bedroom	3.28m × 2.89m	10'9" × 9'6"
Kitchen / Living / Dining	4.42m × 4.46m	14'6" × 14'8"

## APARTMENT 21

Bedroom 1	3.13m × 3.28m	10'3" × 10'9"
Bedroom 2	3.73m × 2.60m	12'3" × 8'6"
Kitchen / Living / Dining	4.55m × 6.86m	14'11" × 22'6"

## APARTMENT 22

Bedroom	3.57m × 2.88m	11'9" × 9'5"
Kitchen / Living / Dining	4.67m × 5.20m	15'4" × 17'1"

## APARTMENT 23

Bedroom	3.37m × 2.88m	11'1" × 9'5"
Kitchen / Living / Dining	4.42m × 3.71m	14'6" × 12'2"

## APARTMENT 24

Bedroom	3.37m × 2.88m	11'1" × 9'5"
Kitchen / Living / Dining	4.46m × 4.43m	14'8" × 14'6"

## APARTMENT 25

Bedroom	3.62m × 3.28m	11'10" × 10'9"
Kitchen / Living / Dining	5.41m × 4.43m	17'9" × 14'6"





For sales enquiries

01992 940955

lanesexclusivehomes.co.uk

A development by



KLARA HOMES

IMPORTANT NOTICE:  
Whilst every care has been taken to ensure accuracy these particulars do not constitute part of any offer or contract and the right to change plans, specifications and materials is reserved. All measurements are given as a guide only. Purchasers are advised to check plot specific dimensions and specifications prior to reservation. No liability can be accepted for any errors arising there from. Development images are indicative and may vary. Specifications for this development may not include fixtures, fittings and furnishings shown in the photographs and illustrations. Features and finishes are shown for illustrative purposes only and are not intended to form part of any contract or warranty. No responsibility is taken for any other error, omission, or mis-statements in these particulars. Neither the vendor nor its agents make or give, whether in these particulars, during the negotiations or otherwise, any representation or warranty in relation to this property.

Designed by Fresh Lemon



Image of flat 4 private amenity.

Computer generated imagery is indicative only.