



THE VIEW
COLLECTION

AT SQUIRE HOUSE

BILLERICAY



A collection of contemporary one & two bedroom apartments on Billericay's vibrant high street

This exclusive collection of three rooftop apartments offers a unique living experience. Enjoy stunning views across the valley and beyond, all from the comfort of your private terrace.

Comprising two 1-bedroom apartments and one 2-bedroom apartment, each residence has been meticulously designed with high-quality finishes throughout. These apartments are perfect for those seeking both convenience and tranquillity, offering the perfect blend of modern living and breathtaking natural beauty.



Computer generated imagery is indicative only.

With its buzzing high street location and easy access to surrounding green spaces and the train station, Squire House offers the best of Billericay living.

Just feet from your front door you'll find an impressive choice of restaurants and cafés, and one of the area's most-loved local pubs, as well as a great selection of shops.

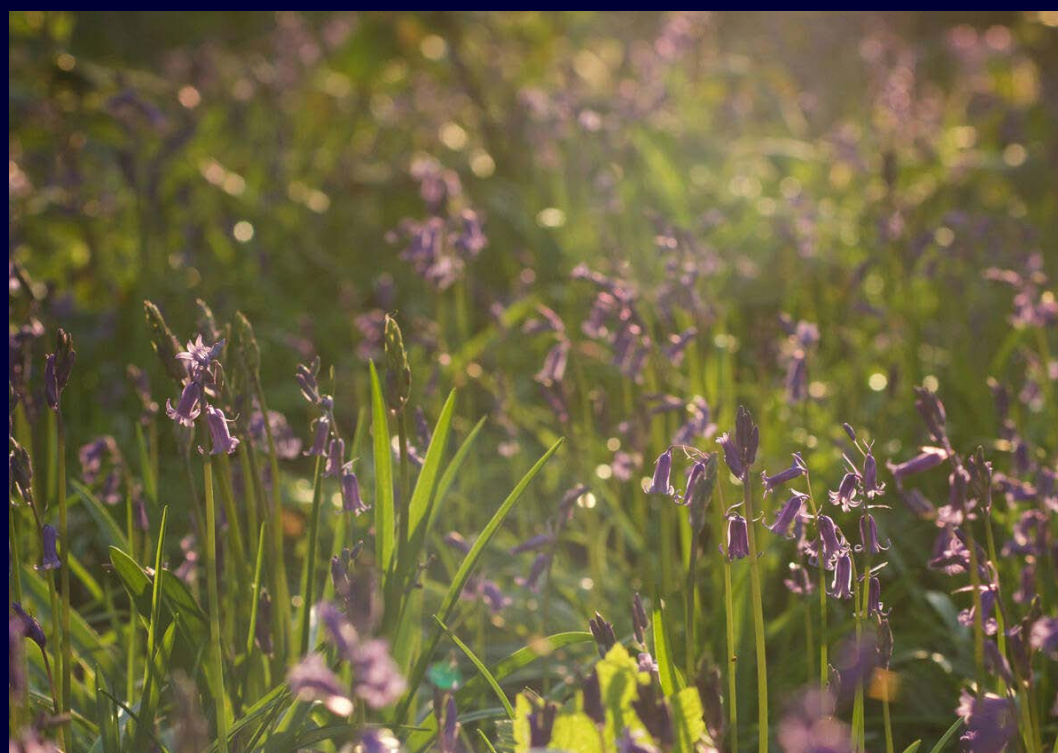


The Chequers
Pop over the road for drinks and a bite at this local favourite.

High Street
Situated on Billericay's vibrant high street, Squire House offers an incredibly convenient location, right in the heart of the action.



BILLERICAY



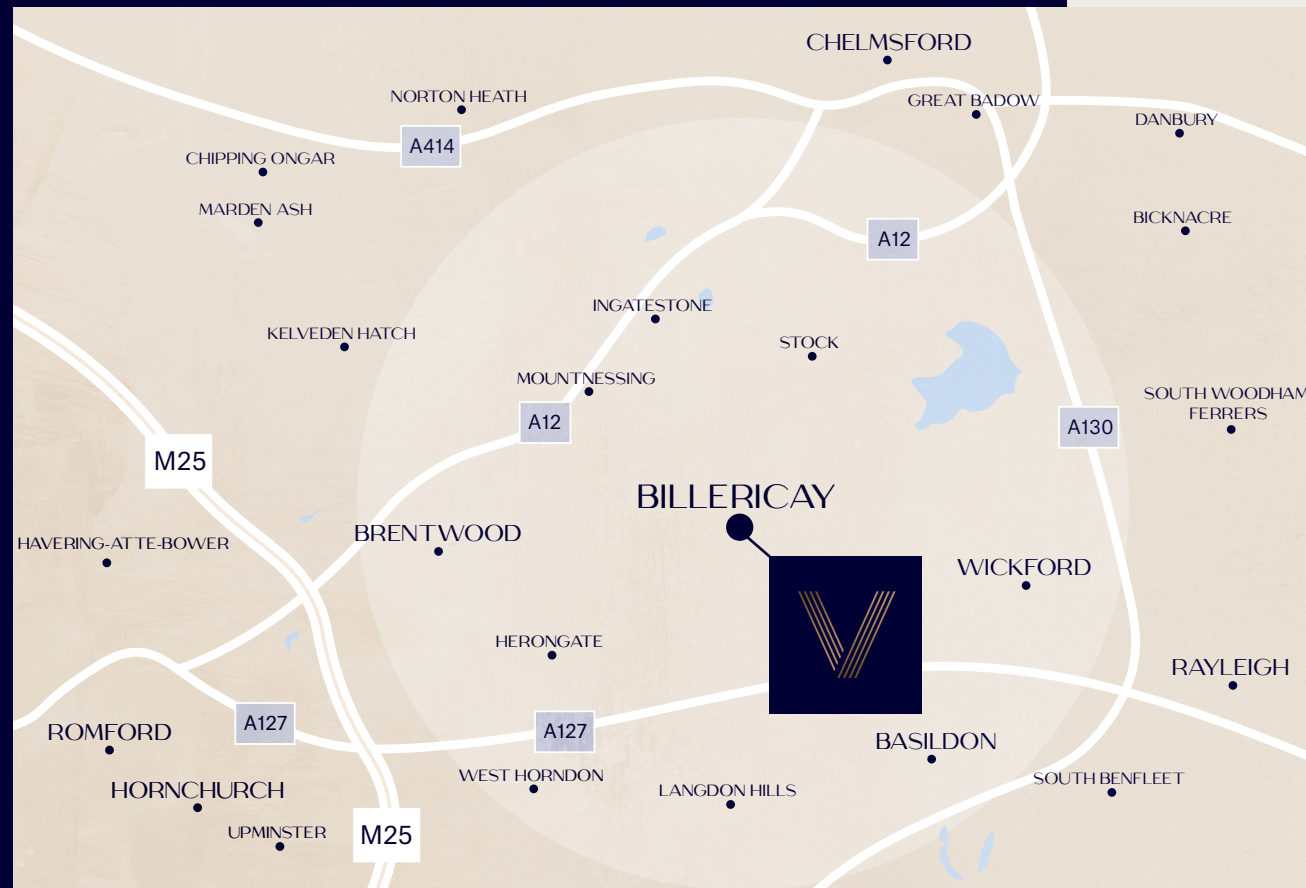
Norsey Wood
Just a short walk to the fresh air and picturesque trails of Norsey Wood nature reserve.



When it comes to eating and drinking out, it's all on your doorstep, from casual all-day hang-outs to fine-dining restaurants. Catch up with friends over coffee at Gail's, and tuck into authentic Thai cuisine at the Giggling Squid. Or take your evening up a level with sophisticated seafood at Felix and cocktails and Italian cuisine at Cristi's.

For more fun and games, head to nearby Hackers for mini-golf with a difference, and Players Lounge for comedy, club nights and live music.

All this, and you can be at Billericay's well-connected train station within a short walk, and swiftly towards central London in just 34 minutes.



TRAIN



- CHELMSFORD
21 minutes
- SOUTHEND AIRPORT
22 minutes
- STRATFORD
(FOR WESTFIELD)
24 minutes
- LONDON
LIVERPOOL ST
34 minutes
- CANARY WHARF
37 minutes

DRIVE



- BRENTWOOD
13 minutes
- M25 (J28)
15 minutes
- CHELMSFORD
17 minutes
- BLUEWATER
SHOPPING CENTRE
32 minutes
- STANSTED AIRPORT
41 minutes

WALK



- GAIL'S
1 minute
- WAITROSE
3 minutes
- MILL MEADOWS
6 minutes
- BILLERICAY
STATION
7 minutes
- NORSEY WOOD
13 minutes





Computer generated imagery is indicative only.

SPECIFICATIONS

Kitchen

- ILK matte black kitchen cabinets
- Horizon Calacatta Dorato Quartz worktops and fully clad splashbacks
- Blanco Supra 400 Undermounted
- Stainless Steel Sink
- 4 ring induction hob
- Integrated oven
- LED lights under the kitchen wall units
- Integrated dishwasher
- Integrated microwave
- Integrated washer/dryer
- 70/30 integrated fridge/freezer

Bath / Shower rooms

- Lusso Senza Wall Hung Rimless Matte Toilet with brushed gold flush plate
- Lusso Ethos Resin Wall Hung Basin
- Brushed gold Lusso Thermostat IC Shower with handheld shower
- Brushed gold Lusso Monobloc Mixer Tap
- Recessed mirror alcoves
- Recessed niches with feature lighting in shower
- Brushed gold heated towel warmer
- Glass shower screen
- Pure Onyx matt grey floor and wall tiles to bathroom

Doors, flooring, skirts, arcs, switches & sockets

- Internal doors -Todd doors in portland stone
- Black Athena Lever on round rose handles
- Grooved grande MDF and architrave in portland stone
- Black sockets & switches
- Brampton Chase Herringbone flooring in ivory white to kitchen & living areas
- Abingdon Snowfall carpets to bedrooms

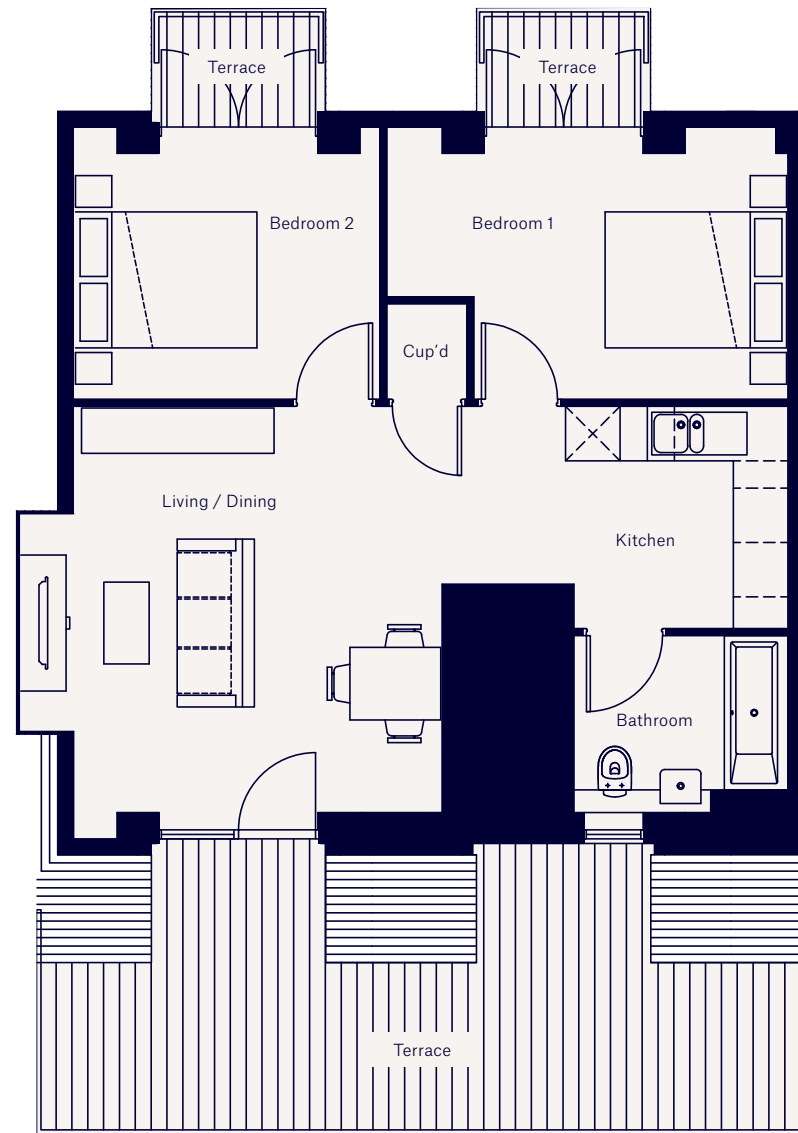
General

- ICW 10 Year Warranty
- Pre-wired for Sky
- HIK Vision system with KH8 series indoor station
- Built-in ceiling speakers to kitchen/living areas
- Smoke alarm
- LED spotlights throughout
- Heatstore Dynamic Intelipanel plus heaters



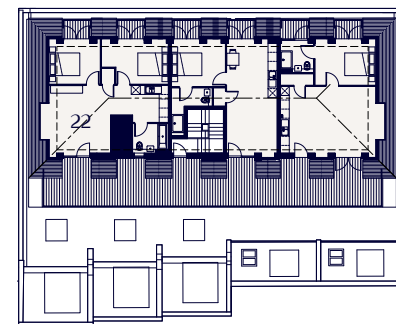
Computer generated imagery is indicative only.

FLOOR PLANS APARTMENT 22

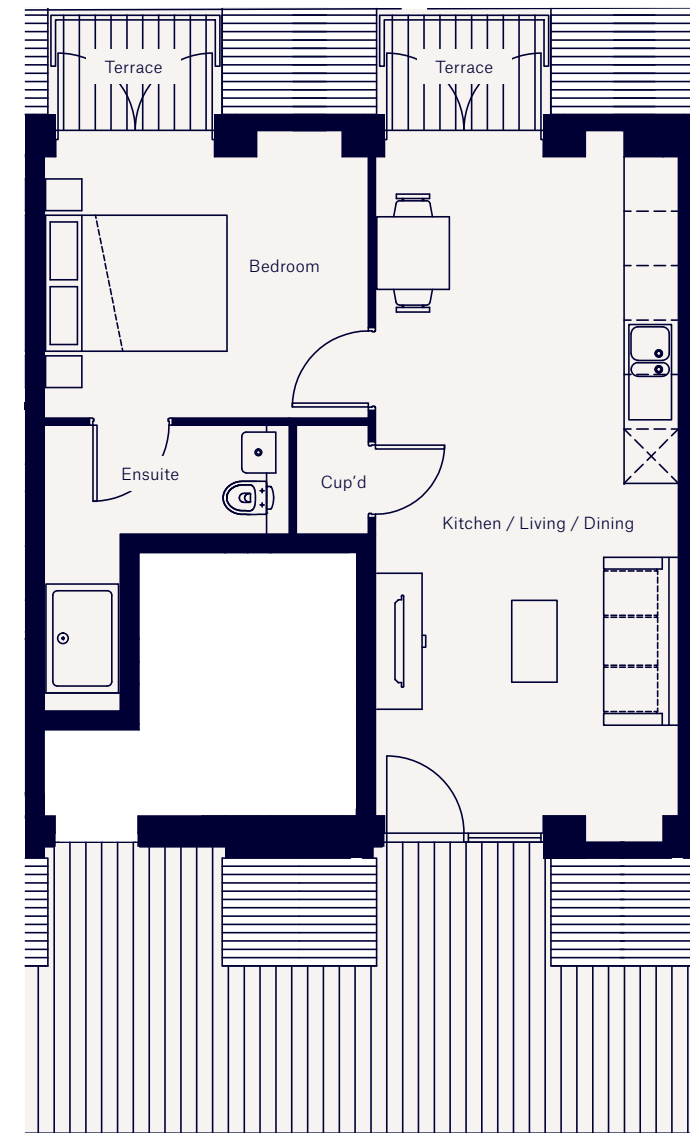


2 BEDROOM APARTMENT

APARTMENT 22		
Living / Dining	5.33m x 4.76m	17'6" x 15'7"
Kitchen	2.48m x 3.51m	8'2" x 11'6"
Bedroom 1	4.46m x 3.04m	14'8" x 10'0"
Bedroom 2	3.42m x 3.04m	11'3" x 10'0"

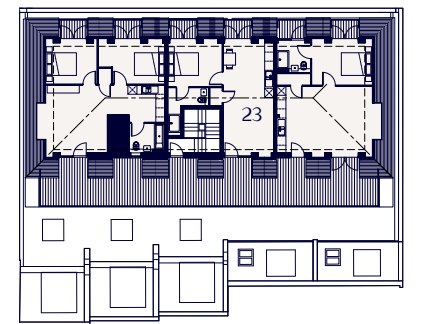


FLOOR PLANS APARTMENT 23

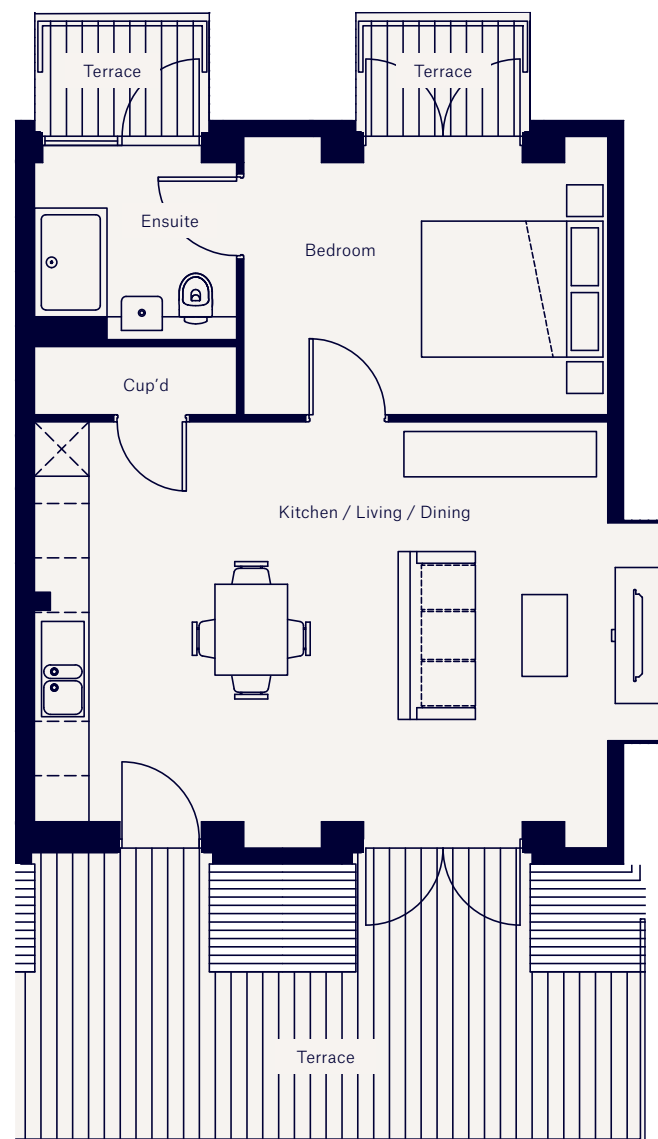


1 BEDROOM APARTMENT

APARTMENT 23		
Kitchen / Living / Dining	7.80m x 3.39m	23'3" x 11'2"
Bedroom	3.62m x 3.04m	11'11" x 10'0"

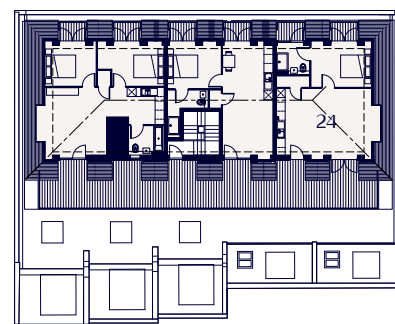


V FLOOR PLANS APARTMENT 24



1 BEDROOM APARTMENT

APARTMENT 24		
Kitchen / Living / Dining	6.93m x 4.76m	22'9" x 15'7"
Bedroom	4.05m x 3.04m	13'4" x 10'0"



A development by



KLARA HOMES

Klara Homes is a privately owned property development company based in Hertfordshire. With a diverse portfolio of beautifully designed homes and apartments, our premium sites present aspirational spaces for people to call 'home'. From the beginning, our ethos has been to create properties of excellence with the latest resources and interior trends, as we work to effortlessly blend functionality and style.



For sales enquiries

01992 940955

lanesexclusivehomes.co.uk

IMPORTANT NOTICE:

Whilst every care has been taken to ensure accuracy these particulars do not constitute part of any offer or contract and the right to change plans, specifications and materials is reserved. All measurements are given as a guide only. Purchasers are advised to check plot specific dimensions and specifications prior to reservation. No liability can be accepted for any errors arising there from. Development images are indicative and may vary.

Specifications for this development may not include fixtures, fittings and furnishings shown in the photographs and illustrations. Features and finishes are shown for illustrative purposes only and are not intended to form part of any contract or warranty. No responsibility is taken for any other error, omission, or mis-statements in these particulars. Neither the vendor nor its agents make or give, whether in these particulars, during the negotiations or otherwise, any representation or warranty in relation to this property.

Designed by Fresh Lemon