

The background of the entire page is a repeating pattern of oak leaves. The leaves are rendered in a light, golden-brown color with a fine, intricate line-art style that shows the veins of each leaf. They are scattered across the page in various orientations and sizes, creating a dense, textured effect. The overall color palette is warm and autumnal, ranging from light beige to a soft, muted brown.

Oakview Gardens

Bricket Wood, AL2



Welcome to Oakview Gardens, an exceptional and private development consisting of just six 3 & 4 bedroom homes designed by reputable housebuilder, Mosaic Group located in the picturesque and charming village of Bricket Wood. Oakview Gardens offers a tranquil haven surrounded by mature oak trees and combines the idyll of country life with fantastic connections to the city making this perfect place to call home.

Each home has been thoughtfully designed to maximise space and light throughout with high specification finishes such as contemporary kitchens with a number of integrated appliances and Quartz worktops. All homes benefit from a B-rated EPC and have a number of cost-saving technologies included to increase efficiency and sustainability such as Mitsubishi air source heat pump heating, underfloor heating and increased insulation to assist in lowering costs, reduce heat loss and improve living quality all year round.

What's more, all homes benefit from 2 parking spaces with EV charging point plus the use of visitor parking, good-sized landscaped gardens and a 10-year new build structural guarantee for that complete peace of mind.

Fantastically connected to the capital, Bricket Wood Train Station located approx. 0.5 miles away offers quick and easy transport links into London, making Oakview Gardens ideal for commuting professionals and families who enjoy exploring the city. In addition, you will benefit from excellent road connections nearby linking you to the M25 and M1 along with a number of highly-regarded state, grammar and private schools in the immediate locality.

SHOW HOME
AVAILABLE TO VIEW
MOVE IN FOR SUMMER!



SPECIFICATION

APPLIANCES:

- Fully integrated 70 / 30 split fridge/freezer (Candy)
- Integrated washer/dryer (or separate washing machine/tumble dryer) (Hoover)
- Built-in Oven (Bosch)
- Canopy Hood (Nueue)
- Built-in Microwave Oven (Bosch)
- Induction Cooker 4-ring hob (Bosch)
- Integrated full-size dishwasher (Bosch)

KITCHEN :

- Quartz Carrara style - white with grey vein
- 1.5 stainless steel sink
- Sink tap chrome
- Multi-gang switches for appliances
- Shaker Kitchens - Dove Grey

INTERNAL FINISHES:

- Walls: Dulux Pure White/Neutral
- Ceilings: Dulux Pure Brilliant White
- Skirting / Architrave / Doors: White
- Staircase: Brilliant White with handrail and newel cap finished in timber
- Contemporary Matt Black Ironmongery
- Contemporary luxury carpets in all bedrooms
- Quick-Step Laminate flooring

HEATING:

- Warm Water underfloor heating to the complete ground floor
- Radiators to first-floor ground floor
- All heating by Modern Air Source Heat Pump

BATHROOM/EN-SUITES

- Half-height tiling to walls with toilets are fitted single tiled splash back to vanity basins
- Full-height tiling around bath and shower enclosures
- Single tile splash-backs to cloakroom basins
- Roca Thermostatically controlled exposed shower valve with fixed head in Ensuite
- Roca Wall hung Rimless Toilets
- Roca Wall hung 2 drawer basin vanity units
- Electric Heated towel rails to bathroom and en-suites
- Shaver socket
- White contemporary sanitaryware fitted with chrome brassware
- Tiled Porcelain flooring

EXTERNAL DETAILS:

- UPVC windows
- Composite front door
- Front paths and rear garden paved
- Landscaping to front gardens
- EV charging point to each home

ELECTRICAL:

- White sockets and switches
- Low-energy downlighters in Kitchen and Bathrooms
- Ceiling-mounted CO and heat detectors
- USB plug sockets to bedroom, study space and kitchen

GENERAL:

- 10 Year New Build Warranty provided to all plots

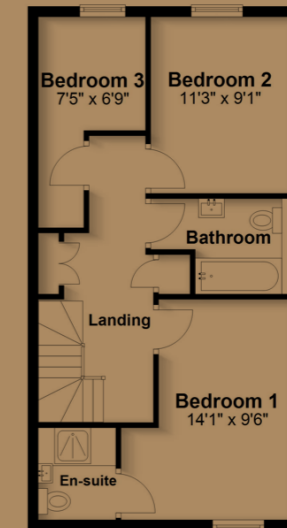
Ground Floor

Approx. 518.3 sq. feet



First Floor

Approx. 518.3 sq. feet



Total area: approx. 1036.7 sq. feet

3 BEDROOM HOME DIMENSIONS

Lounge/Dining	17.9ft x 16.2ft	5.4m x 4.9m
Kitchen	14.1ft x 8.2ft	4.3m x 2.5m
Bedroom 1	14.1ft x 10.1ft	4.3m x 3.3m
Bedroom 2	11.3ft x 9ft	3.4m x 2.8m
Bedroom 3	13.4ft x 6.9ft	4.1m x 2.1m

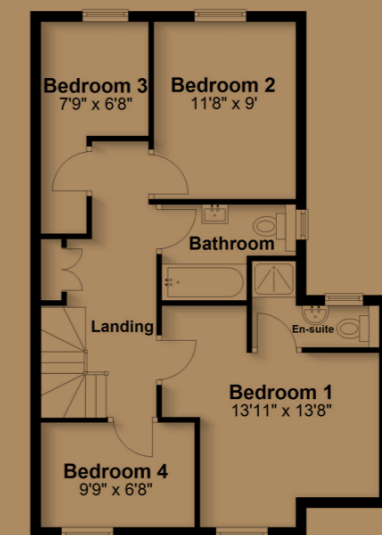
Ground Floor

Approx. 583.2 sq. feet



First Floor

Approx. 583.8 sq. feet



Total area: approx. 1167.0 sq. feet

4 BEDROOM HOME DIMENSIONS

Kitchen/Dining	17.8ft x 16.2ft	5.4m x 4.9m
Living Room	14.1ft x 13.5ft	4.3m x 4.1m
Bedroom 1	13.1ft x 13.8ft	4.2m x 4.2m
Bedroom 2	11.8ft x 9ft	3.6m x 2.7m
Bedroom 3	7.9ft x 6.8ft	2.4m x 2m
Bedroom 4	9.9ft x 6.8ft	3m x 2m

Oakview Gardens

Bricket Wood, AL2



01992 940955

herts@lanesexclusivehomes.co.uk

Whilst every care has been taken to ensure accuracy these particulars do not constitute part of any offer or contract and the right to change plans, specifications and materials is reserved. All measurements are given as a guide only. No liability can be accepted for any errors arising there from. No responsibility is taken for any other error, omission, or mis-statements in these particulars. Neither the vendor nor its agents make or give, whether in these particulars, during the negotiations or otherwise, any representation or warranty in relation to this property. Specifications for this development may not include fixtures, fittings and furnishings shown in the photographs and illustrations